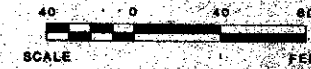
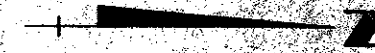


**PLAT NO. 18
QUAIL RIDGE**

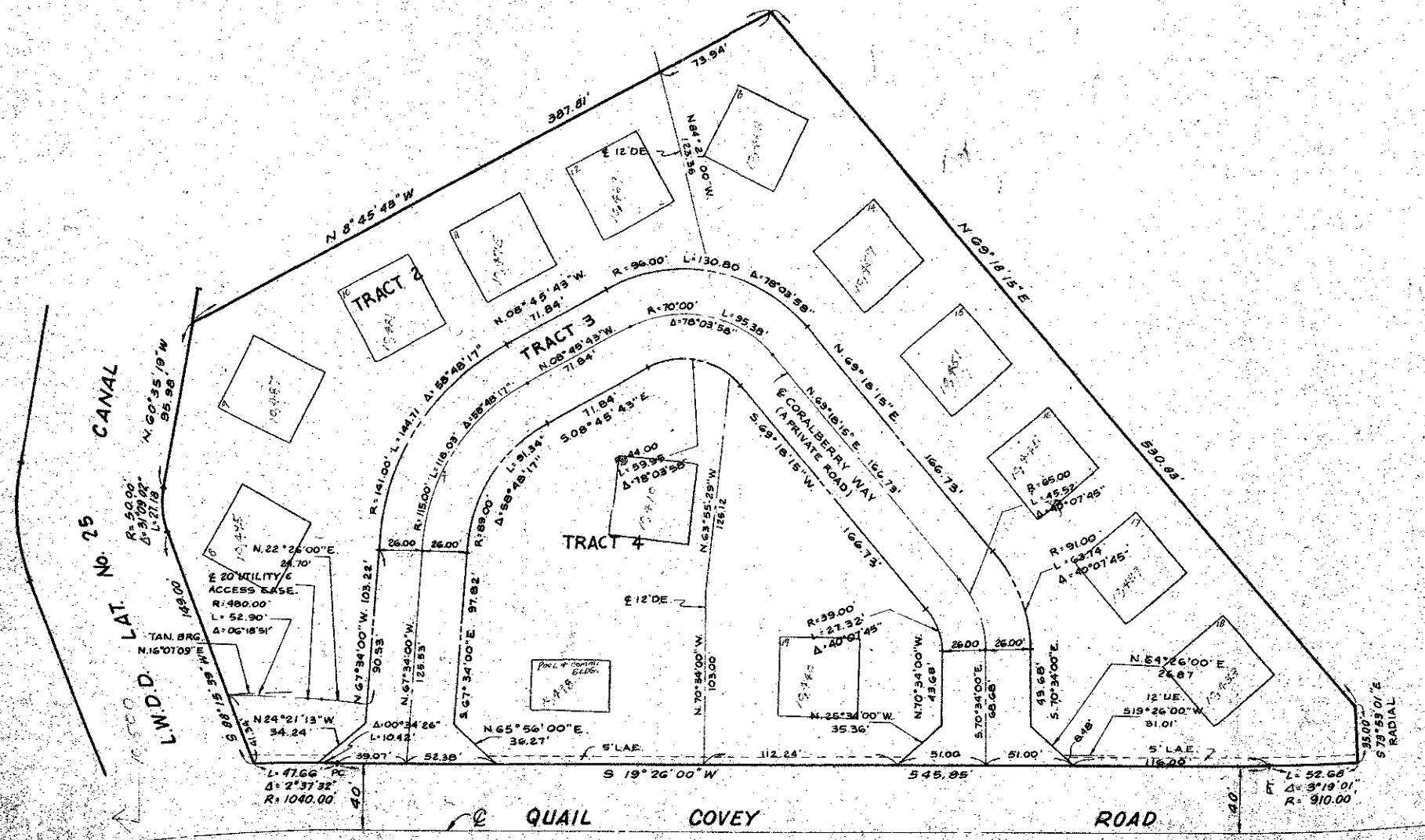
(A PLANNED UNIT DEVELOPMENT)

IN SECTION 30 TOWNSHIP 45 SOUTH, RANGE 43 EAST
PALM BEACH COUNTY, FLORIDA, BEING A REPLAT OF
PORTIONS OF TRACTS 51,52,53,76,77,78,84 AND 85
PALM BEACH FARMS COMPANY PLAT NO. 8 SEC. 30
T-45-S, R-43-E PLAT BOOK 5 PAGE 73 AND OTHER LANDS
IN 4 SHEETS SHEET NO. 4

133



1:40



Quail Ridge
BUILDING LOCATIONS
ARE APPROXIMATE

1000-053

38/133