

38-48

PLAT NO. 17 QUAIL RIDGE

(A PLANNED UNIT DEVELOPMENT)

IN SECTION 30 TOWNSHIP 45 SOUTH, RANGE 43 EAST
PALM BEACH COUNTY, FLORIDA, BEING A REPLAT OF
PORTIONS OF TRACTS 85,86,87,106,107,108,117 AND 118
PALM BEACH FARMS COMPANY PLAT NO. 8 SEC. 30
T-45-S, R-43-E PLAT BOOK 5 PAGE 73 AND OTHER LANDS

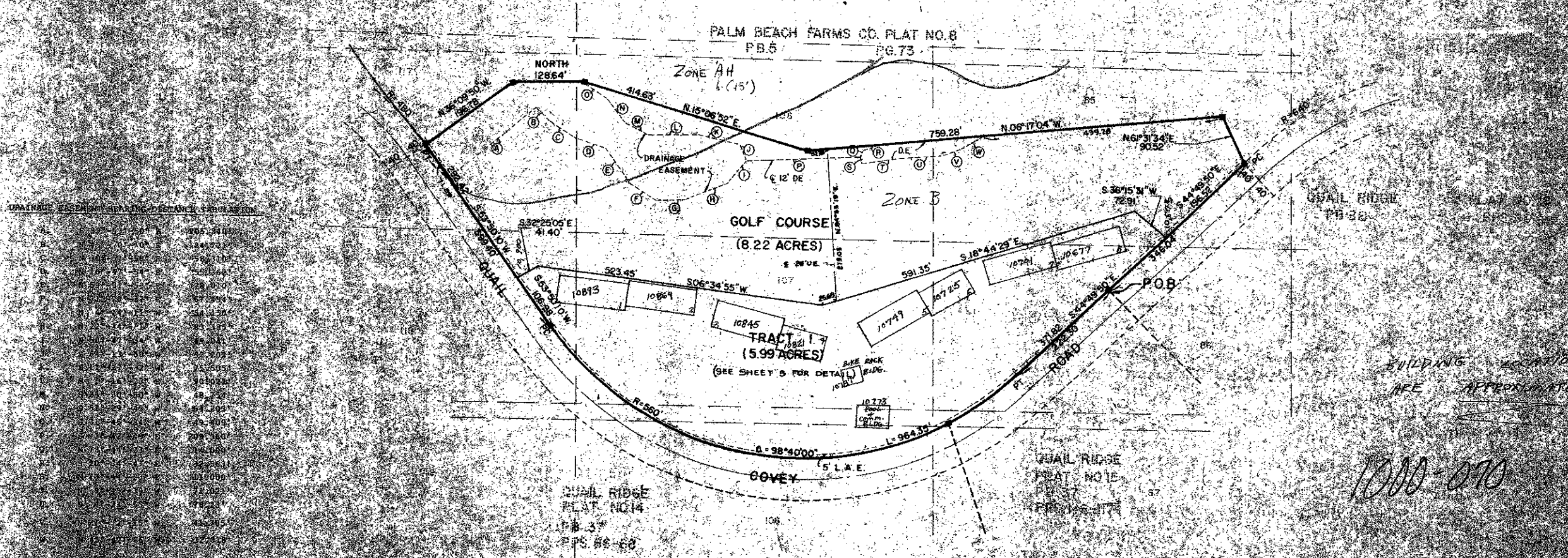
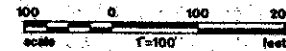
IN 3 SHEETS SHEET NO. 2

MOCK ROOS & SEARCY, INC.

CONSULTING ENGINEERS
WEST PALM BEACH, FLORIDA

JUNE 1979

48



BUILDING OCCUPATION
AGE APPROXIMATE

1000-070

38/48

Quail Ridge #1