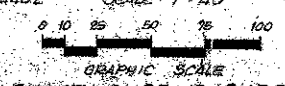


38-42

P.U.D. TIBURON II - PHASE II

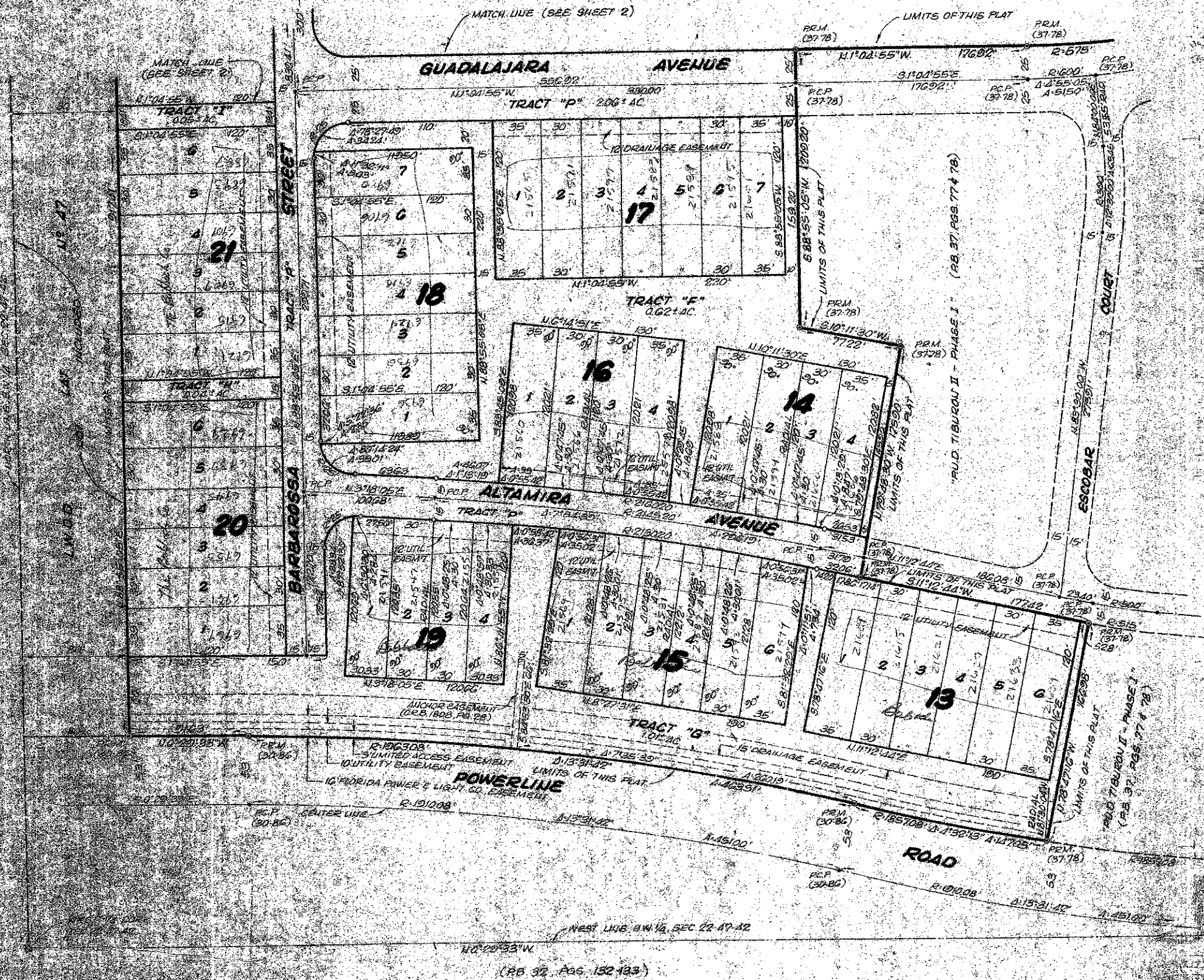
BEING A REPLAT OF A PORTION OF TRACT 31-A "BOCA DEL MAR, N.E. 1", PLAT BOOK 30, PAGE 80 PUBLIC RECORDS OF PALM BEACH COUNTY, FLORIDA, LYING AND BEING IN THE SOUTHWEST 1/4 OF SECTION 22, TOWNSHIP 47 SOUTH, RANGE 42 EAST PALM BEACH COUNTY FLORIDA

PREPARED BY
SCHWEBKE-SHISKIN & ASSOC., INC.
LAND SURVEYORS - ENGINEERS - ARCHITECTS - LAND PLANNERS
MIAMI FLORIDA
ORDER NO. 154402 SCALE 1" = 40' MAY, 1970



SHEET 3 OF 3 SHEETS

42



0205-341

Tiburón II Phase II