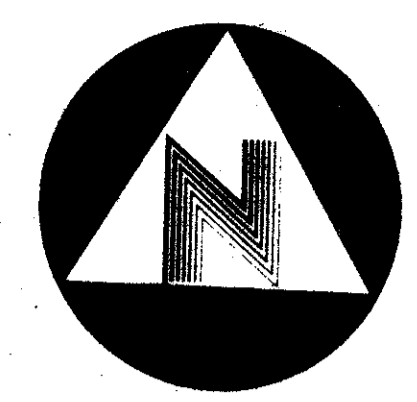
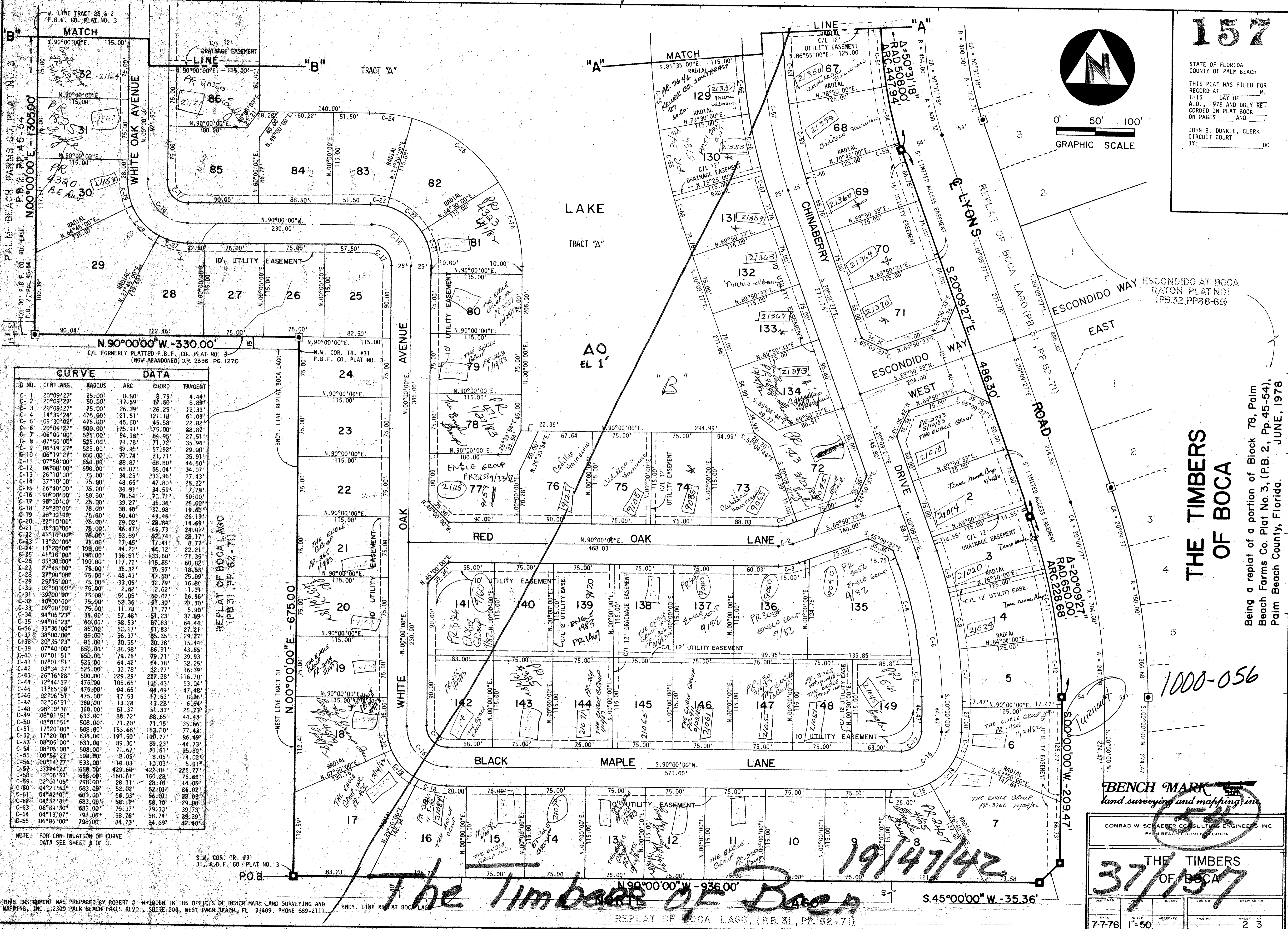


STATE OF FLORIDA
COUNTY OF PALM BEACH
THIS PLAT WAS FILED FOR
RECORD AT _____ M.
THIS _____ DAY OF
A. D. 1978 AND DULY RE-
CORDED IN PLAT BOOK
ON PAGES _____ AND _____
JOHN B. DUNKLE, CLERK
CIRCUIT COURT
BY: _____ DC



0' 50' 100'
GRAPHIC SCALE



C. NO.	CENT. ANG.	RADIUS	ARC	CHORD	TANGENT
C-1	20°09'27"	25.00'	8.80'	4.44'	8.80'
C-2	20°09'27"	50.00'	17.59'	8.80'	17.59'
C-3	20°09'27"	75.00'	26.39'	13.33'	26.39'
C-4	14°39'24"	475.00'	121.51'	121.18'	61.09'
C-5	05°30'02"	475.00'	45.60'	46.58'	22.82'
C-6	20°09'27"	500.00'	175.91'	175.00'	88.87'
C-7	06°01'00"	525.00'	94.98'	54.95'	27.51'
C-8	07°50'00"	525.00'	71.78'	71.72'	35.94'
C-9	06°19'27"	525.00'	57.35'	57.49'	29.00'
C-10	06°19'27"	650.00'	71.74'	71.71'	35.91'
C-11	07°50'00"	650.00'	88.87'	88.80'	44.50'
C-12	06°09'00"	650.00'	68.07'	68.04'	34.07'
C-13	26°10'00"	75.00'	34.25'	33.96'	17.43'
C-14	37°10'00"	75.00'	48.65'	47.80'	25.22'
C-15	26°40'00"	75.00'	34.91'	34.59'	17.78'
C-16	90°00'00"	50.00'	78.54'	70.71'	50.00'
C-17	90°00'00"	25.00'	39.27'	35.36'	25.00'
C-18	29°20'00"	75.00'	38.40'	37.98'	19.63'
C-19	38°30'00"	75.00'	50.40'	49.45'	26.19'
C-20	22°10'00"	75.00'	29.02'	28.84'	14.69'
C-21	35°30'00"	75.00'	46.47'	45.73'	24.01'
C-22	41°10'00"	75.00'	53.89'	52.74'	28.17'
C-23	13°20'00"	75.00'	17.45'	17.41'	8.77'
C-24	13°20'00"	198.00'	44.22'	44.12'	22.21'
C-25	41°10'00"	198.00'	136.53'	133.60'	71.35'
C-26	35°30'00"	198.00'	117.72'	115.85'	60.82'
C-27	27°45'00"	75.00'	36.32'	35.97'	18.83'
C-28	37°00'00"	75.00'	48.43'	47.60'	25.09'
C-29	29°15'00"	75.00'	33.05'	32.79'	16.80'
C-30	02°00'00"	75.00'	2.62'	2.62'	1.31'
C-31	39°00'00"	75.00'	51.05'	50.07'	26.56'
C-32	40°00'00"	75.00'	52.36'	51.30'	27.30'
C-33	09°00'00"	75.00'	11.78'	11.77'	5.90'
C-34	94°05'23"	35.00'	57.48'	57.23'	37.59'
C-35	94°05'23"	60.00'	98.53'	87.83'	64.44'
C-36	35°30'00"	85.00'	52.67'	51.83'	27.21'
C-37	38°00'00"	85.00'	56.37'	55.35'	29.27'
C-38	20°35'23"	85.00'	30.55'	30.38'	15.44'
C-39	07°40'00"	650.00'	86.98'	86.91'	43.55'
C-40	07°01'51"	650.00'	79.76'	79.71'	39.93'
C-41	07°01'51"	525.00'	64.42'	64.38'	32.25'
C-42	03°34'37"	525.00'	32.78'	32.77'	16.39'
C-43	26°16'28"	500.00'	229.29'	227.28'	116.70'
C-44	12°44'37"	475.00'	108.65'	105.43'	53.04'
C-45	11°25'00"	475.00'	94.65'	94.49'	47.48'
C-46	02°06'51"	475.00'	17.53'	17.53'	8.76'
C-47	02°06'51"	360.00'	13.28'	13.28'	6.64'
C-48	08°10'36"	360.00'	51.37'	51.33'	25.73'
C-49	08°01'51"	633.00'	88.72'	88.65'	44.43'
C-50	08°01'51"	508.00'	71.20'	71.15'	35.66'
C-51	17°20'00"	508.00'	153.68'	153.10'	77.43'
C-52	17°20'00"	633.00'	191.50'	190.77'	96.49'
C-53	08°05'00"	633.00'	89.30'	89.23'	44.73'
C-54	08°05'00"	508.00'	71.67'	71.61'	35.89'
C-55	00°54'27"	508.00'	8.05'	8.05'	4.02'
C-56	00°54'27"	633.00'	10.03'	10.03'	5.01'
C-57	37°24'27"	658.00'	429.60'	422.01'	222.77'
C-58	13°06'51"	658.00'	150.61'	150.28'	75.63'
C-59	02°01'05"	798.00'	28.11'	28.10'	14.05'
C-60	04°21'13"	683.00'	52.02'	52.01'	26.02'
C-61	04°42'01"	683.00'	56.03'	56.01'	28.03'
C-62	04°52'31"	683.00'	58.12'	58.10'	29.08'
C-63	06°39'30"	683.00'	79.37'	79.33'	39.73'
C-64	04°13'07"	798.00'	58.76'	58.74'	29.39'
C-65	06°05'00"	798.00'	84.73'	84.69'	42.40'

NOTE: FOR CONTINUATION OF CURVE DATA SEE SHEET 3 OF 3.

REPLAT OF BOCA LAGO (PB 31, PP. 62-71)

S.W. COR. TR. #31, P.B.F. CO. PLAT NO. 3

P.O.B.

The Timbers of Boca

BENCH MARK
land surveying and mapping, inc.

CONRAD W. SCHAEFER CONSULTING ENGINEERS, INC.
PALM BEACH COUNTY, FLORIDA

THE TIMBERS OF BOCA
37/157

DATE	SCALE	APPROVED	FILE NO.	SHEET OF
7-7-78	1"=50'			2 3

THE TIMBERS OF BOCA
Being a replat of a portion of Block 78, Palm Beach Farms Co. Plat No. 3, (P.B. 2, Pp. 45-54), Palm Beach County, Florida. JUNE, 1978

1000-056

19/4/78