

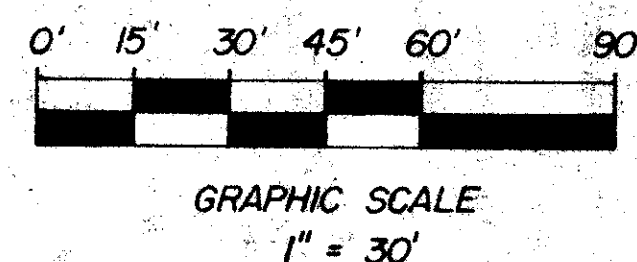
The French Quarter

SHEET 2 OF 2

P.U.D. TABULATIONS

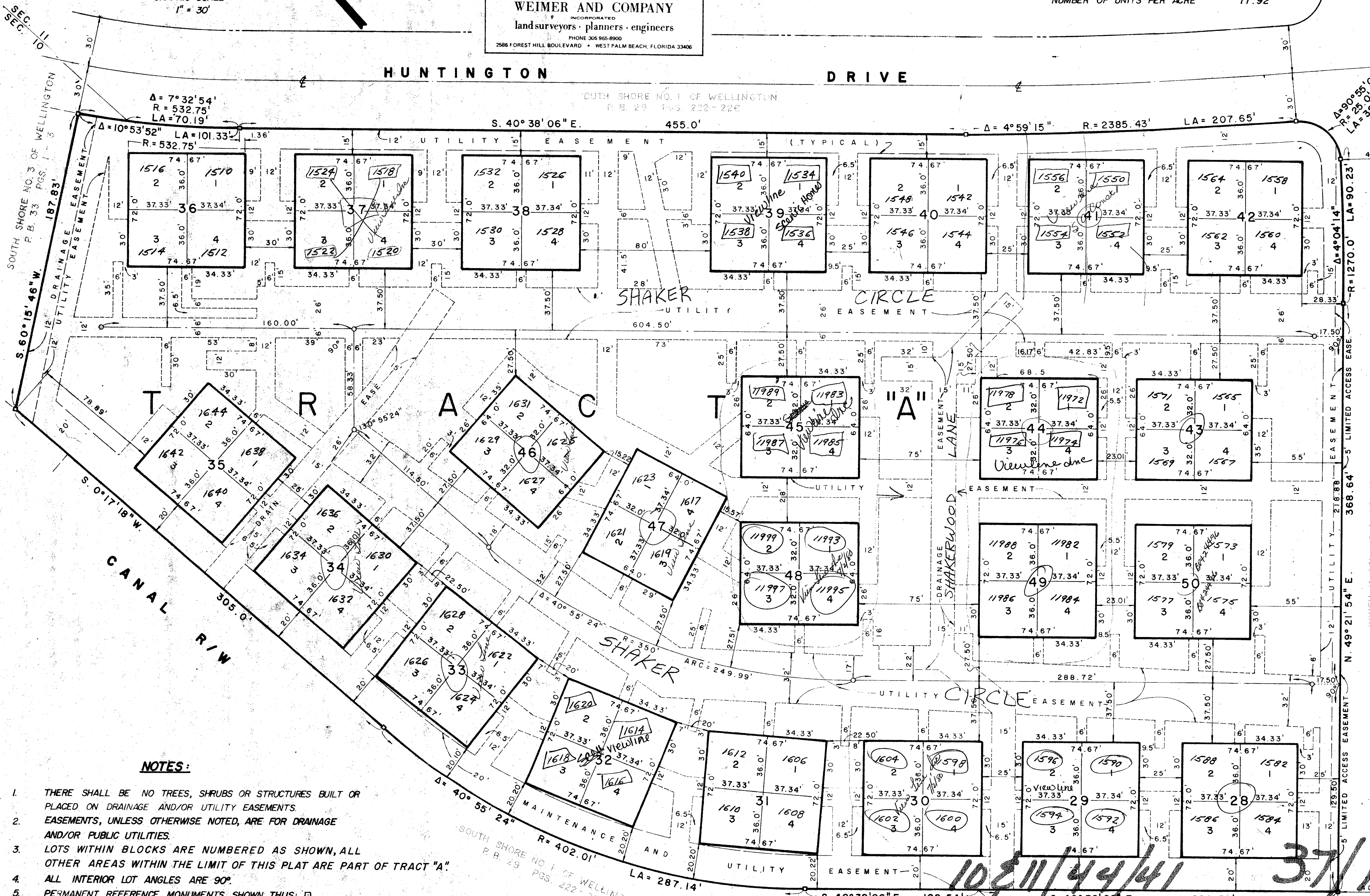
TOTAL ACREAGE	7.72 ACRES
TOTAL NO. OF BUILDINGS	23
NUMBER OF UNITS PER BUILDING	4
TOTAL NO. OF UNITS	92
NUMBER OF UNITS PER ACRE	11.92

128



WEIMER AND COMPANY
 INCORPORATED
 land surveyors · planners · engineers
 PHONE 305 965-8900
 2586 FOREST HILL BOULEVARD · WEST PALM BEACH, FLORIDA 33406

HUNTINGTON DRIVE



FLOOD ZONE "B"

NOTES:

1. THERE SHALL BE NO TREES, SHRUBS OR STRUCTURES BUILT OR PLACED ON DRAINAGE AND/OR UTILITY EASEMENTS.
2. EASEMENTS, UNLESS OTHERWISE NOTED, ARE FOR DRAINAGE AND/OR PUBLIC UTILITIES.
3. LOTS WITHIN BLOCKS ARE NUMBERED AS SHOWN, ALL OTHER AREAS WITHIN THE LIMIT OF THIS PLAT ARE PART OF TRACT "A".
4. ALL INTERIOR LOT ANGLES ARE 90°.
5. PERMANENT REFERENCE MONUMENTS SHOWN THUS: □
PERMANENT CONTROL POINTS SHOWN THUS: ○
6. BEARINGS SHOWN HEREON ARE BASED ON THE PLAT OF SOUTH SHORE NO. 1 OF WELLINGTON AS RECORDED IN P.B. 29, PGS. 222-226.

0332-023

62

37/128

The French Quarter Plat # 3 - Wellington P. 128

THIS INSTRUMENT WAS PREPARED BY ROLF ERNST WEIMER
 IN THE OFFICE OF WEIMER AND COMPANY, INC.,
 2586 FOREST HILL BOULEVARD, WEST PALM BEACH, FL 33406