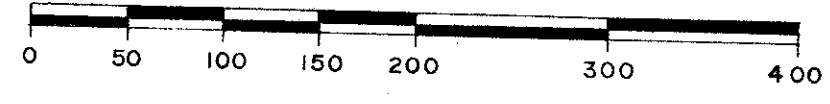


HOLIDAY CITY AT BOCA RATON SECTION 9

A PLAT OF A PORTION OF SECTION 25, TOWNSHIP 47 SOUTH, RANGE 41 EAST
AND A REPLAT OF A PORTION OF BLK.12, FLORIDA FRUIT LAND CO. SUBDIVISION NO. 2 AS RECORDED IN
PLAT BOOK NO.1, PAGE 102, PUBLIC RECORD OF PALM BEACH COUNTY, FLORIDA

PALM BEACH COUNTY, FLORIDA
JOHN A. GRANT, JR., INC. CONSULTING ENGINEERS AND LAND SURVEYORS BOCA RATON, FLORIDA



JANUARY 1979
SHEET 2 OF 2

HOLIDAY CITY AT BOCA RATON SEC. 5 PB.33, PG.168-169
HOLIDAY CITY AT BOCA RATON SEC. 4 PB.33, PG.9-10

113

FLOOD ZONE 'AO'
DEPTH 1'

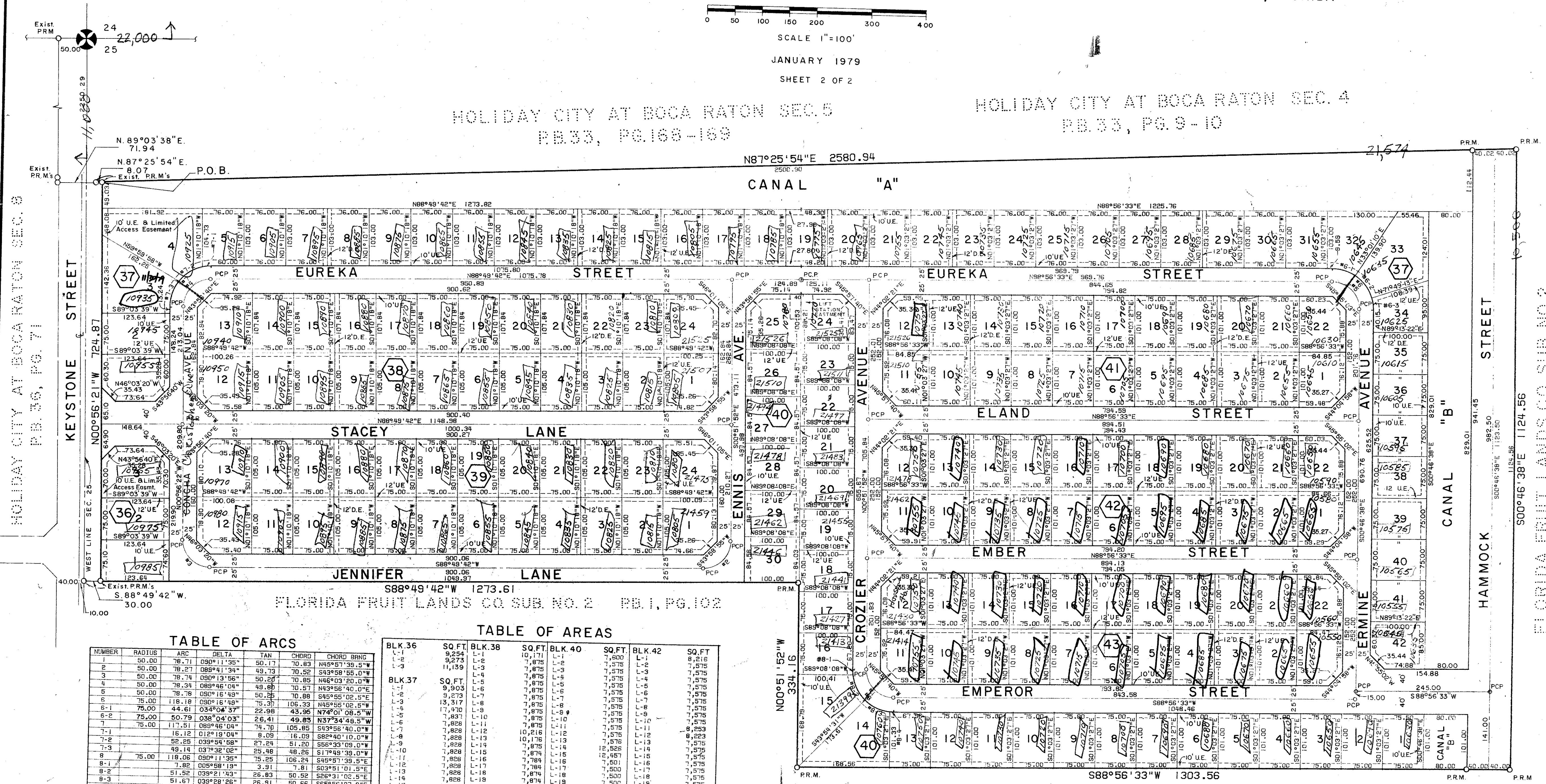


TABLE OF ARCS

NUMBER	RADIUS	ARC	DELTA	TAN	CHORD	CHORD BRNG
1	50.00	76.71	090°11'35"	50.13	70.63	N45°57'39.5"W
2	50.00	76.27	088°41'34"	49.73	70.52	S43°58'55.0"W
3	50.00	76.74	090°13'56"	50.26	70.85	N46°03'20.0"W
4	50.00	76.34	088°46'04"	49.88	70.57	N43°56'40.0"E
5	50.00	76.76	090°16'43"	50.28	70.88	S45°55'02.5"E
6	50.00	76.18	090°16'49"	49.91	70.53	N45°55'02.5"W
6-1	75.00	44.61	034°04'37"	22.98	43.95	N74°01'08.5"W
6-2	75.00	50.79	038°04'03"	26.41	49.85	N37°34'46.5"W
7	75.00	171.51	089°48'04"	74.70	106.85	S43°58'40.0"W
7-1	75.00	15.15	012°01'04"	6.09	16.09	S62°40'10.0"W
7-2	75.00	52.25	039°56'58"	27.24	51.20	S82°21'03.0"W
7-3	75.00	49.14	037°32'02"	25.46	48.26	S17°49'39.0"W
8	75.00	119.06	090°11'35"	75.25	106.24	S45°57'39.5"E
8-1	75.00	1.85	039°46'13"	3.91	7.81	S03°51'01.5"E
8-2	75.00	51.67	039°28'26"	26.91	50.66	S65°56'07.0"E
8-3	75.00	7.05	005°23'07"	3.53	7.05	S88°21'53.5"E
6-3	75.00	22.76	017°24'09"	11.48	22.69	N09°28'42.5"W

TABLE OF AREAS

BLK. 36	SQ. FT.	BLK. 38	SQ. FT.	BLK. 40	SQ. FT.	BLK. 42	SQ. FT.
L-1	9,294	L-1	10,171	L-1	7,800	L-1	8,216
L-2	9,294	L-2	10,171	L-2	7,800	L-2	8,216
L-3	11,139	L-3	7,875	L-3	7,875	L-3	7,575
L-4	7,875	L-4	7,875	L-4	7,875	L-4	7,575
L-5	9,903	L-5	7,875	L-5	7,875	L-5	7,575
L-6	9,273	L-6	7,875	L-6	7,875	L-6	7,575
L-7	13,517	L-7	7,875	L-7	7,875	L-7	7,575
L-8	7,875	L-8	7,875	L-8	7,875	L-8	7,575
L-9	7,875	L-9	7,875	L-9	7,875	L-9	7,575
L-10	7,875	L-10	7,875	L-10	7,875	L-10	7,575
L-11	7,875	L-11	7,875	L-11	7,875	L-11	7,575
L-12	7,875	L-12	7,875	L-12	7,875	L-12	7,575
L-13	7,875	L-13	7,875	L-13	7,875	L-13	7,575
L-14	7,875	L-14	7,875	L-14	7,875	L-14	7,575
L-15	7,875	L-15	7,875	L-15	7,875	L-15	7,575
L-16	7,875	L-16	7,875	L-16	7,875	L-16	7,575
L-17	7,875	L-17	7,875	L-17	7,875	L-17	7,575
L-18	7,875	L-18	7,875	L-18	7,875	L-18	7,575
L-19	7,875	L-19	7,875	L-19	7,875	L-19	7,575
L-20	7,875	L-20	7,875	L-20	7,875	L-20	7,575
L-21	7,875	L-21	7,875	L-21	7,875	L-21	7,575
L-22	7,875	L-22	7,875	L-22	7,875	L-22	7,575
L-23	7,875	L-23	7,875	L-23	7,875	L-23	7,575
L-24	7,875	L-24	7,875	L-24	7,875	L-24	7,575
L-25	7,875	L-25	7,875	L-25	7,875	L-25	7,575
L-26	7,875	L-26	7,875	L-26	7,875	L-26	7,575
L-27	7,875	L-27	7,875	L-27	7,875	L-27	7,575
L-28	7,875	L-28	7,875	L-28	7,875	L-28	7,575
L-29	7,875	L-29	7,875	L-29	7,875	L-29	7,575
L-30	7,875	L-30	7,875	L-30	7,875	L-30	7,575
L-31	7,875	L-31	7,875	L-31	7,875	L-31	7,575
L-32	7,875	L-32	7,875	L-32	7,875	L-32	7,575
L-33	7,875	L-33	7,875	L-33	7,875	L-33	7,575
L-34	7,875	L-34	7,875	L-34	7,875	L-34	7,575
L-35	7,875	L-35	7,875	L-35	7,875	L-35	7,575
L-36	7,875	L-36	7,875	L-36	7,875	L-36	7,575
L-37	7,875	L-37	7,875	L-37	7,875	L-37	7,575
L-38	7,875	L-38	7,875	L-38	7,875	L-38	7,575
L-39	7,875	L-39	7,875	L-39	7,875	L-39	7,575
L-40	7,875	L-40	7,875	L-40	7,875	L-40	7,575
L-41	7,875	L-41	7,875	L-41	7,875	L-41	7,575
L-42	7,875	L-42	7,875	L-42	7,875	L-42	7,575
L-43	7,875	L-43	7,875	L-43	7,875	L-43	7,575
L-44	7,875	L-44	7,875	L-44	7,875	L-44	7,575
L-45	7,875	L-45	7,875	L-45	7,875	L-45	7,575
L-46	7,875	L-46	7,875	L-46	7,875	L-46	7,575
L-47	7,875	L-47	7,875	L-47	7,875	L-47	7,575
L-48	7,875	L-48	7,875	L-48	7,875	L-48	7,575
L-49	7,875	L-49	7,875	L-49	7,875	L-49	7,575
L-50	7,875	L-50	7,875	L-50	7,875	L-50	7,575
L-51	7,875	L-51	7,875	L-51	7,875	L-51	7,575
L-52	7,875	L-52	7,875	L-52	7,875	L-52	7,575
L-53	7,875	L-53	7,875	L-53	7,875	L-53	7,575
L-54	7,875	L-54	7,875	L-54	7,875	L-54	7,575
L-55	7,875	L-55	7,875	L-55	7,875	L-55	7,575
L-56	7,875	L-56	7,875	L-56	7,875	L-56	7,575
L-57	7,875	L-57	7,875	L-57	7,875	L-57	7,575
L-58	7,875	L-58	7,875	L-58	7,875	L-58	7,575
L-59	7,875	L-59	7,875	L-59	7,875	L-59	7,575
L-60	7,875	L-60	7,875	L-60	7,875	L-60	7,575
L-61	7,875	L-61	7,875	L-61	7,875	L-61	7,575
L-62	7,875	L-62	7,875	L-62	7,875	L-62	7,575
L-63	7,875	L-63	7,875	L-63	7,875	L-63	7,575
L-64	7,875	L-64	7,875	L-64	7,875	L-64	7,575
L-65	7,875	L-65	7,875	L-65	7,875	L-65	7,575
L-66	7,875	L-66	7,875	L-66	7,875	L-66	7,575
L-67	7,875	L-67	7,875	L-67	7,875	L-67	7,575
L-68	7,875	L-68	7,875	L-68	7,875	L-68	7,575
L-69	7,875	L-69	7,875	L-69	7,875	L-69	7,575
L-70	7,875	L-70	7,875	L-70	7,875	L-70	7,575
L-71	7,875	L-71	7,875	L-71	7,875	L-71	7,575
L-72	7,875	L-72	7,875	L-72	7,875	L-72	7,575
L-73	7,875	L-73	7,875	L-73	7,875	L-73	7,575
L-74	7,875	L-74	7,875	L-74	7,875	L-74	7,575
L-75	7,875	L-75	7,875	L-75	7,875	L-75	7,575
L-76	7,875	L-76	7,875	L-76	7,875	L-76	7,575
L-77	7,875	L-77	7,875	L-77	7,875	L-77	7,575
L-78	7,875	L-78	7,875	L-78	7,875	L-78	7,575
L-79	7,875	L-79	7,875	L-79	7,875	L-79	7,575
L-80	7,875	L-80	7,875	L-80	7,875	L-80	7,575
L-81	7,875	L-81	7,875	L-81	7,875	L-81	7,575
L-82	7,875	L-82	7,875	L-82	7,875	L-82	7,575
L-83	7,875	L-83	7,875	L-83	7,875	L-83	7,575
L-84	7,875	L-84	7,875	L-84	7,875	L-84	7,575
L-85	7,875	L-85	7,875	L-85	7,875	L-85	7,575
L-86	7,875	L-86	7,875	L-86	7,875	L-86	7,575
L-87	7,875	L-87	7,875	L-87	7,875	L-87	7,575
L-88	7,875	L-88	7,875	L-88	7,875	L-88	7,575
L-89	7,875	L-89	7,875	L-89	7,875	L-89	7,575
L-90	7,875	L-90	7,875	L-90	7,875	L-90	7,575
L-91	7,875	L-91	7,875	L-91	7,875	L-91	7,575
L-92	7,875	L-92	7,875	L-92	7,875	L-92	7,575
L-93	7,875	L-93	7,875	L-93	7,875	L-93	7,575
L-94	7,875	L-94	7,875	L-94	7,875	L-94	7,575
L-95	7,875	L-95	7,875	L-95	7,875	L-95	7,575
L-96	7,875	L-96	7,875	L-96	7,875	L-96	7,575
L-97	7,875	L-97	7,875	L-97	7,875	L-97	7,575
L-98	7,875	L-98	7,875	L-98	7,875	L-98	7,575
L-99	7,875	L-99	7,875	L-99	7,875	L-99	7,575
L-100	7,875	L-100	7,875	L-100	7,875	L-100	7,575

FLORIDA FRUIT LANDS CO. SUB. NO. 2
P.B. 1, PG. 102

- NOTES**
- P. R. M. Indicates Permanent Reference Monuments
 - P. C. P. Indicates Permanent Control Points
 - U. E. Utility Easement, 6' rear and side lot line, 10' front
 - D. E. Drainage Easement, 6' each side of lot line

Bearings shown hereon are based on a bearing of S.0°56'21"E. along the West line of Section 25, Township 47 South, Range 41 East, as recorded in Holiday City at Boca Raton Section 8, in Plat Book 36, Pages 70 & 71 of the Public Records of Palm Beach County, Florida.

There will be no buildings, trees, or shrubs placed on easements.

TURNOUT REQUIRED

0478-300

This instrument was prepared by:
John A. Grant, Jr., John A. Grant, Jr., Inc.
3333 North Federal Hwy, Boca Raton, Fla.

25/47/41 = rs
Flood Zone AO-1
FAR S. Zone 25
Quad 69

37/113

HOLIDAY CITY AT BOCA RATON

Unit 9