

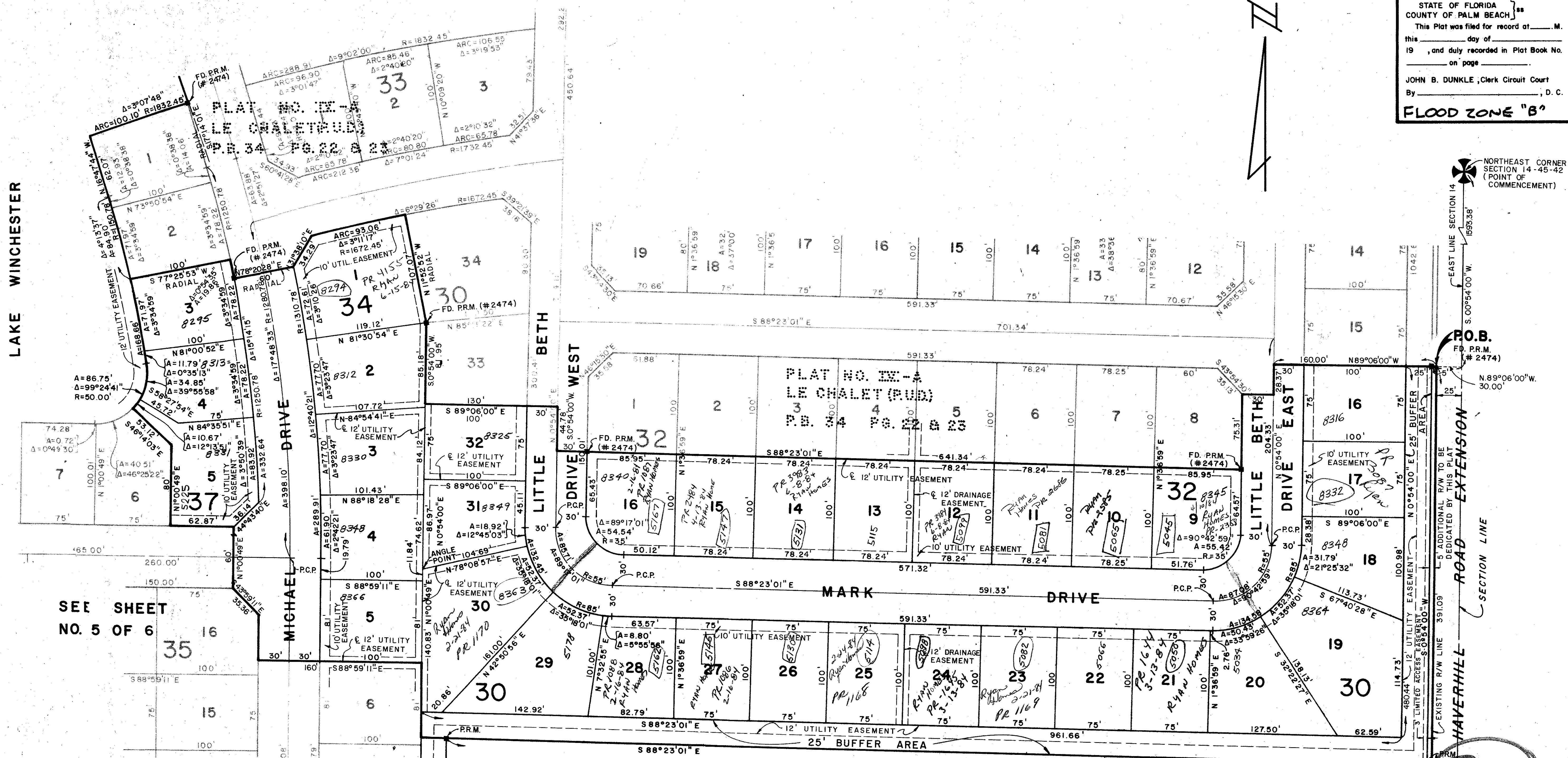
PLAT NO. IV-B LE CHALET (P.U.D.)

IN SECTIONS 14 & 15, TOWNSHIP 45 SOUTH, RANGE 42 EAST
PALM BEACH COUNTY, FLORIDA
IN 6 SHEETS SHEET NO. 2

58

STATE OF FLORIDA }
COUNTY OF PALM BEACH }
This Plat was filed for record at _____ M.
this _____ day of _____
19 _____, and duly recorded in Plat Book No. _____
on _____ page _____
JOHN B. DUNKLE, Clerk Circuit Court
By _____, D. C.
FLOOD ZONE "B"

LAKE WINCHESTER



SEE SHEET
NO. 5 OF 6

NOT PLATTED

0270-307
14 & 15 / 45 / 42
34
37/58

Le Chalet Plat # IV - Pud



THIS INSTRUMENT WAS PREPARED BY R.L. SHEPARD IN THE OFFICE OF

ROSSI AND MALVASI ENGINEERS, INC. WEST PALM BEACH, FLORIDA		PLAT NO. IV-B LE CHALET (P.U.D.) IN 6 SHEETS SHEET NO. 2	
Date	MAY, 1977	Drawn	F. McELROY
Approved		Checked	
Scale	1" = 50'	Sheet	2 of 6
Job No.	4203-77	File No.	