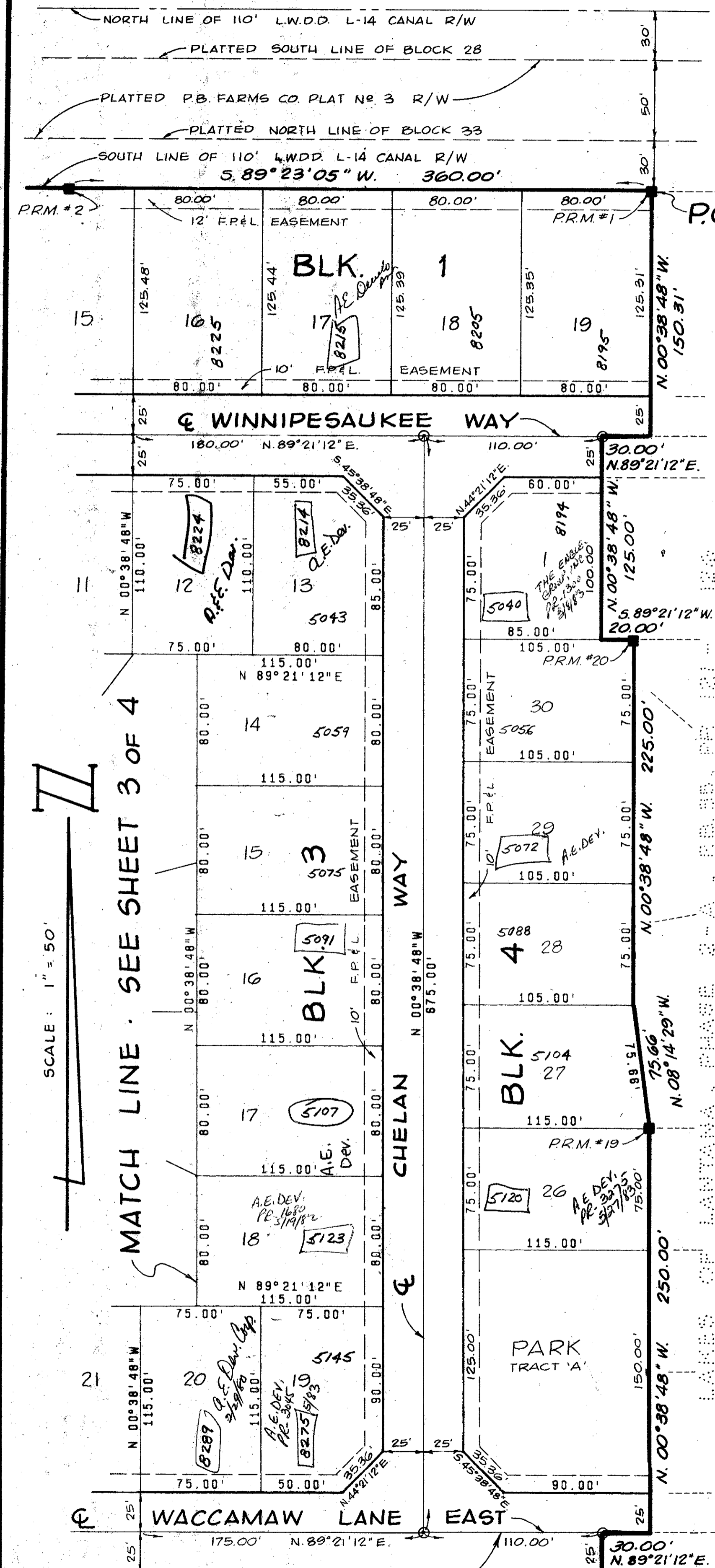


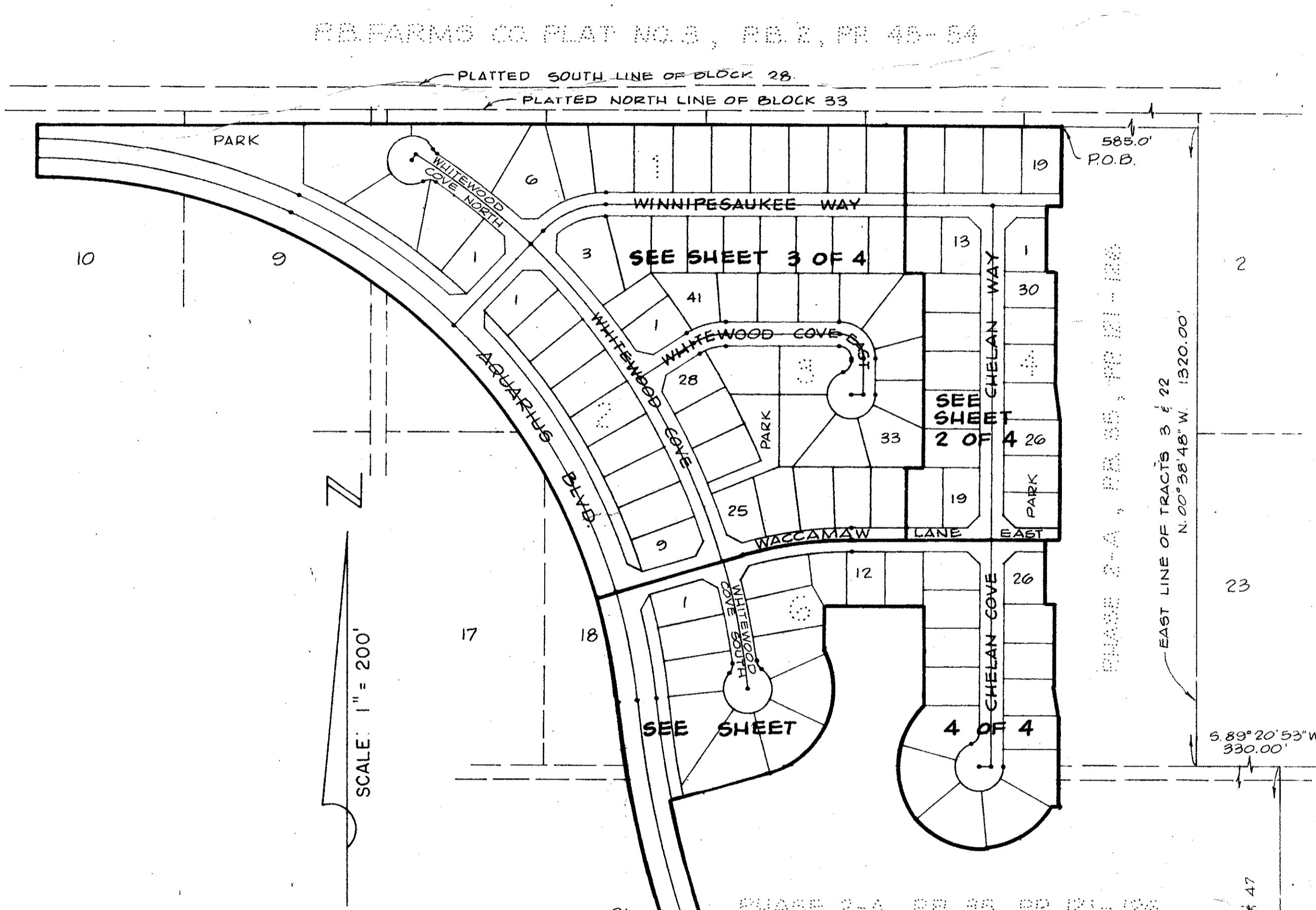
LAKES OF LANTANA

PHASE 2-B



NOTE: THE CURVE DATA TABLE BELOW PERTAINS TO SHEET 3 OF 4.

C. NO.	CHORD BEARING	CHORD	RADIUS	DELTA	ARC	TANGENT
1	S 63°37'07"E	97.00'	1315.00'	04°13'38"	97.02'	48.53'
2	S 57°50'09"E	168.31'	1315.00'	07°20'18"	168.42'	84.33'
3	S 52°37'30"E	70.78'	1315.00'	03°05'00"	70.77'	35.39'
4	S 48°32'41"E	70.62'	1315.00'	03°04'38"	70.63'	35.32'
5	N 88°58'10"E	2.01'	150.00'	00°46'03"	2.01'	1.00'
6	S 41°12'30"E	70.78'	1315.00'	03°05'00"	70.77'	35.39'
7	S 38°07'30"E	70.78'	1315.00'	03°05'00"	70.77'	35.39'
8	S 35°02'30"E	70.78'	1315.00'	03°05'00"	70.77'	35.39'
9	S 31°57'30"E	70.78'	1315.00'	03°05'00"	70.77'	35.39'
10	S 28°52'30"E	70.78'	1315.00'	03°05'00"	70.77'	35.39'
11	S 25°47'30"E	70.78'	1315.00'	03°05'00"	70.77'	35.39'
12	N 85°48'41"E	19.69'	25.00'	46°22'55"	20.24'	10.71'
13	S 19°37'41"E	70.62'	1315.00'	03°04'38"	70.63'	35.32'
14	S 31°57'30"E	569.32'	1290.00'	25°29'47"	574.04'	291.85'
15	S 31°57'30"E	645.29'	1250.00'	29°55'00"	652.68'	333.96'
16	S 56°19'28"E	408.65'	1250.00'	18°48'58"	410.49'	207.11'
17	S 57°25'48"E	372.56'	1290.00'	16°36'20"	373.87'	188.25'
18	N 34°41'12"E	81.61'	50.00'	109°23'47"	95.47'	70.61'
19	S 58°14'02"E	53.56'	50.00'	64°45'48"	56.52'	31.71'
20	S 52°25'02"E	139.35'	1505.00'	05°18'25"	139.40'	69.75'
21	S 51°42'35"E	247.33'	1480.00'	09°35'10"	247.61'	124.10'
22	S 49°13'51"E	28.00'	1505.00'	01°03'58"	28.00'	14.00'
23	N 81°07'48"E	68.88'	205.00'	19°22'20"	69.31'	34.99'
24	N 78°22'31"E	61.09'	205.00'	17°07'10"	61.25'	30.86'
25	N 88°38'39"E	5.07'	205.00'	01°25'06"	5.07'	2.54'
26	N 68°13'08"E	141.44'	180.00'	46°18'12"	145.36'	75.91'
27	S 42°33'13"E	122.30'	1505.00'	04°39'27"	122.34'	61.20'
28	S 38°39'15"E	82.51'	1505.00'	03°08'29"	82.52'	41.27'
29	S 36°03'41"E	53.69'	1505.00'	02°02'38"	53.69'	26.85'
30	S 40°02'30"E	354.32'	1480.00'	13°45'00"	355.17'	178.44'
31	S 30°16'19"E	53.69'	1505.00'	02°02'38"	53.69'	26.85'
32	S 27°45'00"E	78.79'	1505.00'	03°00'00"	78.80'	39.41'
33	S 24°45'00"E	78.79'	1505.00'	03°00'00"	78.80'	39.41'
34	S 22°38'14"E	32.19'	1505.00'	01°13'32"	32.19'	16.10'
35	S 20°26'54"E	82.79'	1505.00'	03°09'08"	82.80'	41.41'
36	S 25°05'00"E	416.22'	1480.00'	16°10'00"	417.60'	210.20'
37	N 75°10'29"E	52.55'	825.00'	03°39'01"	52.56'	26.29'
38	N 78°30'00"E	71.97'	825.00'	05°00'00"	71.99'	36.02'
39	N 84°30'00"E	71.97'	825.00'	05°00'00"	71.99'	36.02'
40	N 88°10'38"E	33.88'	825.00'	02°21'12"	33.89'	16.95'
41	N 81°10'38"E	227.58'	800.00'	16°21'12"	228.34'	114.95'
42	S 29°43'14"E	140.10'	1825.00'	04°56'28"	140.14'	70.11'
43	S 39°09'38"E	111.21'	1825.00'	03°55'19"	111.24'	55.64'
44	N 79°05'38"E	70.00'	150.00'	02°31'10"	70.25'	36.48'
45	N 62°47'29"E	31.14'	150.00'	11°54'57"	31.93'	15.95'
46	N 78°40'03"E	51.67'	150.00'	19°50'12"	51.93'	26.23'
47	N 88°58'10"E	2.01'	150.00'	00°46'03"	2.01'	1.00'
48	S 36°18'47"E	134.90'	1625.00'	04°45'28"	134.94'	67.51'
49	S 71°49'22"E	48.40'	75.00'	37°38'51"	49.28'	25.57'
50	S 34°22'29"E	47.90'	75.00'	37°14'56"	48.76'	25.28'
51	N 34°37'04"E	57.74'	50.00'	70°31'44"	61.55'	35.36'
52	S 85°37'41"E	28.31'	25.00'	63°30'10"	27.71'	15.47'
53	S 50°00'07"E	54.92'	1455.00'	02°09'48"	54.93'	27.47'
54	S 43°49'53"E	54.92'	1455.00'	02°09'48"	54.93'	27.47'
55	S 41°12'30"E	78.29'	1455.00'	03°05'00"	78.30'	39.16'
56	S 38°07'30"E	78.29'	1455.00'	03°05'00"	78.30'	39.16'
57	S 35°02'30"E	78.29'	1455.00'	03°05'00"	78.30'	39.16'
58	S 31°57'30"E	78.29'	1455.00'	03°05'00"	78.30'	39.16'
59	S 28°52'30"E	78.29'	1455.00'	03°05'00"	78.30'	39.16'
60	S 25°47'30"E	78.29'	1455.00'	03°05'00"	78.30'	39.16'
61	S 22°42'30"E	78.29'	1455.00'	03°05'00"	78.30'	39.16'
62	S 20°05'07"E	54.92'	1455.00'	02°09'48"	54.93'	27.47'
63	N 24°45'00"W	85.08'	1825.00'	03°00'00"	85.08'	42.55'
64	S 27°45'00"E	85.08'	1825.00'	03°00'00"	85.08'	42.55'
65	S 30°40'54"E	81.20'	1825.00'	02°51'48"	81.21'	40.61'
66	N 65°48'56"E	31.23'	100.00'	17°57'51"	31.35'	15.81'
67	N 82°04'31"E	25.34'	100.00'	14°33'21"	25.40'	12.77'
68	S 35°30'32"E	89.30'	1825.00'	03°08'57"	89.31'	44.87'
69	S 37°53'15"E	45.62'	1825.00'	01°36'31"	45.62'	22.81'
70	S 45°38'48"E	35.36'	25.00'	90°00'00"	39.27'	25.00'
71	N 73°37'11"E	84.08'	155.00'	31°28'01"	85.13'	43.67'
72	S 68°41'44"E	75.11'	50.00'	97°22'04"	84.97'	58.88'
73	S 28°17'30"E	43.28'	50.00'	51°17'24"	44.78'	24.00'
74	S 78°45'28"E	45.12'	50.00'	53°38'28"	46.81'	25.28'
75	N 49°23'46"E	42.30'	50.00'	50°03'06"	43.68'	23.34'
76	N 11°51'42"E	21.66'	50.00'	25°01'01"	21.83'	11.09'
77	N 34°37'04"E	28.87'	25.00'	70°31'44"	30.77'	17.88'
78	S 40°27'42"E	12.61'	25.00'	29°13'08"	12.75'	6.52'
79	S 41°21'58"E	398.41'	1210.00'	48°43'58"	1029.15'	548.02'
80	S 78°10'28"E	395.71'	918.38'	34°52'59"	398.84'	205.61'
81	S 78°10'28"E	412.94'	958.36'	24°52'59"	416.21'	211.44'
82	S 78°10'28"E	430.18'	998.36'	24°52'59"	433.58'	220.26'
83	N 85°48'41"E	19.69'	25.00'	46°22'55"	20.24'	10.71'
84	S 82°28'13"E	7.44'	25.00'	17°07'15"	7.47'	3.76'
85	S 52°28'48"E	70.93'	1455.00'	02°47'38"	70.93'	35.47'
86	S 44°17'19"E	70.62'	1315.00'	03°04'38"	70.63'	35.32'
87	S 22°42'30"E	70.78'	1315.00'	03°05'00"	70.77'	35.39'
88	S 08°11'54"E	19.71'	75.00'	15°06'12"	19.77'	9.94'
89	S 45°38'48"E	70.71'	50.00'	80°00'00"	78.54'	50.00'



ACREAGE	
TOTAL AREA OF PHASE 2-B	37.44 Ac.
TOTAL LOT AREA	32.32 Ac.
TOTAL ROAD R/W AREA	11.47 Ac.
TOTAL PARKS & BUFFERS	3.65 Ac.
RESIDENTIAL OPEN SPACE (65% of Lot Area)	14.51 Ac.
TOTAL OPEN SPACE	18.16 Ac. or 48% of Net Area
TOTAL NUMBER OF LOTS	102
DENSITY	2.72 Units / Acre

32/44/72 KEY MAP 37/45
1000-079

MATCH LINE SEE SHEET 4 OF 4

Lakes of Lantana Phase 2-B PUD

ADAIR & BROS., INC. ENGINEERS & CONSULTING SURVEYORS
WILSON LAKES OF LANTANA AS SHOWN 8/78
FP1055 2 4