

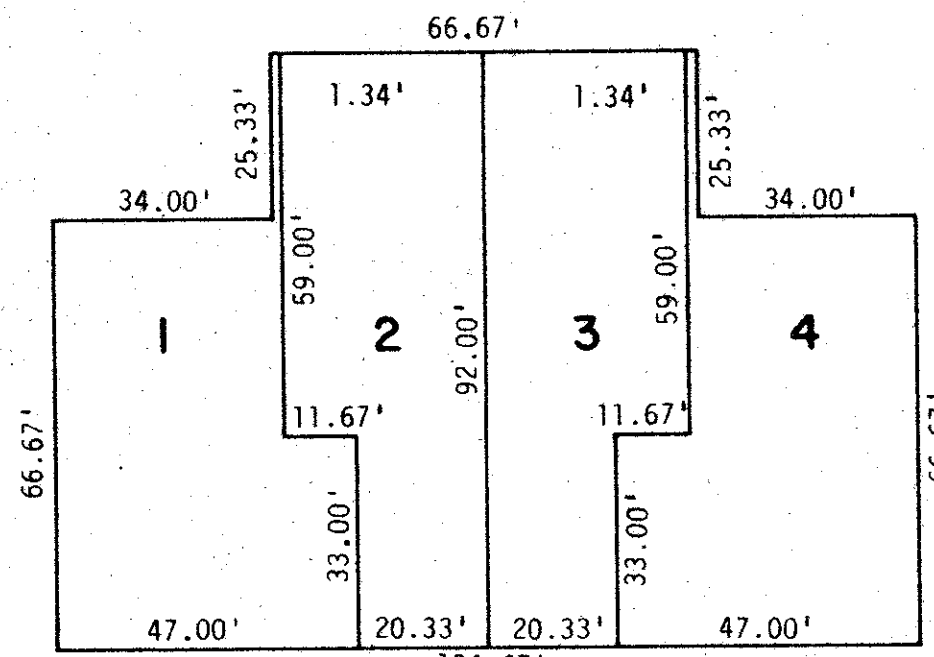
PLAT OF FOREST GROVE PATIO HOMES

A PORTION OF INDIAN SPRING A PLANNED UNIT DEVELOPMENT
 A PARCEL OF LAND IN THE SOUTHWEST ONE-QUARTER
 OF SECTION 35, TOWNSHIP 45 SOUTH, RANGE 42 EAST
 PALM BEACH COUNTY, FLORIDA

SHEET 2 OF 2

STATE OF FLORIDA
 COUNTY OF PALM BEACH
 THIS PLAT WAS FILED FOR
 RECORD AT
 THIS DAY OF
 AD, 1978 AND DULY RECORDED
 IN PLAT BOOK ON PAGES
 AND
 JOHN B. DUNKLE, CLERK
 CIRCUIT COURT BY: DC

192

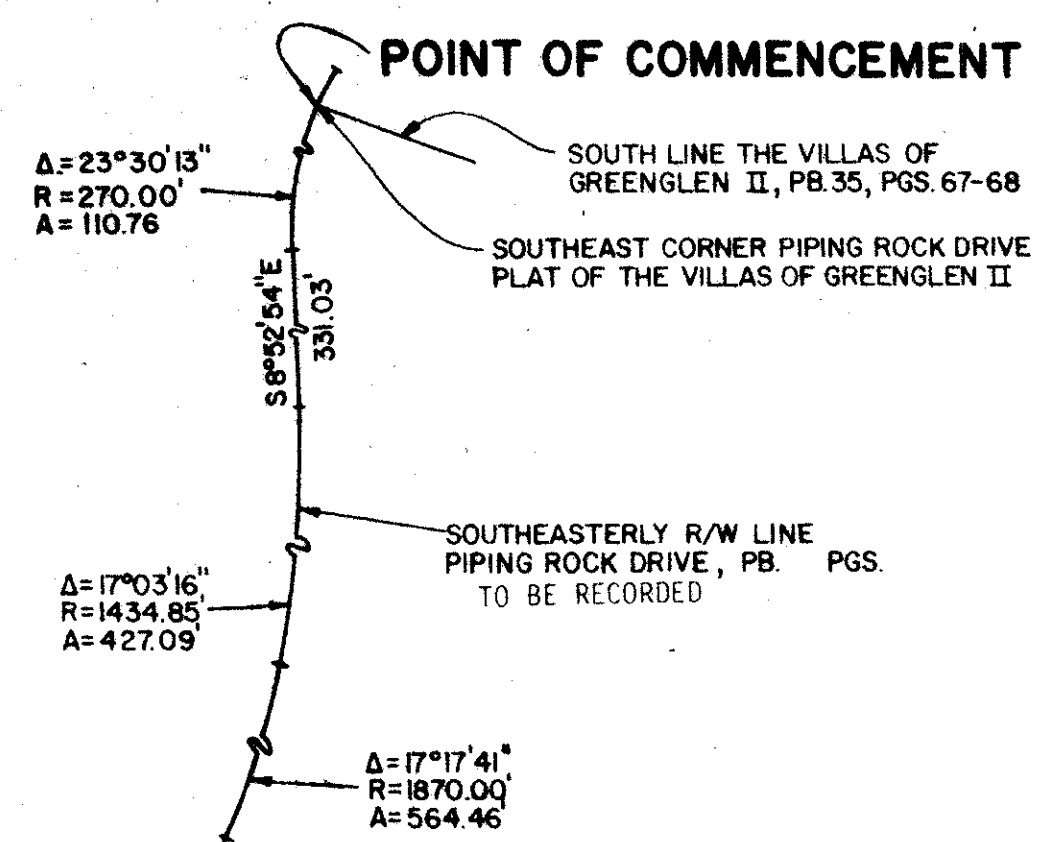
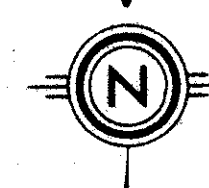
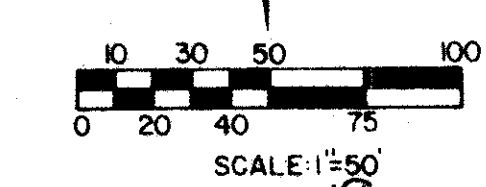


TYPICAL BUILDING ENVELOPE TYPE 1
 SCALE: 1"=30'

ALL BUILDING CORNERS ARE 90° UNLESS OTHERWISE SHOWN.

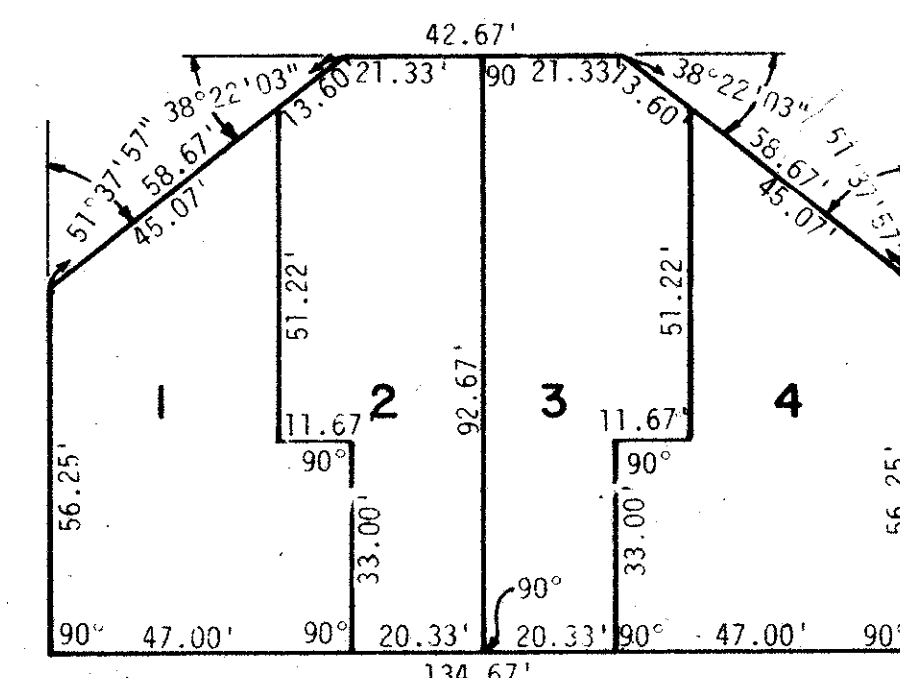
UNPLATTED

UNPLATTED



CURVE TABLE "C" NO.

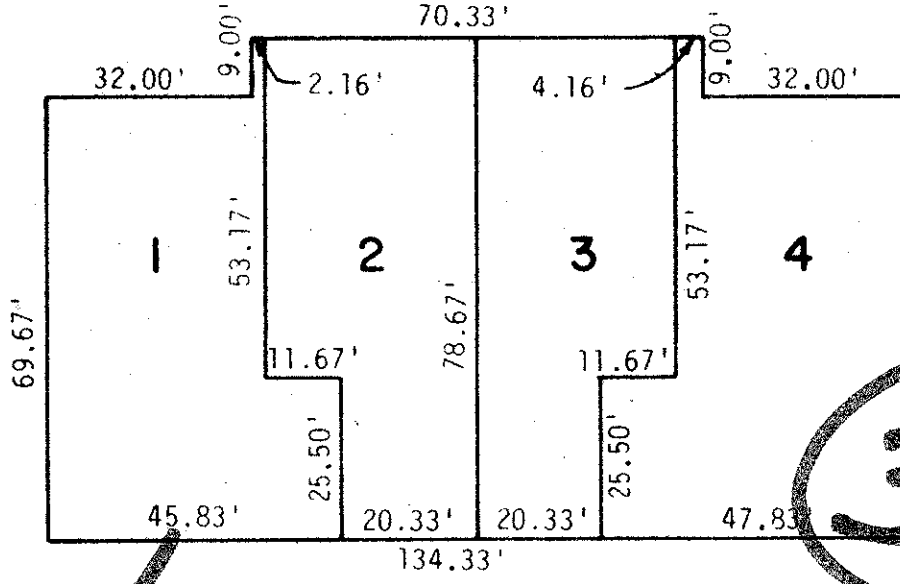
CURVE NO.	RADIUS	DELTA	ARC
C-1	610.00'	7°28'02"	79.50'
C-2	580.00'	7°28'02"	75.59'
C-3	550.00'	7°28'02"	71.68'
C-4	80.00'	80°59'21"	113.08'
C-5	50.00'	80°59'21"	70.69'
C-6	20.00'	80°59'21"	28.27'
C-7	65.00'	94°27'23"	107.16'
C-8	50.00'	94°27'23"	82.43'
C-9	35.00'	94°27'23"	57.70'
C-10	70.00'	90°00'00"	109.96'
C-11	55.00'	90°00'00"	86.39'
C-12	40.00'	90°00'00"	62.83'
C-13	70.00'	80°26'42"	98.28'
C-14	55.00'	80°26'42"	77.22'
C-15	40.00'	80°26'42"	56.16'
C-16	1480.00'	6°38'32"	171.57'
C-17	1450.00'	6°38'32"	168.09'
C-18	1420.00'	6°38'32"	164.62'
C-19	50.00'	8°31'49"	7.44'
C-20	50.00'	16°04'47"	12.03'
C-21	55.00'	13°06'20"	14.58'
C-22	1450.00'	1°04'29"	27.20'
C-23	996.04'	3°50'17"	66.72'
C-24	996.04'	3°50'17"	66.72'



TYPICAL BUILDING ENVELOPE TYPE 2
 SCALE: 1"=30'

ALL BUILDING CORNERS ARE 90° UNLESS OTHERWISE SHOWN.

0259-305

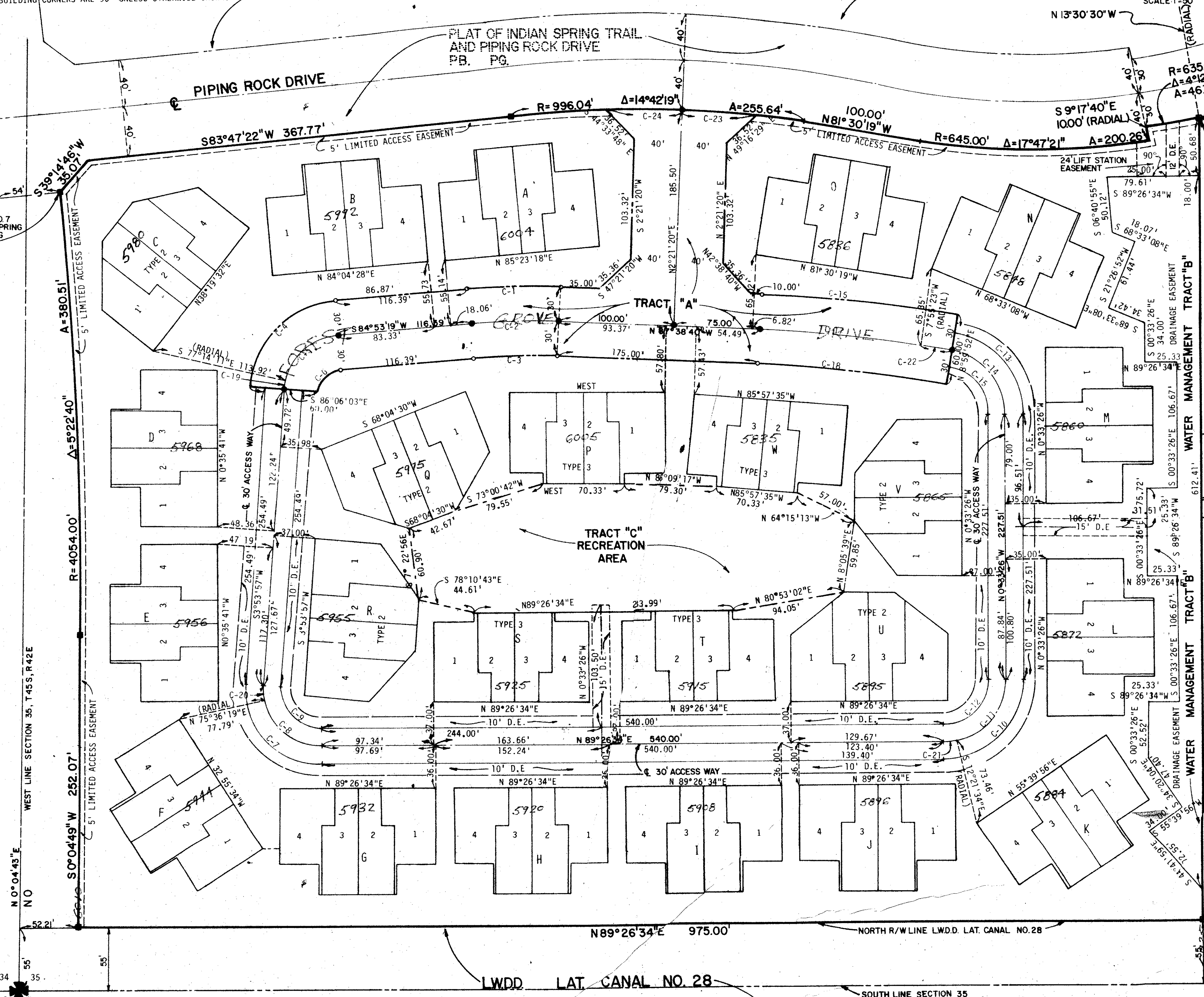


TYPICAL BUILDING ENVELOPE TYPE 3
 SCALE: 1"=30'

ALL BUILDING CORNERS ARE 90° UNLESS OTHERWISE SHOWN.

35/45/42

36/192



WEST LINE SECTION 35, T45S, R42E
 SOUTH LINE SECTION 35
 NORTH R/W LINE LWDD. LAT. CANAL NO. 28
 LWDD. LAT. CANAL NO. 28

NOTES:
 1. ALL BUILDING ENVELOPES ARE TYPE 1 UNLESS OTHERWISE NOTED.
 THE CENTER POINTS OF ALL BUILDING ENVELOPES ARE 90° TO THE
 UNLESS OTHERWISE SHOWN.

Forest Grove Patio Homes - Indian Spring Park

EDM EDM SURVEYING & MAPPING INC.
 2300 PALM BEACH LAKES BOULEVARD
 SUITE 109 305 684 3770
 WEST PALM BEACH, FL 33409

DATE: NOV 1978
 SCALE: 1"=50'
 PLAT OF FOREST GROVE PATIO HOMES