

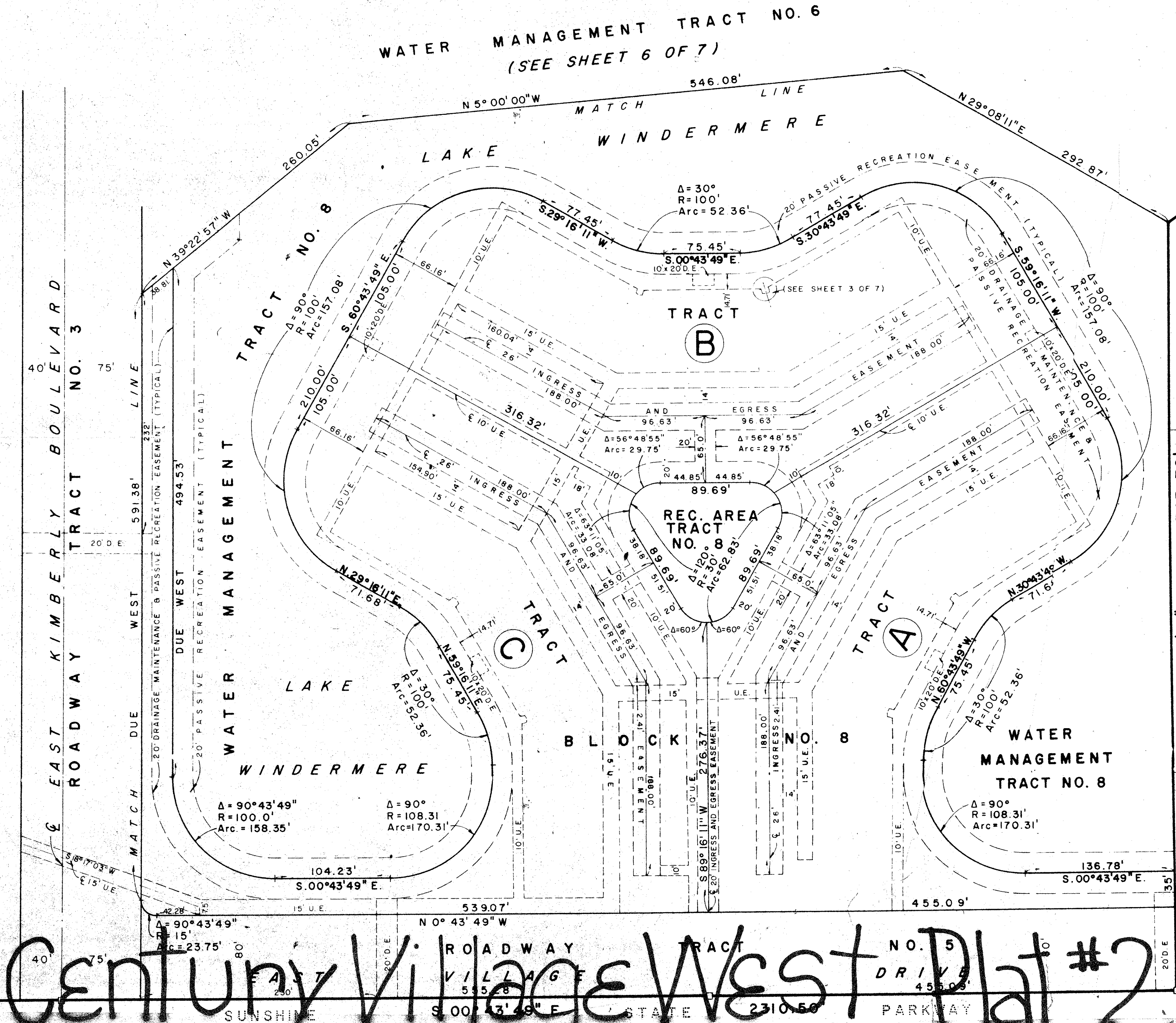
154

WATER MANAGEMENT TRACT NO. 6  
(SEE SHEET 6 OF 7)

**PLAT NO. 2**  
**Century Village West**

SHEET 7 OF 7 SHEETS

**WEIMER AND COMPANY**  
INCORPORATED  
planners • land surveyors • engineers  
land development consultants



TR. 58  
TR. 59  
TR. 60  
PALM BEACH FARMS COMPANY PLAT NO. 3 (P.B. 2 P.O.S. 45-54)

N. 89°16'11" E. 743.76'

8/47/42 (53)

0221-302

36/15

BLOCK NO. 6  
(SEE SHEET 5 OF 7)

**Century Village West Plat #2**