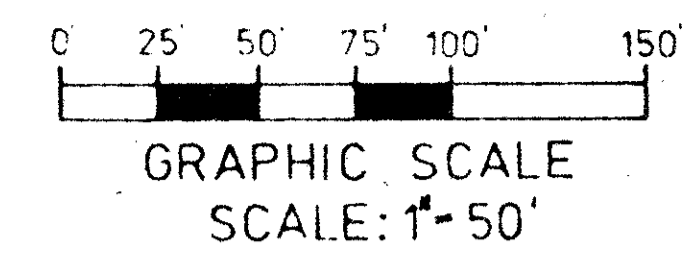


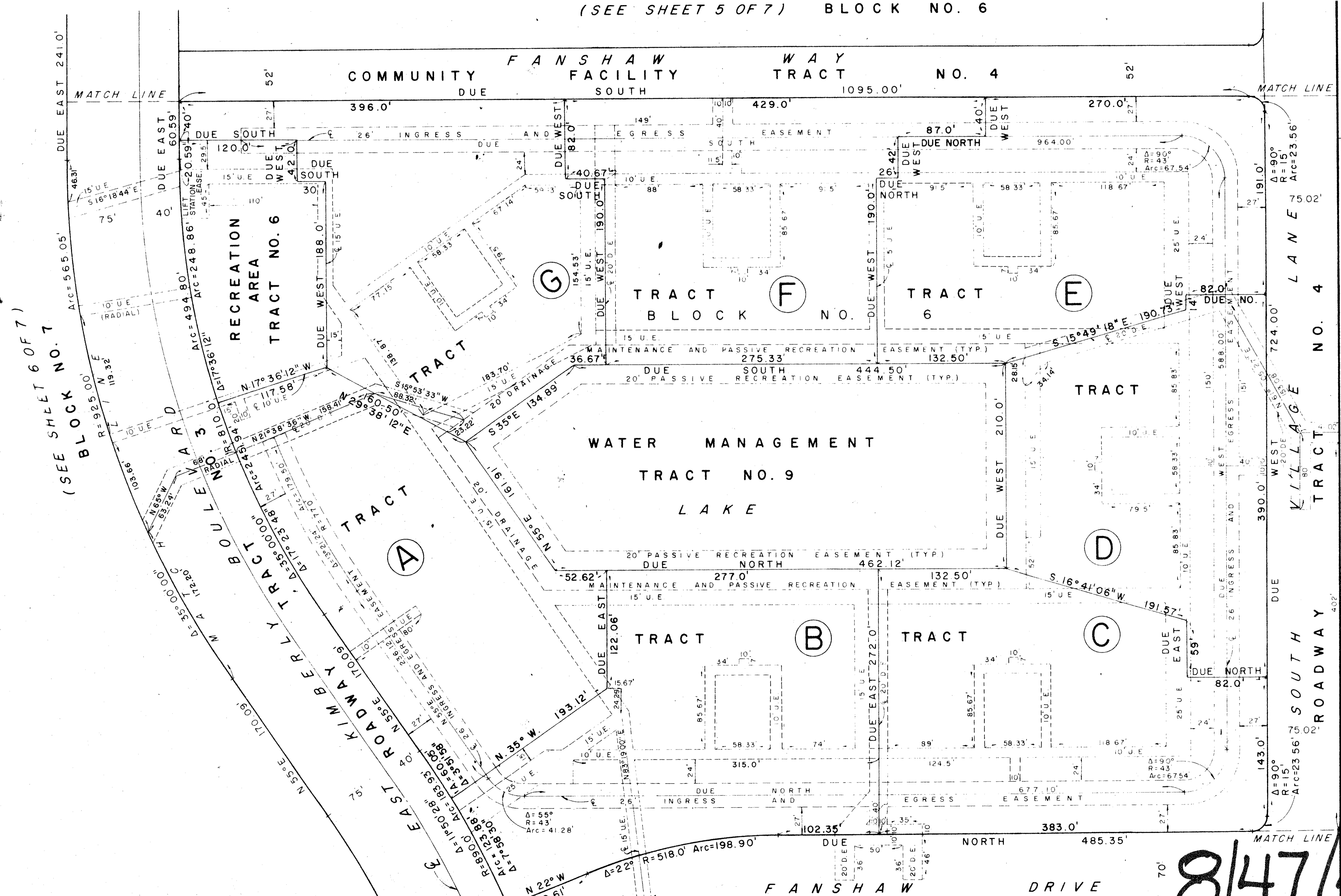
PLAT NO. 2
Century Village West

SHEET 4 OF 7 SHEETS



151

(SEE SHEET 5 OF 7) BLOCK NO. 6



WEIMER AND COMPANY
INCORPORATED
planners • land surveyors • engineers
land development consultants

53

0221-303

8/47/42

36/151

Century Village West Plat 2

(SEE SHEET 2 OF 7) BLOCK NO. 4