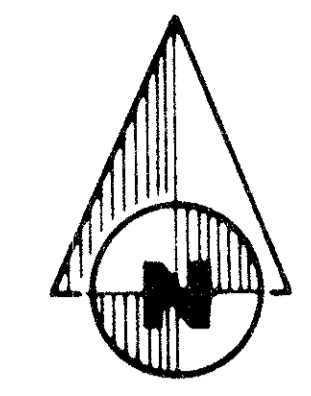


A PLANNED UNIT DEVELOPMENT  
**THE CYPRESSES OF BOCA LAGO**

BEING A REPLAT OF A PART OF THE "REPLAT OF BOCA LAGO (P.U.D.)" AS RECORDED IN PLAT BOOK 31, PAGES 62-71 (INCLUSIVE), PUBLIC RECORDS, PALM BEACH COUNTY, FLORIDA, AND LYING IN SECTION 20, TWP. 47 SO., RGE 42 EAST.

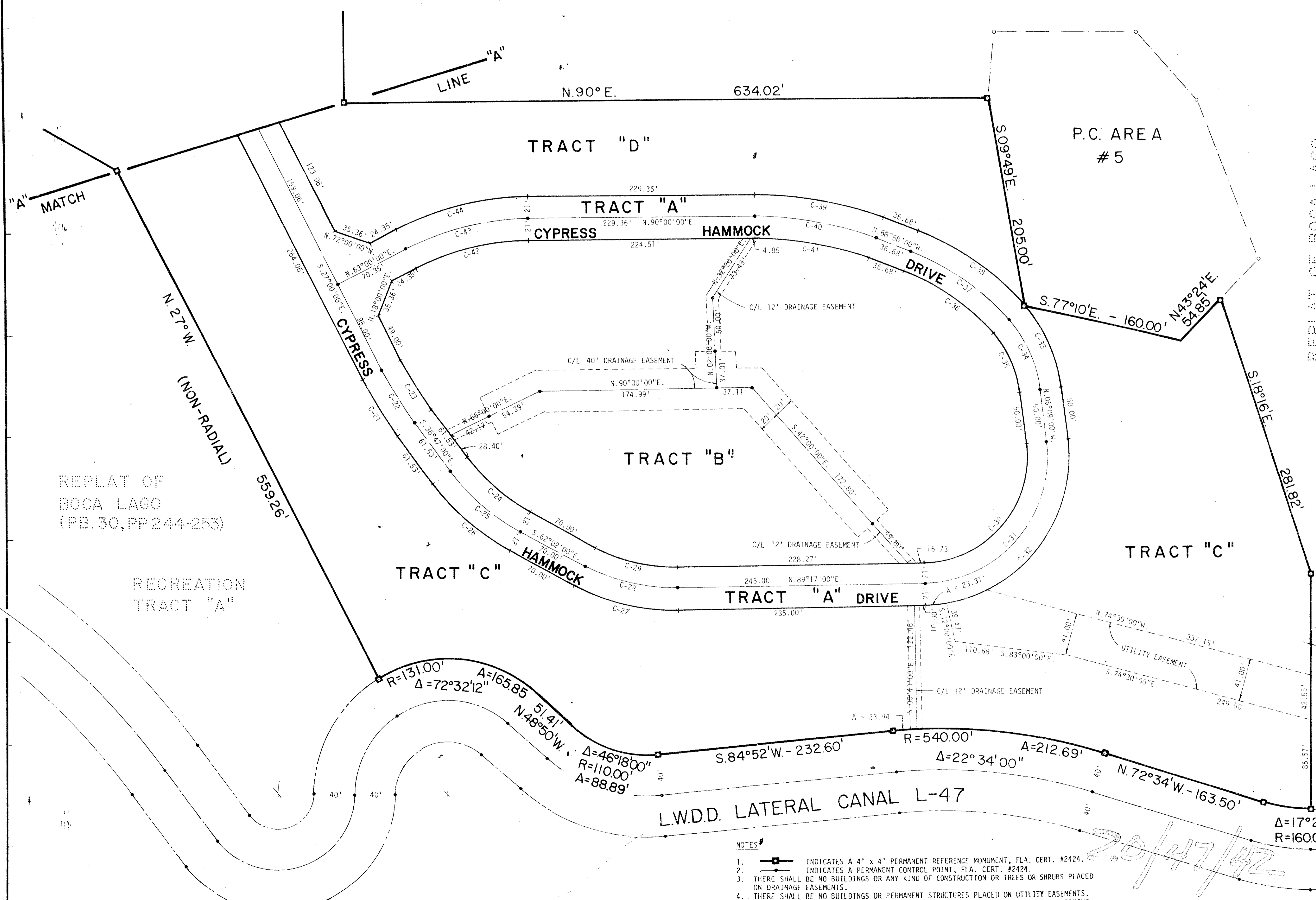


0' 50' 100'

STATE OF FLORIDA  
 COUNTY OF PALM BEACH  
 THIS PLAT WAS FILED FOR RECORD AT \_\_\_\_\_ M. THIS DAY OF \_\_\_\_\_ A.D., 1978 AND DULY RECORDED IN PLAT BOOK \_\_\_\_\_ ON PAGES \_\_\_\_\_ AND \_\_\_\_\_  
 JOHN B. DUNKLE, CLERK  
 CIRCUIT COURT  
 BY: \_\_\_\_\_ DC

REPLAT OF BOCA LAGO (PB 30, PP 244-253)

RECREATION TRACT "B"



REPLAT OF BOCA LAGO (PB 30, PP 244-253)  
 RECREATION TRACT "B"

C. NO.	CEN. ANG.	RADIUS	ARC	CHORD	TANGENT
C-1	09°47'00"	371.00'	63.44'	63.36'	31.00'
C-2	09°47'00"	330.53'	59.25'	59.28'	29.00'
C-3	09°47'00"	329.33'	56.27'	56.25'	28.29'
C-4	35°15'00"	194.37'	81.25'	80.60'	41.30'
C-25	25°15'00"	105.37'	90.51'	89.78'	46.00'
C-26	25°15'00"	226.37'	99.76'	98.96'	50.70'
C-27	28°41'00"	208.74'	104.50'	103.41'	53.37'
C-28	28°41'00"	167.74'	93.99'	93.01'	48.00'
C-29	28°41'00"	166.74'	93.47'	92.60'	47.63'
C-30	35°26'00"	161.77'	109.51'	109.58'	53.91'
C-31	35°26'00"	129.77'	104.54'	103.66'	53.00'
C-32	35°26'00"	143.77'	103.57'	102.75'	52.09'
C-33	35°37'00"	141.42'	90.46'	89.01'	46.75'
C-34	35°37'00"	124.52'	77.41'	76.17'	46.50'
C-35	35°37'00"	103.52'	64.35'	63.32'	33.25'
C-36	27°12'00"	227.01'	107.77'	106.76'	54.92'
C-37	27°12'00"	248.01'	117.74'	116.64'	60.00'
C-38	27°12'00"	269.01'	127.71'	126.51'	65.00'
C-39	21°32'00"	344.71'	176.36'	175.65'	83.90'
C-40	21°32'00"	323.71'	175.85'	174.94'	80.30'
C-41	21°32'00"	302.21'	170.94'	170.32'	86.13'
C-42	27°00'00"	243.74'	117.69'	116.60'	59.36'
C-43	27°00'00"	276.74'	127.59'	126.41'	65.00'
C-44	27°00'00"	291.74'	137.48'	136.21'	70.04'

LYONS ROAD

1000-089

54

**BENCH MARK**  
 land surveying and mapping, inc.

CONRAD W. SCHAEFER CONSULTING ENGINEERS, INC.  
 PALM BEACH COUNTY, FLORIDA

HOUSING TRACT NO. 1  
 AT BOCA LAGO

3/6/21

DESIGNED	DRAWN	CHECKED	DATE	SCALE	APPROVED	FILE NO.	PROJECT NO.

NOTES:

- INDICATES A 4" x 4" PERMANENT REFERENCE MONUMENT, FLA. CERT. #2424.
- INDICATES A PERMANENT CONTROL POINT, FLA. CERT. #2424.
- THERE SHALL BE NO BUILDINGS OR ANY KIND OF CONSTRUCTION OR TREES OR SHRUBS PLACED ON DRAINAGE EASEMENTS.
- THERE SHALL BE NO BUILDINGS OR PERMANENT STRUCTURES PLACED ON UTILITY EASEMENTS.
- BUILDING SET BACK LINES SHALL BE AS REQUIRED BY CURRENT PALM BEACH COUNTY ZONING REGULATIONS.
- THIS INSTRUMENT WAS PREPARED BY ROBERT J. WHIDDEN IN THE OFFICES OF BENCH MARK LAND SURVEYING AND MAPPING, INC., 2300 PALM BEACH LAKES BLVD., WEST PALM BEACH, FLORIDA 33409, PHONE NO. 689-2111.

*The Cypresses of Boca LAGO PUD*

20/47/42