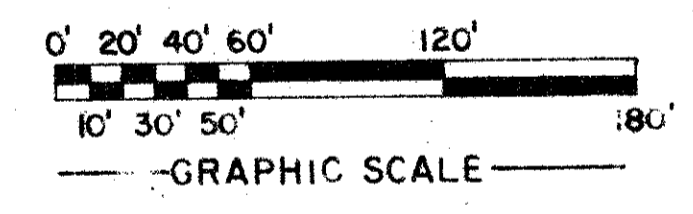
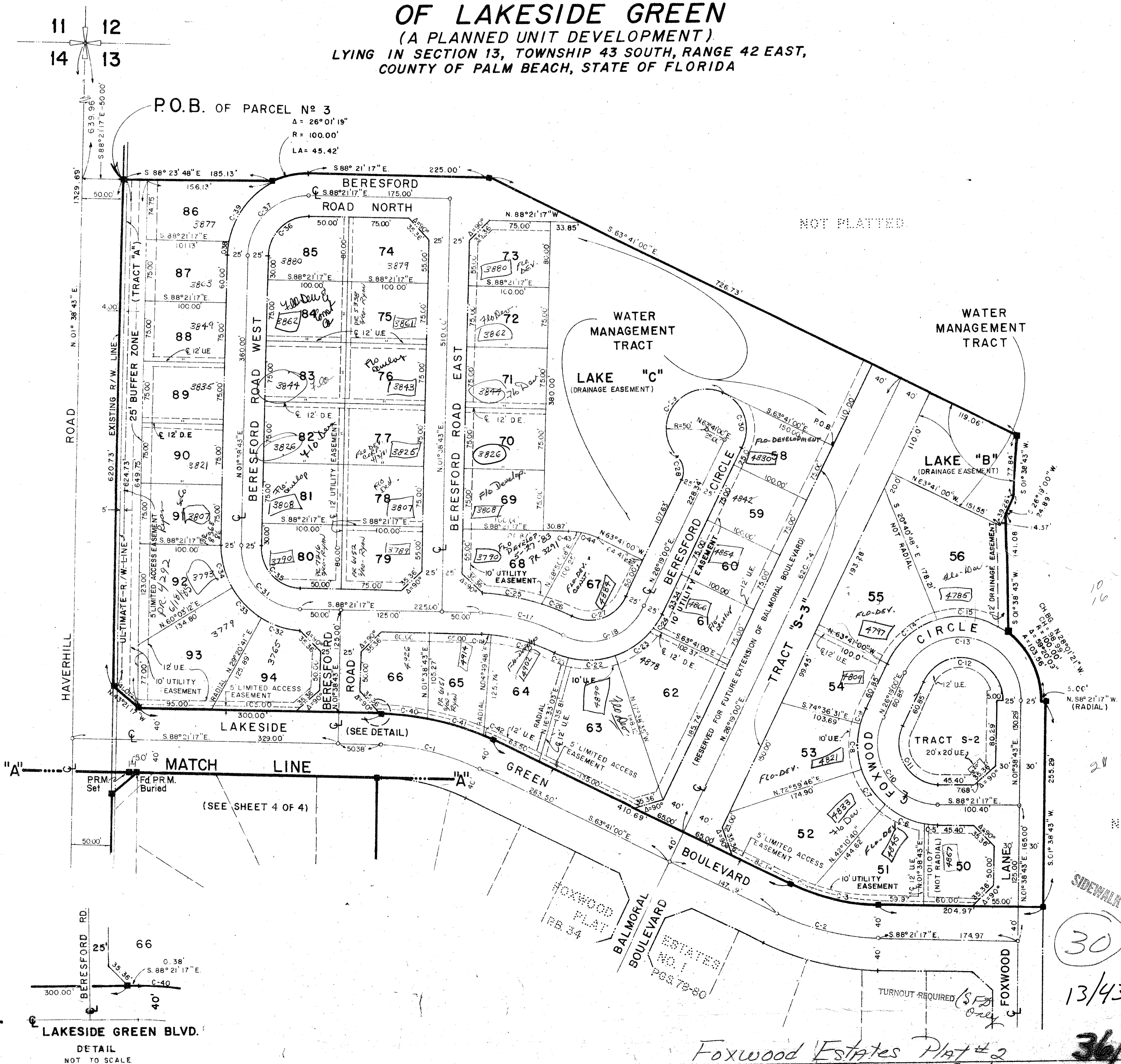


# FOXWOOD ESTATES PLAT NO. 2

## OF LAKESIDE GREEN

(A PLANNED UNIT DEVELOPMENT)  
 LYING IN SECTION 13, TOWNSHIP 43 SOUTH, RANGE 42 EAST,  
 COUNTY OF PALM BEACH, STATE OF FLORIDA

84



NOTE: SEE SHEET 4 OF 4 FOR CURVE DATA.

NOT PLATTED

0265-300

THIS INSTRUMENT WAS PREPARED BY JORGE PERDOMO IN THE OFFICES OF FLORIDA SURVEYING & MAPPING, INC., 941 NORTH MILITARY TRAIL, WEST PALM BEACH, FLORIDA, 33406.

SHEET 3 OF 4

| FLORIDA SURVEYING & MAPPING, INC. |           |         |         |
|-----------------------------------|-----------|---------|---------|
| REGISTERED LAND SURVEYORS         |           |         |         |
| WEST PALM BEACH, FLORIDA 33401    |           |         |         |
| SCALE                             | DATE      | BY      | DATE    |
| 1" = 60'                          | NOV, 1977 |         |         |
|                                   | BY ELO    | J.P.    |         |
|                                   | CHKD BY   | 2376/79 |         |
| FOXWOOD ESTATES Plat No 2         |           |         | 177-162 |

30  
 13/43/42  
 36/84

Foxwood Estates Plat #2  
 paid

DETAIL  
 NOT TO SCALE