

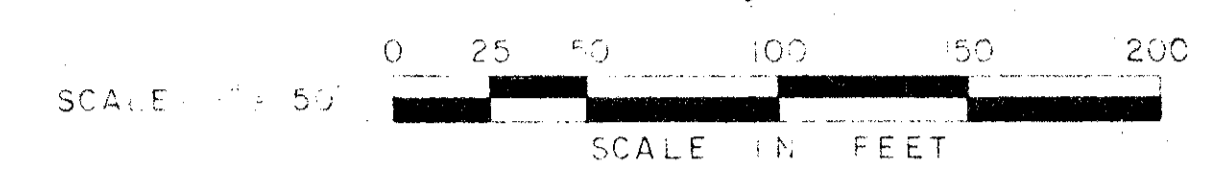
State Of Florida
County Of Palm Beach
This Plat Was Filed For
Record At _____ On The
_____ Day Of _____
1978 And Duly Recorded
In Plat Book _____ Page _____

John B. Dunkle
Clerk Of Circuit Court
By _____

VISTA VERDE SECTION ONE OF VIA VERDE P.U.D.

A PORTION OF SECTION 22, TWP. 47 S, RGE. 42 E.
PALM BEACH COUNTY, FLORIDA

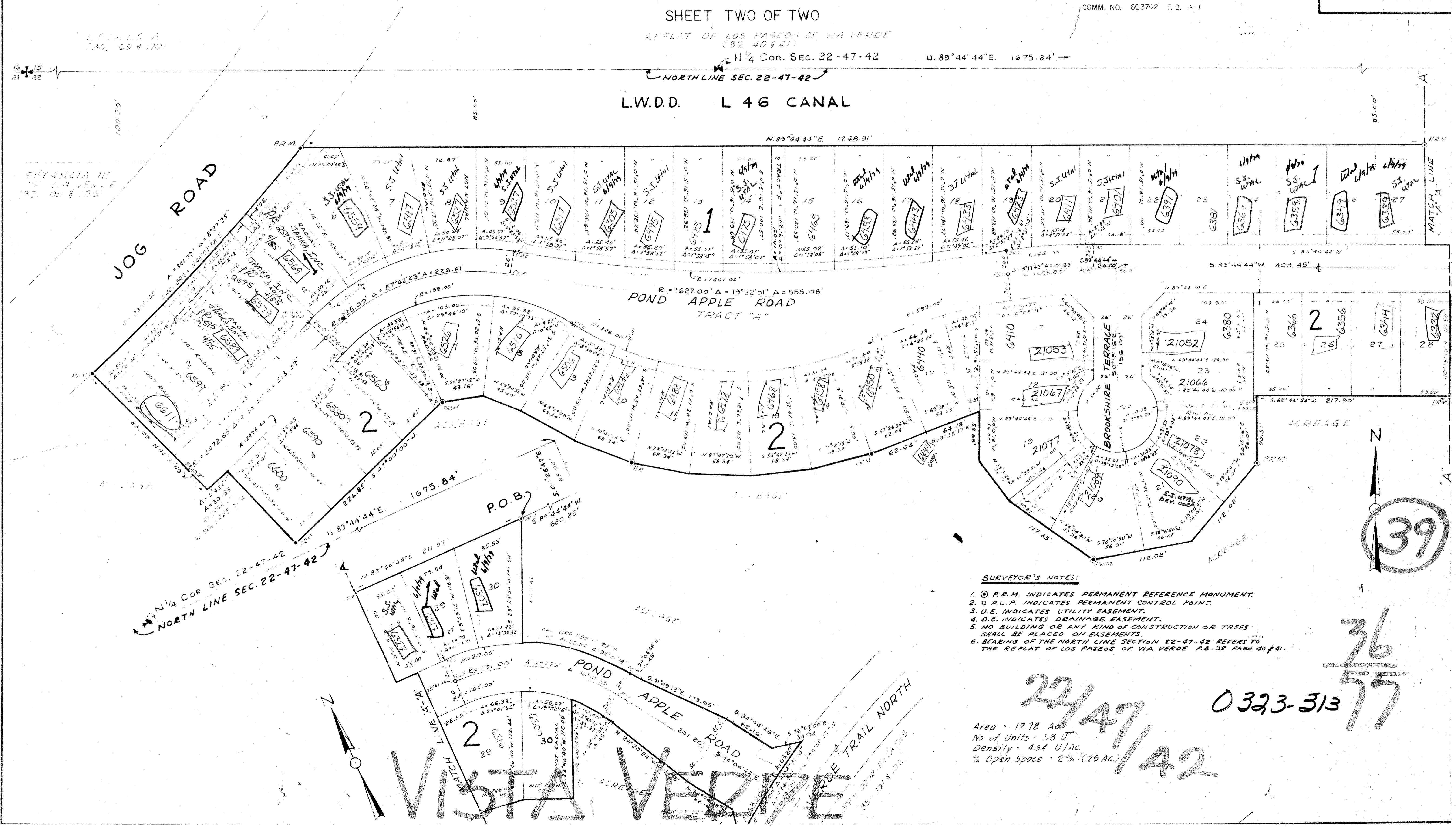
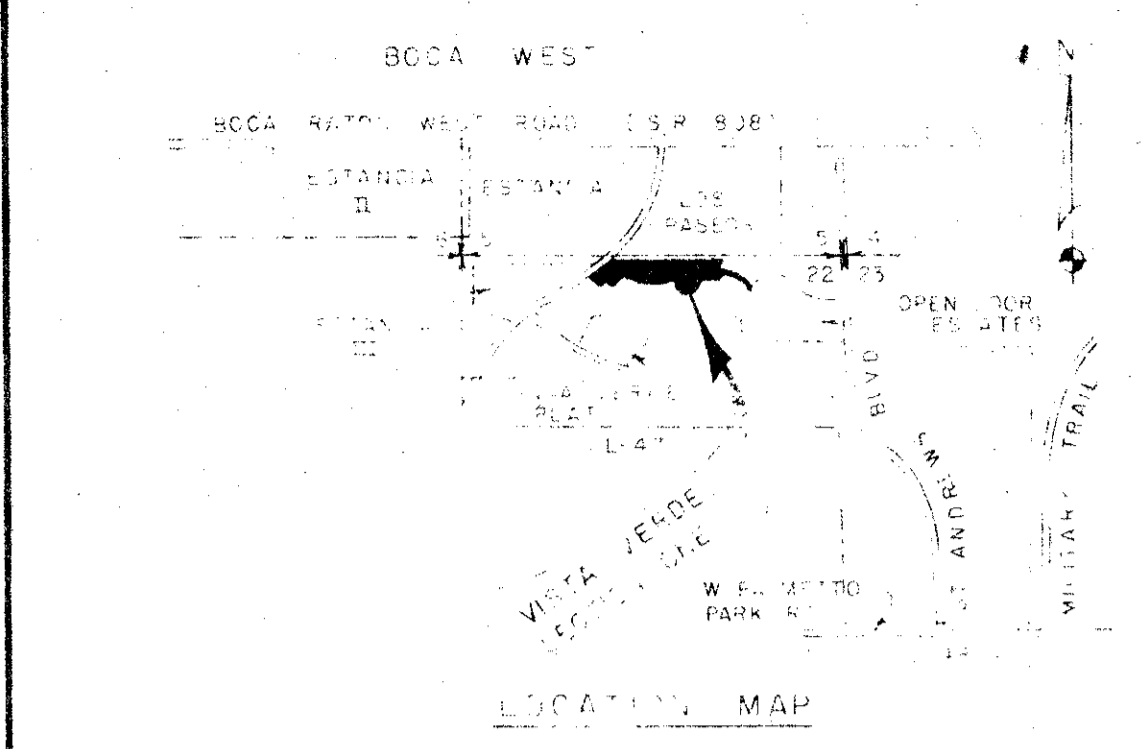
PREPARED BY: T.D. BICKHAM IN THE OFFICE OF
ARTHUR V. STROCK & ASSOCIATES, INC.
CONSULTING ENGINEERS - LAND SURVEYORS
DEERFIELD BEACH-DELRAY BEACH, FLORIDA
COMM. NO. 603702 F.B. A-1



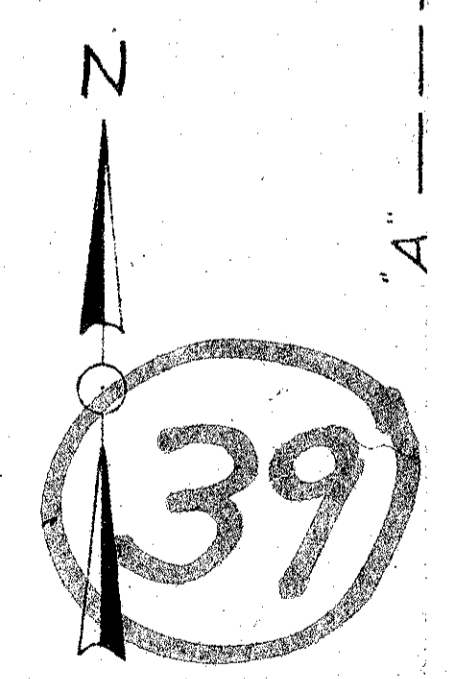
SHEET TWO OF TWO

REPLAT OF LOS PASEOS DE VIA VERDE
(32, 40 & 41)

N 1/4 COR. SEC. 22-47-42 N. 89°44'44"E. 1675.84'
NORTH LINE SEC. 22-47-42
L.W.D.D. L 46 CANAL



- SURVEYOR'S NOTES:**
1. P.R.M. INDICATES PERMANENT REFERENCE MONUMENT.
 2. P.C.P. INDICATES PERMANENT CONTROL POINT.
 3. U.E. INDICATES UTILITY EASEMENT.
 4. D.E. INDICATES DRAINAGE EASEMENT.
 5. NO BUILDING OR ANY KIND OF CONSTRUCTION OR TREES SHALL BE PLACED ON EASEMENTS.
 6. BEARING OF THE NORTH LINE SECTION 22-47-42 REFERS TO THE REPLAT OF LOS PASEOS DE VIA VERDE P.B. 32 PAGE 40 & 41.



Area = 12.78 Ac
No of Units = 58 U
Density = 4.54 U/AC
% Open Space = 2% (25 AC)

22/47
0323-313
77
36
77

VISTA VERDE