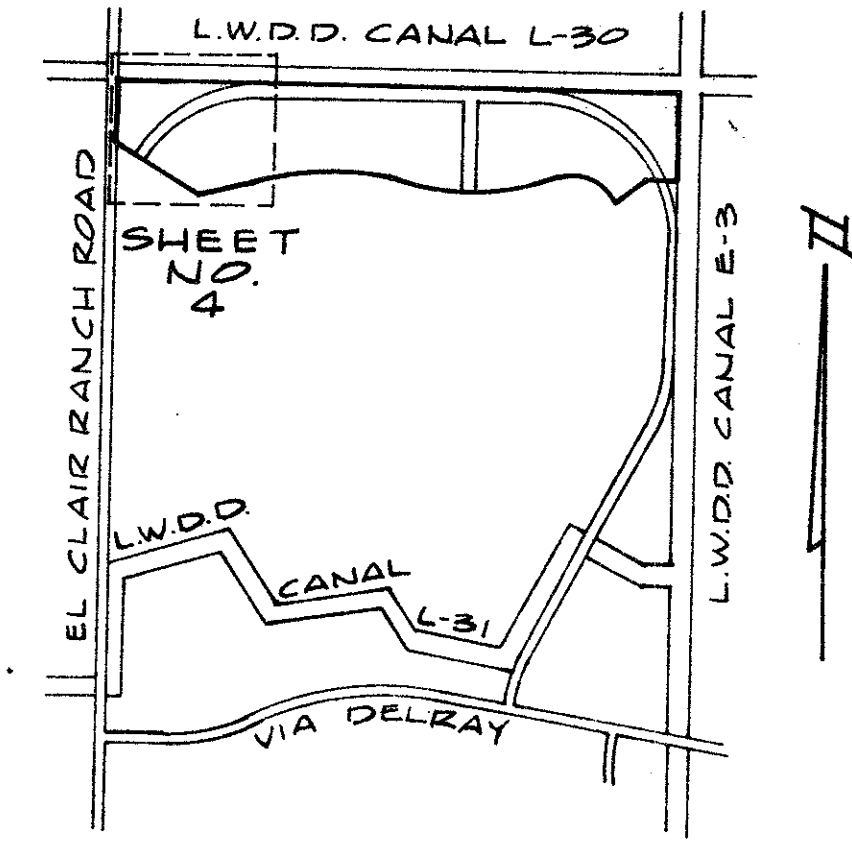
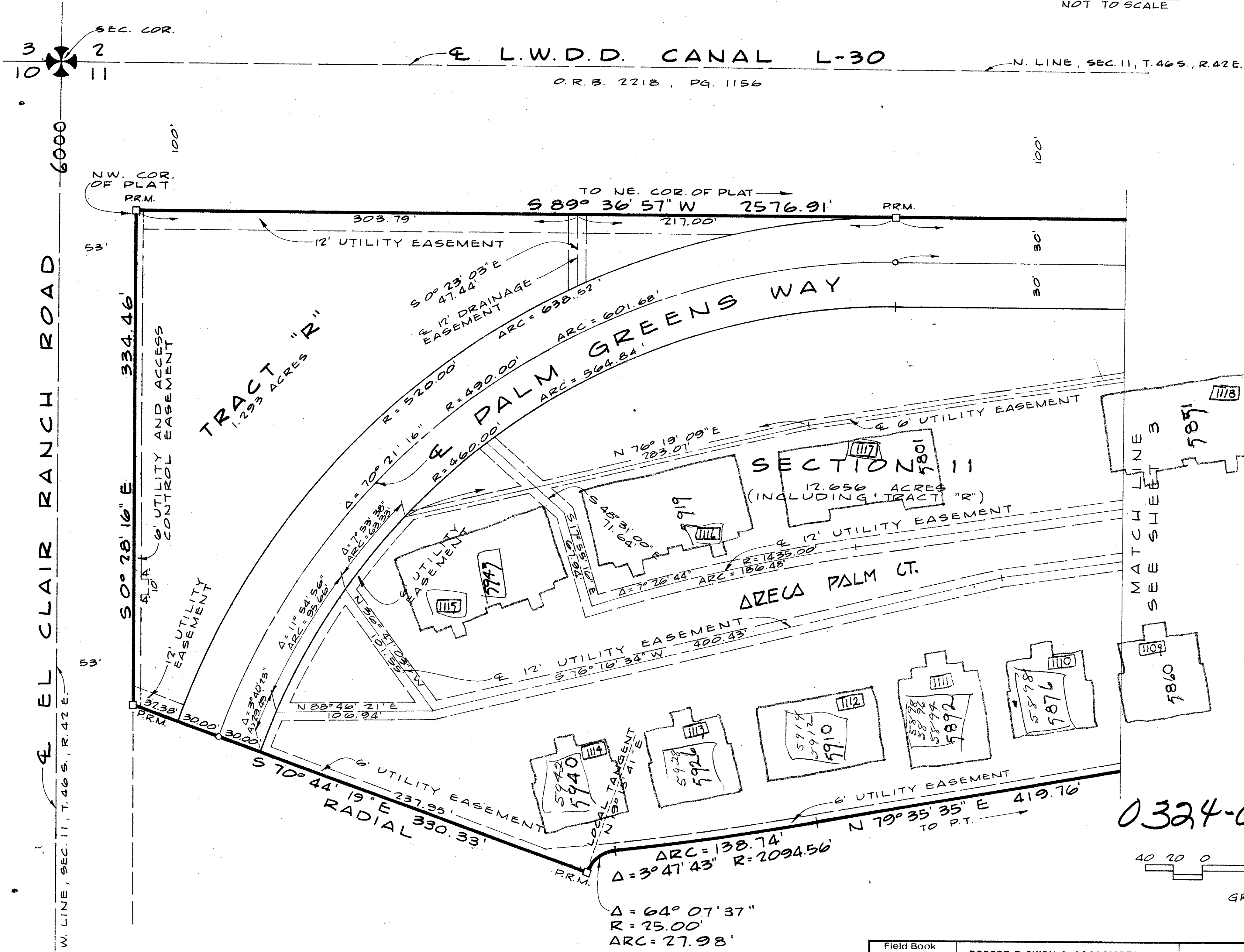


A PLANNED UNIT DEVELOPMENT
VILLADELRAY - SECTION 10 AND 11
 PALM BEACH COUNTY, FLORIDA
 IN 4 SHEETS - SHEET NO. 4

22



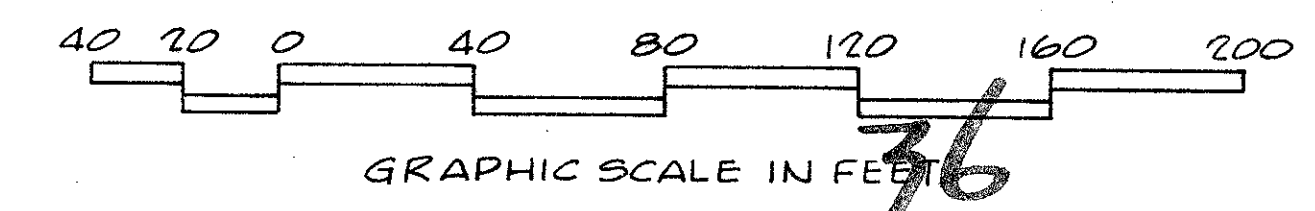
KEY MAP
NOT TO SCALE



MERIDIAN OF VILLADELRAY SECTION 10, 11 AND 9 P.B. 34, P.P. 175, 174 AND 175

0324-005

36



VILLADELRAY

10 + 11

Field Book No. Pg.	ROBERT E. OWEN & ASSOCIATES, INC.	Job No. 78-1041
Design J.C. YESTE	ENGINEERS - PLANNERS - SURVEYORS	Scale 1" = 40'
Drawn E.M. SKOR	WEST PALM BEACH FLORIDA	Date SEPT., 1978
Checked		Sheet 4
		of 4
		File 85-22

A PLANNED UNIT DEVELOPMENT
VILLADELRAY SECTION 10 AND 11
 PALM BEACH COUNTY, FLORIDA
 IN 4 SHEETS - SHEET NO. 4