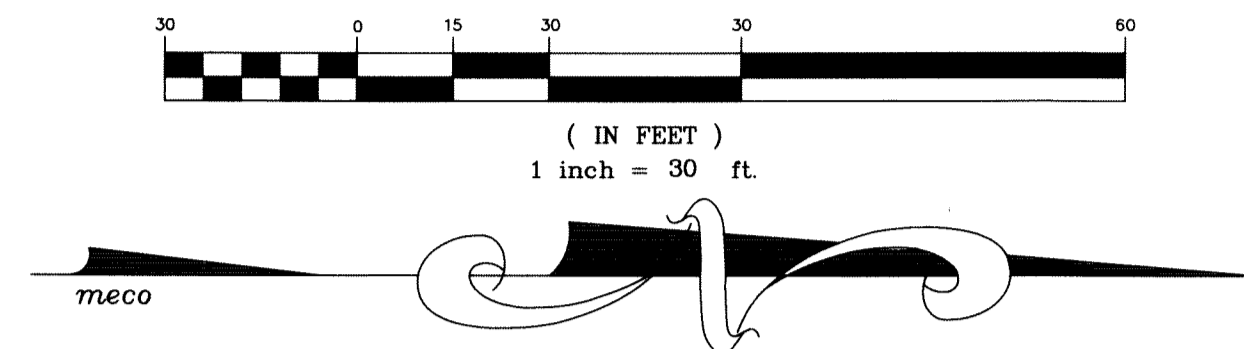


This instrument was prepared by  
**McLAUGHLIN ENGINEERING COMPANY**  
 1700 N.W. 64th Street, Suite 400  
 Fort Lauderdale, Florida 33309  
 Certificate of Authorization  
 Number: LB 285

# "CASA DEL SOL"

**A REPLAT OF A PORTION OF THE EAST ONE-HALF (E 1/2) OF LOT 5, BLOCK 1,  
 PLAT NO. 1 PALM BEACH PLANTATIONS MODEL LAND COMPANY SUBDIVISION  
 (PLAT BOOK 10, PAGE 20, PALM BEACH COUNTY RECORDS)  
 IN SECTION 1, TOWNSHIP 44 SOUTH, RANGE 42 EAST,  
 PALM BEACH COUNTY, FLORIDA  
 SHEET 2 OF 2 SHEETS**

ZONING CONTROL # 2003-00037  
 GRAPHIC SCALE



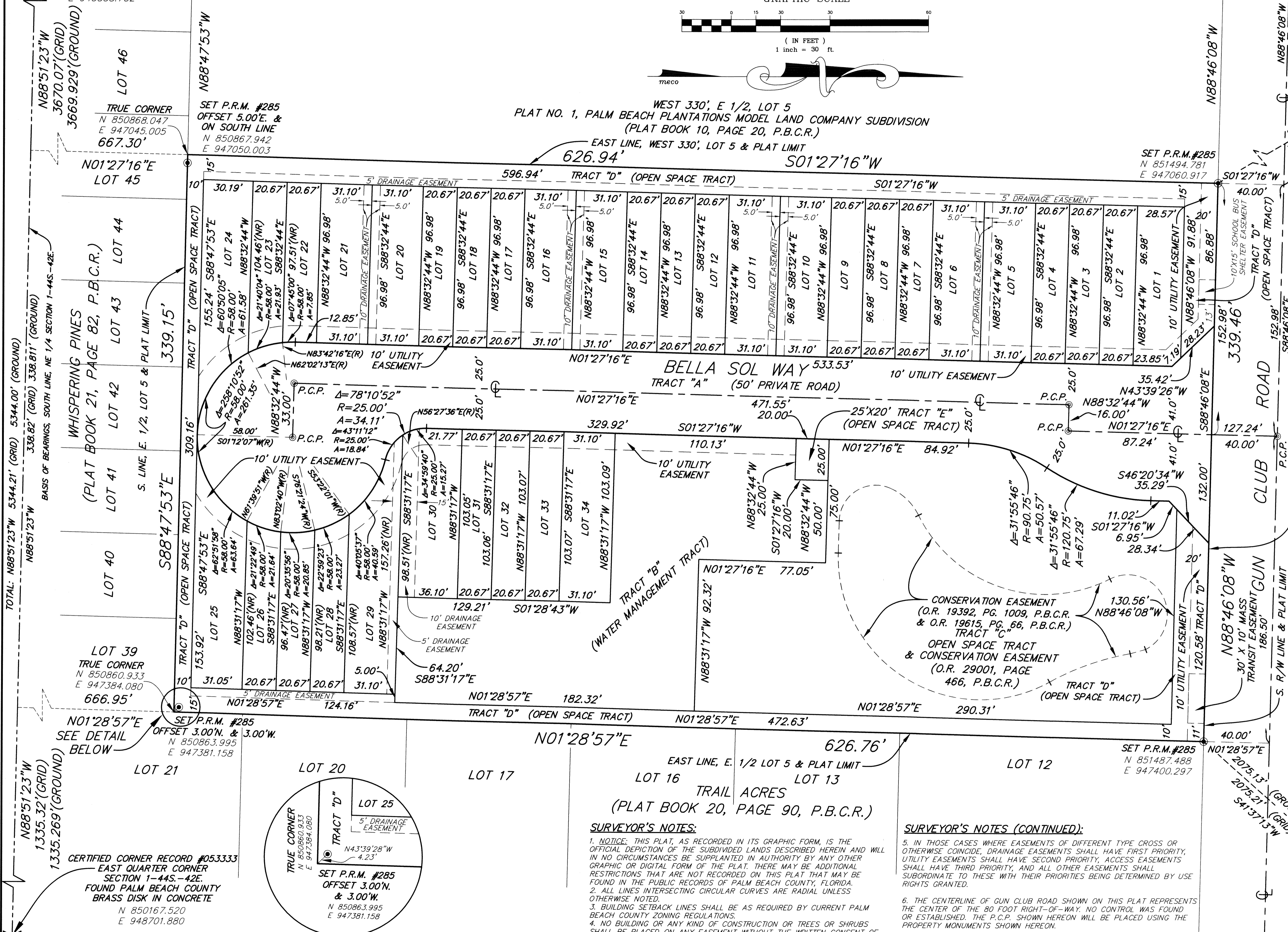
WEST 330', E 1/2, LOT 5  
 PLAT NO. 1, PALM BEACH PLANTATIONS MODEL LAND COMPANY SUBDIVISION  
 (PLAT BOOK 10, PAGE 20, P.B.C.R.)

**CERTIFIED CORNER RECORD #053335**  
 WEST QUARTER CORNER  
 SECTION 1-44S-42E.  
 FOUND PALM BEACH COUNTY  
 BRASS DISK IN CONCRETE  
 N 850274.187  
 E 943358.732

**TRUE CORNER**  
 N 850868.047  
 E 947045.005  
 667.30'

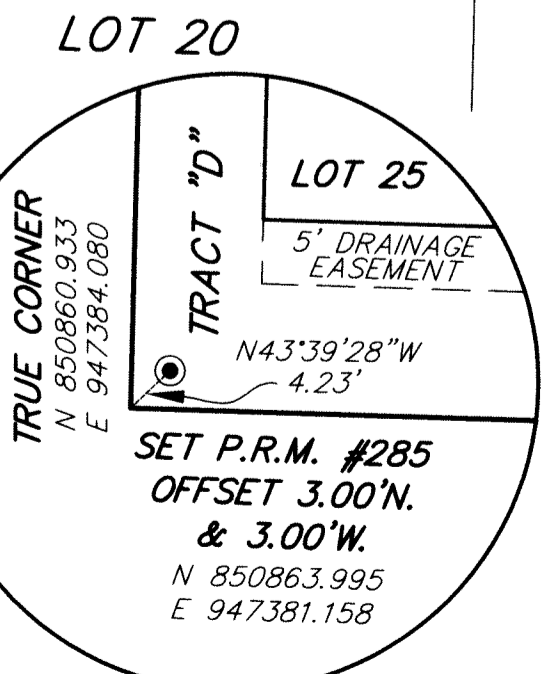
**SET P.R.M. #285**  
 OFFSET 5.00'E. &  
 ON SOUTH LINE  
 N 850867.942  
 E 947050.003

**SET P.R.M. #285**  
 N 851494.781  
 E 947060.917



TOTAL: N88°51'23"W 5344.21' (GRID) 5344.00' (GROUND)  
 N88°51'23"W 338.82' (GRID) 338.811' (GROUND)  
 BASIS OF BEARINGS, SOUTH LINE, NE 1/4 SECTION 1-44S-42E

**CERTIFIED CORNER RECORD #053333**  
 EAST QUARTER CORNER  
 SECTION 1-44S-42E.  
 FOUND PALM BEACH COUNTY  
 BRASS DISK IN CONCRETE  
 N 850167.520  
 E 948701.880



**SURVEYOR'S NOTES:**  
 1. NOTICE: THIS PLAT, AS RECORDED IN ITS GRAPHIC FORM, IS THE OFFICIAL DEPICTION OF THE SUBDIVIDED LANDS DESCRIBED HEREIN AND WILL IN NO CIRCUMSTANCES BE SUPPLANTED IN AUTHORITY BY ANY OTHER GRAPHIC OR DIGITAL FORM OF THE PLAT. THERE MAY BE ADDITIONAL RESTRICTIONS THAT ARE NOT RECORDED ON THIS PLAT THAT MAY BE FOUND IN THE PUBLIC RECORDS OF PALM BEACH COUNTY, FLORIDA.  
 2. ALL LINES INTERSECTING CIRCULAR CURVES ARE RADIAL UNLESS OTHERWISE NOTED.  
 3. BUILDING SETBACK LINES SHALL BE AS REQUIRED BY CURRENT PALM BEACH COUNTY ZONING REGULATIONS.  
 4. NO BUILDING OR ANY KIND OF CONSTRUCTION OR TREES OR SHRUBS SHALL BE PLACED ON ANY EASEMENT WITHOUT THE WRITTEN CONSENT OF ALL EASEMENT BENEFICIARIES AND ALL APPLICABLE COUNTY APPROVALS OR PERMITS AS REQUIRED FOR SUCH ENCROACHMENTS.

**SURVEYOR'S NOTES (CONTINUED):**  
 5. IN THOSE CASES WHERE EASEMENTS OF DIFFERENT TYPE CROSS OR OTHERWISE COINCIDE, DRAINAGE EASEMENTS SHALL HAVE FIRST PRIORITY, UTILITY EASEMENTS SHALL HAVE SECOND PRIORITY, ACCESS EASEMENTS SHALL HAVE THIRD PRIORITY, AND ALL OTHER EASEMENTS SHALL SUBORDINATE TO THESE WITH THEIR PRIORITIES BEING DETERMINED BY USE RIGHTS GRANTED.  
 6. THE CENTERLINE OF GUN CLUB ROAD SHOWN ON THIS PLAT REPRESENTS THE CENTER OF THE 80 FOOT RIGHT-OF-WAY. NO CONTROL WAS FOUND OR ESTABLISHED. THE P.C.P. SHOWN HEREON WILL BE PLACED USING THE PROPERTY MONUMENTS SHOWN HEREON.

50' RIGHT-OF-WAY  
 (P.B. 24, PG. 189, P.B.C.R.)

WEST BROWNING DRIVE

LOT 86  
 LOT 85

**CONTROL STATION "CONTROL S-1"**  
 PALM BEACH COUNTY POSITION  
 (NOT LOCATED)  
 N 852983.543  
 E 946177.619

**STATE PLANE COORDINATES:**  
 COORDINATES SHOWN ARE GRID.  
 DATUM = NAD 83, 1990 ADJUSTMENT.  
 ZONE = FLORIDA EAST.  
 LINEAR UNITS = U.S. SURVEY FOOT.  
 COORDINATES SYSTEM = 1983 STATE PLANE PROJECTION = TRANSVERSE MERCATOR  
 ALL DISTANCES ARE GROUND UNLESS OTHERWISE NOTED.  
 SCALE FACTOR = 1.00003843  
 GROUND DISTANCE X SCALE FACTOR = GRID DISTANCE.  
 BEARINGS SHOWN ARE GRID BEARINGS AND ASSUME THE SOUTH LINE OF THE NE 1/4 OF SECTION 1-44S-42E. AS NORTH 88°51'23" WEST.

**LEGEND:**  
 P.R.M. - INDICATES PERMANENT REFERENCE MONUMENT (4"X4"X24" CONCRETE POST W/METAL ROD AND BRASS CAP STAMPED L.B. 285)  
 P.C.P. - INDICATES PERMANENT CONTROL POINT - McLAUGHLIN (MCL) NAIL WITH CAP #285  
 L.B. - INDICATES LICENSED BUSINESS NUMBER  
 P.B., PG. - INDICATES PLAT BOOK & PAGE  
 P.B.C.R. - INDICATES PALM BEACH COUNTY RECORDS  
 SQ. FT. - INDICATES SQUARE FEET  
 (NR) - INDICATES NOT RADIAL  
 (R) - INDICATES RADIAL  
 O.R., PG. - INDICATES OFFICIAL RECORDS BOOK, PAGE  
 R/W - INDICATES RIGHT-OF-WAY  
 N100000 - INDICATES STATE PLANE COORDINATE NORTHING  
 E100000 - INDICATES STATE PLANE COORDINATE EASTING  
 CL - INDICATES CENTERLINE  
 F.S. - INDICATES FLORIDA STATUTES  
 R - INDICATES RADIUS  
 Δ - INDICATES CENTRAL ANGLE (DELTA)  
 A - INDICATES ARC LENGTH

LOT 84  
 LOT 83  
 LOT 82  
 LOT 81  
 LOT 80  
 LOT 79  
 LOT 78  
 LOT 77

**CONTROL STATION "MF-41"**  
 PALM BEACH COUNTY POSITION  
 (NOT LOCATED)  
 N 853038.840  
 E 948778.632

53