

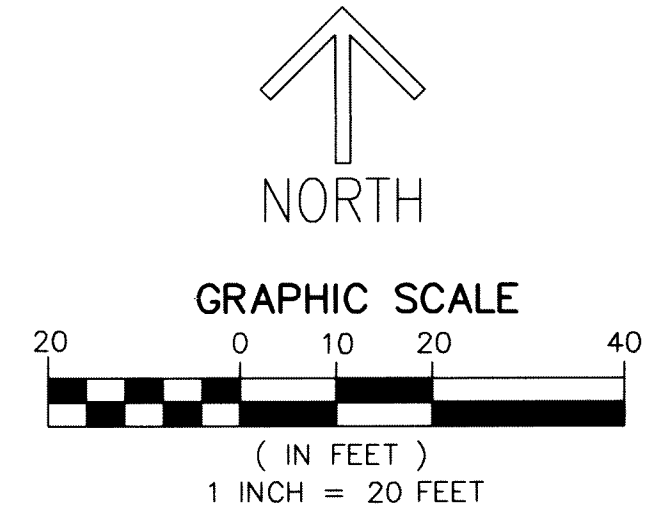
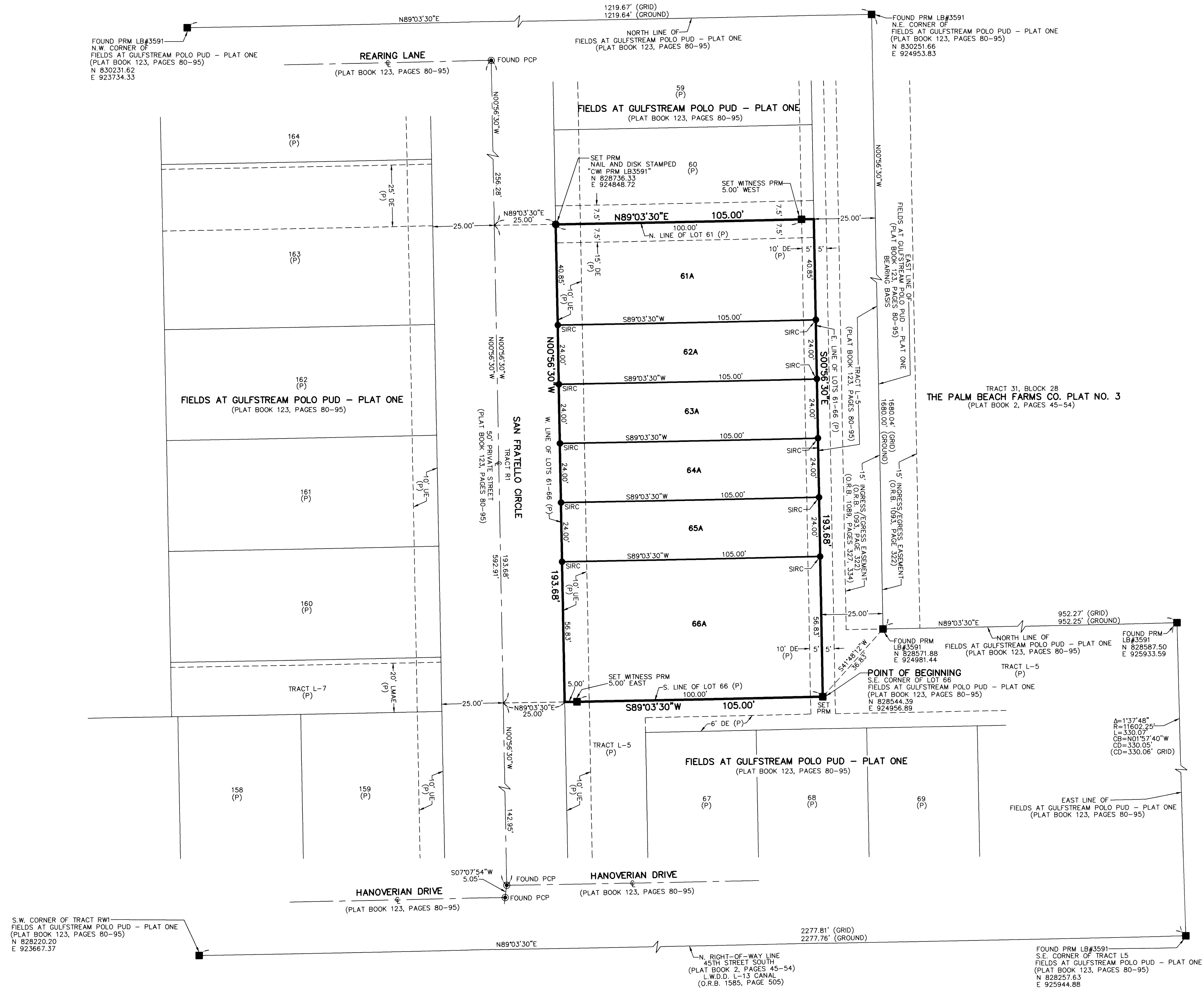
THIS INSTRUMENT PREPARED BY
 DAVID P. LINDLEY
 OF
CAULFIELD and WHEELER, INC.
 SURVEYORS - ENGINEERS - PLANNERS
 7900 GLADES ROAD, SUITE 100
 BOCA RATON, FLORIDA 33434 - (561)392-1991
 CERTIFICATE OF AUTHORIZATION NO. LB3591

FIELDS AT GULFSTREAM POLO PUD - PLAT FIVE

A PLANNED UNIT DEVELOPMENT
 BEING A REPLAT OF LOTS 61 THROUGH 66, FIELDS AT GULFSTREAM POLO PUD - PLAT ONE,
 AS RECORDED IN PLAT BOOK 123, PAGES 80 THROUGH 95 OF THE PUBLIC RECORDS OF PALM BEACH COUNTY, FLORIDA,
 LYING IN SECTION 29, TOWNSHIP 44 SOUTH, RANGE 42 EAST, PALM BEACH COUNTY, FLORIDA

51

SHEET 2 OF 2



NOTES
COORDINATES, BEARINGS AND DISTANCES
 COORDINATES SHOWN ARE GRID
 DATUM = NAD 83 (90 ADJUSTMENT)
 ZONE = FLORIDA EAST
 LINEAR UNIT = US SURVEY FEET
 COORDINATE SYSTEM 1983 STATE PLANE
 TRANSVERSE MERCATOR PROJECTION
 ALL DISTANCES ARE GROUND, UNLESS OTHERWISE NOTED
 SCALE FACTOR = 1.0000236
 GROUND DISTANCE X SCALE FACTOR = GRID DISTANCE
 BEARINGS AS SHOWN HEREON ARE GRID DATUM,
 NAD 83 (90 ADJUSTMENT), FLORIDA EAST ZONE.

LEGEND/ABBREVIATIONS
 C - CENTERLINE
 Δ - DELTA (CENTRAL ANGLE)
 CB - CHORD BEARING
 CD - CHORD DISTANCE
 E - EASTING (WHEN USED WITH COORDINATES)
 L - ARC LENGTH
 LB - LICENSED BUSINESS
 LMAE - LAKE MAINTENANCE ACCESS EASEMENT
 L.W.D.D. - LAKE WORTH DRAINAGE DISTRICT
 N - NORTHING (WHEN USED WITH COORDINATES)
 O.R.B. - OFFICIAL RECORD BOOK
 PUD - PLANNED UNIT DEVELOPMENT
 R - RADIUS
 UE - UTILITY EASEMENT
 PRM - DENOTES PERMANENT REFERENCE MONUMENT
 4" x 4" x 24" CONCRETE MONUMENT WITH
 ALUMINUM DISK STAMPED "C&W PRM LB3591"
 ● - DENOTES PERMANENT CONTROL POINT
 NAIL AND METAL DISK STAMPED "PCP LB3591"
 ● - DENOTES SET 5/8" IRON ROD WITH CAP
 STAMPED "C&W PRM LB3591"
 (P) - FIELDS AT GULFSTREAM POLO PUD - PLAT ONE
 (PLAT BOOK 123, PAGES 80-95)