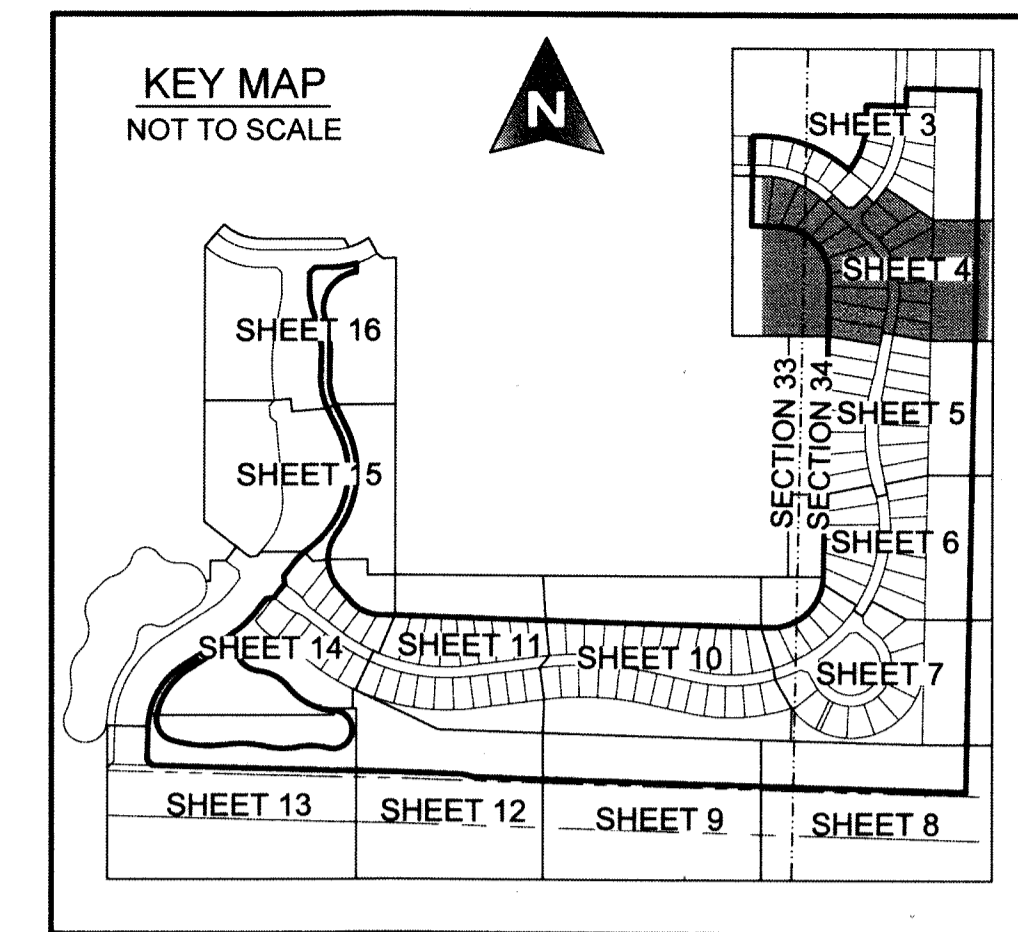
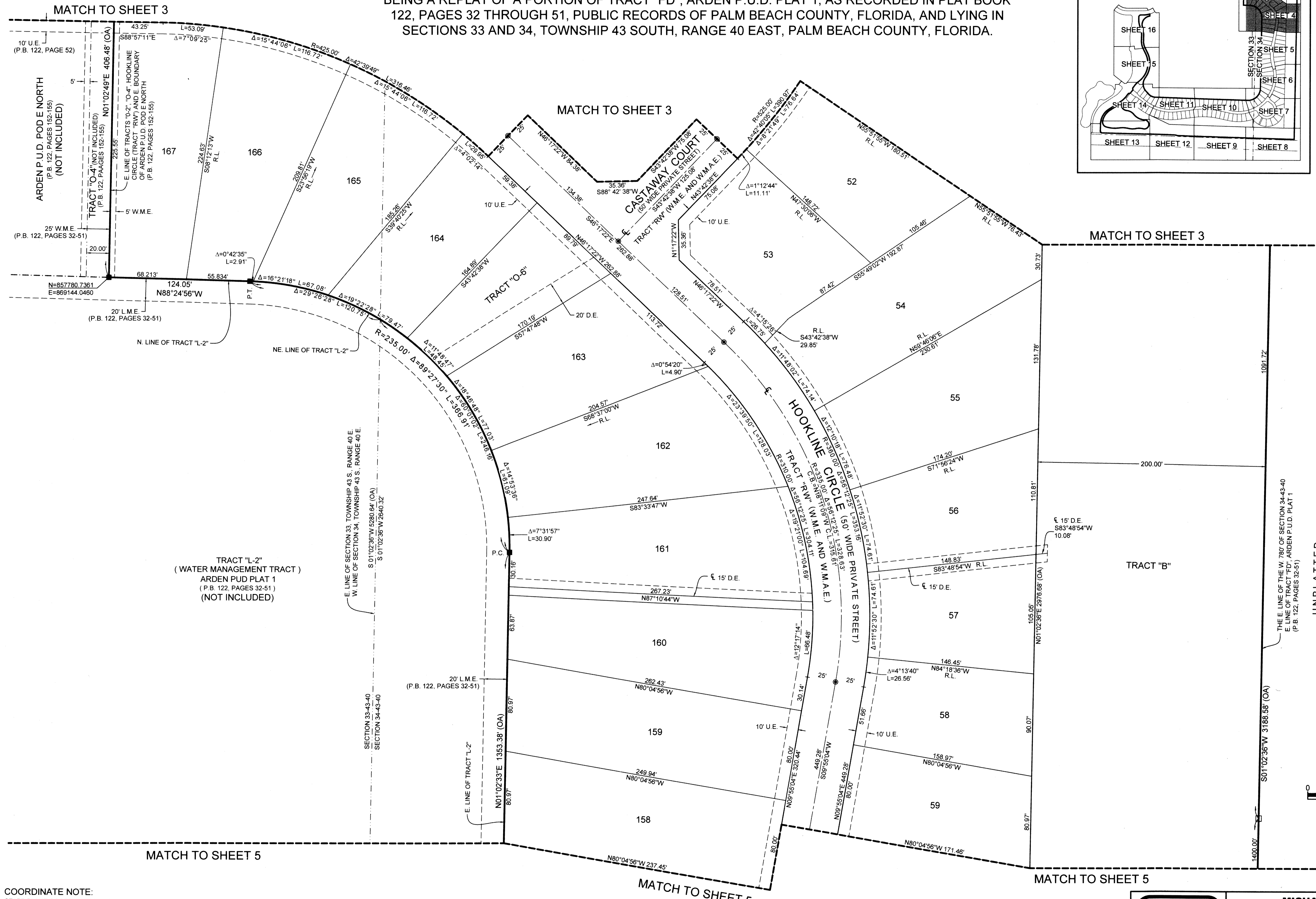


ARDEN P.U.D. POD E SOUTH

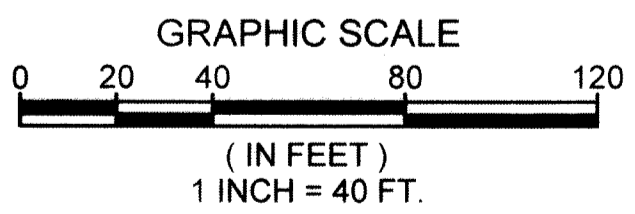
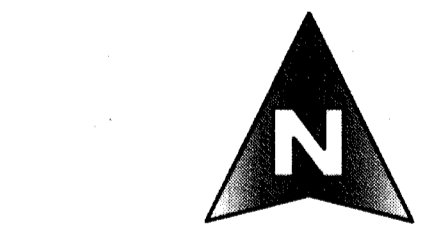
BEING A REPLAT OF A PORTION OF TRACT "FD", ARDEN P.U.D. PLAT 1, AS RECORDED IN PLAT BOOK 122, PAGES 32 THROUGH 51, PUBLIC RECORDS OF PALM BEACH COUNTY, FLORIDA, AND LYING IN SECTIONS 33 AND 34, TOWNSHIP 43 SOUTH, RANGE 40 EAST, PALM BEACH COUNTY, FLORIDA.



35



UNPLATTED



COORDINATE NOTE:
 STATE PLANE COORDINATES SHOWN ARE GRID DATUM, NAD 83 1990
 ADJUSTMENT, FLORIDA EAST ZONE, COORDINATE SYSTEM 1983 STATE
 PLANE, TRANSVERSE MERCATOR PROJECTION
 LINEAR UNIT = US SURVEY FEET
 ALL DISTANCES ARE GROUND
 SCALE FACTOR = 0.99999219
 GROUND DISTANCE X SCALE FACTOR = GRID DISTANCE
 BEARINGS AS SHOWN HEREON ARE GRID DATUM, NAD 83 1990
 ADJUSTMENT, FLORIDA EAST ZONE.



MICHAEL B. SCHORAH & ASSOCIATES, INC.
 1850 FOREST HILL BLVD., SUITE 206
 WEST PALM BEACH, FLORIDA 33406
 EB# 2438 TEL. (561) 968-0080 FAX. (561) 642-9726 LB# 2438

ARDEN P.U.D. POD E SOUTH