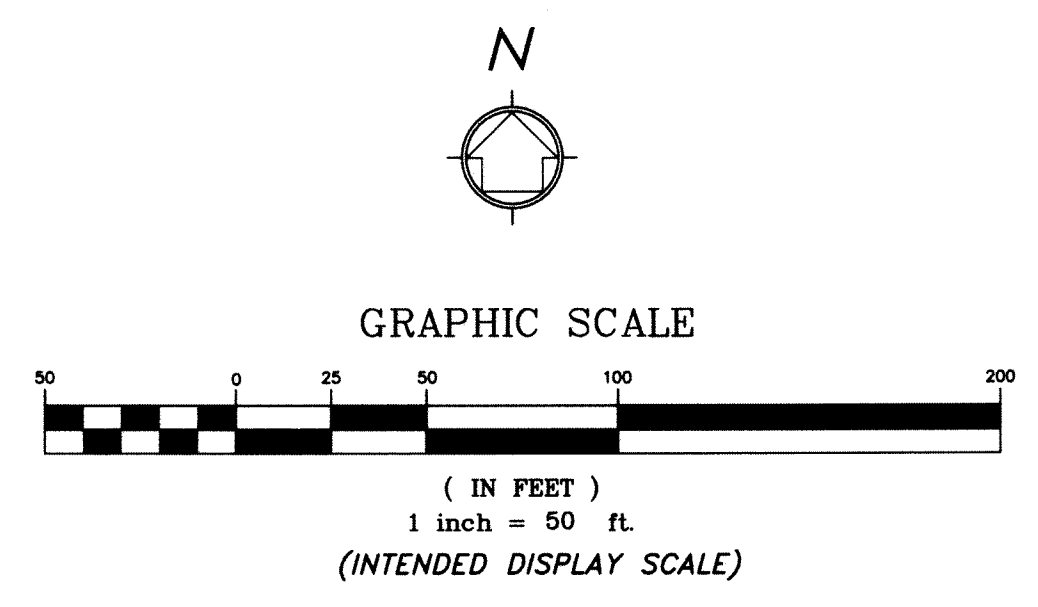
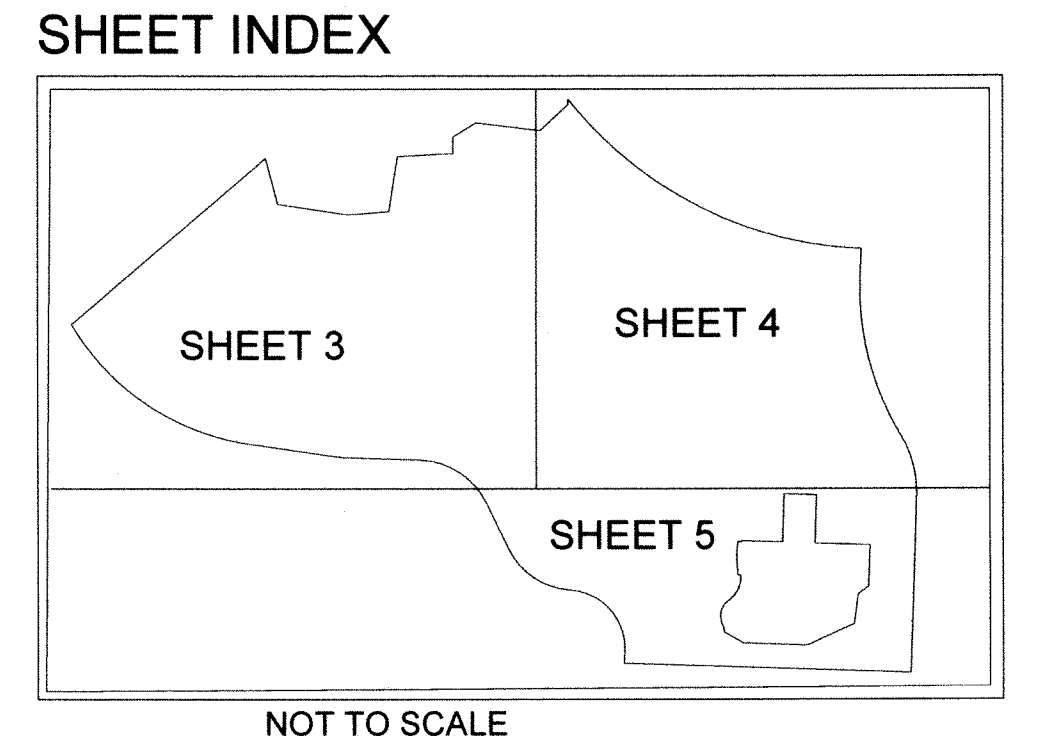
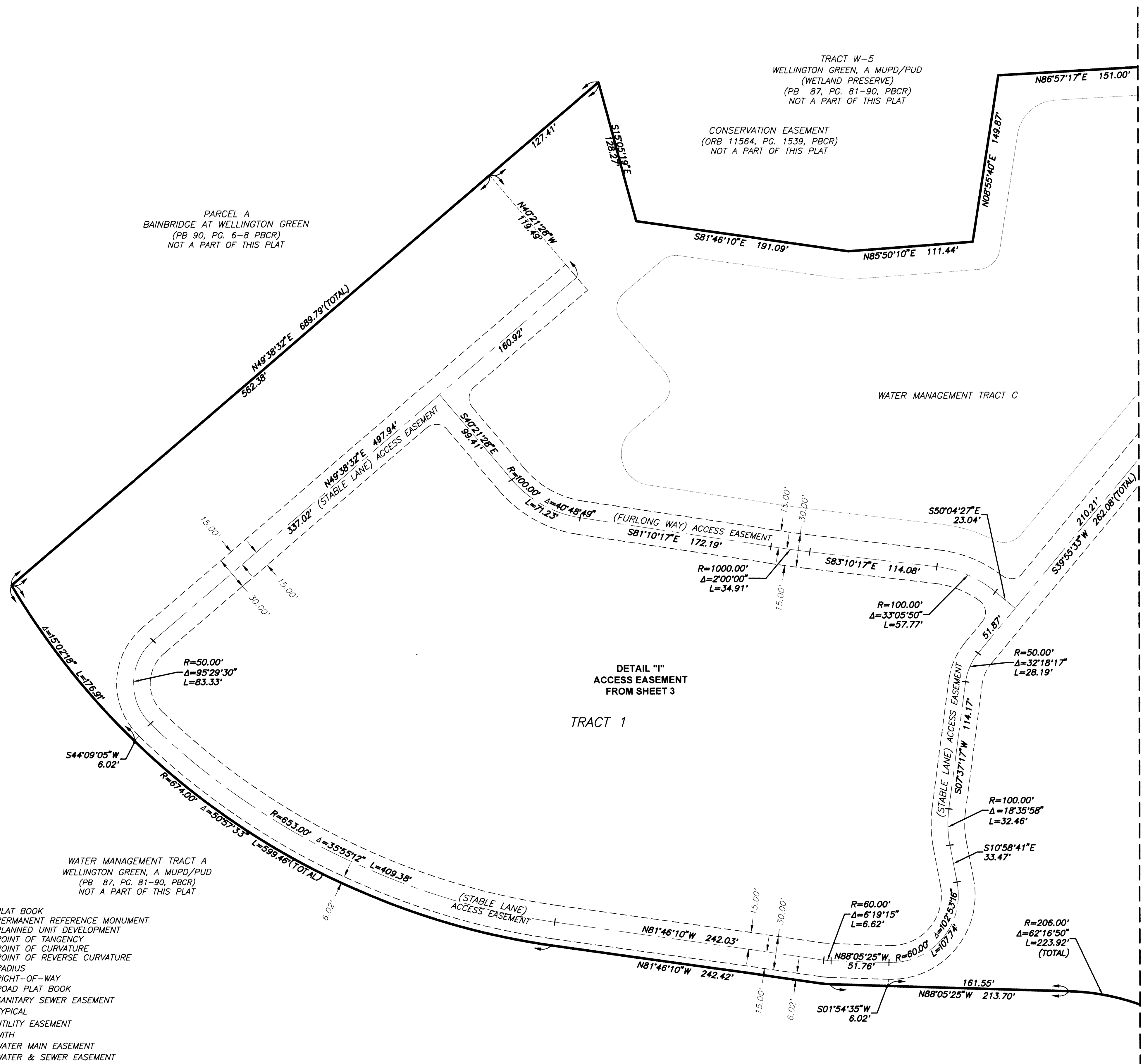


WELLINGTON GREEN, A MUPD/PUD, RE-PLAT NO. 4

BEING A REPLAT OF A PORTION OF WELLINGTON GREEN, A MUPD/PUD, A REPLAT OF A PORTION OF PARCEL 1, PLAT BOOK 112, PAGES 126 THROUGH 129 INCLUSIVE, PUBLIC RECORDS OF PALM BEACH COUNTY, FLORIDA, AND ALL OF WELLINGTON GREEN, A MUPD/PUD, RE-PLAT NO. 3, PLAT BOOK 112, PAGES 173 THROUGH 176 INCLUSIVE, PUBLIC RECORDS OF PALM BEACH COUNTY, FLORIDA. LYING IN SECTION 13, TOWNSHIP 44 SOUTH, RANGE 41 EAST, VILLAGE OF WELLINGTON, PALM BEACH COUNTY, FLORIDA.

12



- LEGEND**
- | | | | |
|--------|------------------------------------|--------|---|
| CL | = CENTER LINE | PB | = PLAT BOOK |
| CCR | = CERTIFIED CORNER RECORD | PRM | = PERMANENT REFERENCE MONUMENT |
| CONC. | = CONCRETE | PUD | = PLANNED UNIT DEVELOPMENT |
| CMON | = CONCRETE MONUMENT | PT | = POINT OF TANGENCY |
| CB | = CORD BEARING | PC | = POINT OF CURVATURE |
| CD | = CORD DISTANCE | PRC | = POINT OF REVERSE CURVATURE |
| Δ | = DELTA (CENTRAL ANGLE) | R | = RADIUS |
| DE | = DRAINAGE EASEMENT | R/W | = RIGHT-OF-WAY |
| FPL | = FLORIDA POWER & LIGHT | RPB | = ROAD PLAT BOOK |
| FND. | = FOUND | SSE | = SANITARY SEWER EASEMENT |
| LMAE | = LAKE MAINTENANCE ACCESS EASEMENT | (TYP.) | = TYPICAL |
| L.M.E. | = LAKE MAINTENANCE EASEMENT | UE | = UTILITY EASEMENT |
| L | = LENGTH OF ARC | W/ | = WITH |
| LB | = LICENSED BUSINESS | WME | = WATER MAIN EASEMENT |
| MUPD | = MULTIPLE USE PLANNED DEVELOPMENT | WSE | = WATER & SEWER EASEMENT |
| NAD | = NORTH AMERICAN DATUM | UE | = UTILITY EASEMENT |
| NO. | = NUMBER | ■ | = SET 4"x4" CONCRETE (PRM) W/ALUMINUM DISC STAMPED "LB 7055 PRM" UNLESS OTHERWISE NOTED |
| NT | = NON TANGENT | ● | = SET NAIL & BRASS DISC STAMPED "LB 7055 PRM" UNLESS OTHERWISE NOTED |
| (NR) | = NON RADIAL | | |
| ORB | = OFFICIAL RECORDS BOOK | | |
| PBCR | = PALM BEACH COUNTY RECORDS | | |
| PG. | = PAGE | | |

WGI
 2035 VISTA PARKWAY, WEST PALM BEACH, FL 33411
 PHONE NO. 866.909.2220 WWW.WGINC.COM
 CERT NO. 6091 - LB NO. 7055
 THIS INSTRUMENT WAS PREPARED BY KENNETH J. BUCHANAN,
 P.S.M. PROFESSIONAL SURVEYOR AND MAPPER,
 LICENSE NO. 7202 FOR THE FIRM: WANTMAN GROUP, INC.

SHEET #:	TOTAL SHEETS
10	11