

# ARDEN P.U.D. POD K

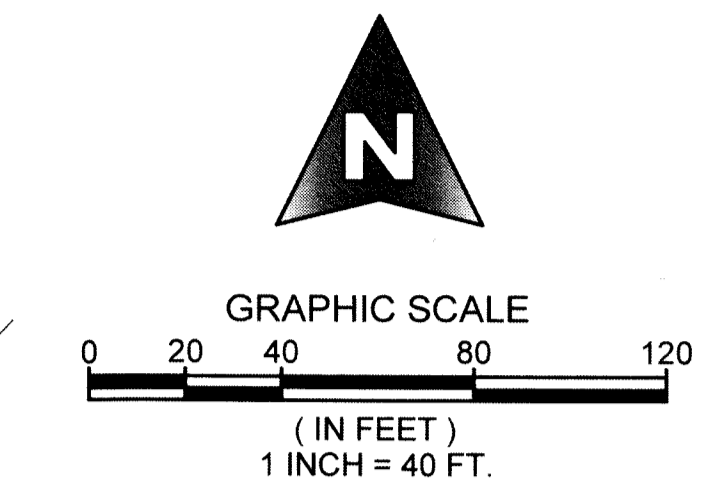
BEING A REPLAT OF A PORTION OF TRACT "FD", ARDEN P.U.D. PLAT 1, AS RECORDED IN PLAT BOOK 122, PAGES 32 THROUGH 51, PUBLIC RECORDS OF PALM BEACH COUNTY, FLORIDA, AND LYING IN SECTION 33, TOWNSHIP 43 SOUTH, RANGE 40 EAST, PALM BEACH COUNTY, FLORIDA.

COORDINATE NOTE:  
STATE PLANE COORDINATES SHOWN ARE GRID DATUM, NAD 83, 1990 ADJUSTMENT, FLORIDA EAST ZONE, COORDINATE SYSTEM 1983 STATE PLANE, TRANSVERSE MERCATOR PROJECTION  
LINEAR UNIT = US SURVEY FEET  
ALL DISTANCES ARE GROUND  
SCALE FACTOR = 0.99999219  
GROUND DISTANCE X SCALE FACTOR = GRID DISTANCE  
BEARINGS AS SHOWN HEREON ARE GRID DATUM, NAD 83, 1990 ADJUSTMENT, FLORIDA EAST ZONE.

85

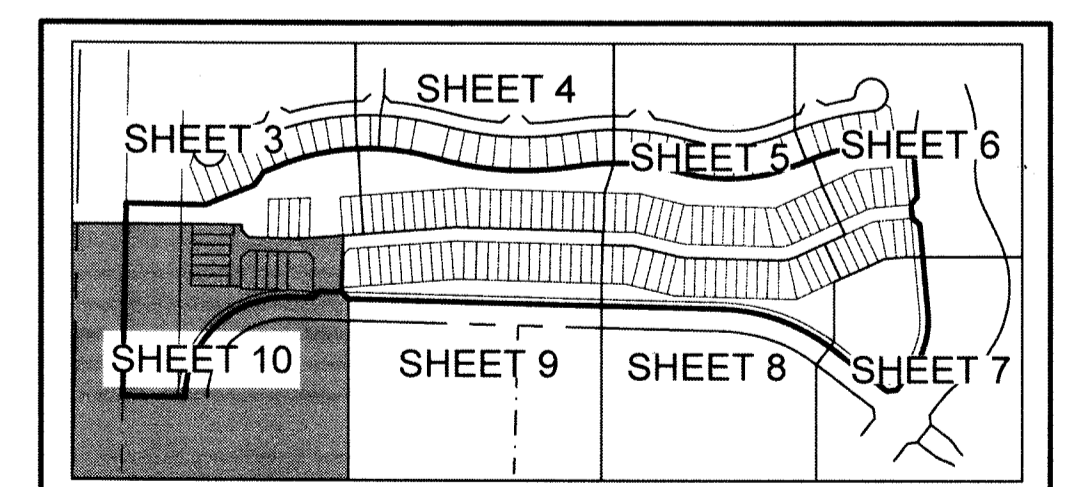
MATCH TO SHEET 3

MATCH TO SHEET 3



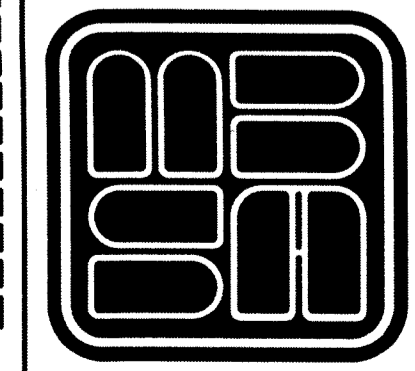
### LEGEND

- P.O.C. = POINT OF COMMENCEMENT
- P.O.B. = POINT OF BEGINNING
- P.C.P. = PERMANENT CONTROL POINT
- P.R.M. = PERMANENT REFERENCE MONUMENT
- O.R.B. = OFFICIAL RECORD BOOK
- P.B. = PLAT BOOK
- PGS. = PAGES
- D.B. = DEED BOOK
- P.B.C. = PALM BEACH COUNTY
- R/W = RIGHT OF WAY
- C.L. = CENTERLINE
- U.E. = UTILITY EASEMENT
- D.E. = DRAINAGE EASEMENT
- R. = RADIUS
- L. = ARC LENGTH
- Δ = CURVE CENTRAL ANGLE
- ⊙ = FOUND PALM BEACH COUNTY DISK IN CONCRETE
- ⊙ = SET NAIL AND ALUMINUM DISK, STAMPED P.C.P. LB 2438
- = SET 4"x4"x24" C.M. WITH ALUMINUM DISK, STAMPED PRM LB 2438
- = FOUND MAG NAIL AND 1 1/4" BRASS WASHER STAMPED PRM LB 2438
- = FOUND 4"x4"x24" C.M. WITH ALUMINUM DISK, STAMPED P.R.M. L.B. 2438
- L.M.E. = LAKE MAINTENANCE EASEMENT
- C.L. = CHORD LENGTH
- C.B. = CHORD BEARING
- L.M.A.E. = LAKE MAINTENANCE ACCESS EASEMENT
- R.L. = RADIAL LINE
- N. = NORTHING, WHEN USED WITH COORDINATES
- E. = EASTING, WHEN USED WITH COORDINATES
- S.E. = SEWER EASEMENT
- W.E. = WATER EASEMENT
- L.A.E. = LIMITED ACCESS EASEMENT
- L.S.E. = LIFT STATION EASEMENT
- FD. = FOUND
- OA. = OVERALL
- C.M. = CONCRETE MONUMENT
- F.P.L. = FLORIDA POWER AND LIGHT
- L.E. = LANDSCAPE EASEMENT
- NO. = NUMBER
- P.B.C.U.E. = PALM BEACH COUNTY UTILITY EASEMENT
- P.S.M. = PROFESSIONAL SURVEYOR AND MAPPER
- D.O.T. = DEPARTMENT OF TRANSPORTATION
- F.D.O.T. = FLORIDA DEPARTMENT OF TRANSPORTATION
- P.U.D. = PLANNED UNIT DEVELOPMENT
- W.M.E. = WATER MANAGEMENT EASEMENT
- W.M.A.E. = WATER MANAGEMENT ACCESS EASEMENT
- S.E. = SIDEWALK EASEMENT
- NPBCID = NORTHERN PALM BEACH COUNTY IMPROVEMENT DISTRICT
- LB. = PROFESSIONAL SURVEYOR AND MAPPER BUSINESS LICENSE NUMBER
- EB. = PROFESSIONAL ENGINEER BUSINESS LICENSE NUMBER
- P.C. = POINT OF CURVATURE
- P.T. = POINT OF TANGENCY
- P.R.C. = POINT OF REVERSE CURVATURE
- N.T. = POINT OF NON TANGENCY
- SECTION 33/28-43-40 = SECTIONS 33 AND 28, TOWNSHIP 43 SOUTH, RANGE 40 EAST
- OHME = OVERHANG MAINTENANCE EASEMENT
- = MATCH LINE
- ⊕ = SECTION CORNER
- ⊙ = 1/4 SECTION CORNER



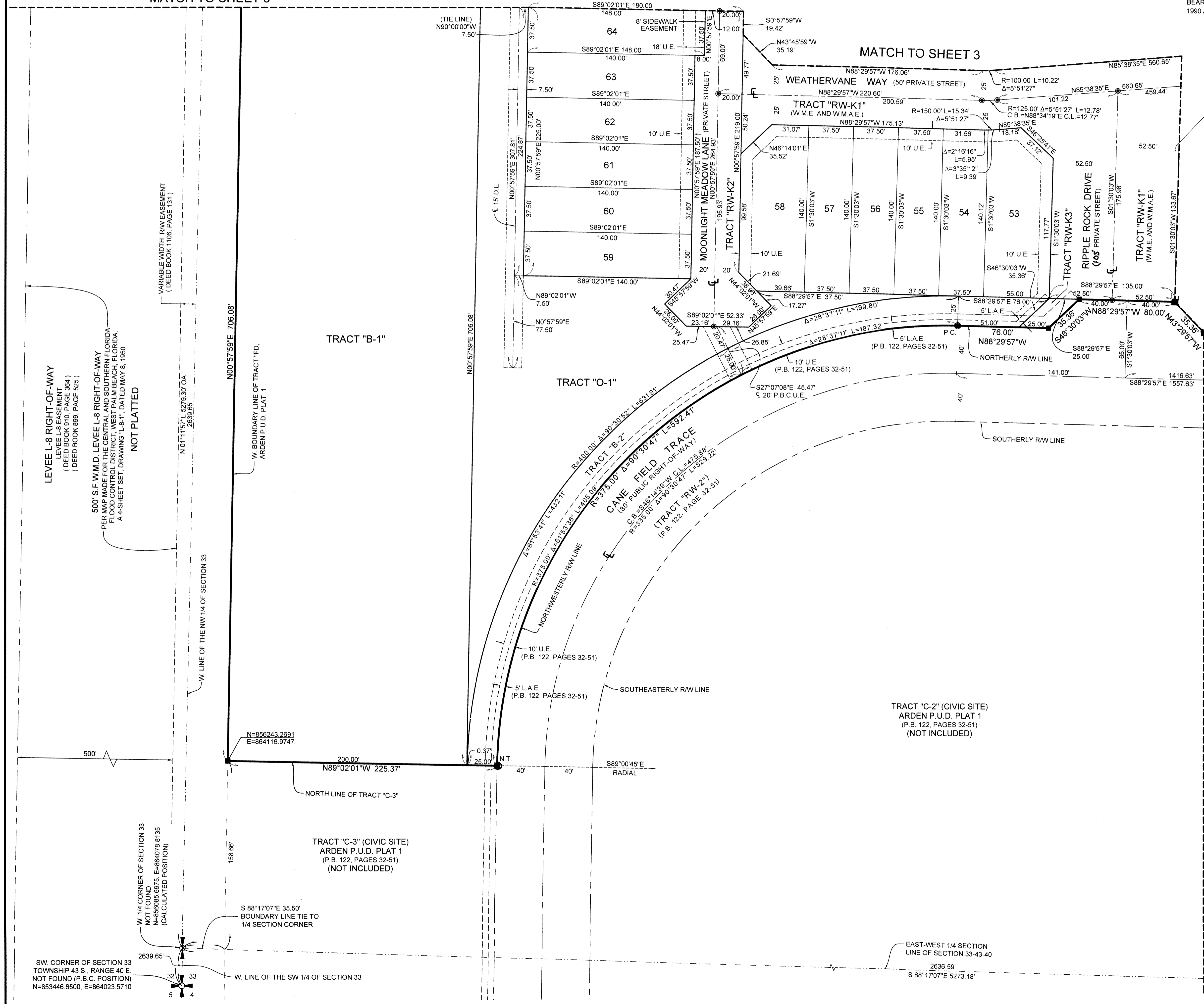
KEY MAP  
NOT TO SCALE

SHEET 10 OF 10



**MICHAEL B. SCHORAH & ASSOCIATES, INC.**  
1850 FOREST HILL BLVD., SUITE 206  
WEST PALM BEACH, FLORIDA 33406  
EB# 2438 TEL. (561) 968-0080 FAX. (561) 642-9726 LB# 2438

ARDEN P.U.D. POD K



LEVEE L-8 RIGHT-OF-WAY  
LEVEE L-8 EASEMENT  
(DEED BOOK 810, PAGE 364)  
(DEED BOOK 889, PAGE 625)

500' S.F. W.M.D. LEVEE L-8 RIGHT-OF-WAY  
PER MAP MADE FOR THE CENTRAL AND SOUTHERN FLORIDA  
FLOOD CONTROL DISTRICT, WEST PALM BEACH, FLORIDA,  
A 4-SHEET SET, DRAWING "L-8-1", DATED MAY 8, 1950.

NOT PLATTED

W. 1/4 CORNER OF SECTION 33  
NOT FOUND  
N=86085 6975; E=864078 8135  
(CALCULATED POSITION)

SW. CORNER OF SECTION 33  
TOWNSHIP 43 S., RANGE 40 E.  
NOT FOUND (P.B.C. POSITION)  
N=853446 6500; E=864023 5710

S 88°17'07"E 35.50'  
BOUNDARY LINE TIE TO  
1/4 SECTION CORNER

TRACT "C-3" (CIVIC SITE)  
ARDEN P.U.D. PLAT 1  
(P.B. 122, PAGES 32-51)  
(NOT INCLUDED)

TRACT "C-2" (CIVIC SITE)  
ARDEN P.U.D. PLAT 1  
(P.B. 122, PAGES 32-51)  
(NOT INCLUDED)

TRACT "B-1"

TRACT "O-1"

CAINE FIELD TRACE  
(60' PUBLIC RIGHT-OF-WAY)  
(TRACT "RW-2")  
(P.B. 122, PAGE 32-51)

VARIABLE WIDTH, R/W EASEMENT  
(DEED BOOK 1106, PAGE 151)

W. LINE OF THE NW 1/4 OF SECTION 33

W. BOUNDARY LINE OF TRACT "FD",  
ARDEN P.U.D. PLAT 1

N00°57'59"E 706.08'

(TIE LINE)  
N90°00'00"W  
7.50'

EAST-WEST 1/4 SECTION  
LINE OF SECTION 33-43-40  
2636.59'  
S 88°17'07"E 5273.18'