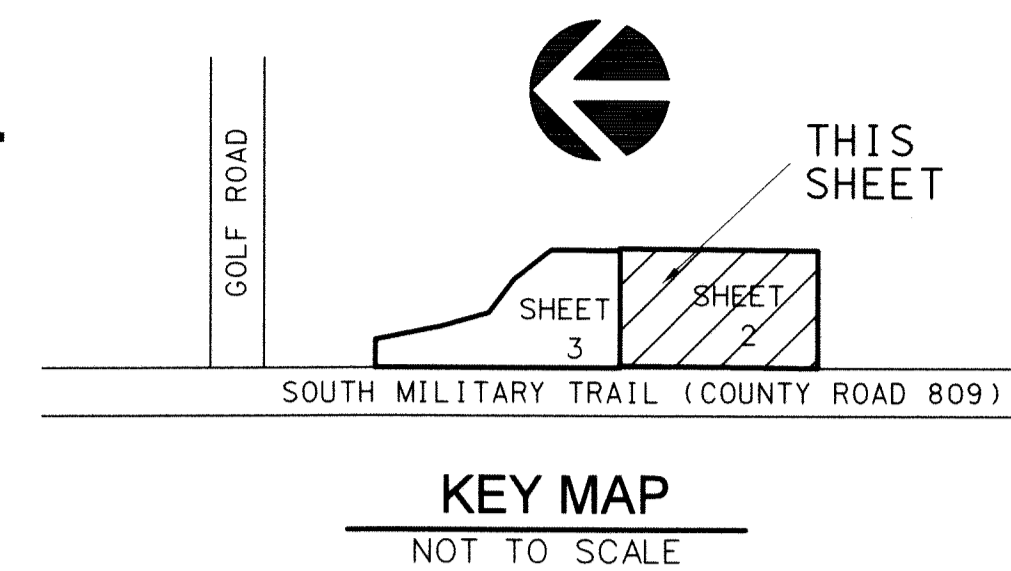


PERIMETER
 SURVEYING & MAPPING
 Prepared by: Jeff S. Hodapp, P.S.M.
 Certificate of Authorization No. LB7264
 947 Clint Moore Road
 Boca Raton, Florida 33487
 Tel: (561) 241-9988
 Fax: (561) 241-5182

BOYNTON ATRIUM P.U.D.

A PORTION OF THE SOUTHWEST ONE-QUARTER OF SECTION 36, TOWNSHIP
 45 SOUTH, RANGE 42 EAST, PALM BEACH COUNTY, FLORIDA, TOGETHER WITH A REPLAT
 OF A PORTION OF PARCEL G, "DELRAY DUNES FIRST SECTION", ACCORDING TO THE PLAT
 THEREOF, AS RECORDED IN PLAT BOOK 28 AT PAGES 222 THROUGH 224 OF THE PUBLIC
 RECORDS OF PALM BEACH COUNTY, FLORIDA.



45

SHEET 2 OF 3

LEGEND:

- ⊙ SET P.R.M. (UNLESS OTHERWISE NOTED)-4" x 4" CONC. MON. WITH ALUMINUM DISK STAMPED •LB7264 CENTERLINE

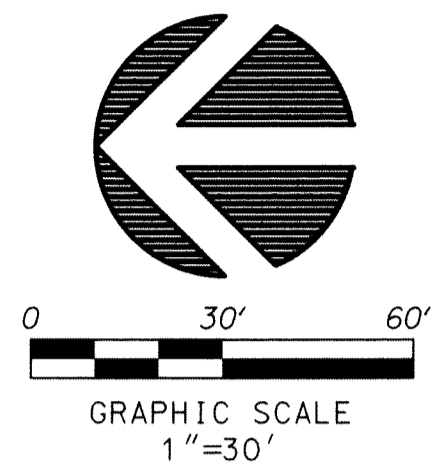
ABBREVIATIONS:

- CONC. CONCRETE
- COR. CORNER
- D.E. DRAINAGE EASEMENT
- F.D.O.T. FLORIDA DEPARTMENT OF TRANSPORTATION
- F.P.L. FLORIDA POWER AND LIGHT COMPANY
- L.B. LICENSED BUSINESS
- L.B.E. LANDSCAPE BUFFER EASEMENT
- L.M.E. LAKE MAINTENANCE EASEMENT
- L.S. LICENSED SURVEYOR
- L.S.E. LIFT STATION EASEMENT
- L.W.D.D. LAKE WORTH DRAINAGE DISTRICT
- MON. MONUMENT
- O.R.B. OFFICIAL RECORDS BOOK
- P.B. PLAT BOOK
- P.B.C.R. PALM BEACH COUNTY RECORDS
- PG. PAGE
- PGS. PAGES
- P.O.B. POINT OF BEGINNING
- P.O.C. POINT OF COMMENCEMENT
- P.R.M. PERMANENT REFERENCE MONUMENT
- P.S.M. PROFESSIONAL SURVEYOR & MAPPER
- P.U.D. PLANNED UNIT DEVELOPMENT
- R.P.B. ROAD PLAT BOOK
- R/W RIGHT-OF-WAY
- SEC. SECTION
- U.E. UTILITY EASEMENT
- SECTION 36-45-42 SECTION 36, TOWNSHIP 45 SOUTH RANGE 42 EAST

NOTES:

COORDINATES, BEARINGS AND DISTANCES

COORDINATES SHOWN ARE GRID
 DATUM - NAD 83 1990 ADJUSTMENT
 ZONE - FLORIDA EAST
 LINEAR UNIT - US SURVEY FOOT
 COORDINATE SYSTEM 1983 STATE PLANE
 TRANSVERSE MERCATOR PROJECTION
 ALL DISTANCES ARE GROUND, UNLESS OTHERWISE NOTED
 SCALE FACTOR - 1.0000355
 GROUND DISTANCE X SCALE FACTOR = GRID DISTANCE
 BEARINGS AS SHOWN HEREON ARE GRID DATUM,
 NAD 83 1990 ADJUSTMENT, FLORIDA EAST ZONE



SEE SHEET 3

