

FIELDS AT GULFSTREAM POLO PUD - PLAT FOUR

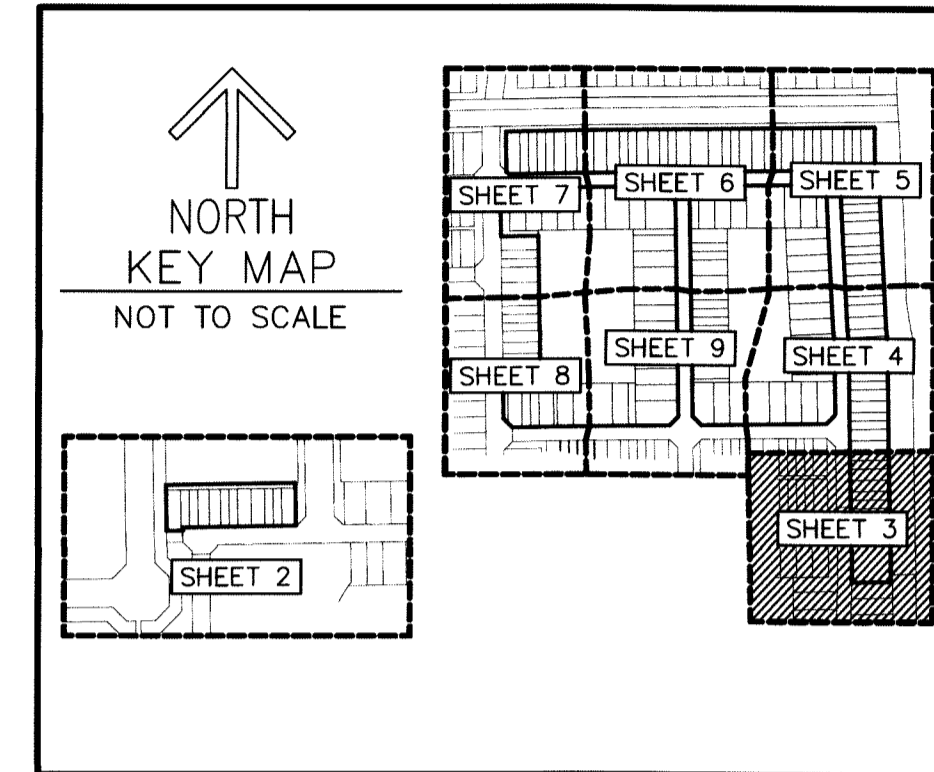
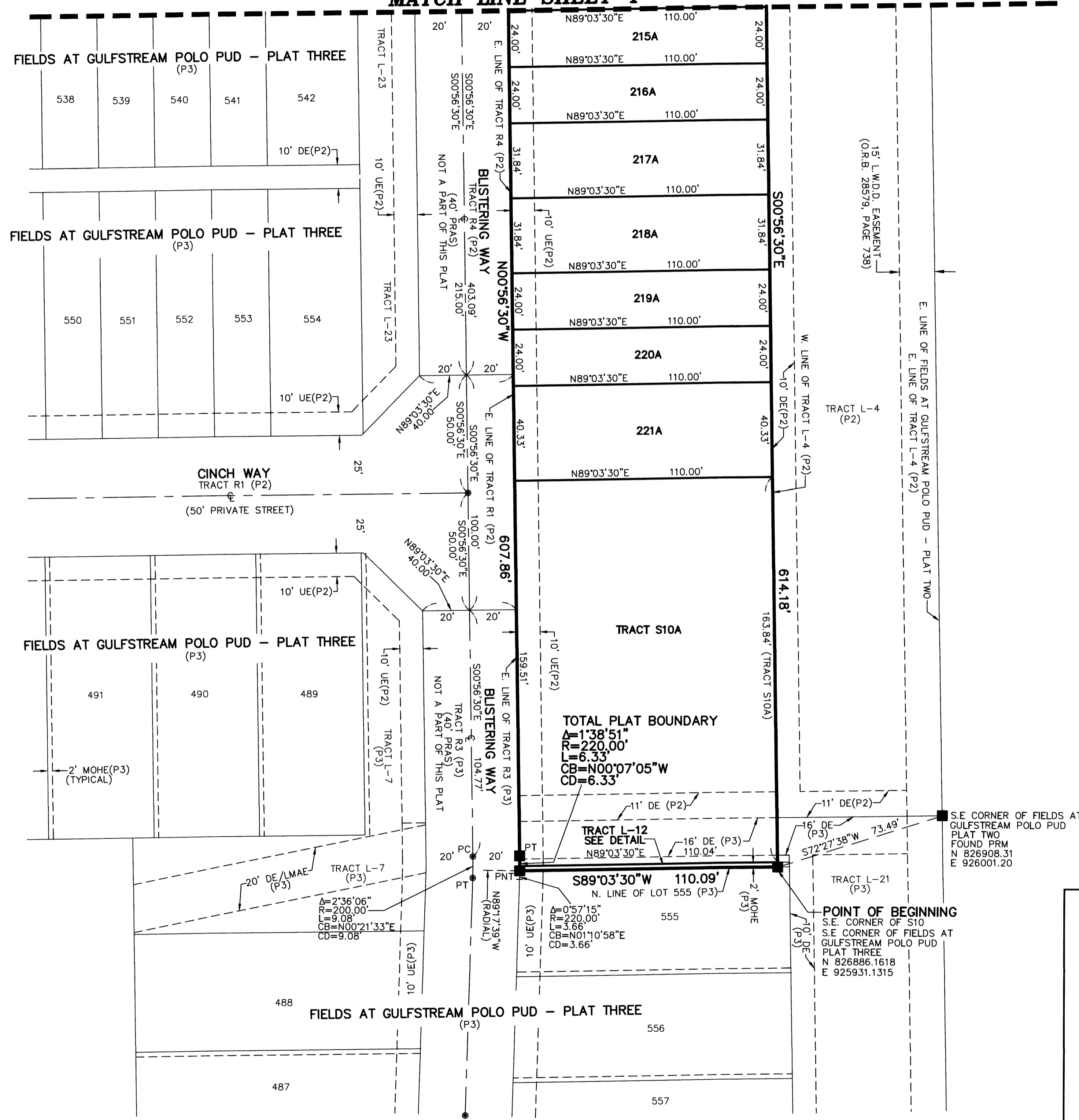
THIS INSTRUMENT PREPARED BY
DAVID P. LINDLEY
OF
CAULFIELD and WHEELER, INC.
SURVEYORS - ENGINEERS - PLANNERS
7900 GLADES ROAD, SUITE 100
BOCA RATON, FLORIDA 33434 - (561)392-1991
CERTIFICATE OF AUTHORIZATION NO. LB3591

A PLANNED UNIT DEVELOPMENT
BEING A REPLAT OF LOTS 77 THROUGH 120, LOTS 135 THROUGH 308, TRACTS L-6 THROUGH L-12, TRACTS S4, S5 AND REC,
FIELDS AT GULFSTREAM POLO PUD - PLAT TWO, AS RECORDED IN PLAT BOOK 125, PAGES 130 THROUGH 137,
TOGETHER WITH
TRACT S10, FIELDS AT GULFSTREAM POLO PUD - PLAT THREE, AS RECORDED IN PLAT BOOK 127, PAGES 162 THROUGH 176,
ALL OF THE PUBLIC RECORDS OF PALM BEACH COUNTY, FLORIDA,
LYING IN SECTION 29, TOWNSHIP 44 SOUTH, RANGE 42 EAST, PALM BEACH COUNTY, FLORIDA

156

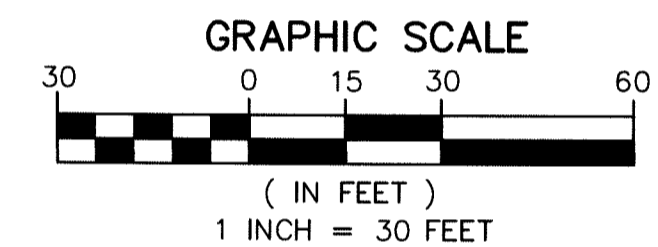
SHEET 3 OF 9

MATCH LINE SHEET 4



LEGEND/ABBREVIATIONS

- ℄ - CENTERLINE
- Δ - DELTA (CENTRAL ANGLE)
- CB - CHORD BEARING
- CD - CHORD DISTANCE
- DE - DRAINAGE EASEMENT
- E - EASTING (WHEN USED WITH COORDINATES)
- L - ARC LENGTH
- LAE - LIMITED ACCESS EASEMENT
- LB - LICENSED BUSINESS
- LMAE - LAKE MAINTENANCE ACCESS EASEMENT
- LME - LAKE MAINTENANCE EASEMENT
- LW.D.D. - LAKE WORTH DRAINAGE DISTRICT
- N - NORTHING (WHEN USED WITH COORDINATES)
- MOHE - MAINTENANCE AND OVERHANG EASEMENT
- O.R.B. - OFFICIAL RECORD BOOK
- PC - POINT OF CURVATURE
- PRAS - PRIVATE RESIDENTIAL ACCESS STREET
- PNT - POINT OF NON TANGENCY
- PT - POINT OF TANGENCY
- PBCUE - PALM BEACH COUNTY UTILITY EASEMENT
- (P1) - FIELDS AT GULFSTREAM POLO PUD - PLAT ONE (PLAT BOOK 123, PAGES 80-95)
- (P2) - FIELDS AT GULFSTREAM POLO PUD - PLAT TWO (PLAT BOOK 125, PAGES 130-137)
- (P3) - FIELDS AT GULFSTREAM POLO PUD - PLAT THREE (PLAT BOOK 127, PAGES 162-176)
- R - RADIUS
- UE - UTILITY EASEMENT
- SWE - SIDEWALK EASEMENT
- ▶ - INDICATES "ZERO" SIDE OF LOT LINE
- - DENOTES SET PERMANENT REFERENCE MONUMENT (4" x 4" x 24" CONCRETE MONUMENT WITH ALUMINUM DISK STAMPED "C&W PRM LB3591")
- - PCP - DENOTES PERMANENT CONTROL POINT



NOTES
COORDINATES, BEARINGS AND DISTANCES

COORDINATES SHOWN ARE GRID
DATUM = NAD 83 (90 ADJUSTMENT)
ZONE = FLORIDA EAST
LINEAR UNIT = US SURVEY FEET
COORDINATE SYSTEM 1983 STATE PLANE
TRANSVERSE MERCATOR PROJECTION
ALL DISTANCES ARE GROUND, UNLESS OTHERWISE NOTED
SCALE FACTOR = 1.0000236
GROUND DISTANCE X SCALE FACTOR = GRID DISTANCE
BEARINGS AS SHOWN HEREON ARE GRID DATUM,
NAD 83 (90 ADJUSTMENT), FLORIDA EAST ZONE.

DETAIL - TRACT L-12
NOT TO SCALE

