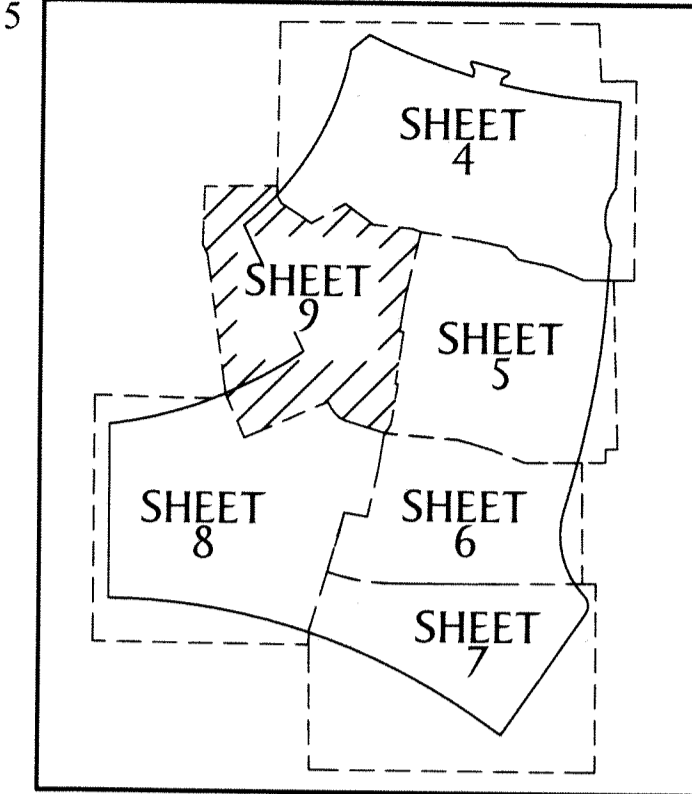


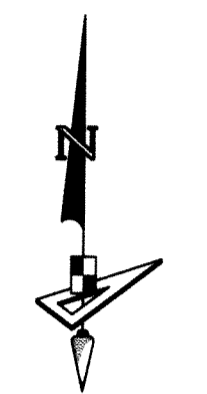
# SKY COVE - PHASE 1 A

A SUBDIVISION IN SECTIONS 1 AND 12, TOWNSHIP 43 SOUTH, RANGE 40 EAST, CITY OF WESTLAKE, PALM BEACH COUNTY, FLORIDA, BEING IN PART A REPLAT OF PORTIONS OF TOWN CENTER PARKWAY NORTH, PLAT BOOK 123, PAGES 106 THROUGH 118, INCLUSIVE, TOWN CENTER PARKWAY SOUTH - PHASE II, PLAT BOOK 126, PAGES 114 AND 115 AND PERSIMMON BOULEVARD EAST - PLAT 2, PLAT BOOK 128, PAGES 16 THROUGH 19, INCLUSIVE, PUBLIC RECORDS OF PALM BEACH COUNTY, FLORIDA

## KEY MAP (NOT TO SCALE)



# 137



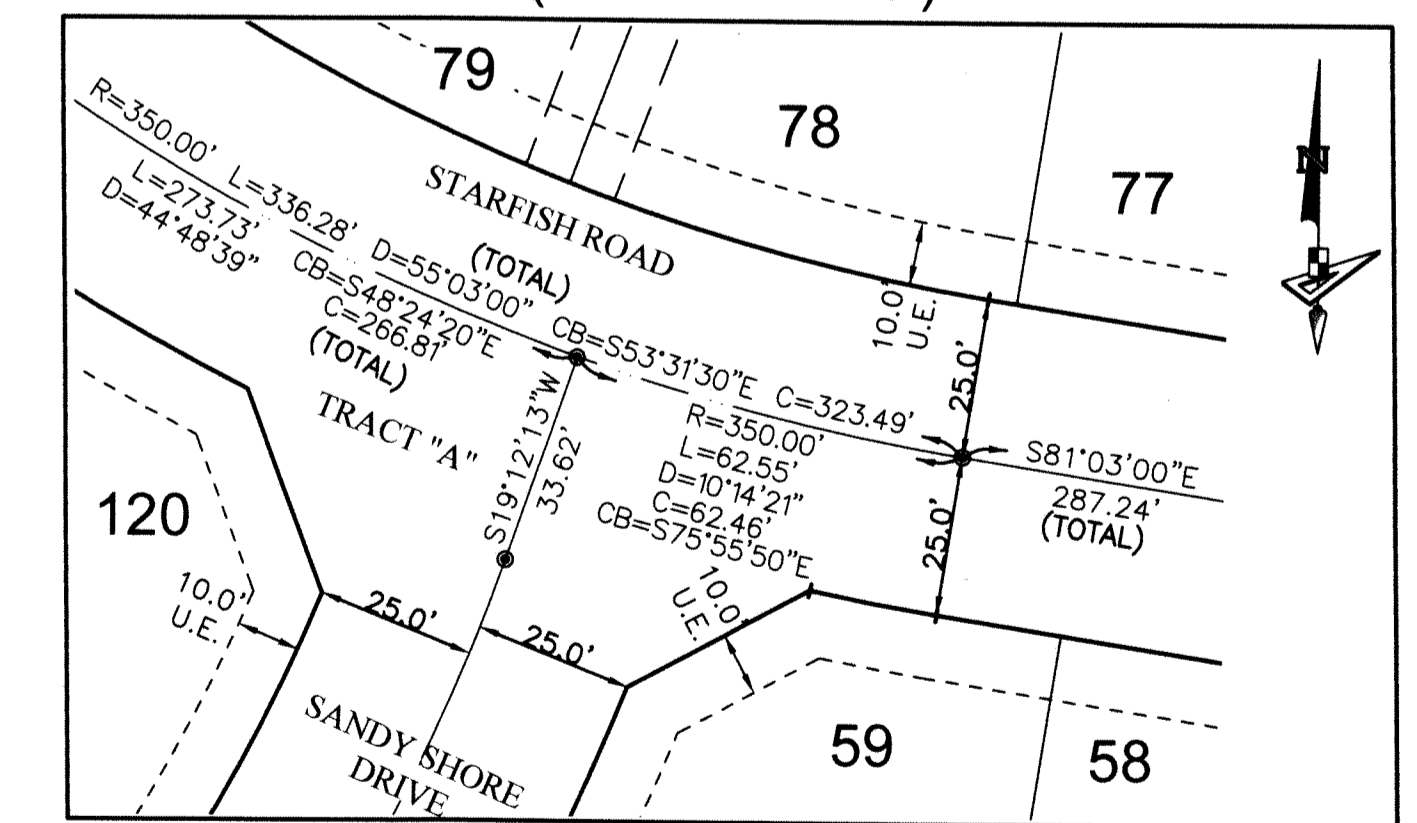
SCALE 1" = 40'

SEE NOTE ON SHEET 2 FOR BASIS OF BEARINGS

## LEGEND

- P.B. --- PLAT BOOK
- D.B. --- DEED BOOK
- R.P.B. --- ROAD PLAT BOOK
- PG./PG(S) --- PAGE(S)
- W.M.T. --- WATER MANAGEMENT TRACT
- O.S.T. --- OPEN SPACE TRACT
- R.P.E. --- RURAL PARKWAY EASEMENT
- P.B.C. --- PALM BEACH COUNTY
- NAD --- NORTH AMERICAN DATUM
- U.E. --- UTILITY EASEMENT
- D.E. --- DRAINAGE EASEMENT
- L.A.E. --- LIMITED ACCESS EASEMENT
- L.M.A.E. --- LAKE MAINTENANCE ACCESS EASEMENT
- R --- RADIUS
- L --- ARC LENGTH
- D --- DELTA ANGLE
- CB --- CHORD BEARING
- C --- CHORD
- (R) --- RADIAL
- (NR) --- NON-RADIAL
- 1-43-41 --- SECTION-TOWNSHIP-RANGE
- --- FOUND PERMANENT REFERENCE MONUMENT
- --- SET PERMANENT REFERENCE MONUMENT
- --- PERMANENT CONTROL POINT
- R/W --- RIGHT-OF-WAY

## DETAIL "D" (SCALE: 1"=30')



MATCH LINE SEE SHEET - 8

MATCH LINE SEE SHEET - 8

MATCH LINE SEE SHEET - 8

MATCH LINE SEE SHEET - 5

MATCH LINE SEE SHEET - 5

MATCH LINE SEE SHEET - 5

S13°23'02"E  
50.45' (TOTAL)  
R=1703.00' L=47.43' D=1°35'44"  
CB=N68°09'22"E C=47.42'

R=100.00'  
L=87.85'  
D=50°20'00"  
CB=S55°53'00"E  
C=85.05'

SOUTHEASTERN R/W LINE OF TOWN CENTER PARKWAY SOUTH AND NORTHWESTERLY LINE OF OPEN SPACE TRACT #1 (P.B. 128, PG(S) 114-115) LIMITS OF PLAT

UNPLATTED