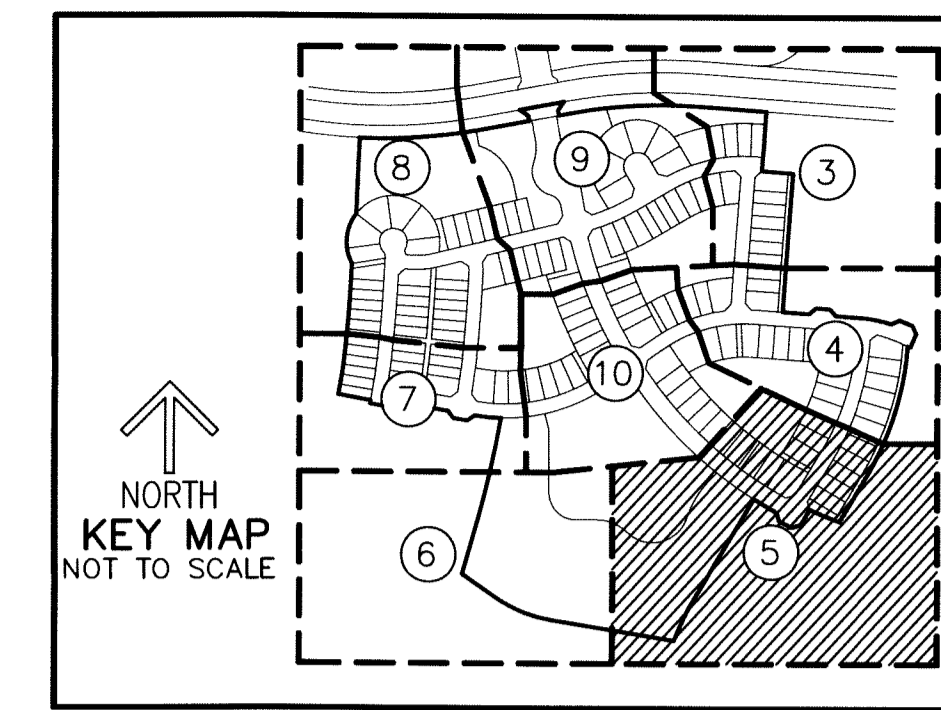


THIS INSTRUMENT PREPARED BY
 DAVID P. LINDLEY
 OF
CAULFIELD and WHEELER, INC.
 SURVEYORS — ENGINEERS — PLANNERS
 7900 GLADES ROAD, SUITE 100
 BOCA RATON, FLORIDA 33434 — (561)392-1991
 CERTIFICATE OF AUTHORIZATION NO. LB3591

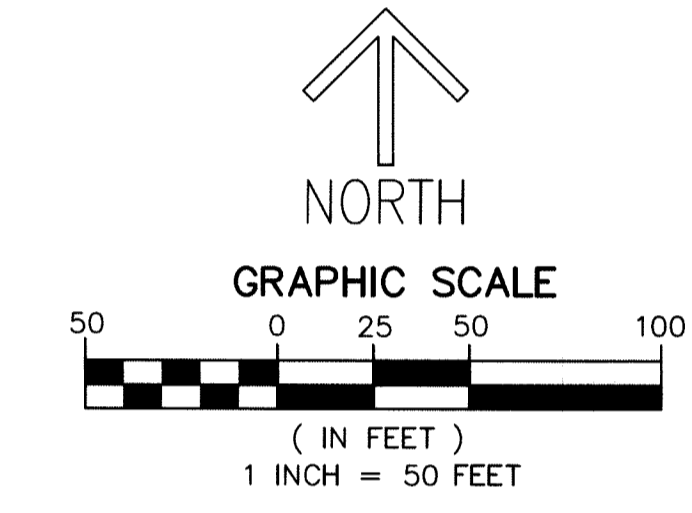
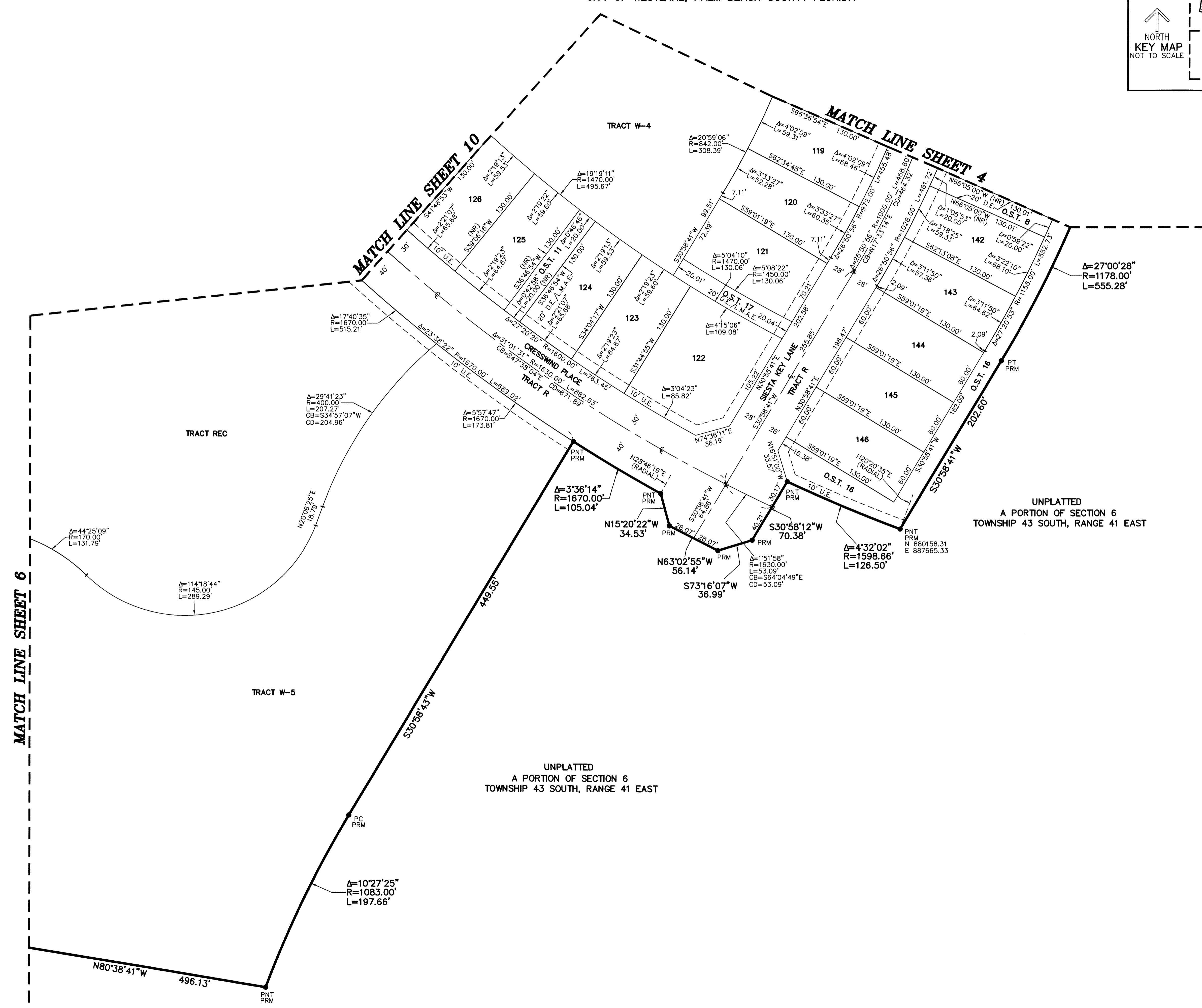
CRESSWIND PALM BEACH PHASE 1

BEING A REPLAT OF ALL OF TRACT W.M.T. 3 AND A PORTION OF TRACT OS-5,
 TOWN CENTER PARKWAY NORTH, AS RECORDED IN PLAT BOOK 123, PAGES 106 THROUGH 118
 OF THE PUBLIC RECORDS OF PALM BEACH COUNTY, FLORIDA,
 TOGETHER WITH A PORTION OF SECTION 6, TOWNSHIP 43 SOUTH, RANGE 41 EAST,
 AND SECTION 1, TOWNSHIP 43 SOUTH, RANGE 40 EAST,
 CITY OF WESTLAKE, PALM BEACH COUNTY FLORIDA



100

SHEET 5 OF 10



NOTES
COORDINATES, BEARINGS AND DISTANCES
 COORDINATES SHOWN ARE GRID
 DATUM = NAD 83 (2007 ADJUSTMENT)
 ZONE = FLORIDA EAST
 LINEAR UNIT = US SURVEY FEET
 COORDINATE SYSTEM 1983 STATE PLANE
 TRANSVERSE MERCATOR PROJECTION
 ALL DISTANCES ARE GROUND
 SCALE FACTOR = 1.0000017
 GROUND DISTANCE X SCALE FACTOR = GRID DISTANCE
 BEARINGS AS SHOWN HEREON ARE GRID DATUM,
 NAD 83 (2007 ADJUSTMENT), FLORIDA EAST ZONE.

LEGEND/ABBREVIATIONS

- CL — CENTERLINE
- Δ — DELTA (CENTRAL ANGLE)
- BLVD. — BOULEVARD
- CB — CHORD BEARING
- CD — CHORD DISTANCE
- DE — DRAINAGE EASEMENT
- E — EASTING (WHEN USED WITH COORDINATES)
- L — ARC LENGTH
- LMAE — LAKE MAINTENANCE ACCESS EASEMENT
- LAE — LIMITED ACCESS EASEMENT
- LB — LICENSED BUSINESS
- N — NORTHING (WHEN USED WITH COORDINATES)
- (NR) — NON-RADIAL LINE
- O.S.T. — OPEN SPACE TRACT
- PC — POINT OF CURVATURE
- PCC — POINT OF COMPOUND CURVATURE
- PNT — POINT OF NON-TANGENCY
- PRC — POINT OF REVERSE CURVATURE
- PT — POINT OF TANGENCY
- R — RADIUS
- RPE — RURAL PARKWAY EASEMENT
- U.E. — UTILITY EASEMENT
- — PERMANENT CONTROL POINT
- — SET PERMANENT REFERENCE MONUMENT
 SET 5/8" IRON ROD WITH CAP
 STAMPED "C&W PRM LB3591"
- — FOUND PERMANENT REFERENCE MONUMENT
 4" x 4" x 24" CONCRETE MONUMENT WITH
 DISK STAMPED "PRM LB7768"

MATCH LINE SHEET 6

MATCH LINE SHEET 10

MATCH LINE SHEET 4

TRACT REC

TRACT REC

TRACT W-5

TRACT W-4

UNPLATTED
 A PORTION OF SECTION 6
 TOWNSHIP 43 SOUTH, RANGE 41 EAST

UNPLATTED
 A PORTION OF SECTION 6
 TOWNSHIP 43 SOUTH, RANGE 41 EAST