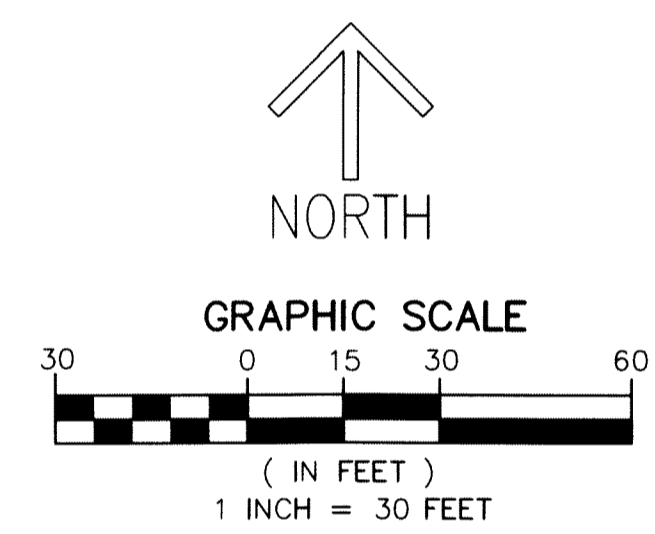


79

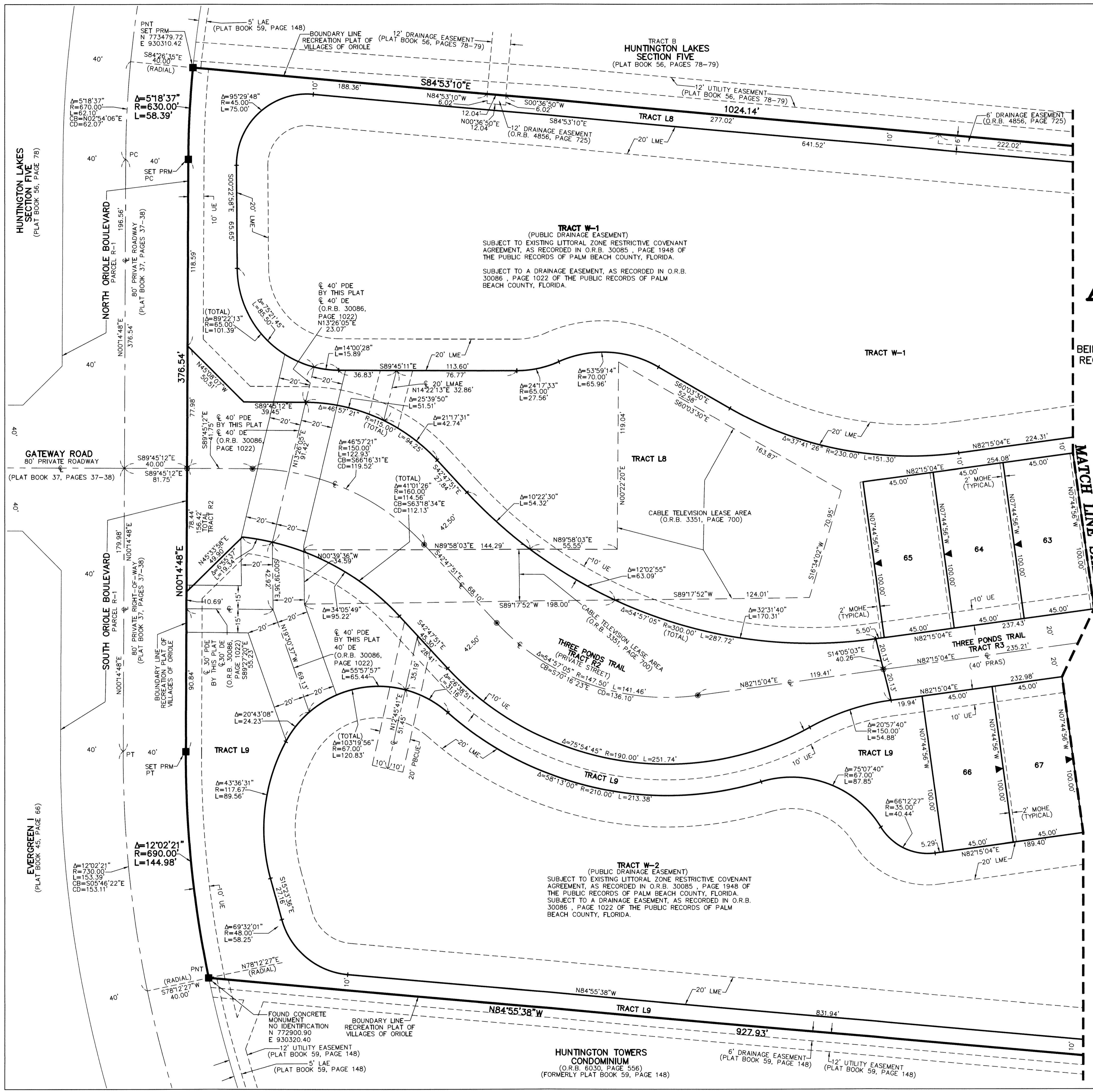
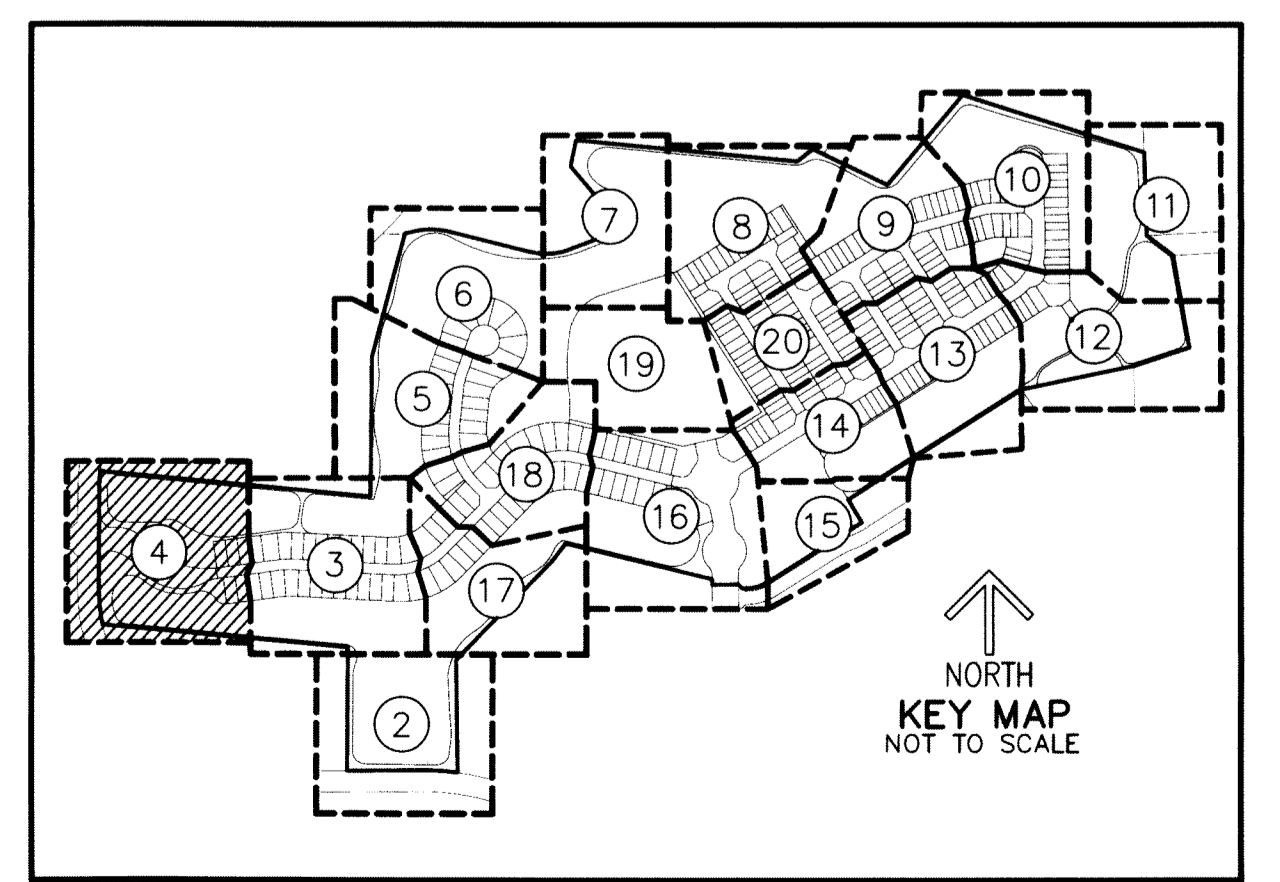
AVALON TRAILS AT VILLAGES OF ORIOLE PUD

A PLANNED UNIT DEVELOPMENT
 BEING A REPLAT OF ALL OF PARCELS G-1, G-3, G-4, G-5 AND L.W.D.D. CANAL L-33,
 RECREATION PLAT OF VILLAGE OF ORIOLE, AS RECORDED IN PLAT BOOK 31, PAGE 168,
 TOGETHER WITH
 ALL OF THE PLAT OF GOLF AND TENNIS CLUB OF VILLAGES OF ORIOLE,
 AS RECORDED IN PLAT BOOK 31, PAGE 213,
 ALL OF THE PUBLIC RECORDS OF PALM BEACH COUNTY, FLORIDA
 LYING IN SECTIONS 15 AND 16, TOWNSHIP 46 SOUTH, RANGE 42 EAST,
 PALM BEACH COUNTY, FLORIDA



NOTES
COORDINATES, BEARINGS AND DISTANCES
 COORDINATES SHOWN ARE GRID
 DATUM = NAD 83 (90/98 ADJUSTMENT)
 ZONE = FLORIDA EAST
 LINEAR UNIT = US SURVEY FEET
 COORDINATE SYSTEM 1983 STATE PLANE
 TRANSVERSE MERCATOR PROJECTION
 ALL DISTANCES ARE GROUND
 SCALE FACTOR = 1.0000288
 GROUND DISTANCE X SCALE FACTOR = GRID DISTANCE
 BEARINGS AS SHOWN HEREON ARE GRID DATUM,
 NAD 83 (1990 ADJUSTMENT), FLORIDA EAST ZONE.

LEGEND/ABBREVIATIONS
 C - CENTERLINE
 Δ - DELTA (CENTRAL ANGLE)
 CB - CHORD BEARING
 CD - CHORD DISTANCE
 DE - DRAINAGE EASEMENT
 E - EASTING (WHEN USED WITH COORDINATES)
 L - ARC LENGTH
 LAE - LIMITED ACCESS EASEMENT
 LB - LICENSED BUSINESS
 LMAE - LAKE MAINTENANCE ACCESS EASEMENT
 LME - LAKE MAINTENANCE EASEMENT
 LSE - LIFT STATION EASEMENT
 L.W.D.D. - LAKE WORTH DRAINAGE DISTRICT
 N - NORTHING (WHEN USED WITH COORDINATES)
 MOHE - MAINTENANCE AND OVERHANG EASEMENT
 O.R.B. - OFFICIAL RECORD BOOK
 PDE - PUBLIC DRAINAGE EASEMENT
 PRAS - PRIVATE RESIDENTIAL ACCESS STREET
 PBCUE - PALM BEACH COUNTY UTILITY EASEMENT
 PC - POINT OF CURVATURE
 PNT - POINT OF NON-TANGENCY
 PRC - POINT OF REVERSE CURVATURE
 PT - POINT OF TANGENCY
 R - RADIUS
 UE - UTILITY EASEMENT
 ◀ - INDICATES "ZERO" SIDE OF LOT LINE
 ■ PRM - DENOTES PERMANENT REFERENCE MONUMENT
 4" x 4" x 24" CONCRETE MONUMENT WITH
 ALUMINUM DISK STAMPED "C&W PRM LB3591"
 ● PCP - DENOTES PERMANENT CONTROL POINT
 NAIL AND METAL DISK STAMPED "PCP LB3591"
 ▲ - DENOTES PERMANENT REFERENCE MONUMENT
 NAIL AND DISK STAMPED "PRM" LB 3591



HUNTINGTON LAKES SECTION FIVE (PLAT BOOK 56, PAGE 78)

GATEWAY ROAD 80' PRIVATE ROADWAY (PLAT BOOK 37, PAGES 37-38)

NORTH ORIOLE BOULEVARD PARCEL R-1 (PLAT BOOK 37, PAGES 37-38)

EVERGREEN I (PLAT BOOK 45, PAGE 66)

TRACT W-1
 (PUBLIC DRAINAGE EASEMENT)
 SUBJECT TO EXISTING LITTORAL ZONE RESTRICTIVE COVENANT AGREEMENT, AS RECORDED IN O.R.B. 30085, PAGE 1948 OF THE PUBLIC RECORDS OF PALM BEACH COUNTY, FLORIDA.
 SUBJECT TO A DRAINAGE EASEMENT, AS RECORDED IN O.R.B. 30086, PAGE 1022 OF THE PUBLIC RECORDS OF PALM BEACH COUNTY, FLORIDA.

TRACT L8

TRACT L9

TRACT W-2
 (PUBLIC DRAINAGE EASEMENT)
 SUBJECT TO EXISTING LITTORAL ZONE RESTRICTIVE COVENANT AGREEMENT, AS RECORDED IN O.R.B. 30085, PAGE 1948 OF THE PUBLIC RECORDS OF PALM BEACH COUNTY, FLORIDA.
 SUBJECT TO A DRAINAGE EASEMENT, AS RECORDED IN O.R.B. 30086, PAGE 1022 OF THE PUBLIC RECORDS OF PALM BEACH COUNTY, FLORIDA.

HUNTINGTON TOWERS CONDOMINIUM
 (O.R.B. 603, PAGE 556)
 (FORMERLY PLAT BOOK 59, PAGE 148)