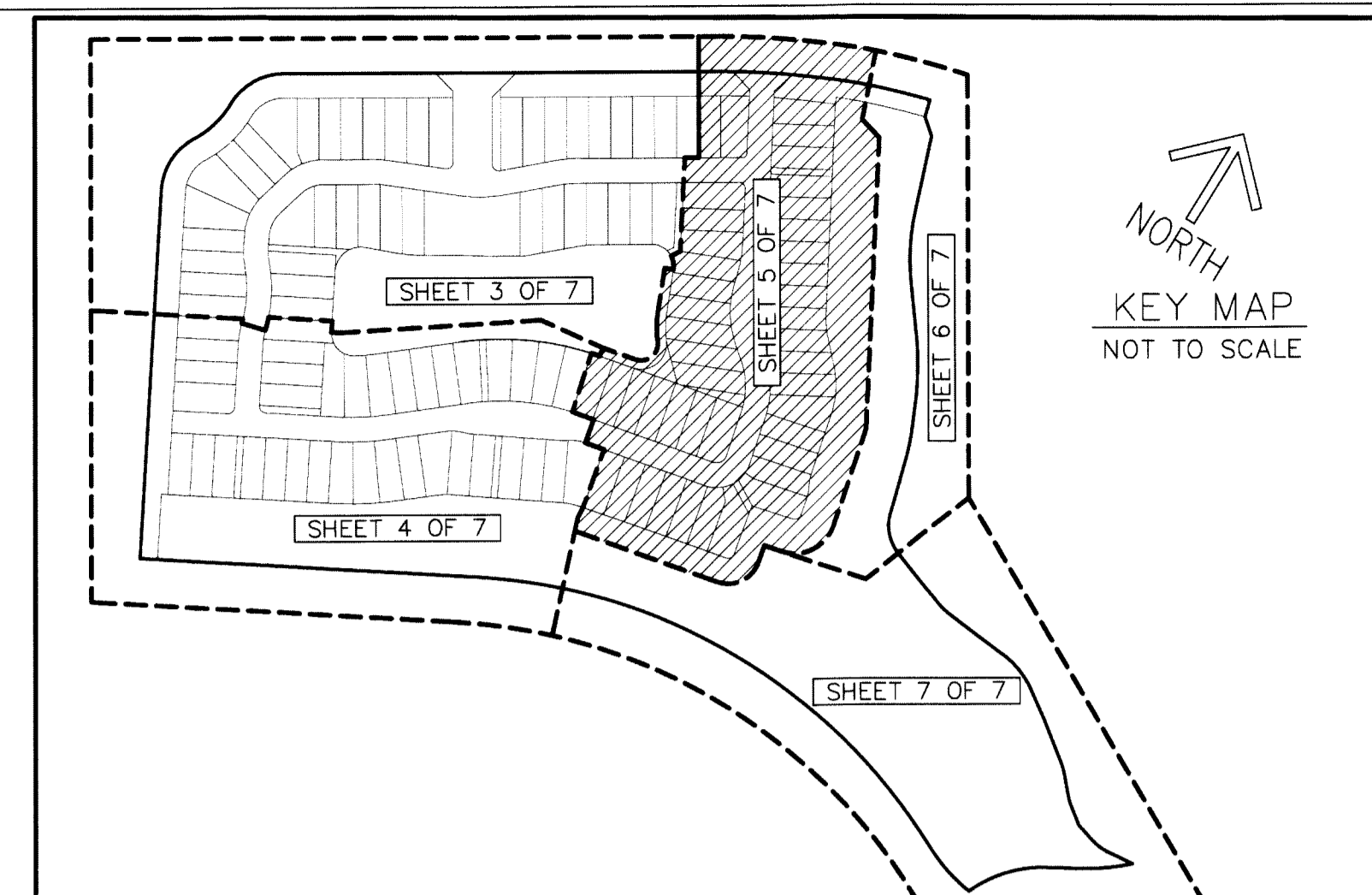


AVENIR SITE PLAN 1 - POD 3

A PLANNED UNIT DEVELOPMENT
 BEING A REPLAT OF A PORTION OF AVENIR, PARCEL "A-3", AVENIR,
 AS RECORDED IN PLAT BOOK 127, PAGES 85 THROUGH 109 OF
 THE PUBLIC RECORDS OF PALM BEACH COUNTY, FLORIDA,
 LYING IN SECTION 15,
 TOWNSHIP 42 SOUTH, RANGE 41 EAST,
 CITY OF PALM BEACH GARDENS, PALM BEACH COUNTY, FLORIDA.

- LEGEND/ABBREVIATIONS**
- C - CENTERLINE
 - Δ - DELTA (CENTRAL ANGLE)
 - AC - ACRES
 - CD - CHORD DISTANCE
 - CD - CHORD BEARING
 - DE - DRAINAGE EASEMENT
 - L - ARC LENGTH
 - LA - LIMITED ACCESS EASEMENT
 - LB - LICENSED BUSINESS
 - LBE - LANDSCAPE BUFFER EASEMENT
 - LSE - LIFT STATION EASEMENT
 - O.R.B. - OFFICIAL RECORD BOOK
 - P.P.A.E. - PERPETUAL PUBLIC ACCESS EASEMENT
 - R - RADIUS
 - (R) - INDICATES RADIAL LINE
 - RBE - ROADWAY BUFFER EASEMENT
 - SF - SQUARE FEET
 - SJAE - SEACOAST UTILITY AUTHORITY EASEMENT
 - UE - UTILITY EASEMENT
 - PRM - DENOTES PERMANENT REFERENCE MONUMENT
 - 5/8" IRON ROD AND CAP STAMPED "C&W PRM LB3591"
 - - DENOTES PERMANENT CONTROL POINT

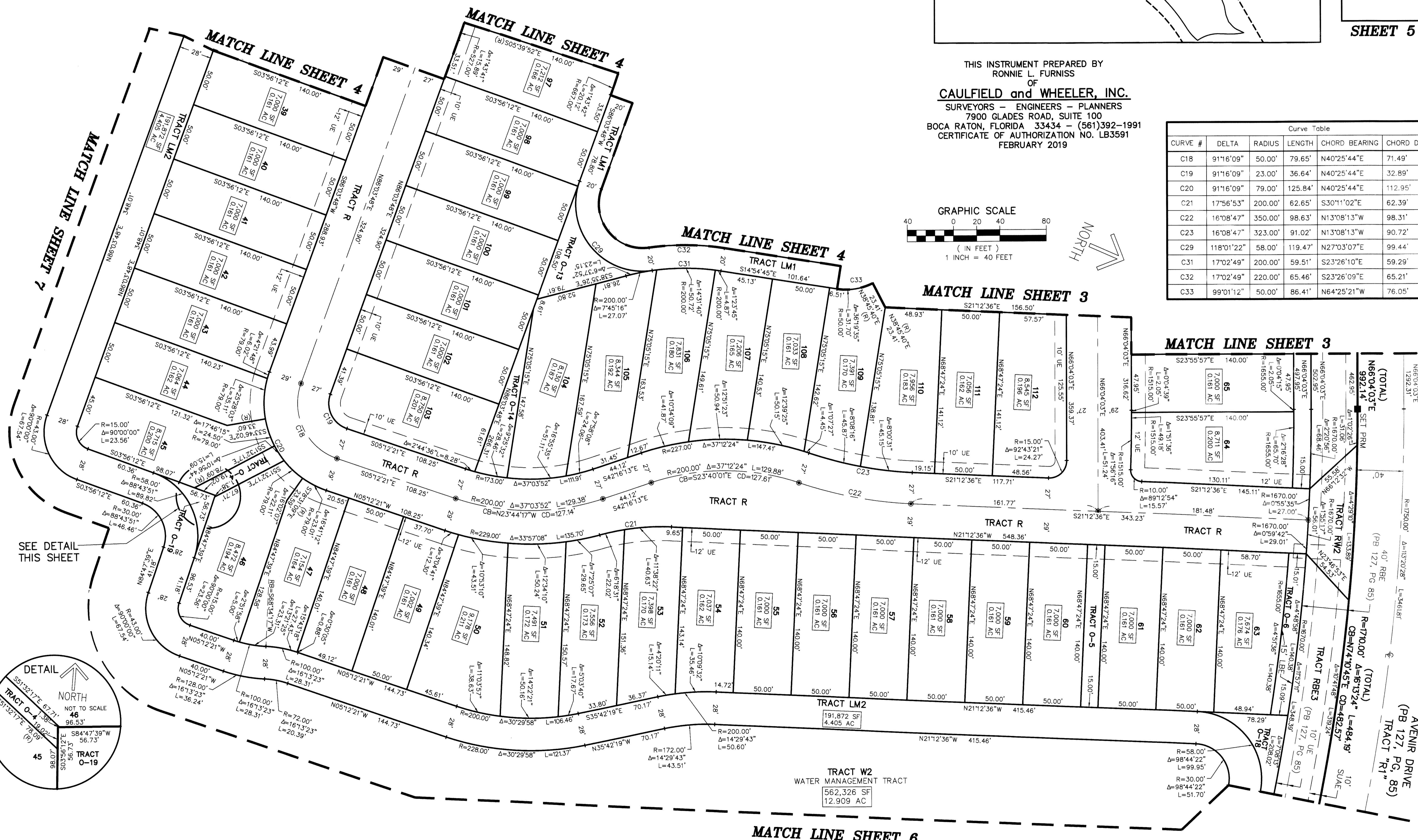
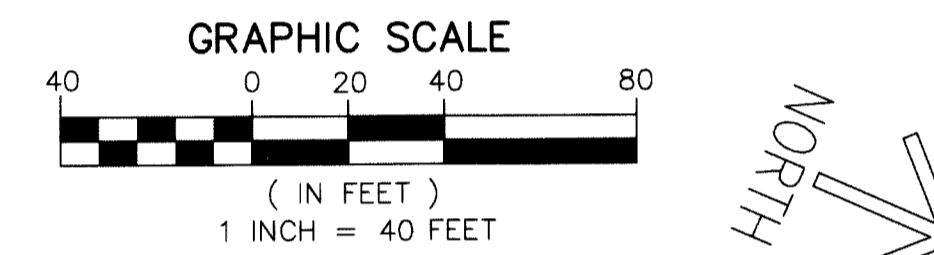


45

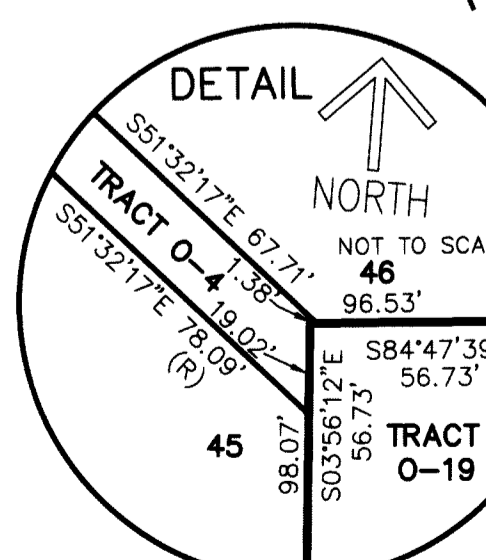
SHEET 5 OF 7

THIS INSTRUMENT PREPARED BY
 RONNIE L. FURNESS
 OF
CAULFIELD and WHEELER, INC.
 SURVEYORS - ENGINEERS - PLANNERS
 7900 GLADES ROAD, SUITE 100
 BOCA RATON, FLORIDA 33434 - (561)392-1991
 CERTIFICATE OF AUTHORIZATION NO. LB3591
 FEBRUARY 2019

Curve Table					
CURVE #	DELTA	RADIUS	LENGTH	CHORD BEARING	CHORD DISTANCE
C18	91°16'09"	50.00'	79.65'	N40°25'44"E	71.49'
C19	91°16'09"	23.00'	36.64'	N40°25'44"E	32.89'
C20	91°16'09"	79.00'	125.84'	N40°25'44"E	112.95'
C21	17°56'53"	200.00'	62.65'	S30°11'02"E	62.39'
C22	16°08'47"	350.00'	98.63'	N13°08'13"W	98.31'
C23	16°08'47"	323.00'	91.02'	N13°08'13"W	90.72'
C29	118°01'22"	58.00'	119.47'	N27°03'07"E	99.44'
C31	17°02'49"	200.00'	59.51'	S23°26'10"E	59.29'
C32	17°02'49"	220.00'	65.46'	S23°26'09"E	65.21'
C33	99°01'12"	50.00'	86.41'	N64°25'21"W	76.05'



SEE DETAIL THIS SHEET



MATCH LINE SHEET 6