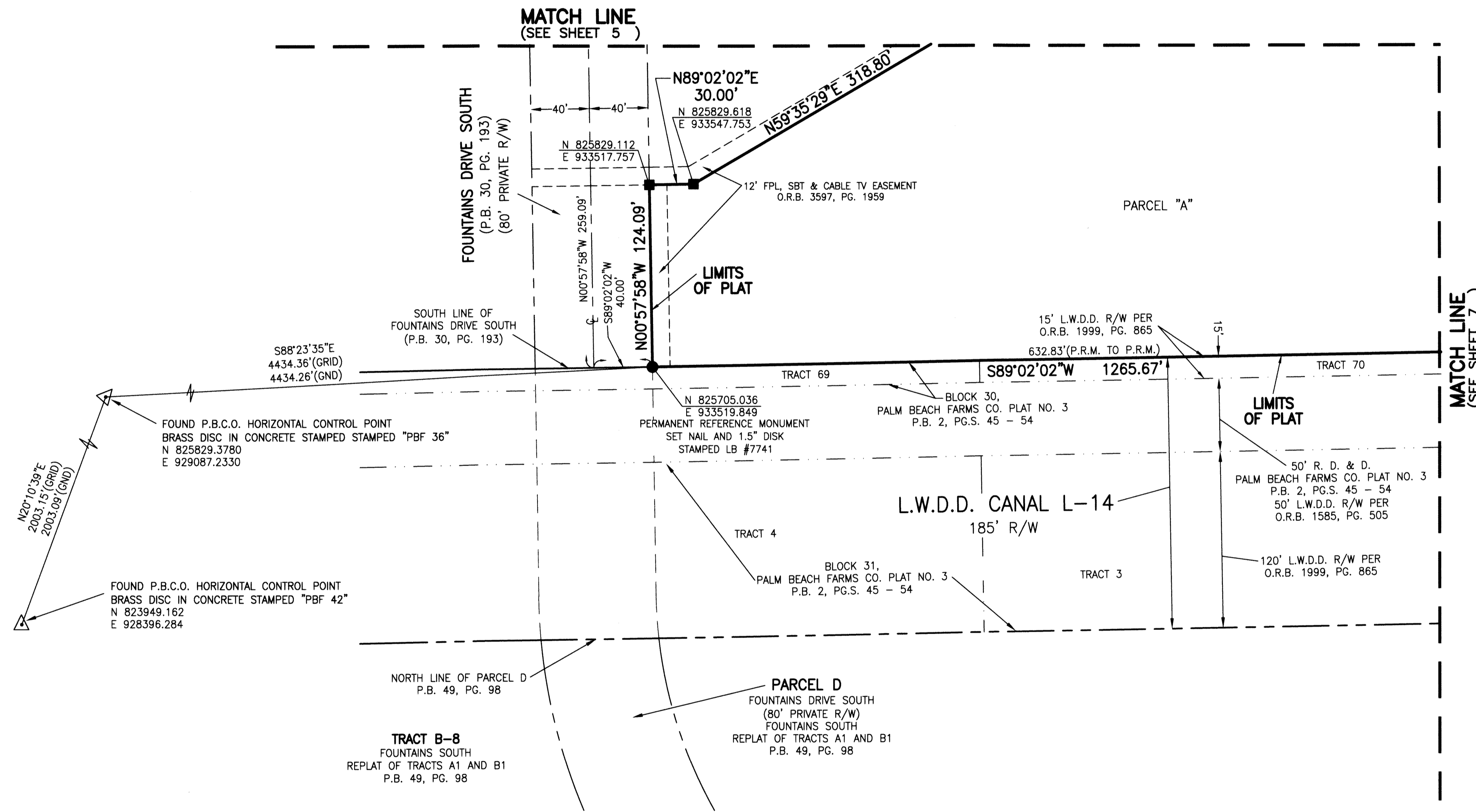
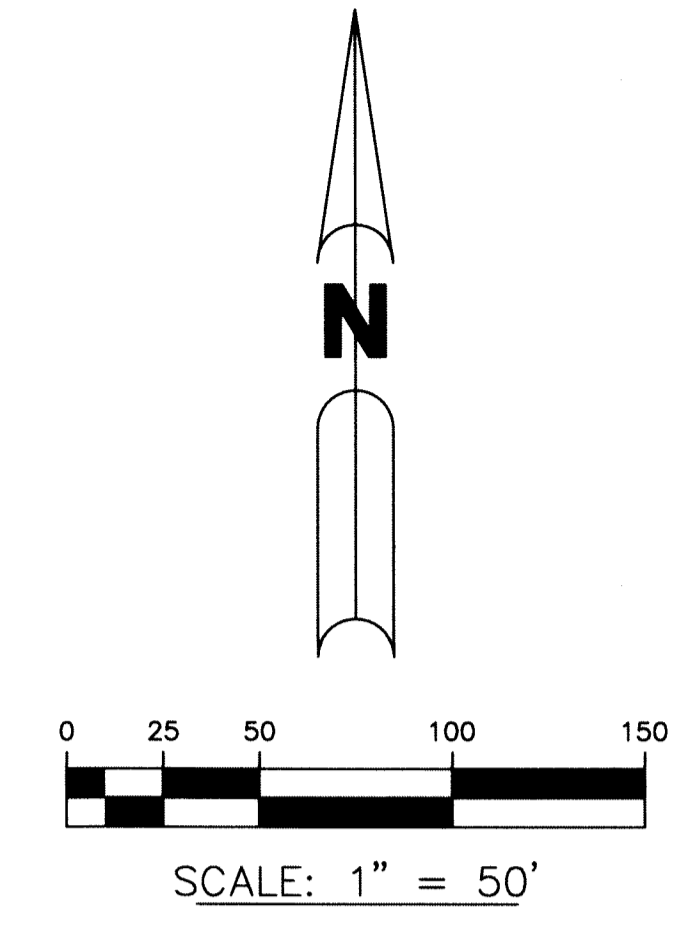


PALM BEACH GOLF CLUB ESTATES - REPLAT OF PLAT 5

BEING A REPLAT OF ALL OF THE GOLF COURSE TRACT IN PARCEL 2, PLAT 5, PALM BEACH GOLF CLUB ESTATES AS RECORDED IN PLAT BOOK 30, PAGES 193 THROUGH 196 OF THE PUBLIC RECORDS OF PALM BEACH COUNTY, FLORIDA, LYING IN SECTIONS 27 AND 34, TOWNSHIP 44 SOUTH, RANGE 42 EAST, PALM BEACH COUNTY, FLORIDA

SHEET 6 OF 7

184



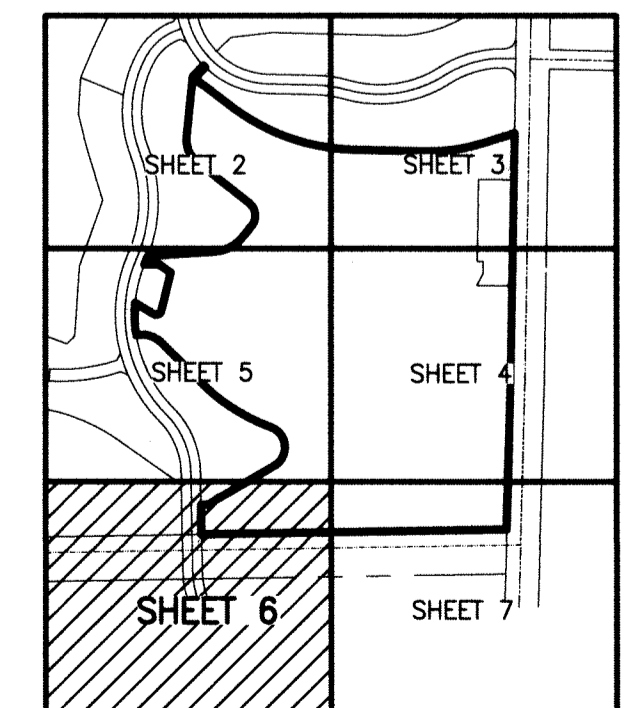
LEGEND:

- - SET PERMANENT REFERENCE MONUMENT
4"x4" CONCRETE MONUMENT WITH
1.5" DISK STAMPED L.B. #7741
- - FOUND PERMANENT REFERENCE MONUMENT
4"x4" CONCRETE MONUMENT WITH
1.5" DISK STAMPED L.B. #7741
- - SET PERMANENT REFERENCE MONUMENT
5/8" IRON ROD WITH 1.25" CAP STAMPED
L.B. #7741 (UNLESS OTHERWISE NOTED)
- △ - DELTA ANGLE
- BLK - BLOCK
- CABLE TV - PERRY CABLE TV CORPORATION
- CB - CHORD BEARING
- CH - CHORD DISTANCE
- CL - CENTERLINE
- D.B. - DEED BOOK
- D.E. - DRAINAGE EASEMENT
- ESMT - EASEMENT
- FPL - FLORIDA POWER & LIGHT
- L - ARC LENGTH
- L.A.E. - LIMITED ACCESS EASEMENT
- L.W.D.D. - LAKE WORTH DRAINAGE DISTRICT
- N.R. - NOT RADIAL
- N.T.S. - NOT TO SCALE
- O.R.B. - OFFICIAL RECORD BOOK
- O.E. - MAINTENANCE & ROOF OVERHANG EASEMENT
- P.B.C.O. - PALM BEACH COUNTY
- P.B.G.C. - PALM BEACH GOLF CLUB ESTATES
- P.B. - PLAT BOOK
- P.C. - POINT OF CURVATURE
- PG. - PAGE
- PGS. - PAGES
- P.O.I. - POINT OF INTERSECTION
- P.R.C. - POINT OF REVERSE CURVATURE
- P.R.M. - PERMANENT REFERENCE MONUMENT
- P.S.M. - PROFESSIONAL SURVEYOR AND MAPPER
- P.T. - POINT OF TANGENCY
- R - RADIUS
- (R) - RADIAL
- R/W - RIGHT-OF-WAY
- R. D. & D. - ROAD, DYKE AND DITCH RESERVATION
- SBT - SOUTHERN BELL TELEPHONE
- S.T. - SURVEY TIE
- U.E. - UTILITY EASEMENT
- 27-44-42 - SECTION 27 - TOWNSHIP 44 SOUTH - RANGE 42 EAST
- N 600500.0
E 900100.0 - STATE PLANE COORDINATES

NOTE:

COORDINATES SHOWN ARE GRID COORDINATES DATUM = NAD 83 (1990 ADJUSTMENT)
 ZONE = FLORIDA EAST ZONE
 LINEAR UNIT = U.S. SURVEY FEET
 COORDINATE SYSTEM = 1983 STATE PLANE TRANSVERSE MERCATOR PROJECTION
 ALL DISTANCES ARE GROUND (UNLESS OTHERWISE NOTED)
 SCALE FACTOR = 1.000030289
 PLAT BEARING = GRID BEARING
 GROUND DISTANCE X SCALE FACTOR = GRID DISTANCE

THIS INSTRUMENT WAS PREPARED BY
 PERRY C. WHITE, P.S.M. 4213, STATE OF FLORIDA
 SAND & HILLS SURVEYING, INC.
 8461 LAKE WORTH ROAD, SUITE 410
 LAKE WORTH, FLORIDA 33467
 LB-7741



KEY MAP
N.T.S.