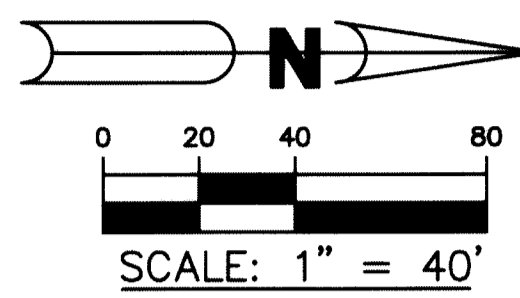


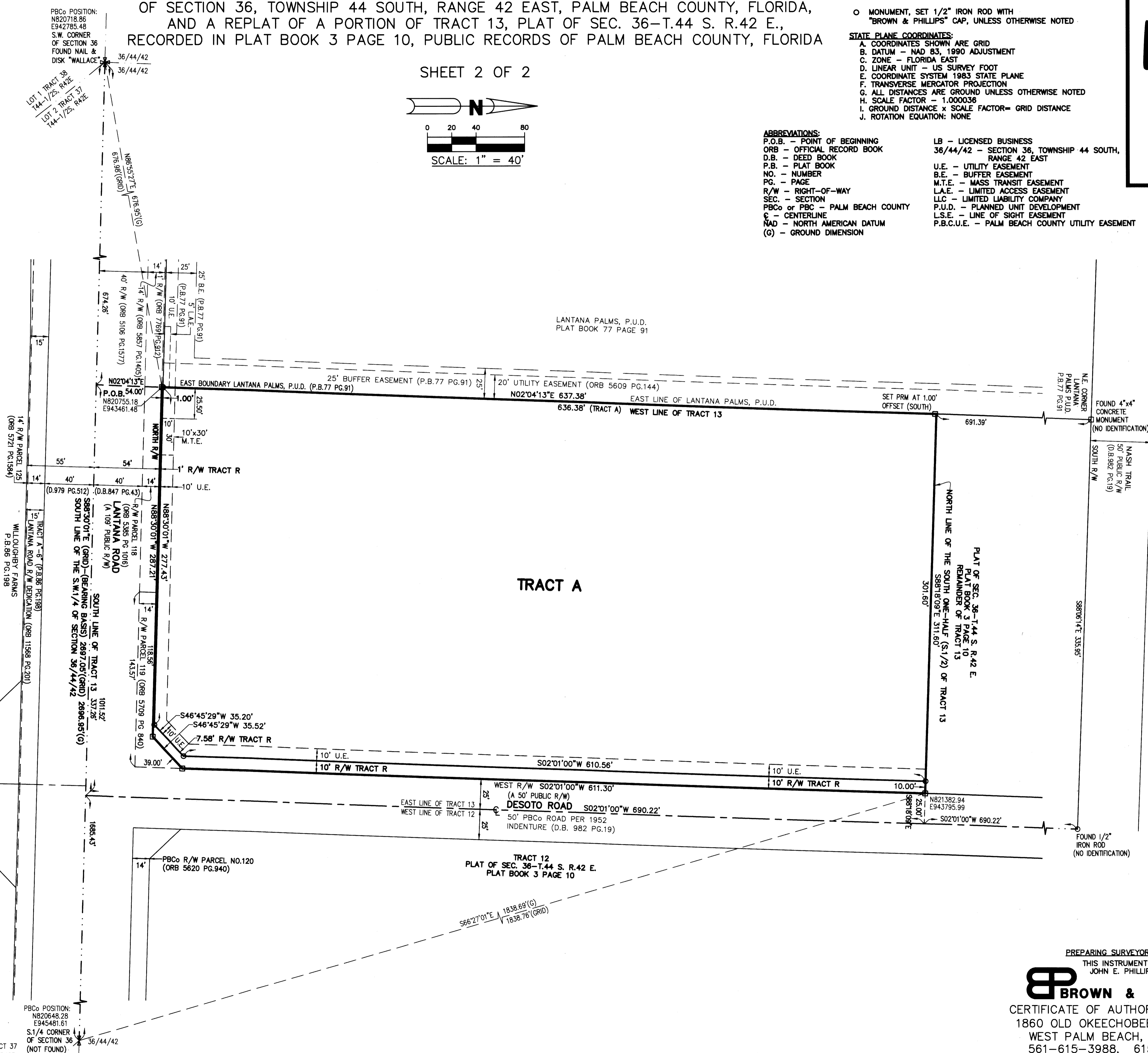
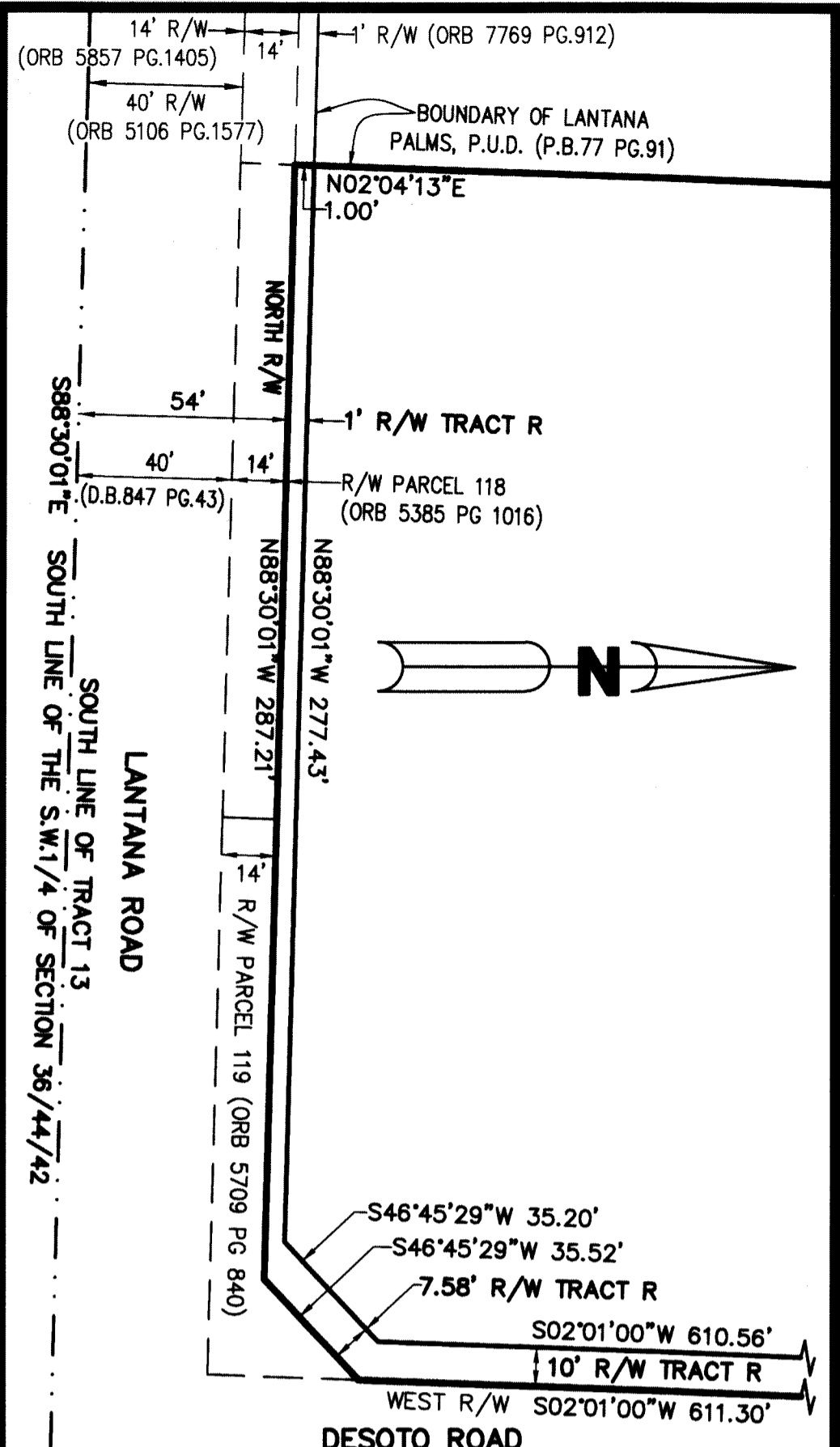
BURLINGTON SELF STORAGE OF LAKE WORTH

LYING IN THE SOUTHWEST QUARTER (S.W. 1/4), OF THE SOUTHWEST QUARTER (S.W. 1/4) OF SECTION 36, TOWNSHIP 44 SOUTH, RANGE 42 EAST, PALM BEACH COUNTY, FLORIDA, AND A REPLAT OF A PORTION OF TRACT 13, PLAT OF SEC. 36-T.44 S. R.42 E., RECORDED IN PLAT BOOK 3 PAGE 10, PUBLIC RECORDS OF PALM BEACH COUNTY, FLORIDA

SHEET 2 OF 2



- LEGEND:**
- SYMBOLS:**
- PERMANENT REFERENCE MONUMENT (P.R.M.), SET 4"x4" CONCRETE MONUMENT WITH DISK STAMPED "LB6473", UNLESS NOTED OTHERWISE
 - MONUMENT, SET 1/2" IRON ROD WITH "BROWN & PHILLIPS" CAP, UNLESS OTHERWISE NOTED
- STATE PLANE COORDINATES:**
- A. COORDINATES SHOWN ARE GRID
 - B. DATUM - NAD 83, 1990 ADJUSTMENT
 - C. ZONE - FLORIDA EAST
 - D. LINEAR UNIT - US SURVEY FOOT
 - E. COORDINATE SYSTEM 1983 STATE PLANE
 - F. TRANSVERSE MERCATOR PROJECTION
 - G. ALL DISTANCES ARE GROUND UNLESS OTHERWISE NOTED
 - H. SCALE FACTOR - 1.000038
 - I. GROUND DISTANCE x SCALE FACTOR = GRID DISTANCE
 - J. ROTATION EQUATION: NONE
- ABBREVIATIONS:**
- P.O.B. - POINT OF BEGINNING
 - ORB - OFFICIAL RECORD BOOK
 - D.B. - DEED BOOK
 - P.B. - PLAT BOOK
 - N.O. - NUMBER
 - PG. - PAGE
 - R/W - RIGHT-OF-WAY
 - SEC. - SECTION
 - PBCo or PBC - PALM BEACH COUNTY
 - C - CENTERLINE
 - NAD - NORTH AMERICAN DATUM
 - (G) - GROUND DIMENSION
 - LB - LICENSED BUSINESS
 - 36/44/42 - SECTION 36, TOWNSHIP 44 SOUTH, RANGE 42 EAST
 - U.E. - UTILITY EASEMENT
 - B.E. - BUFFER EASEMENT
 - M.T.E. - MASS TRANSIT EASEMENT
 - L.A.E. - LIMITED ACCESS EASEMENT
 - LLC - LIMITED LIABILITY COMPANY
 - P.U.D. - PLANNED UNIT DEVELOPMENT
 - L.S.E. - LINE OF SIGHT EASEMENT
 - P.B.C.U.E. - PALM BEACH COUNTY UTILITY EASEMENT



PREPARING SURVEYOR & MAPPER'S STATEMENT
 THIS INSTRUMENT WAS PREPARED BY
BROWN & PHILLIPS, INC.
 CERTIFICATE OF AUTHORIZATION # LB 6473
 1860 OLD OKEECHOBEE RD., SUITE 509
 WEST PALM BEACH, FLORIDA 33409
 561-615-3988, 615-3986 FAX