

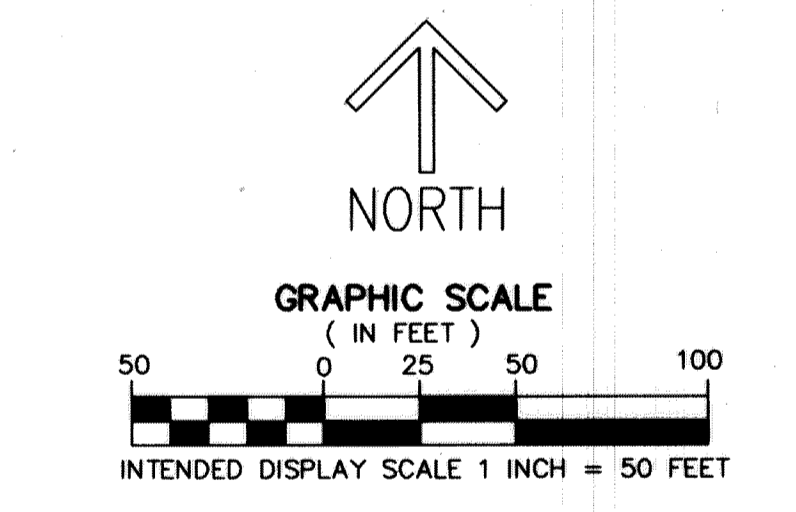
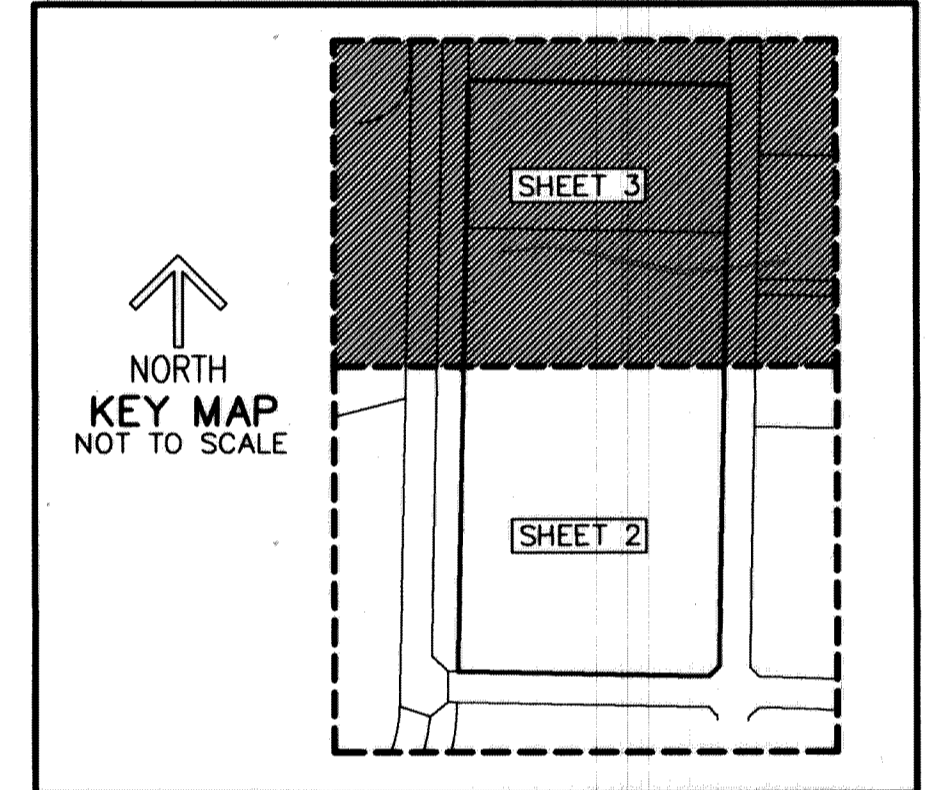
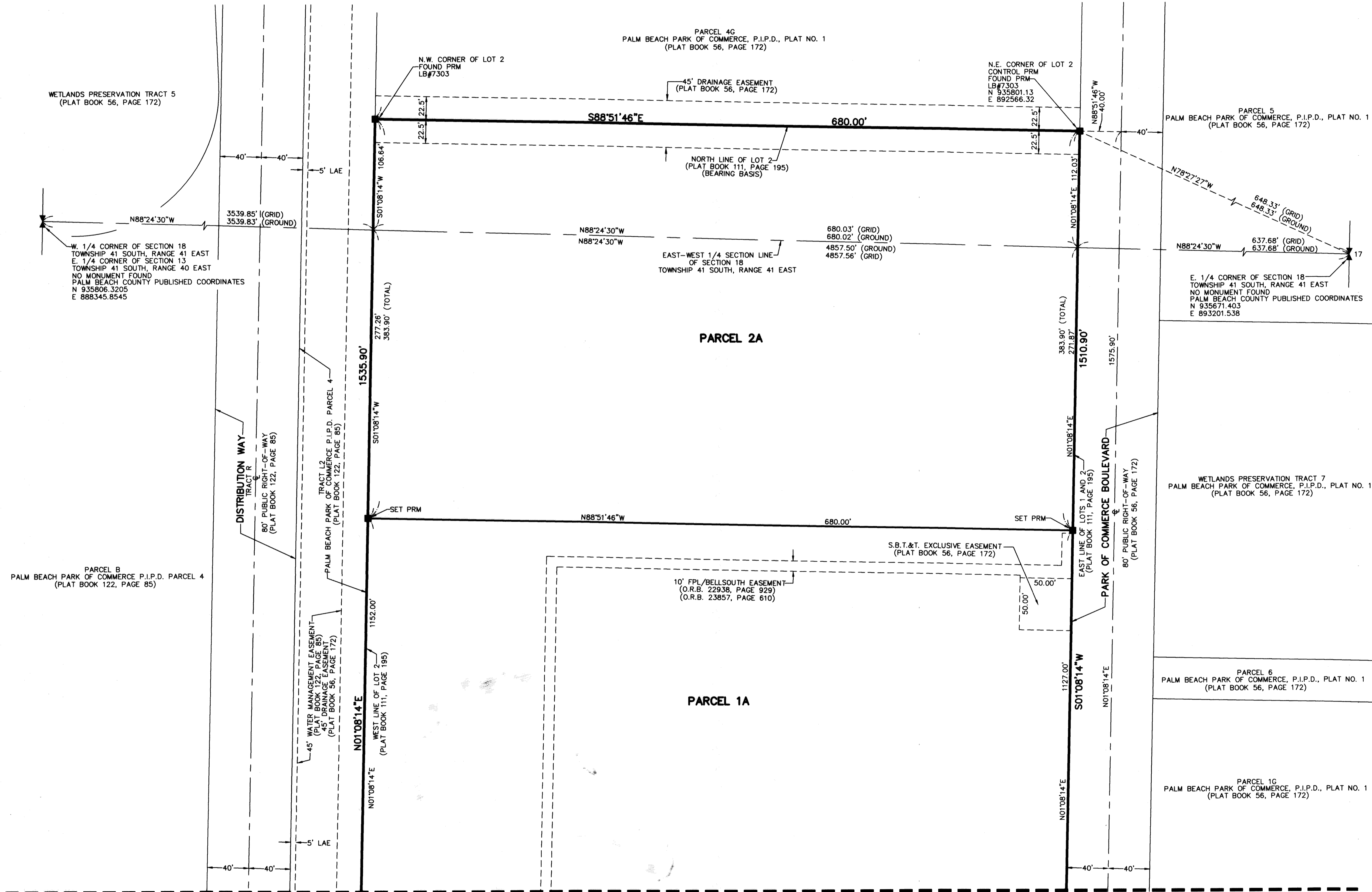
THIS INSTRUMENT PREPARED BY  
 DAVID P. LINDLEY  
 OF  
**CAULFIELD and WHEELER, INC.**  
 SURVEYORS - ENGINEERS - PLANNERS  
 7900 GLADES ROAD, SUITE 100  
 BOCA RATON, FLORIDA 33434 - (561)392-1991

# PALM BEACH PARK OF COMMERCE, P.I.P.D. - PLAT 13 REPLAT

BEING A REPLAT OF ALL OF LOTS 1 AND 2, PALM BEACH PARK OF COMMERCE, P.I.P.D. - PLAT 13,  
 ACCORDING TO THE PLAT THEREOF, AS RECORDED IN PLAT BOOK 111, PAGES 195 THROUGH 197 OF THE PUBLIC RECORDS OF PALM BEACH COUNTY, FLORIDA,  
 LYING IN SECTION 18, TOWNSHIP 41 SOUTH, RANGE 41 EAST, PALM BEACH COUNTY, FLORIDA

139

SHEET 3 OF 3



**NOTES**  
**COORDINATES, BEARINGS AND DISTANCES**  
 COORDINATES SHOWN ARE GRID  
 DATUM = NAD 83 1990 ADJUSTMENT  
 ZONE = FLORIDA EAST  
 LINEAR UNIT = US SURVEY FEET  
 COORDINATE SYSTEM 1983 STATE PLANE  
 TRANSVERSE MERCATOR PROJECTION  
 ALL DISTANCES ARE GROUND, UNLESS OTHERWISE NOTED  
 SCALE FACTOR = 1.000005579  
 GROUND DISTANCE X SCALE FACTOR = GRID DISTANCE  
 BEARINGS AS SHOWN HEREON ARE GRID DATUM,  
 NAD 83 1990 ADJUSTMENT, FLORIDA EAST ZONE.

**LEGEND/ABBREVIATIONS**  
 C - CENTERLINE  
 E - EASTING  
 FPL - FLORIDA POWER & LIGHT CO.  
 LAE - LIMITED ACCESS EASEMENT  
 LB - LICENSED BUSINESS  
 N - NORTHING  
 O.R.B. - OFFICIAL RECORD BOOK  
 UE - UTILITY EASEMENT  
 N.P.B.C.I.D. - NORTHERN PALM BEACH COUNTY  
 IMPROVEMENT DISTRICT  
 P.I.P.D. - PLANNED INDUSTRIAL PARK DEVELOPMENT  
 S.B.T.&T. - SOUTHERN BELL TELEPHONE AND  
 TELEGRAPH COMPANY  
 PRM - INDICATES SET 4" X 4" X 24" CONCRETE PERMANENT  
 REFERENCE MONUMENT WITH ALUMINUM DISK  
 STAMPED "C&W PRM LB3591" UNLESS OTHERWISE NOTED.