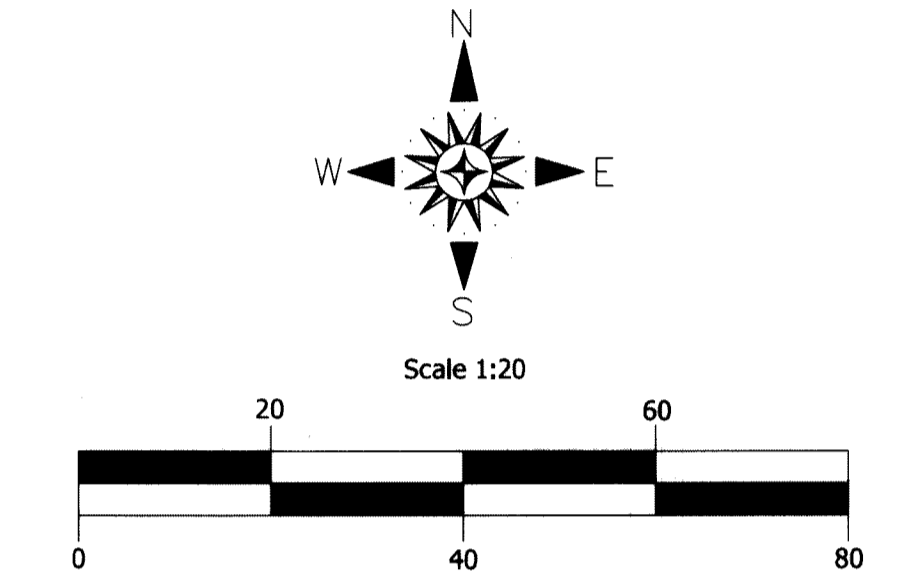
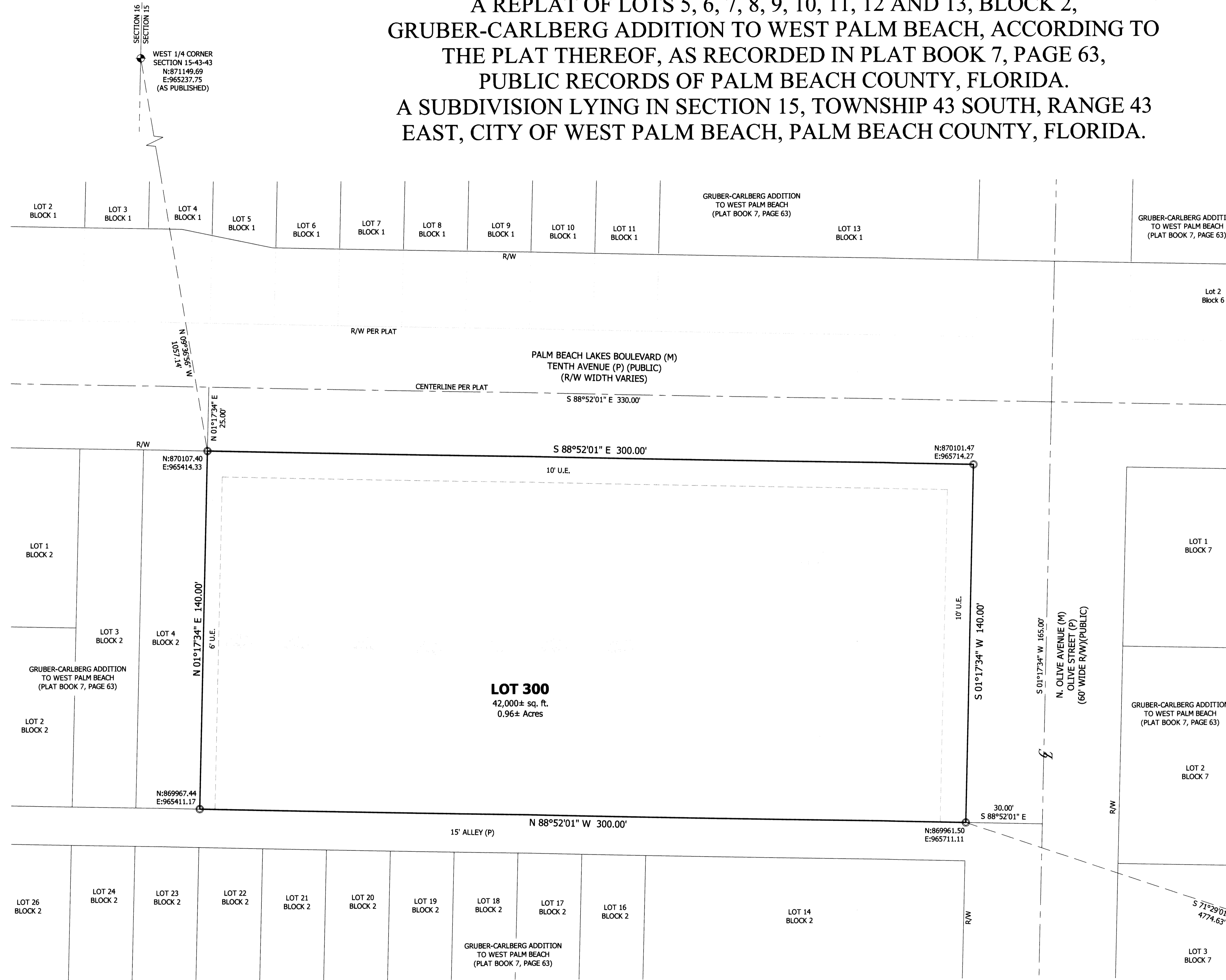


GRUBER-CARLBERG ADDITION TO WEST PALM BEACH REPLAT

A REPLAT OF LOTS 5, 6, 7, 8, 9, 10, 11, 12 AND 13, BLOCK 2,
 GRUBER-CARLBERG ADDITION TO WEST PALM BEACH, ACCORDING TO
 THE PLAT THEREOF, AS RECORDED IN PLAT BOOK 7, PAGE 63,
 PUBLIC RECORDS OF PALM BEACH COUNTY, FLORIDA.
 A SUBDIVISION LYING IN SECTION 15, TOWNSHIP 43 SOUTH, RANGE 43
 EAST, CITY OF WEST PALM BEACH, PALM BEACH COUNTY, FLORIDA.

134

SHEET 2 OF 2



COORDINATE NOTE:
 STATE PLANE COORDINATES SHOWN HEREON ARE GRID DATUM,
 BASED ON THE 2011 ADJUSTMENT OF THE NORTH AMERICAN
 DATUM OF 1983 (NAD 83/2011)
 COORDINATE SYSTEM: 1983 STATE PLANE, TRANSVERSE
 MERCATOR PROJECTION
 ZONE: FLORIDA EAST ZONE
 LINEAR UNIT: US SURVEY FEET
 ALL DISTANCES ARE GROUND
 SCALE FACTOR: 1.000051036
 GRID DISTANCE = GROUND DISTANCE x SCALE FACTOR

LEGEND	
△	SET NAIL AND TAB "P.C.P." LB 2610"
○	SET 5/8" IRON ROD WITH CAP "P.R.M. LB 2610"
℄	CENTERLINE
SQ. FT.	SQUARE FEET
R/W	RIGHT OF WAY
U.E.	UTILITY EASEMENT
(P)	DENOTES PLAT (P.B. 7, PG. 63)
(M)	DENOTES MEASURED
P.B.	PLAT BOOK
PG(S).	PAGE(S)

KING ENGINEERING ASSOCIATES, INC.
 324 NICHOLAS PARKWAY WEST, SUITE A
 CAPE CORAL, FLORIDA 33991
 PHONE 239-673-9541 FAX 239-424-8181
 FLORIDA AUTHORIZATION NO. LB6210

SOUTHEAST CORNER
 SECTION 15-43-43
 N:868445.20
 E:970238.58
 (AS PUBLISHED)