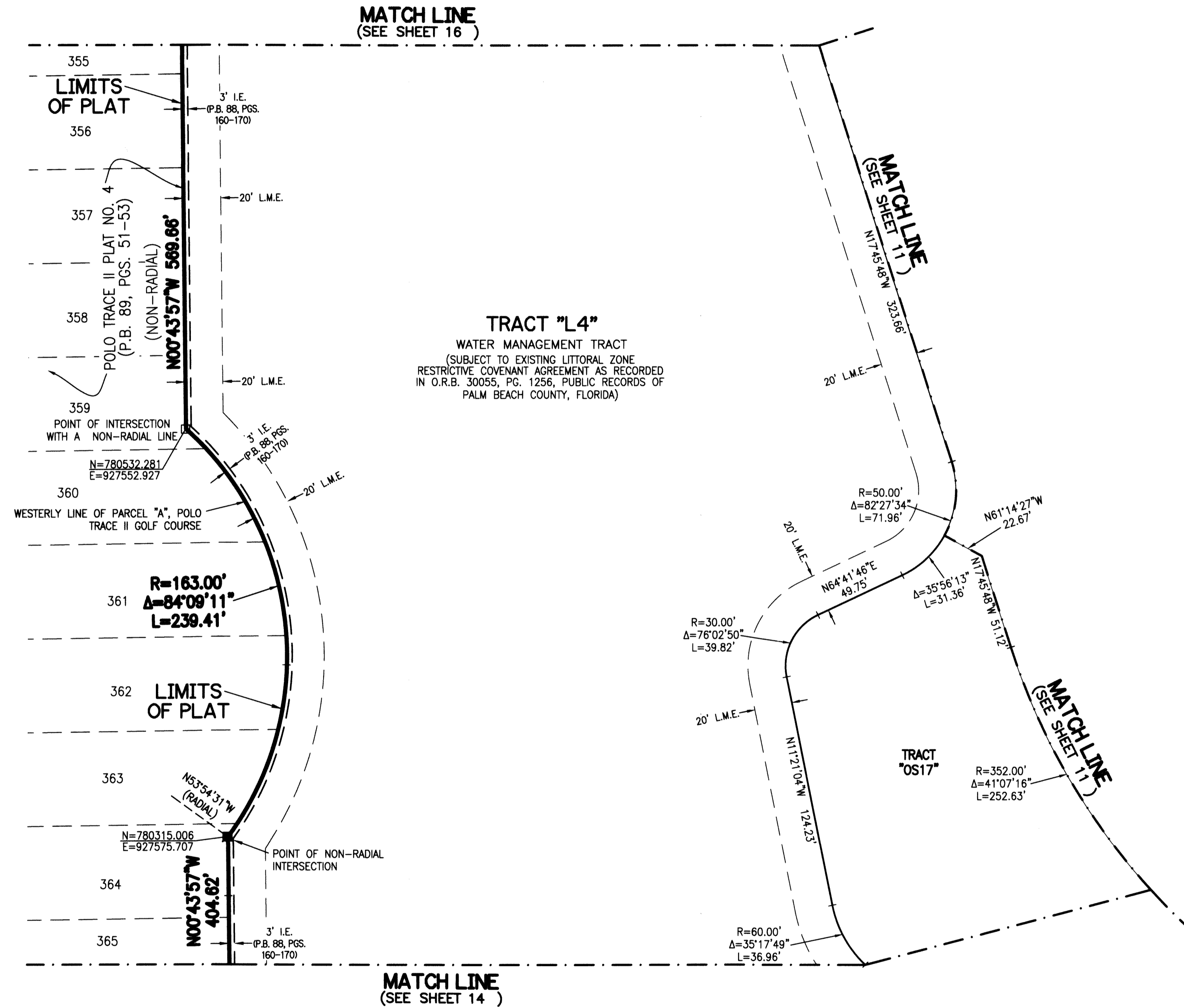
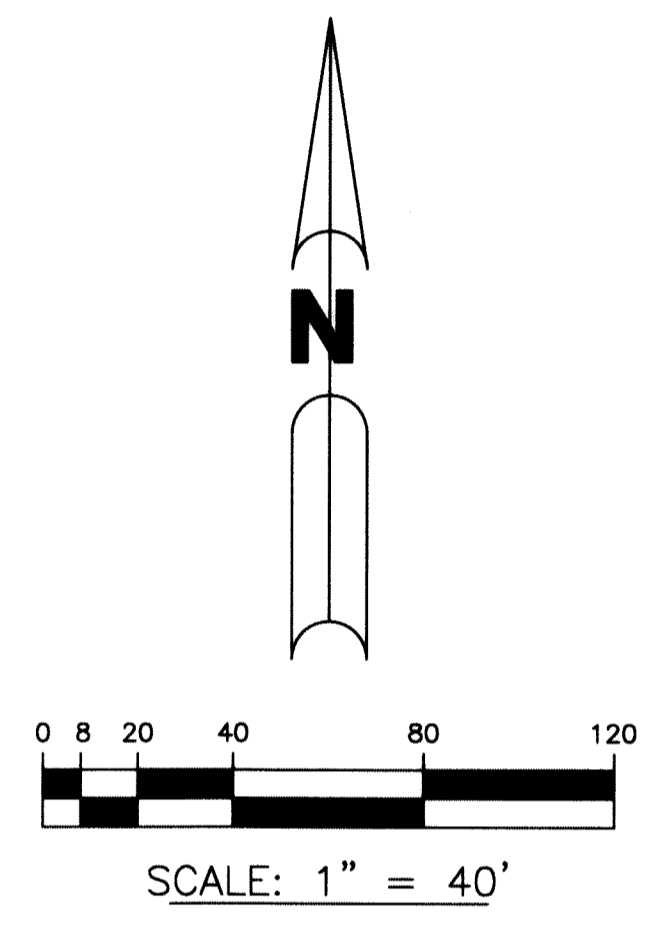


# POLO TRACE II PUD PLAT NO. 5

BEING A REPLAT OF A PORTION OF PARCEL "A" AND ALL OF THE WATER MANAGEMENT TRACT ACCORDING TO POLO TRACE II GOLF COURSE, AS RECORDED IN PLAT BOOK 88 AT PAGES 160 THROUGH 170, A REPLAT OF A PORTION OF TRACT O-2 AND ALL OF TRACT S-1 (POLO TRACE DRIVE) ACCORDING TO POLO TRACE II PLAT NO. 1, AS RECORDED IN PLAT BOOK 75 AT PAGES 193 THROUGH 204, A REPLAT OF ALL OF TRACTS "A", "B" AND "C" ACCORDING TO POLO TRACE II PLAT NO. 2, AS RECORDED IN PLAT BOOK 77 AT PAGES 76 THROUGH 77 AND A REPLAT OF ALL OF TRACTS R-1 AND O-1 ACCORDING TO POLO TRACE II PLAT NO. 3 AS RECORDED IN PLAT BOOK 83 AT PAGES 1 THROUGH 3, ALL OF THE PUBLIC RECORDS OF PALM BEACH COUNTY, FLORIDA AND LYING IN SECTION 9, TOWNSHIP 46 SOUTH, RANGE 42 EAST, PALM BEACH COUNTY, FLORIDA,  
SHEET 15 OF 18

126



**LEGEND:**

- - SET PERMANENT REFERENCE MONUMENT  
4"x4" CONCRETE MONUMENT WITH  
1.5" DISK STAMPED P.R.M. L.B. #7741  
UNLESS OTHERWISE NOTED.
  - - FOUND PERMANENT REFERENCE MONUMENT  
4"x4" CONCRETE MONUMENT WITH  
1.5" DISK STAMPED P.R.M. L.B. #4431
  - - SET PERMANENT CONTROL POINT  
NAIL WITH 1.25" DISK STAMPED L.B. #7741
  - - FOUND PERMANENT CONTROL POINT  
NAIL WITH 1.25" DISK STAMPED L.B. #7741
  - AGR - AGRICULTURAL
  - Δ - DELTA ANGLE
  - B.E. - BUFFER EASEMENT
  - BLK - BLOCK
  - CB - CHORD BEARING
  - CH - CHORD DISTANCE
  - C - CENTERLINE
  - D.B. - DEED BOOK
  - D.E. - PRIVATE DRAINAGE EASEMENT
  - F.P.L. - FLORIDA POWER & LIGHT
  - I.E. - IRRIGATION EASEMENT
  - L - ARC LENGTH
  - L.A.E. - LIMITED ACCESS EASEMENT
  - L.M.A.E. - LAKE MAINTENANCE ACCESS EASEMENT
  - L.M.E. - LAKE MAINTENANCE EASEMENT
  - L.W.D. - LAKE WORTH DRAINAGE DISTRICT
  - N.R. - NOT RADIAL
  - N.T.S. - NOT TO SCALE
  - O.R.B. - OFFICIAL RECORD BOOK
  - O.E. - MAINTENANCE & ROOF OVERHANG EASEMENT
  - P.B.C.U.E. - PALM BEACH COUNTY UTILITY EASEMENT
  - P.B. - PLAT BOOK
  - P.C. - POINT OF CURVATURE
  - P.C.P. - PERMANENT CONTROL POINT
  - P.D.E. - PUBLIC DRAINAGE EASEMENT
  - PGS. - PAGES
  - P.O.B. - POINT OF BEGINNING
  - P.C. - POINT OF COMPOUND CURVATURE
  - P.O.C. - POINT OF COMMENCEMENT
  - PI - POINT OF INTERSECTION
  - PRC - POINT OF REVERSE CURVATURE
  - PT - POINT OF TANGENCY
  - P.S.M. - PROFESSIONAL SURVEYOR AND MAPPER
  - RAD - RADIAL
  - R/W - RIGHT-OF-WAY
  - R.D.&D. - ROAD, DYKE AND DITCH RESERVATION
  - SET IRC - SET 5/8" IRON ROD WITH CAP STAMPED  
P.R.M. L.B.#7741
  - S.T. - SURVEY TIE
  - TYP. - TYPICAL
  - U.E. - UTILITY EASEMENT
- SECTION 31-46-42 - SECTION 31, TOWNSHIP 46 SOUTH, RANGE 42 EAST  
SECTION 32-46-42 - SECTION 32, TOWNSHIP 46 SOUTH, RANGE 42 EAST  
N=779831.147  
E=928508.752 - STATE PLANE COORDINATE VALUE

**NOTE:**  
COORDINATES SHOWN ARE GRID COORDINATES DATUM = NAD 83 (1990 ADJUSTMENT)  
ZONE = FLORIDA EAST ZONE  
LINEAR UNIT = U.S. SURVEY FEET  
COORDINATE SYSTEM = 1983 STATE PLANE TRANSVERSE MERCATOR PROJECTION  
ALL DISTANCES ARE GROUND  
SCALE FACTOR = 1.0000258  
PLAT BEARING = GRID BEARING  
GROUND DISTANCE X SCALE FACTOR = GRID DISTANCE

**NOTE:**  
THE ABANDONMENT OF DRAINAGE, UTILITY, WELL SITE AND SEWER EASEMENTS LYING WITHIN THIS PLAT, ACCORDING TO PALM BEACH COUNTY RESOLUTION NUMBER R-2018-2059, IS RECORDED IN OFFICIAL RECORDS BOOK 30346, PAGE 626, PUBLIC RECORDS OF PALM BEACH COUNTY, FLORIDA.

THIS INSTRUMENT WAS PREPARED BY  
PERRY C. WHITE, P.S.M. 4213, STATE OF FLORIDA  
SAND & HILLS SURVEYING, INC.  
8461 LAKE WORTH ROAD, SUITE 410  
LAKE WORTH, FLORIDA 33467  
LB-7741

