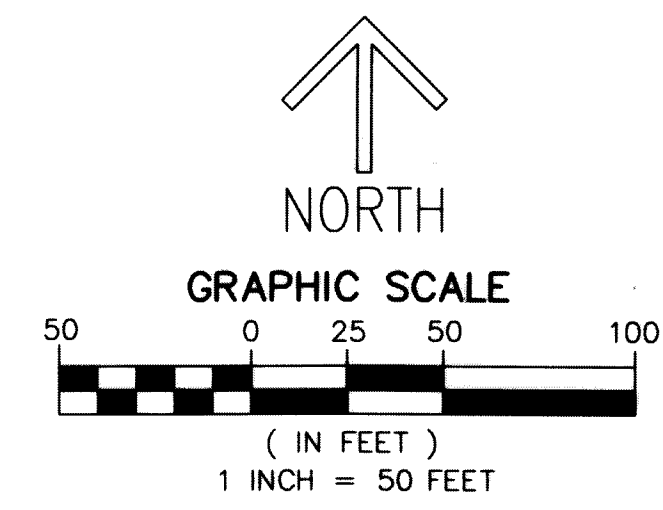


- LEGEND/ABBREVIATIONS**
- € - CENTERLINE
 - Δ - DELTA (CENTRAL ANGLE)
 - AC - ACRES
 - AE - ACCESS EASEMENT
 - CB - CHORD BEARING
 - CD - CHORD DISTANCE
 - CDD = COMMUNITY DEVELOPMENT DISTRICT
 - DE - DRAINAGE EASEMENT
 - DB - DEED BOOK
 - ESMT - EASEMENT
 - L - ARC LENGTH
 - RBE - ROADWAY BUFFER EASEMENTS
 - LB - LICENSED BUSINESS
 - MON - MONUMENT
 - PB - PLAT BOOK
 - PG = PAGE
 - O.R.B. - OFFICIAL RECORD BOOK
 - FND PBC - FOUND PALM BEACH COUNTY SURVEY MONUMENT
 - PBG - PALM BEACH GARDENS
 - R - RADIUS
 - RB - RADIAL BEARING
 - RW - RIGHT-OF-WAY
 - SF - SQUARE FEET
 - S.F.W.M.D. - SOUTH FLORIDA WATER MANAGEMENT DISTRICT
 - SR - STATE ROAD
 - SUAE - SEACOAST UTILITY AUTHORITY EASEMENT
 - UE - UTILITY EASEMENT
 - PRM - DENOTES PERMANENT REFERENCE MONUMENT
 - 5/8" IRON ROD WITH CAP STAMPED "C&W PRM LB3591"
 - - DENOTES PERMANENT CONTROL POINT

AVENIR

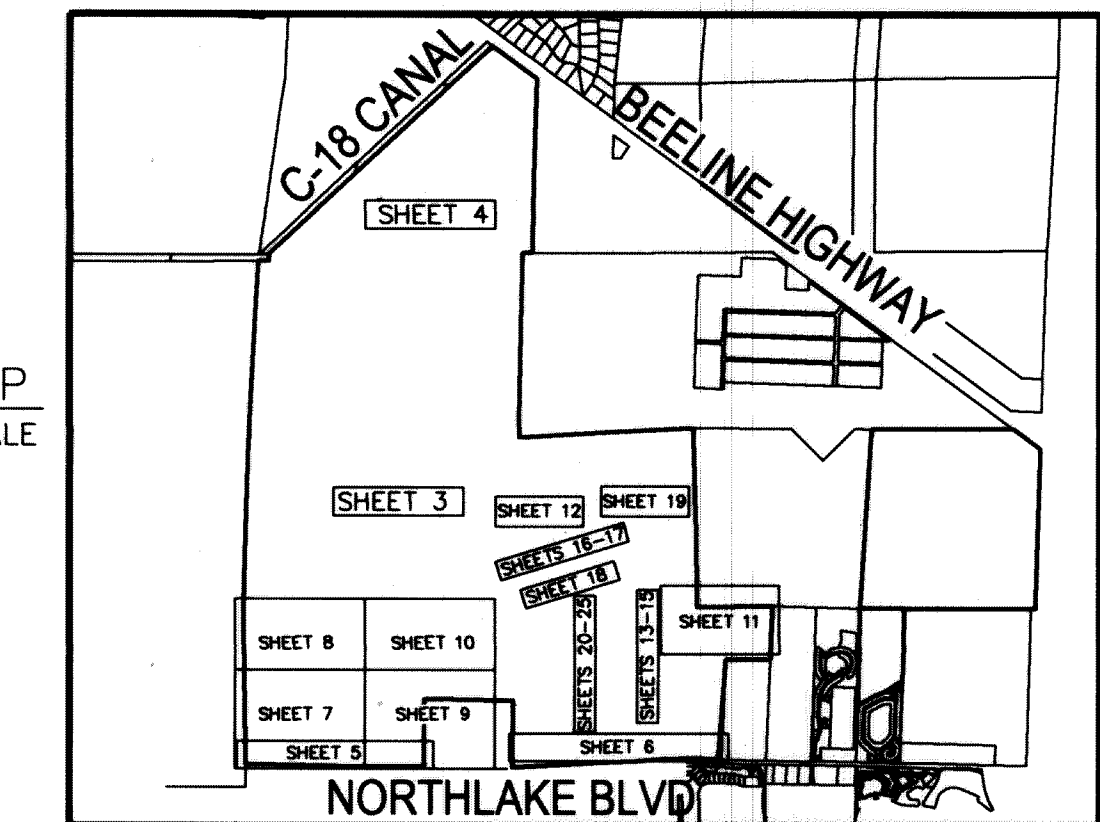
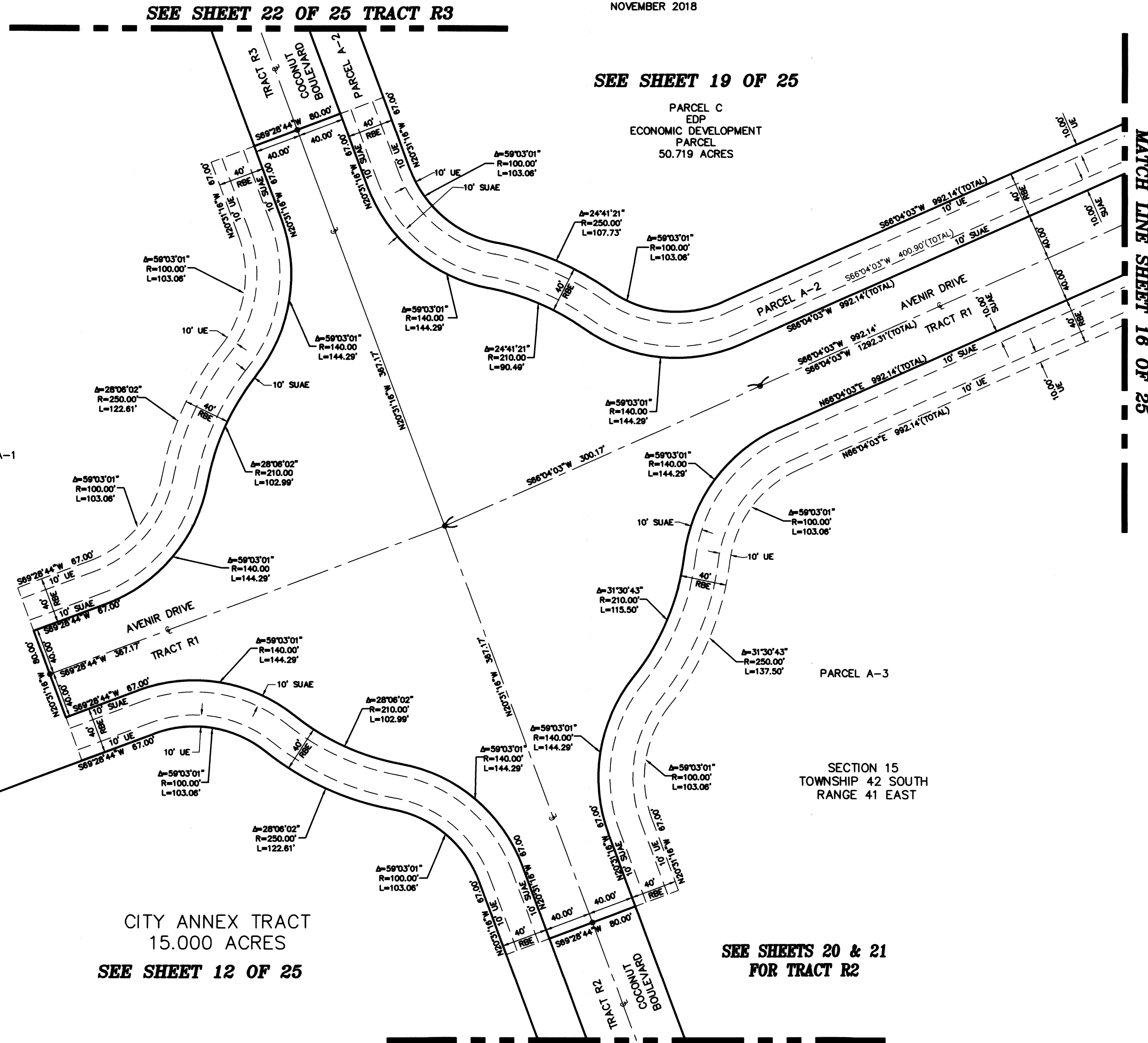
BEING A PORTION OF SECTIONS 28, 32, 33,
TOWNSHIP 41 SOUTH, RANGE 41 EAST,
TOGETHER WITH ALL OF SECTIONS 4, 9 AND 10,
AND A PORTION OF SECTIONS 5, 8, 14, 15, 16 AND 17,
TOWNSHIP 42 SOUTH, RANGE 41 EAST,
CITY OF PALM BEACH GARDENS, PALM BEACH COUNTY, FLORIDA

THIS INSTRUMENT PREPARED BY
RONNIE L. FURNISS
OF
CAULFIELD and WHEELER, INC.
SURVEYORS - ENGINEERS - PLANNERS
7900 GLADES ROAD, SUITE 100
BOCA RATON, FLORIDA 33434 - (561)392-1991
CERTIFICATE OF AUTHORIZATION NO. LB3591
NOVEMBER 2018



101

SHEET 17 OF 25



SHEETS 1-2 COVER
SHEETS 3-4 OVERALL SITE
SHEETS 5-6 DETAIL SOUTH BOUNDARY
SHEETS 7-10 DETAIL CONSERVATION AREAS
SHEET 11 DETAIL PARCEL E/O
PARK/GWC/RECREATION
SHEET 12 DETAIL CITY ANNEX TRACT
& PARCEL A-4
SHEETS 13-18 DETAIL TRACT R1
SHEET 19 DETAIL PARCEL C
SHEETS 20-25 DETAIL TRACTS R2 & R3

CITY ANNEX TRACT
15.000 ACRES
SEE SHEET 12 OF 25

SEE SHEETS 20 & 21
FOR TRACT R2