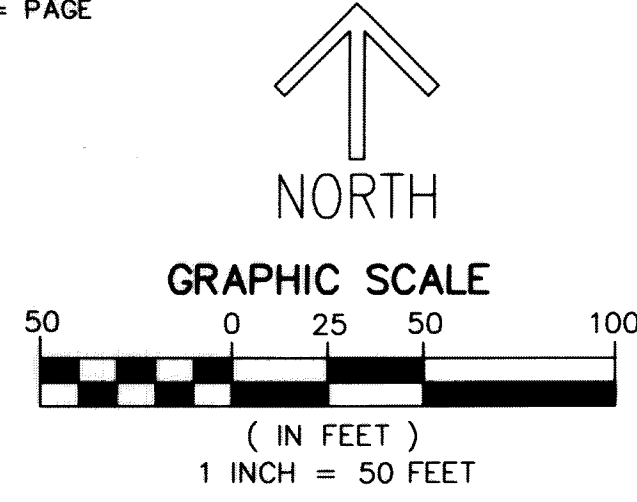


**LEGEND/ABBREVIATIONS**

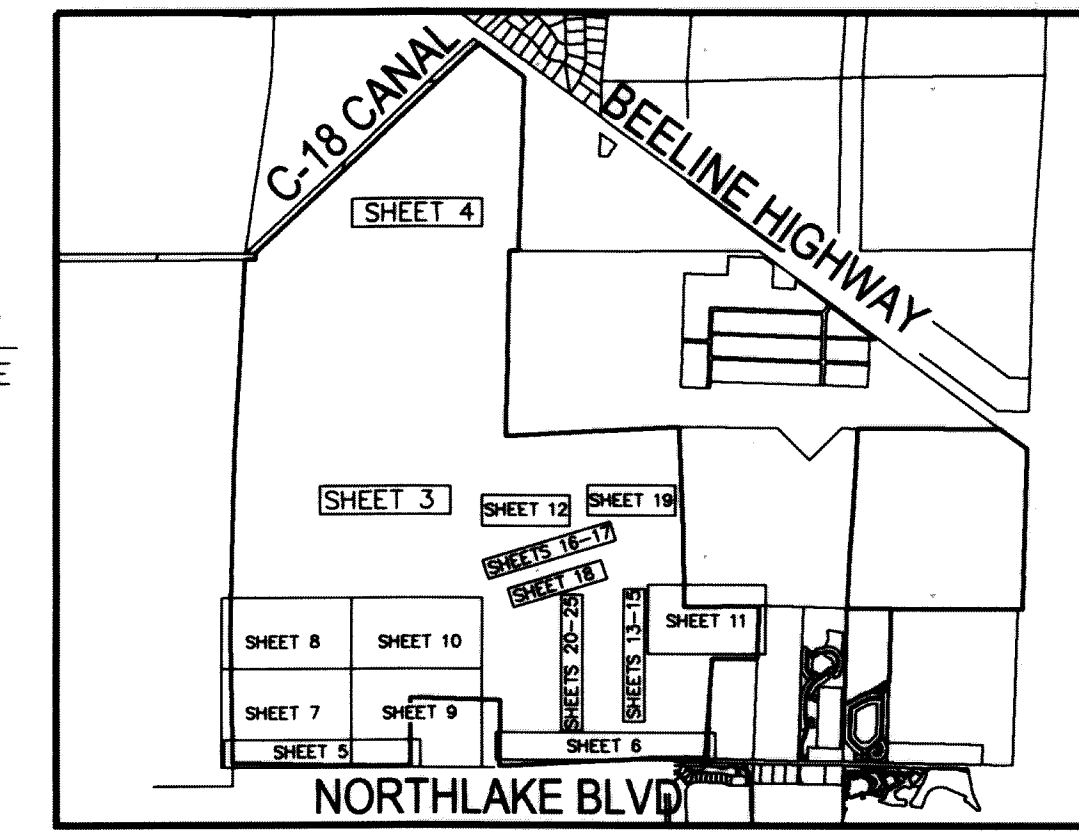
- |                                      |  |
|--------------------------------------|--|
| ε - CENTERLINE                       | O.R.B. - OFFICIAL RECORD BOOK                        |
| Δ - DELTA (CENTRAL ANGLE)            | FND PBC - FOUND PALM BEACH COUNTY SURVEY MONUMENT    |
| AC - ACRES                           | PBG - PALM BEACH GARDENS                             |
| AE - ACCESS EASEMENT                 | R - RADIUS   |
| CB - CHORD BEARING                   | RB - RADIAL BEARING                                  |
| CD - CHORD DISTANCE                  | RW - RIGHT-OF-WAY                                    |
| CDD = COMMUNITY DEVELOPMENT DISTRICT | SF - SQUARE FEET                                     |
| DE - DRAINAGE EASEMENT               | S.F.W.M.D. - SOUTH FLORIDA WATER MANAGEMENT DISTRICT |
| DB - DEED BOOK                       | SR - STATE ROAD                                      |
| ESMT - EASEMENT                      | SUAE - SEACOAST UTILITY AUTHORITY EASEMENT           |
| L - ARC LENGTH                       | UE - UTILITY EASEMENT                                |
| RBE - ROADWAY BUFFER EASEMENTS       | ■ PRM - DENOTES PERMANENT REFERENCE MONUMENT         |
| LB - LICENSED BUSINESS               | ● 5/8" IRON ROD WITH CAP STAMPED "C&W PRM LB3591"    |
| MON - MONUMENT                       | ● - DENOTES PERMANENT CONTROL POINT                  |
| PB = PLAT BOOK                       |  |
| PG = PAGE                            |  |



**AVENIR**  
 BEING A PORTION OF SECTIONS 28, 32, 33,  
 TOWNSHIP 41 SOUTH, RANGE 41 EAST,  
 TOGETHER WITH ALL OF SECTIONS 4, 9 AND 10,  
 AND A PORTION OF SECTIONS 5, 8, 14, 15, 16 AND 17,  
 TOWNSHIP 42 SOUTH, RANGE 41 EAST,  
 CITY OF PALM BEACH GARDENS, PALM BEACH COUNTY, FLORIDA

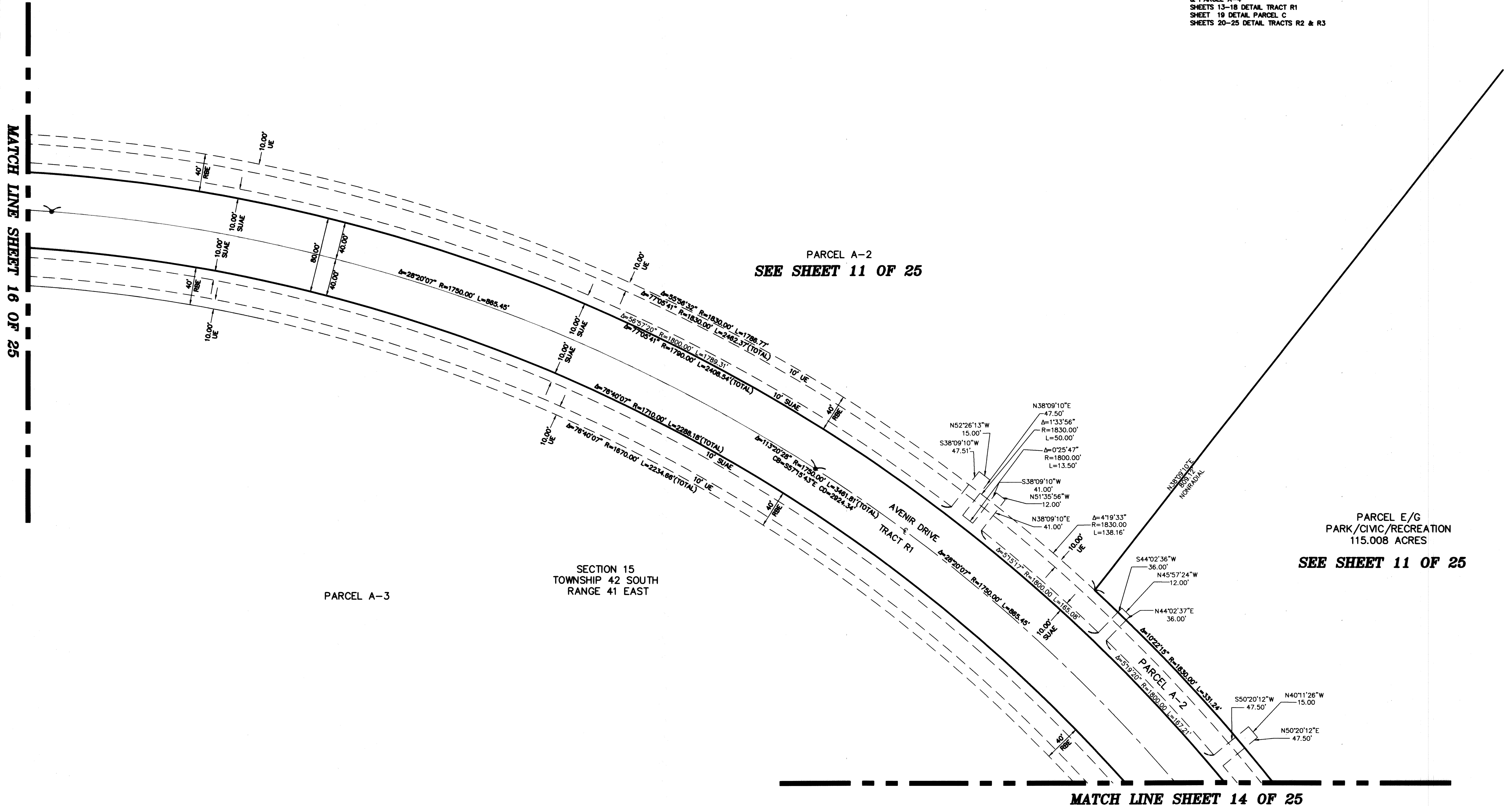
THIS INSTRUMENT PREPARED BY  
 RONNIE L. FURNISS  
 OF  
**CAULFIELD and WHEELER, INC.**  
 SURVEYORS - ENGINEERS - PLANNERS  
 7900 GLADES ROAD, SUITE 100  
 BOCA RATON, FLORIDA 33434 - (561)392-1991  
 CERTIFICATE OF AUTHORIZATION NO. LB3591  
 NOVEMBER 2018

↑  
 NORTH  
 KEY MAP  
 NOT TO SCALE



SHEETS 1-2 COVER  
 SHEETS 3-4 OVERALL SITE  
 SHEETS 5-6 DETAIL SOUTH BOUNDARY  
 SHEETS 7-10 DETAIL CONSERVATION AREAS  
 SHEET 11 DETAIL PARCEL E/G  
 PARK/CIVIC/RECREATION  
 SHEET 12 DETAIL CITY ANNEX TRACT  
 & PARCEL A-4  
 SHEETS 13-18 DETAIL TRACT R1  
 SHEETS 19 DETAIL PARCEL C  
 SHEETS 20-25 DETAIL TRACTS R2 & R3

**SHEET 15 OF 25**



MATCH LINE SHEET 16 OF 25

MATCH LINE SHEET 14 OF 25