

# AVENIR

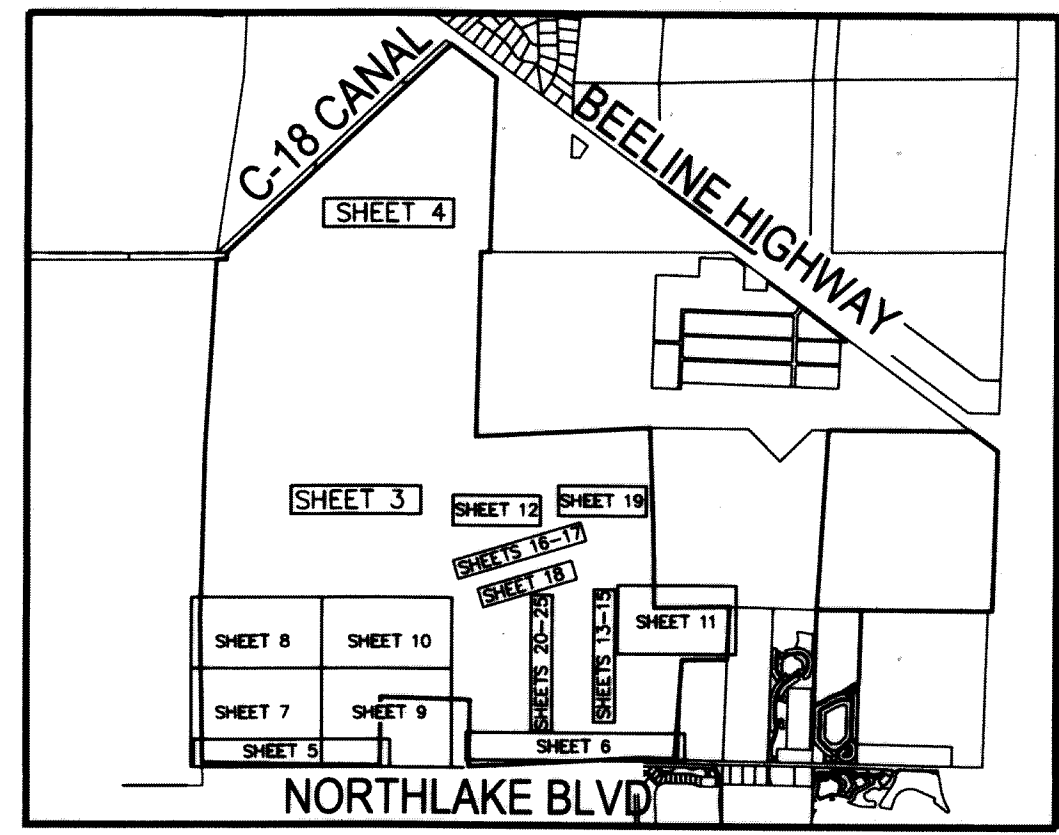
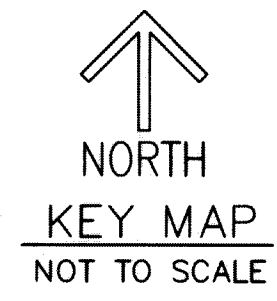
BEING A PORTION OF SECTIONS 28, 32, 33,  
TOWNSHIP 41 SOUTH, RANGE 41 EAST,  
TOGETHER WITH ALL OF SECTIONS 4, 9 AND 10,  
AND A PORTION OF SECTIONS 5, 8, 14, 15, 16 AND 17,  
TOWNSHIP 42 SOUTH, RANGE 41 EAST,  
CITY OF PALM BEACH GARDENS, PALM BEACH COUNTY, FLORIDA

THIS INSTRUMENT PREPARED BY  
RONNIE L. FURNISS

OF  
**CAULFIELD and WHEELER, INC.**  
SURVEYORS - ENGINEERS - PLANNERS  
7900 GLADES ROAD, SUITE 100  
BOCA RATON, FLORIDA 33434 - (561)392-1991  
CERTIFICATE OF AUTHORIZATION NO. LB3591  
NOVEMBER 2018

## LEGEND/ABBREVIATIONS

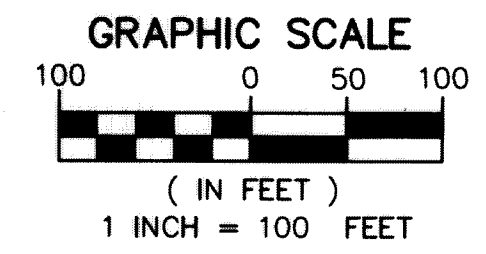
CL - CENTERLINE	O.R.B. - OFFICIAL RECORD BOOK
Δ - DELTA (CENTRAL ANGLE)	FND PBC - FOUND PALM BEACH COUNTY SURVEY MONUMENT
AC - ACRES	PBG - PALM BEACH GARDENS
AE - ACCESS EASEMENT	R - RADIUS
CB - CHORD BEARING	RB - RADIAL BEARING
CD - CHORD DISTANCE	RW - RIGHT-OF-WAY
CDD - COMMUNITY DEVELOPMENT DISTRICT	SF - SQUARE FEET
DE - DRAINAGE EASEMENT	S.F.W.M.D. - SOUTH FLORIDA WATER MANAGEMENT DISTRICT
DB - DEED BOOK	SR - STATE ROAD
ESMT - EASEMENT	SUAE - SEACOAST UTILITY AUTHORITY EASEMENT
L - ARC LENGTH	UE - UTILITY EASEMENT
RBE - ROADWAY BUFFER EASEMENTS	PRM - DENOTES PERMANENT REFERENCE MONUMENT
LB - LICENSED BUSINESS	5/8" IRON ROD WITH CAP STAMPED "C&W PRM LB3591"
MON - MONUMENT	● - DENOTES PERMANENT CONTROL POINT
PB - PLAT BOOK	
PG - PAGE	



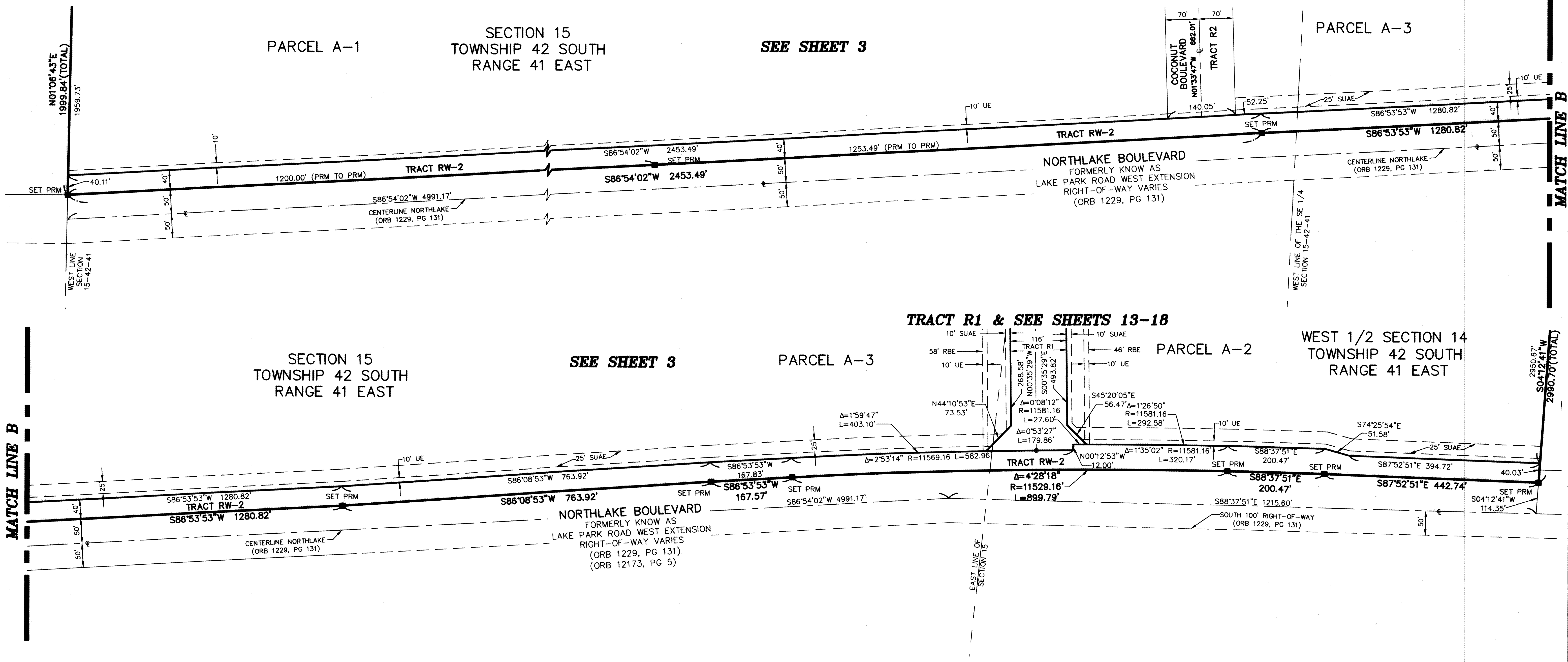
90

SHEETS 1-2 COVER  
SHEETS 3-4 OVERALL SITE  
SHEETS 5-6 DETAIL SOUTH BOUNDARY  
SHEETS 7-10 DETAIL CONSERVATION AREAS  
SHEET 11 DETAIL PARCEL E/G  
PARK/CIVIC/RECREATION  
SHEET 12 DETAIL CITY ANNEX TRACT  
& PARCEL A-4  
SHEETS 13-18 DETAIL TRACT R1  
SHEET 19 DETAIL PARCEL C  
SHEETS 20-25 DETAIL TRACTS R2 & R3

SHEET 6 OF 25



TRACT R2 & R3 SEE SHEETS 20-25



MATCH LINE B

MATCH LINE B

2990.70'(TOTAL)  
S04°12'41\"/>