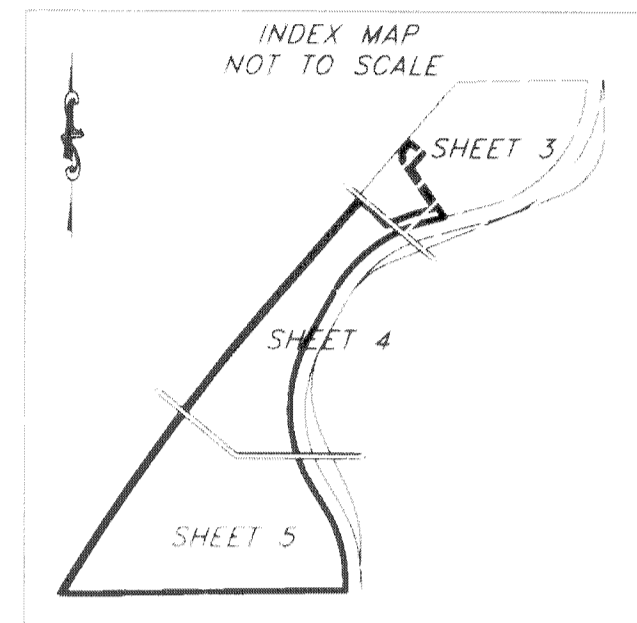


TURNPIKE BUSINESS PARK TRACT "A" REPLAT

BEING A REPLAT OF TRACT "A", OF TURNPIKE BUSINESS PARK, AS RECORDED IN PLAT BOOK 119, PAGES 126 THROUGH 130, INCLUSIVE, OF THE PUBLIC RECORDS OF PALM BEACH COUNTY, FLORIDA, LYING IN SECTION 33, TOWNSHIP 43 SOUTH, RANGE 42 EAST, PALM BEACH COUNTY, FLORIDA.

SHEET 3 OF 5

82



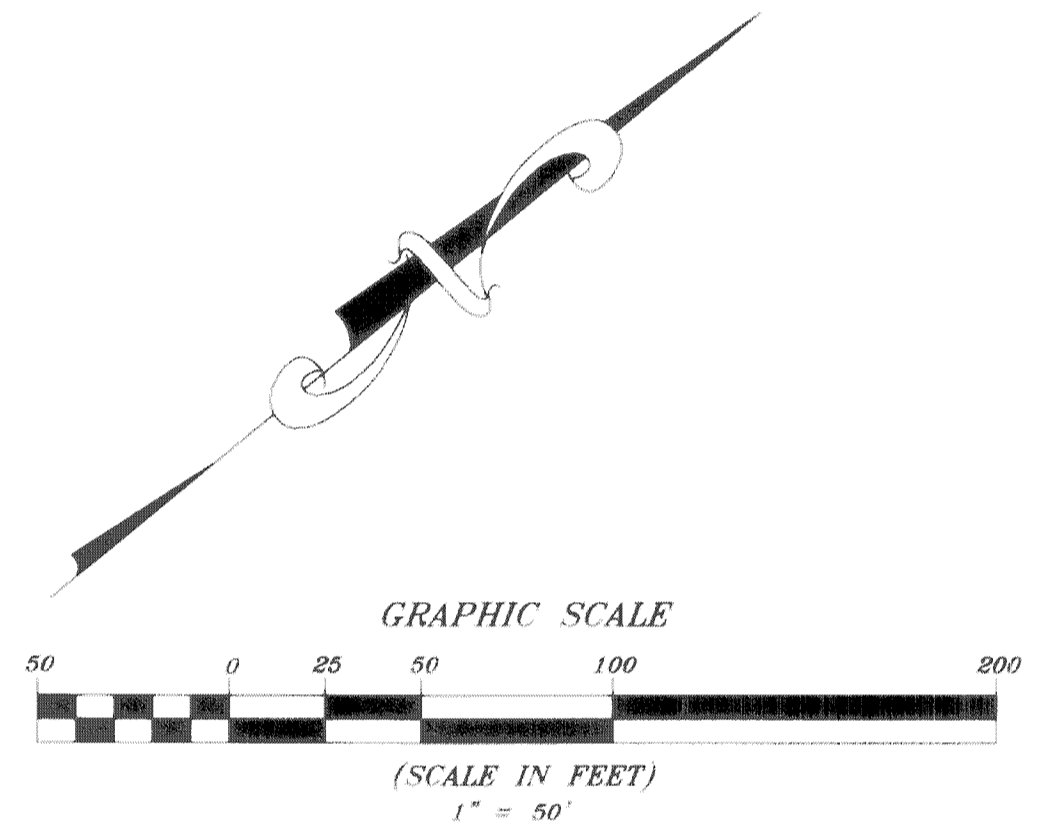
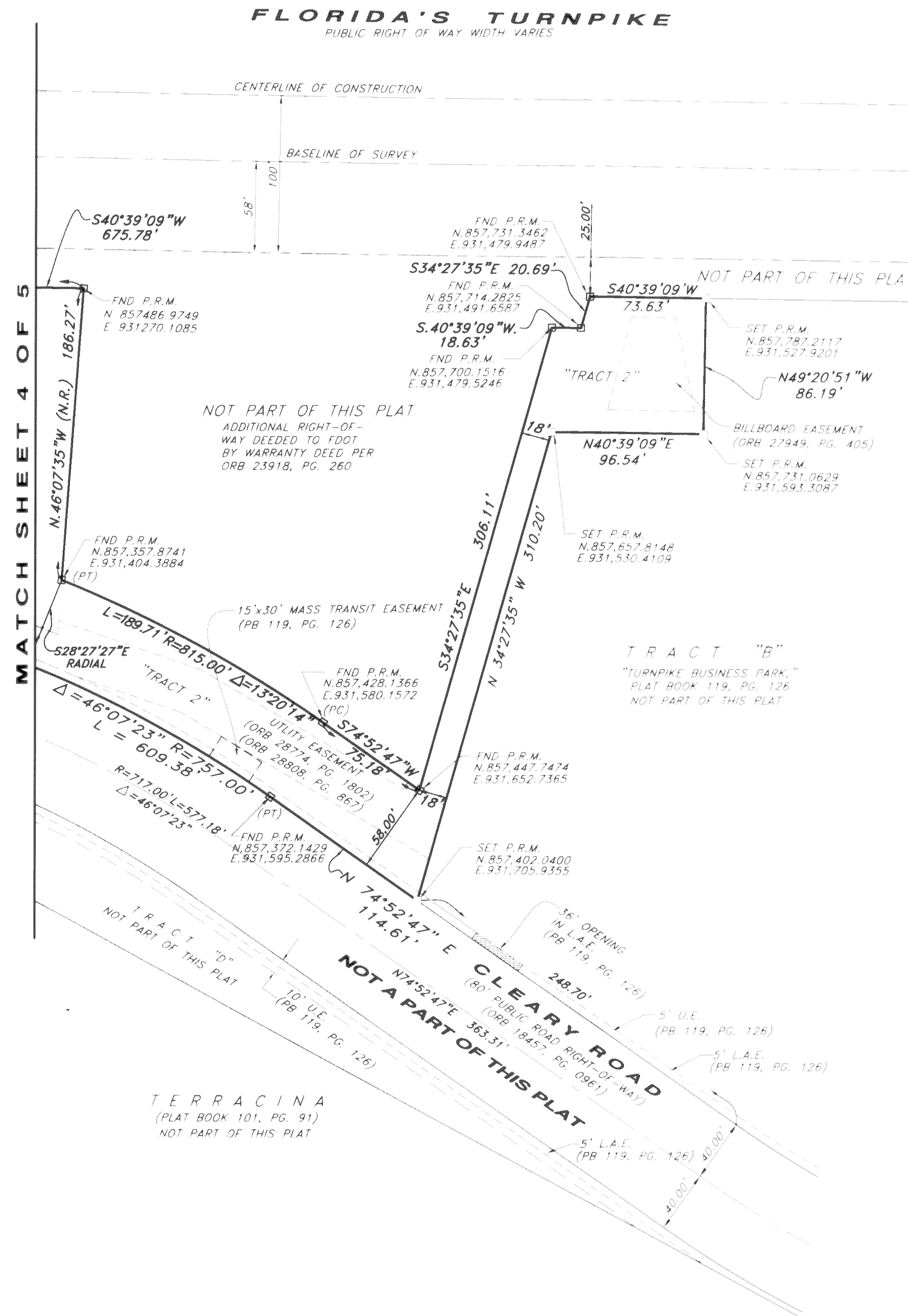
NOTE

COORDINATES SHOWN HEREON REFER TO THE NAD 1983 (1990 ADJUSTMENT) AS READJUSTED BY PALM BEACH COUNTY IN 1998) STATE PLANE TRANSVERSE MERCATOR PROJECTION, ZONE FLORIDA EAST, USING A SCALE FACTOR OF 1.000027931.

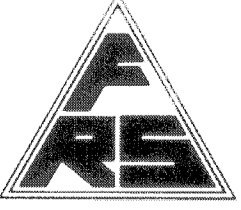
ALL DISTANCES SHOWN HEREON ARE GROUND DISTANCES. (UNLESS OTHERWISE NOTED) GROUND DISTANCE X SCALE FACTOR = GRID DISTANCE

LEGEND

- D.E. = DRAINAGE EASEMENT
- F.D.O.T. = FLORIDA DEPARTMENT OF TRANSPORTATION
- FND = FOUND
- L.A.E. = LIMITED ACCESS EASEMENT
- L.A.E.O. = LIMITED ACCESS EASEMENT OPENING
- L.M.A.E. = LAKE MAINTENANCE ACCESS EASEMENT
- L.P.E. = LITTORAL PLANTING EASEMENT
- ORB = OFFICIAL RECORD BOOK
- Δ = DELTA ANGLE OF CURVE
- R = RADIUS OF CURVE
- L = LENGTH OF CURVE
- L.W.D.D. = LAKE WORTH DRAINAGE DISTRICT
- (PC) = POINT OF CURVATURE
- (PT) = POINT OF TANGENCY
- PB = PLAT BOOK
- PG = PAGE
- P.R.M. = PERMANENT REFERENCE MONUMENT
- R/W = RIGHT-OF-WAY
- U.E. = UTILITY EASEMENT
- (N.R.) = NON RADIAL
- = SET SCREW AND DISK
- STAMPED "FRS & ASSOCIATES INC.", "RLS 4817", "LB 4241", "PRM" REPLACING FND, NAIL & DISK STAMPED "FRS LB 4241"
- = FND 4"x4" CONCRETE "PRM" PERMANENT REFERENCE MONUMENT STAMPED "FRS & ASSOCIATES INC.", "RLS 4817", "LB 4241", "PRM"
- = SET 4"x4" CONCRETE "PRM" PERMANENT REFERENCE MONUMENT STAMPED "FRS & ASSOCIATES INC.", "RLS 4817", "LB 4241", "PRM"



THIS INSTRUMENT PREPARED BY GARY P. WILLIAMS, P.S.M. IN THE OFFICES OF F.R.S. & ASSOCIATES, INC., 2257 VISTA PARKWAY, SUITE 4, WEST PALM BEACH, FLORIDA. PHONE: (561) 478-7178

 F.R.S. & ASSOCIATES, INC. LAND SURVEYORS AND MAPPERS CERTIFICATE OF AUTHORIZATION NO. LB 4241 2257 VISTA PARKWAY, SUITE 4 WEST PALM BEACH, FLORIDA 33411 PHONE (561) 478-7178 FAX (561) 478-7922		
SCALE: 1"=50'	DRAWN BY: D. KUPSICK	FIELD BOOK/PAGE
DATE: 04/20/18	APPR. BY: G.P. WILLIAMS	M2/12-21
TURNPIKE BUSINESS PARK		JOB NUMBER:
SECTION 33, TOWNSHIP 43 SOUTH, RANGE 42 EAST		D 08-020.A1
PALM BEACH COUNTY, FLORIDA		SHEET 3 OF 5