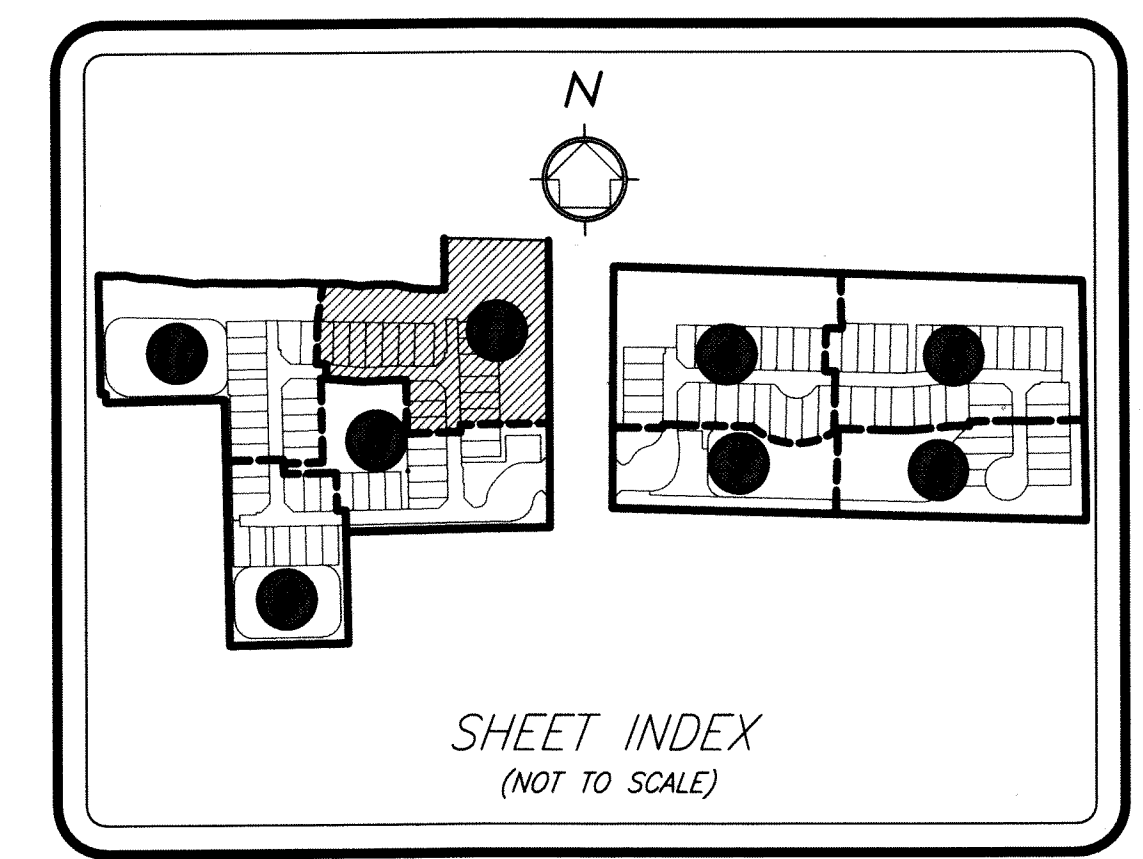


POINTE OF WOODS P.U.D.

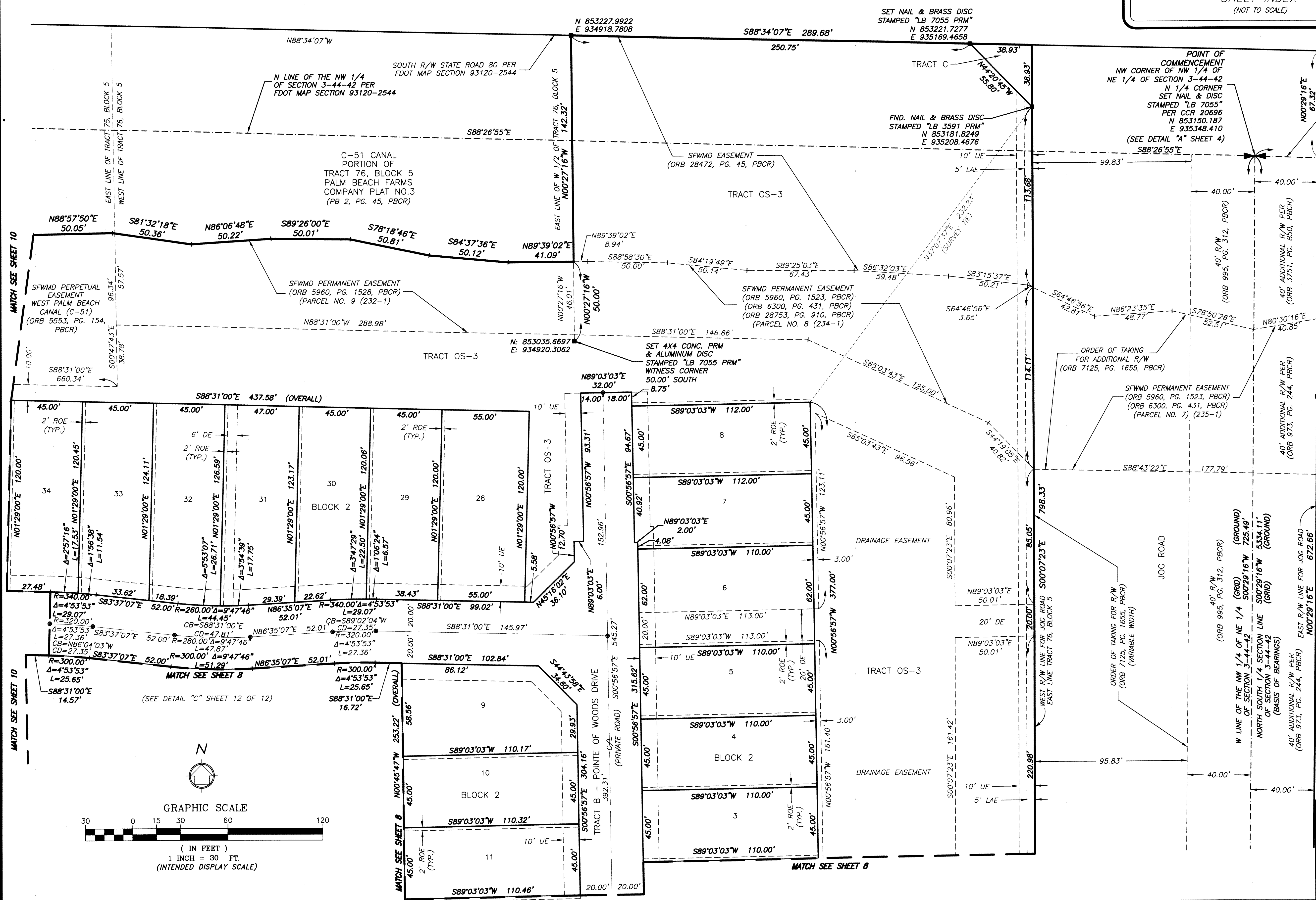
BEING A REPLAT OF PORTIONS OF TRACT 1 AND TRACT 2, BLOCK 13, AND TRACT 75 AND TRACT 76, BLOCK 5, PALM BEACH FARMS COMPANY PLAT NO. 3, RECORDED IN PLAT BOOK 2, PAGES 45 THROUGH 54, OF THE PALM BEACH COUNTY PUBLIC RECORDS, TOGETHER WITH A PORTION OF THE NE 1/4 SECTION 3, TOWNSHIP 44 SOUTH, RANGE 42 EAST, SAID LANDS LYING AND SITUATE IN SECTION 3, TOWNSHIP 44 SOUTH, RANGE 42 EAST, PALM BEACH COUNTY, FLORIDA.

STATE ROAD 80 (SOUTHERN BOULEVARD)
FDOT MAP SECTION 93120-2544



64

SHEET 11 OF 12 SHEETS



- LEGEND:**
- AC = ACRES
 - CB = CHORD BEARING
 - CD = CHORD DISTANCE
 - C/L = CENTER LINE
 - CCR = CERTIFIED CORNER RECORD
 - CONC. = CONCRETE
 - DE = DRAINAGE EASEMENT
 - FND. = FOUND
 - FDOT = FLORIDA DEPARTMENT OF TRANSPORTATION
 - FPLE = FLORIDA POWER & LIGHT EASEMENT
 - LB = LICENSED BUSINESS
 - LME = LAKE MAINTENANCE EASEMENT
 - LMAE = LAKE MAINTENANCE ACCESS EASEMENT
 - LSE = LIFT STATION EASEMENT
 - ORB = OFFICIAL RECORDS BOOK
 - PG. = PAGE
 - PDE = PUBLIC DRAINAGE EASEMENT
 - PBCR = PALM BEACH COUNTY RECORDS
 - PBCUE = PALM BEACH COUNTY UTILITY EASEMENT
 - PB = PLAT BOOK
 - = PERMANENT CONTROL POINT (PCP), SET NAIL & BRASS DISC STAMPED "LB 7055"
 - PRM = PERMANENT REFERENCE MONUMENT
 - (R) = RADIAL
 - ROE = ROOF OVERHANG EASEMENT
 - R/W = RIGHT-OF-WAY
 - SFWM = SOUTH FLORIDA WATER MANAGEMENT DISTRICT (TYP.)
 - UE = UTILITY EASEMENT
 - = SET 4"x4" CONCRETE PRM & ALUMINUM DISC STAMPED "LB 7055 PRM" UNLESS OTHERWISE NOTED
 - ① = SHEET NUMBER
 - SECTION 3-44-42 = SECTION 3, TOWNSHIP 44 SOUTH, RANGE 42 EAST
- NOTE:**
- COORDINATES SHOWN ARE GRID COORDINATES
 - DATUM - NAD 83 (1990 ADJUSTMENT)
 - ZONE = FLORIDA EAST ZONE
 - LINEAR UNIT = U.S. SURVEY FEET
 - COORDINATE SYSTEM = 1983 STATE PLANE TRANSVERSE MERCATOR PROJECTION
 - ALL DISTANCES ARE GROUND
 - SCALE FACTOR = 1.000030541
 - PLAT BEARING = GRID BEARING
 - GROUND DISTANCE X SCALE FACTOR = GRID DISTANCE

