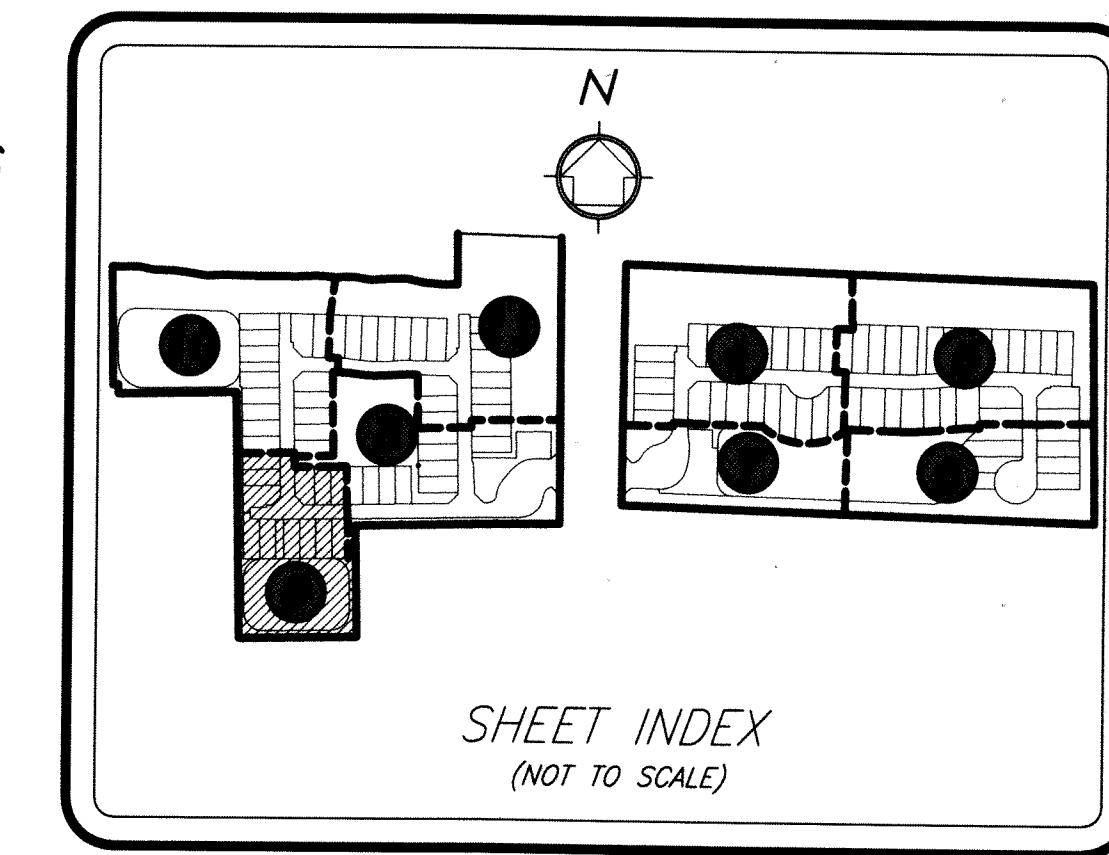


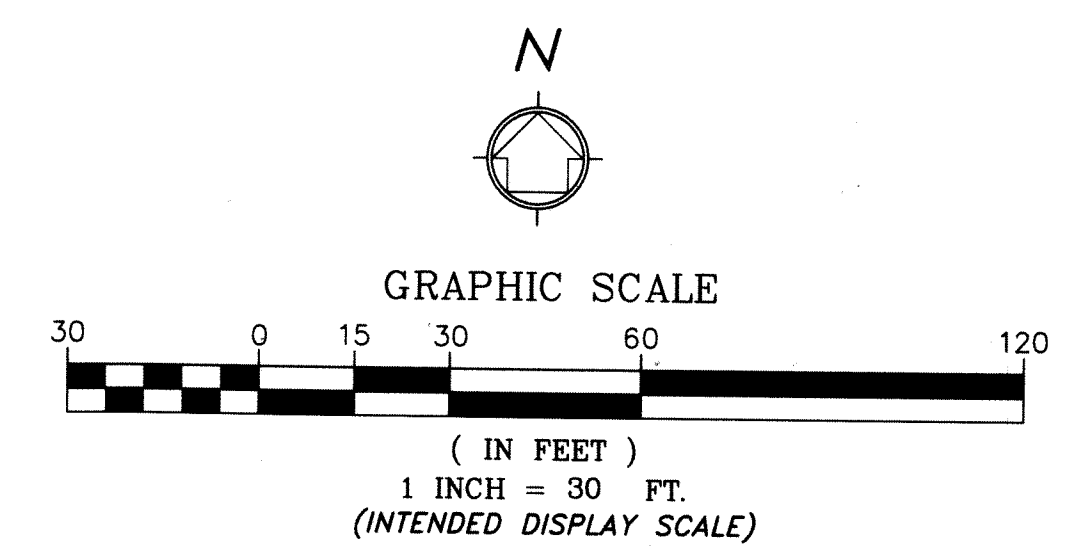
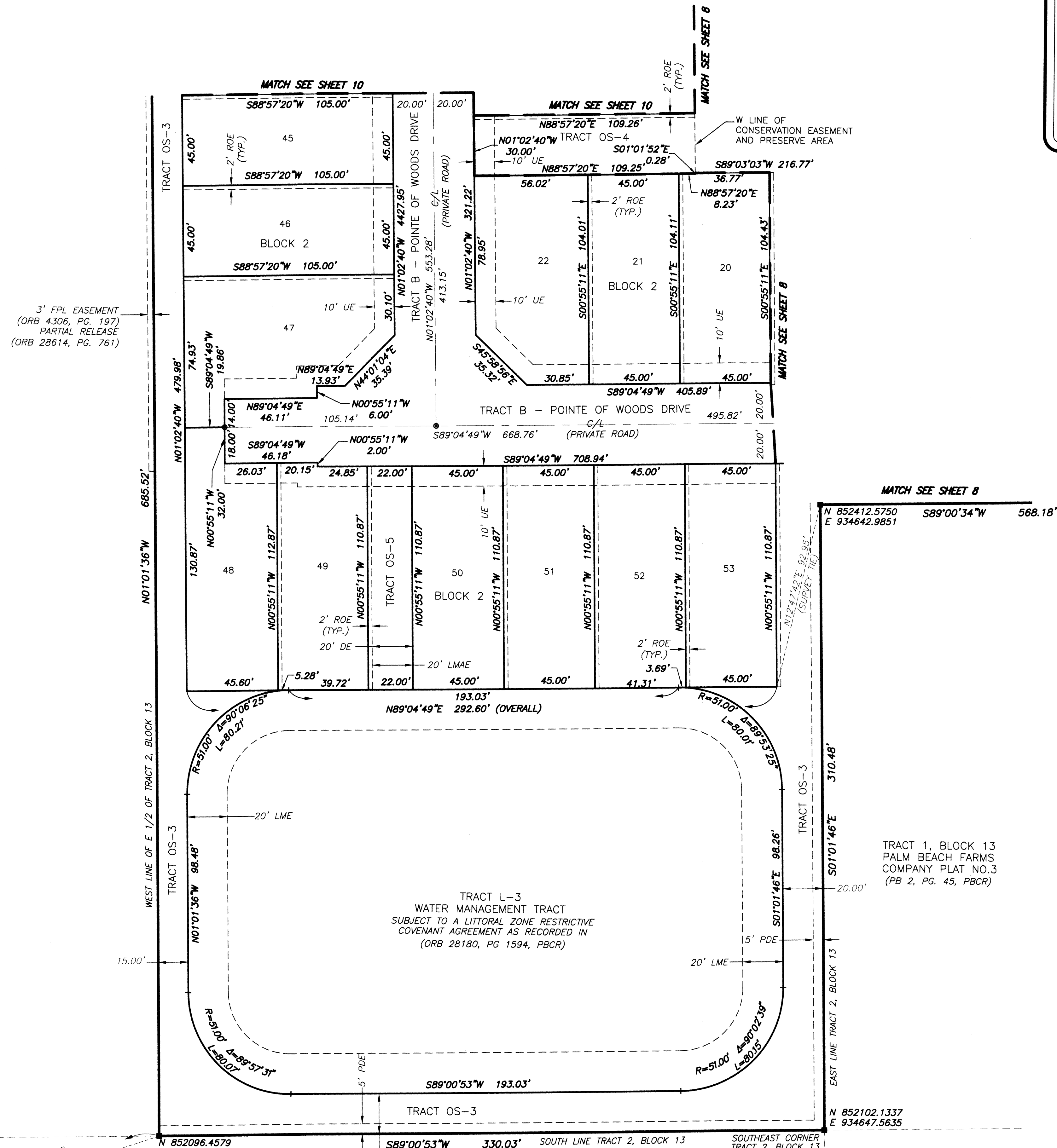
# POINTE OF WOODS P.U.D.

BEING A REPLAT OF PORTIONS OF TRACT 1 AND TRACT 2, BLOCK 13, AND TRACT 75 AND TRACT 76, BLOCK 5, PALM BEACH FARMS COMPANY PLAT NO. 3, RECORDED IN PLAT BOOK 2, PAGES 45 THROUGH 54, OF THE PALM BEACH COUNTY PUBLIC RECORDS, TOGETHER WITH A PORTION OF THE NE 1/4 SECTION 3, TOWNSHIP 44 SOUTH, RANGE 42 EAST, SAID LANDS LYING AND SITUATE IN SECTION 3, TOWNSHIP 44 SOUTH, RANGE 42 EAST, PALM BEACH COUNTY, FLORIDA.



62

SHEET 9 OF 12 SHEETS



- LEGEND:**
- AC = ACRES
  - CB = CHORD BEARING
  - CD = CHORD DISTANCE
  - C/L = CENTER LINE
  - CCR = CERTIFIED CORNER RECORD
  - CONC. = CONCRETE
  - DE = DRAINAGE EASEMENT
  - FND. = FOUND
  - FDOT = FLORIDA DEPARTMENT OF TRANSPORTATION
  - FPLE = FLORIDA POWER & LIGHT EASEMENT
  - LB = LICENSED BUSINESS
  - LME = LAKE MAINTENANCE EASEMENT
  - LMAE = LAKE MAINTENANCE ACCESS EASEMENT
  - LSE = LIFT STATION EASEMENT
  - ORB = OFFICIAL RECORDS BOOK
  - PG. = PAGE
  - PDE = PUBLIC DRAINAGE EASEMENT
  - PBCR = PALM BEACH COUNTY RECORDS
  - PBCUE = PALM BEACH COUNTY UTILITY EASEMENT
  - PB = PLAT BOOK
  - = PERMANENT CONTROL POINT (PCP), SET NAIL & BRASS DISC STAMPED "LB 7055"
  - PRM = PERMANENT REFERENCE MONUMENT
  - (R) = RADIAL
  - ROE = ROOF OVERHANG EASEMENT
  - R/W = RIGHT-OF-WAY
  - SFWMD = SOUTH FLORIDA WATER MANAGEMENT DISTRICT
  - (TYP.) = TYPICAL
  - UE = UTILITY EASEMENT
  - = SET 4"x4" CONCRETE PRM & ALUMINUM DISC STAMPED "LB 7055 PRM" UNLESS OTHERWISE NOTED
  - ① = SHEET NUMBER
- SECTION 3-44-42 = SECTION 3,  
TOWNSHIP 44 SOUTH, RANGE 42 EAST

**NOTE:**

COORDINATES SHOWN ARE GRID COORDINATES  
 DATUM - NAD 83 (1990 ADJUSTMENT)  
 ZONE = FLORIDA EAST ZONE  
 LINEAR UNIT = U.S. SURVEY FEET  
 COORDINATE SYSTEM = 1983 STATE PLANE  
 TRANSVERSE MERCATOR PROJECTION  
 ALL DISTANCES ARE GROUND  
 SCALE FACTOR = 1.000030541  
 PLAT BEARING = GRID BEARING  
 GROUND DISTANCE X SCALE FACTOR = GRID DISTANCE

**WGI**

2035 Vista Parkway, West Palm Beach, FL 33411  
 Phone No. 866.909.2220 www.wginc.com  
 Cert No. 6091 - LB No. 7055

THIS INSTRUMENT WAS PREPARED BY ERIC R. MATTHEWS, P.S.M.  
 PROFESSIONAL SURVEYOR AND MAPPER, LICENSE NO. 6717  
 FOR THE FIRM: WANTMAN GROUP, INC.