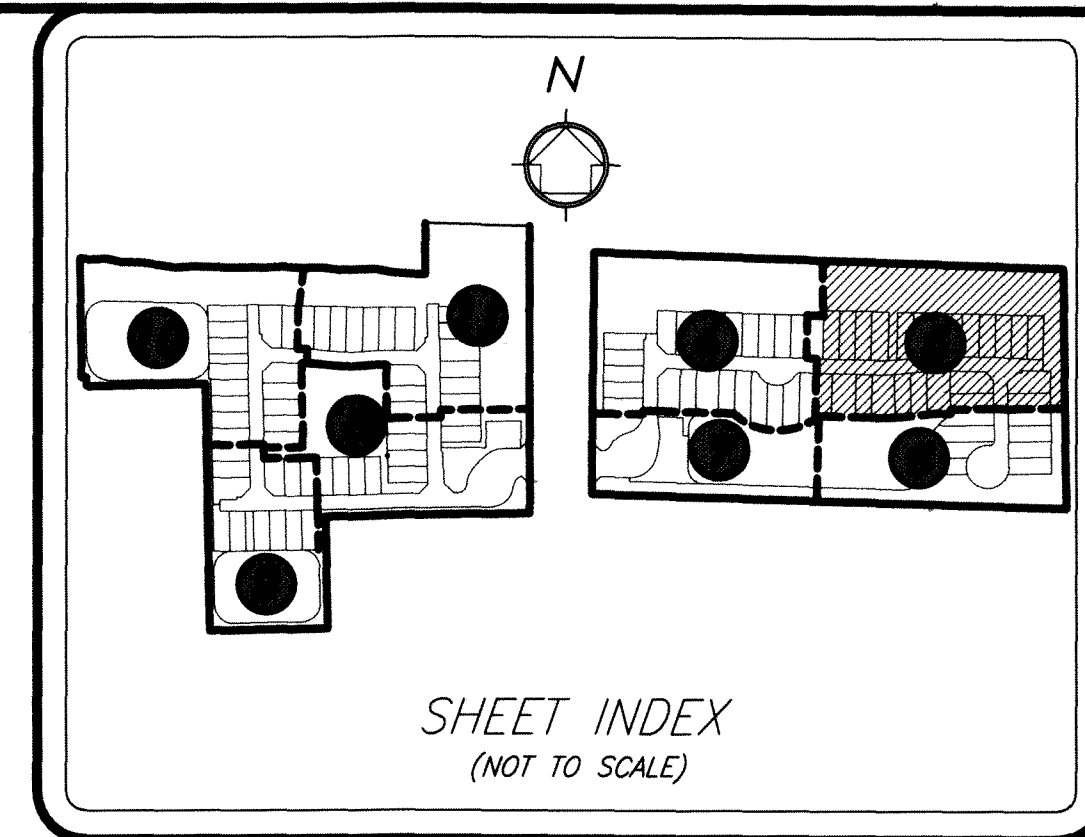


POINTE OF WOODS P.U.D.

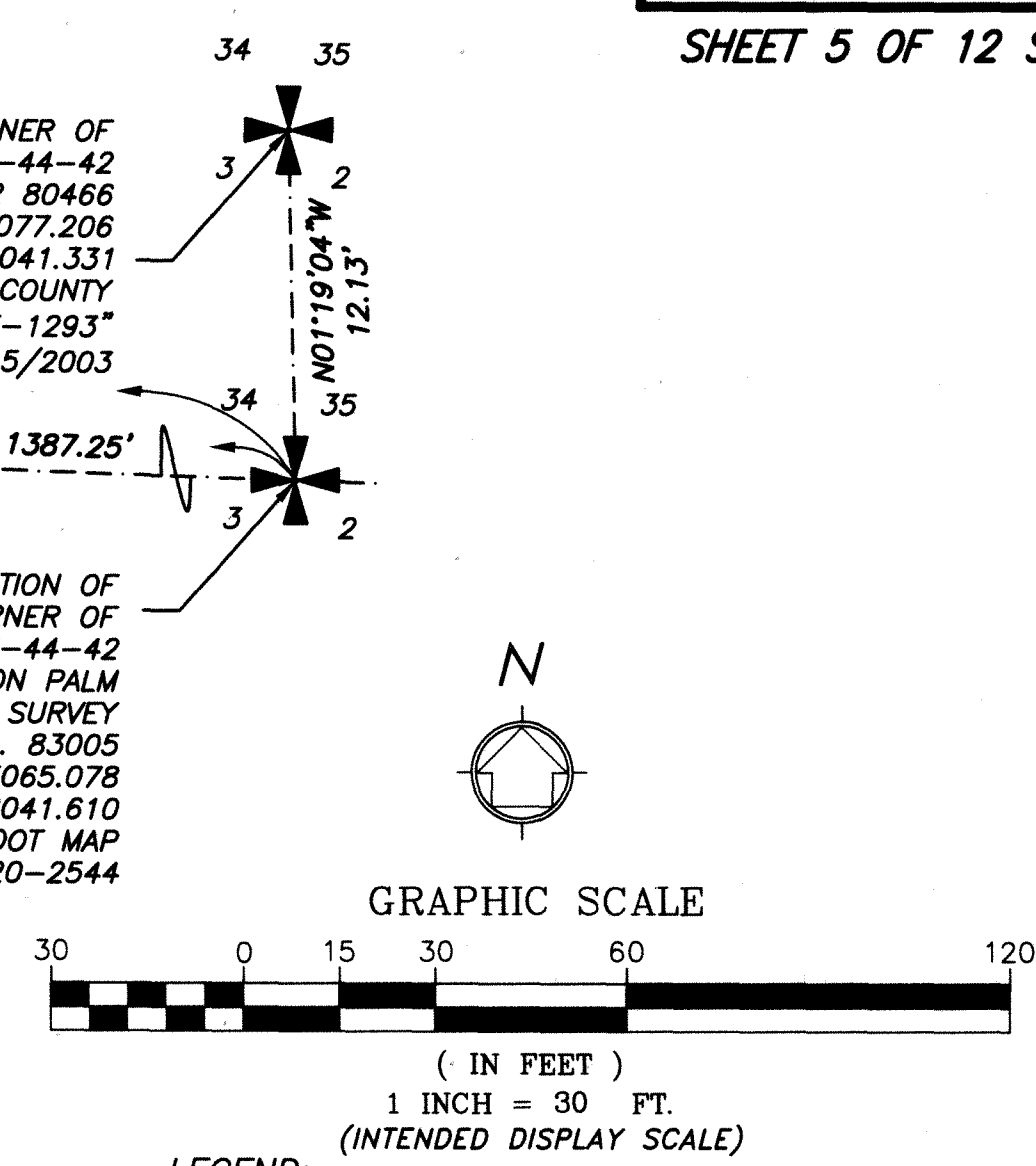
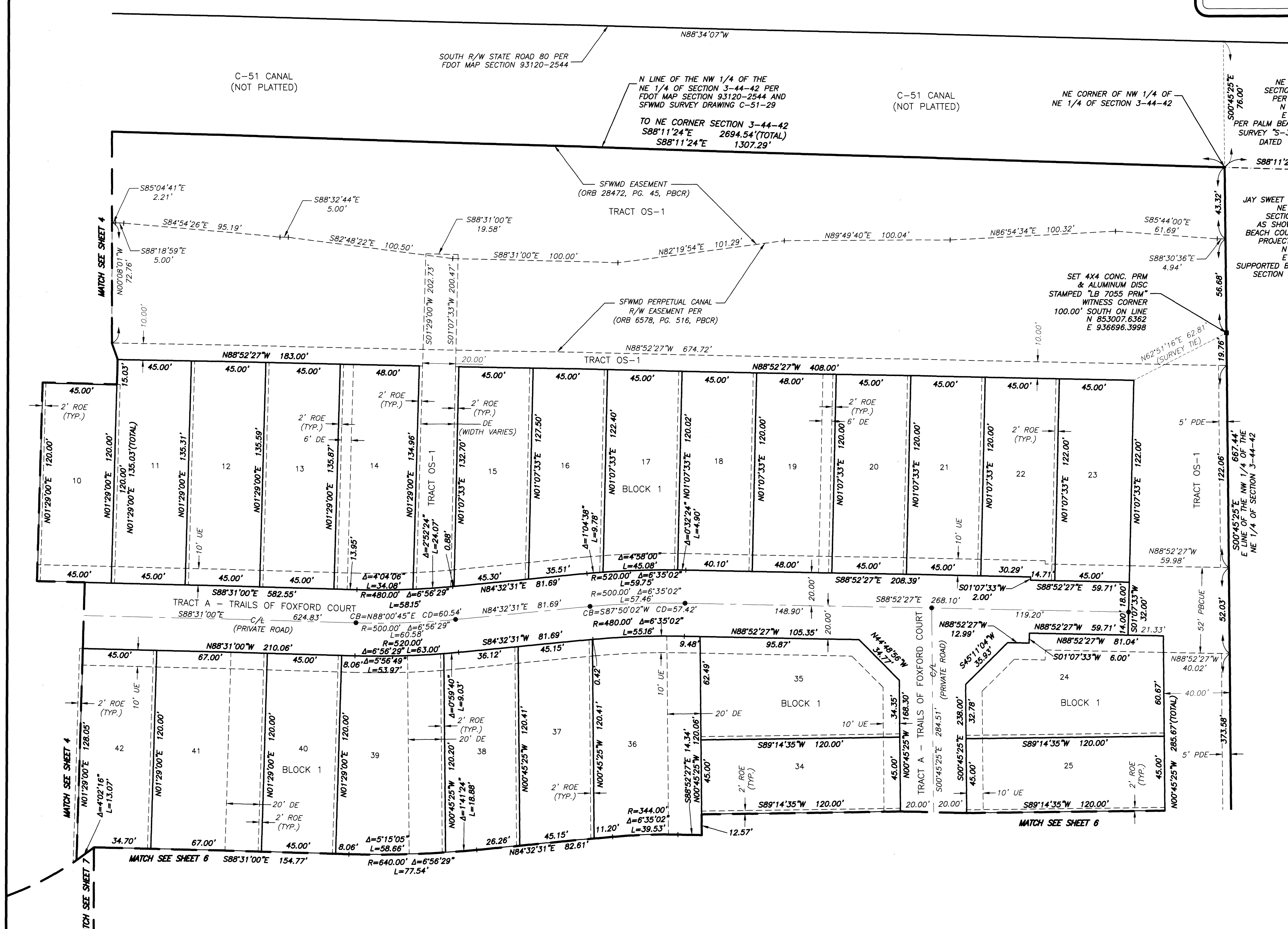
BEING A REPLAT OF PORTIONS OF TRACT 1 AND TRACT 2, BLOCK 13, AND TRACT 75 AND TRACT 76, BLOCK 5, PALM BEACH FARMS COMPANY PLAT NO. 3, RECORDED IN PLAT BOOK 2, PAGES 45 THROUGH 54, OF THE PALM BEACH COUNTY PUBLIC RECORDS, TOGETHER WITH A PORTION OF THE NE 1/4 SECTION 3, TOWNSHIP 44 SOUTH, RANGE 42 EAST, SAID LANDS LYING AND SITUATE IN SECTION 3, TOWNSHIP 44 SOUTH, RANGE 42 EAST, PALM BEACH COUNTY, FLORIDA.

STATE ROAD 80 (SOUTHERN BOULEVARD)
FDOT MAP SECTION 93120-2544



58

SHEET 5 OF 12 SHEETS



NOTE:
 COORDINATES SHOWN ARE GRID COORDINATES
 DATUM = NAD 83 (1990 ADJUSTMENT)
 ZONE = FLORIDA EAST ZONE
 LINEAR UNIT = U.S. SURVEY FEET
 COORDINATE SYSTEM = 1983 STATE PLANE
 TRANSVERSE MERCATOR PROJECTION
 ALL DISTANCES ARE GROUND
 SCALE FACTOR = 1.00030541
 PLAT BEARING = GRID BEARING
 GROUND DISTANCE X SCALE FACTOR = GRID DISTANCE

WGI
 2035 Vista Parkway, West Palm Beach, FL 33411
 Phone No. 866.909.2220 www.wginc.com
 Cert No. 6091 - LB No. 7055
 THIS INSTRUMENT WAS PREPARED BY ERIC R. MATTHEWS, P.S.M.
 PROFESSIONAL SURVEYOR AND MAPPER, LICENSE NO. 6717
 FOR THE FIRM: WANTMAN GROUP, INC.