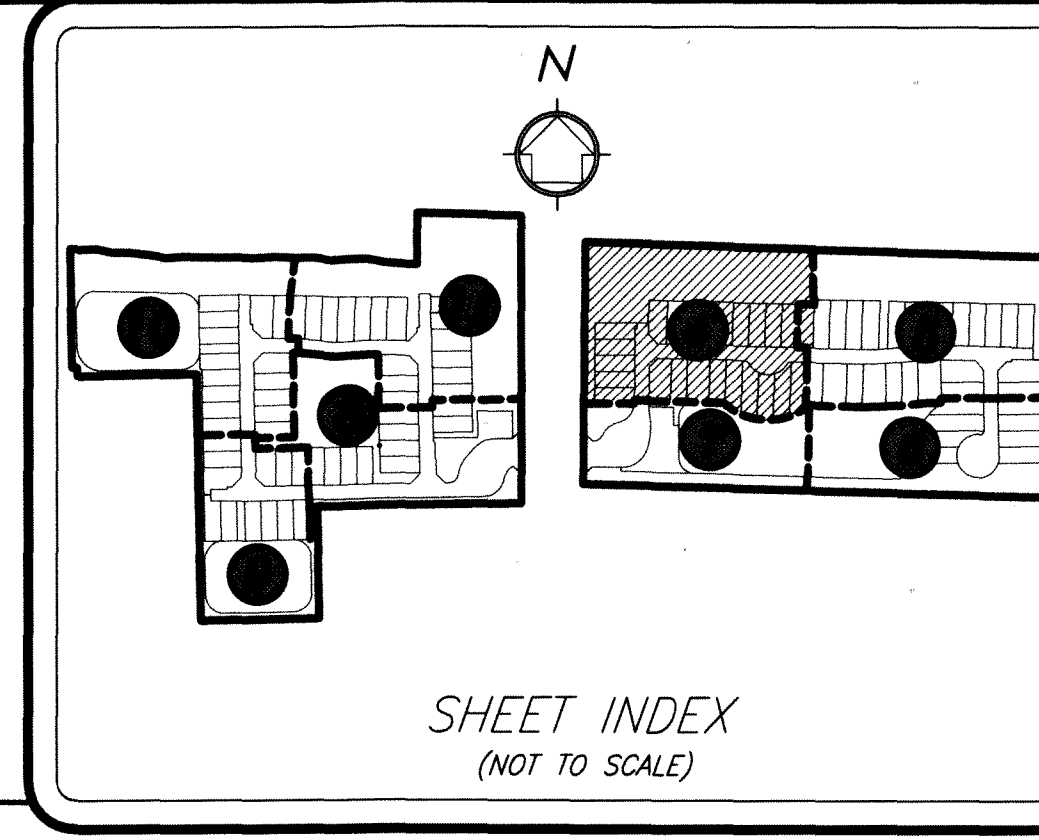


POINTE OF WOODS P.U.D.

BEING A REPLAT OF PORTIONS OF TRACT 1 AND TRACT 2, BLOCK 13, AND TRACT 75 AND TRACT 76, BLOCK 5, PALM BEACH FARMS COMPANY PLAT NO. 3, RECORDED IN PLAT BOOK 2, PAGES 45 THROUGH 54, OF THE PALM BEACH COUNTY PUBLIC RECORDS, TOGETHER WITH A PORTION OF THE NE 1/4 SECTION 3, TOWNSHIP 44 SOUTH, RANGE 42 EAST, SAID LANDS LYING AND SITUATE IN SECTION 3, TOWNSHIP 44 SOUTH, RANGE 42 EAST, PALM BEACH COUNTY, FLORIDA.

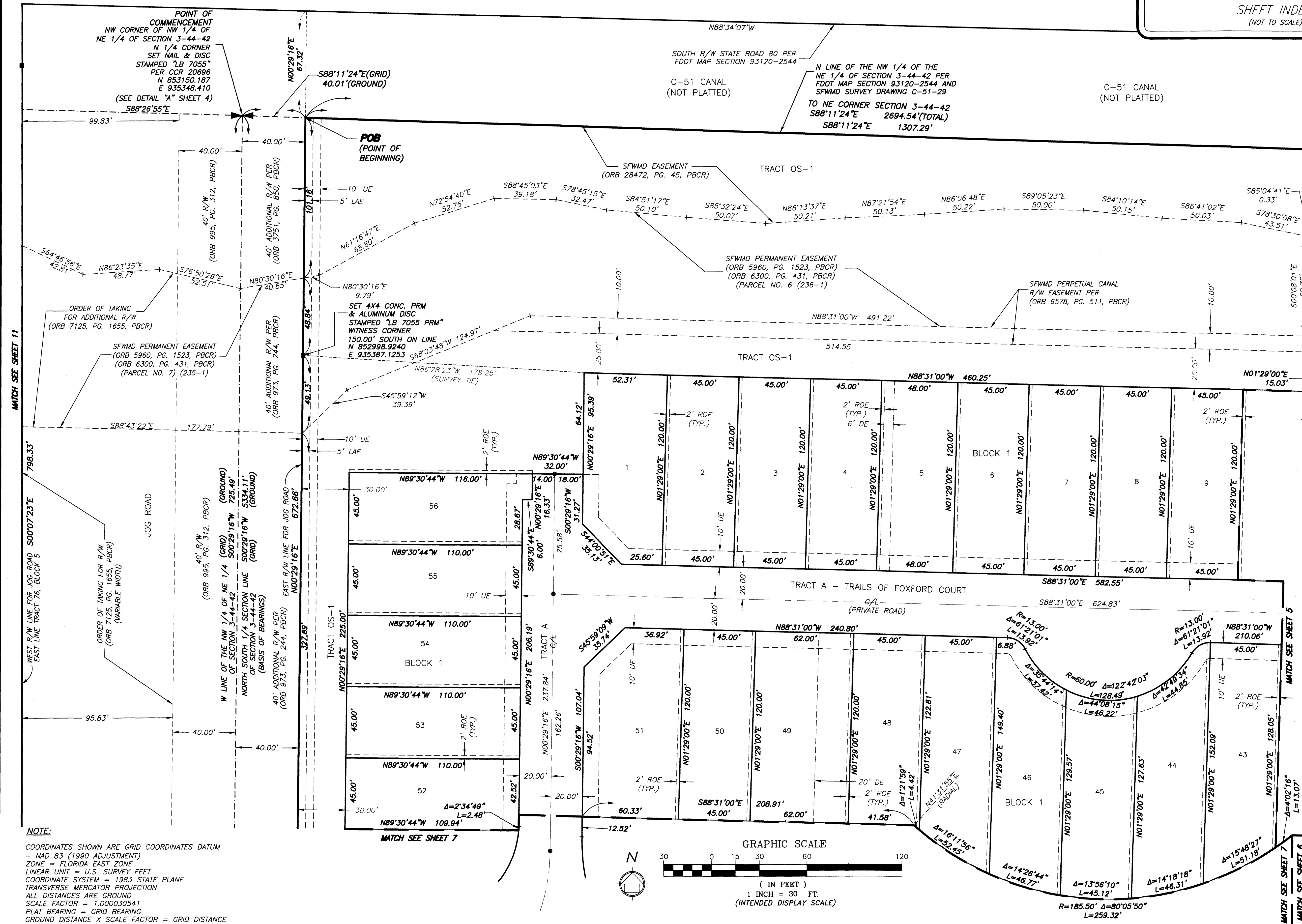
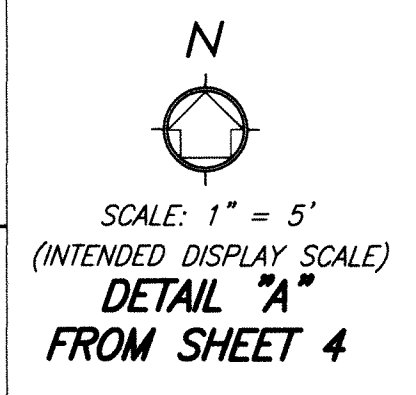
STATE ROAD 80 (SOUTHERN BOULEVARD)
FDOT MAP SECTION 93120-2544



57

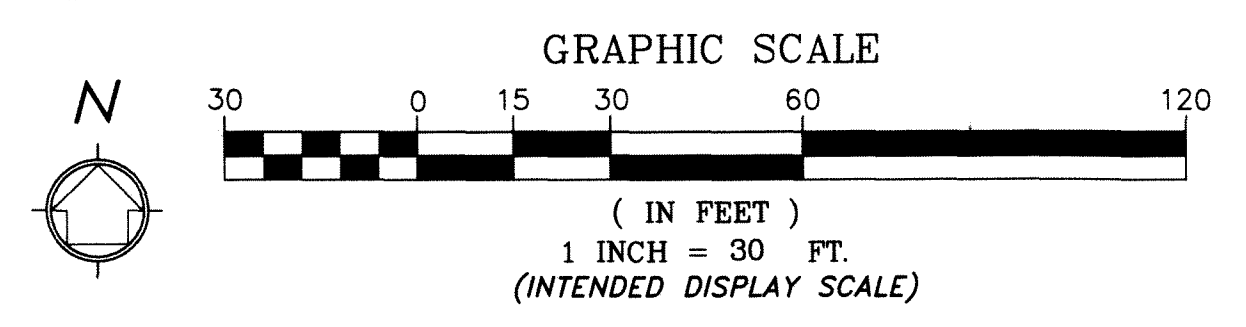
SHEET 4 OF 12 SHEETS

N 1/4 CORNER SECTION 3-44-42 PER CCR 80465 N 853150.179 E 935346.829 PER PALM BEACH COUNTY SURVEY "S-3-03-1293" DATED 10/15/2003 S88°26'55"E
POINT OF COMMENCEMENT NW CORNER OF NW 1/4 OF NE 1/4 OF SECTION 3-44-42 SET NAIL & DISC STAMPED "LB 7055" PER CCR 20696 N 853150.187 E 935348.410 S88°11'24"E
N LINE OF THE NW 1/4 OF SECTION 3-44-42
NORTH SOUTH 1/4 SECTION LINE OF SECTION 3-44-42
S88°26'55"E 1.64'



- LEGEND:**
- AC = ACRES
 - CB = CHORD BEARING
 - CD = CHORD DISTANCE
 - C/L = CENTER LINE
 - CCR = CERTIFIED CORNER RECORD
 - CONC. = CONCRETE
 - DE = DRAINAGE EASEMENT
 - FND. = FOUND
 - FDOT = FLORIDA DEPARTMENT OF TRANSPORTATION
 - FPLE = FLORIDA POWER & LIGHT EASEMENT
 - LB = LICENSED BUSINESS
 - LME = LAKE MAINTENANCE EASEMENT
 - LMAE = LAKE MAINTENANCE ACCESS EASEMENT
 - LSE = LIFT STATION EASEMENT
 - ORB = OFFICIAL RECORDS BOOK
 - PG. = PAGE
 - PDE = PUBLIC DRAINAGE EASEMENT
 - PBCR = PALM BEACH COUNTY RECORDS
 - PBCUE = PALM BEACH COUNTY UTILITY EASEMENT
 - PB = PLAT BOOK
 - = PERMANENT CONTROL POINT (PCP), SET NAIL & BRASS DISC STAMPED "LB 7055"
 - PRM = PERMANENT REFERENCE MONUMENT
 - (R) = RADIAL
 - ROE = ROOF OVERHANG EASEMENT
 - R/W = RIGHT-OF-WAY
 - SFWM = SOUTH FLORIDA WATER MANAGEMENT DISTRICT
 - (TYP.) = TYPICAL
 - UE = UTILITY EASEMENT
 - = SET 4"x4" CONCRETE PRM & ALUMINUM DISC STAMPED "LB 7055 PRM" UNLESS OTHERWISE NOTED
 - ① = SHEET NUMBER
- SECTION 3-44-42 = SECTION 3, TOWNSHIP 44 SOUTH, RANGE 42 EAST

NOTE:
COORDINATES SHOWN ARE GRID COORDINATES DATUM - NAD 83 (1990 ADJUSTMENT)
ZONE = FLORIDA EAST ZONE
LINEAR UNIT = U.S. SURVEY FEET
COORDINATE SYSTEM = 1983 STATE PLANE
TRANSVERSE MERCATOR PROJECTION
ALL DISTANCES ARE GROUND
SCALE FACTOR = 1.00030541
PLAT BEARING = GRID BEARING
GROUND DISTANCE X SCALE FACTOR = GRID DISTANCE



WGI
2035 Vista Parkway, West Palm Beach, FL 33411
Phone No. 866.909.2220 www.wginc.com
Cert No. 6091 - LB No. 7055
THIS INSTRUMENT WAS PREPARED BY ERIC R. MATTHEWS, P.S.M.
PROFESSIONAL SURVEYOR AND MAPPER, LICENSE NO. 6717
FOR THE FIRM: WANTMAN GROUP, INC.