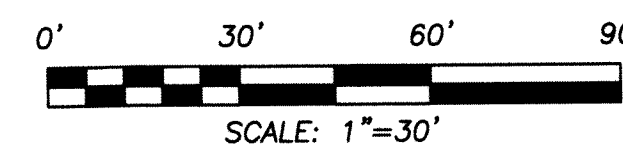
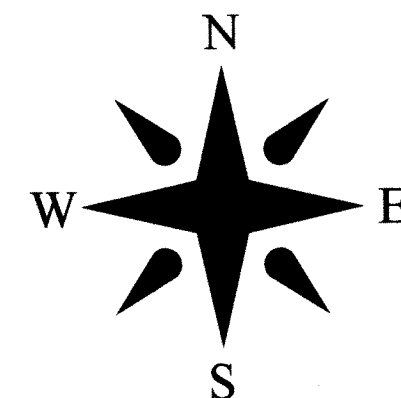


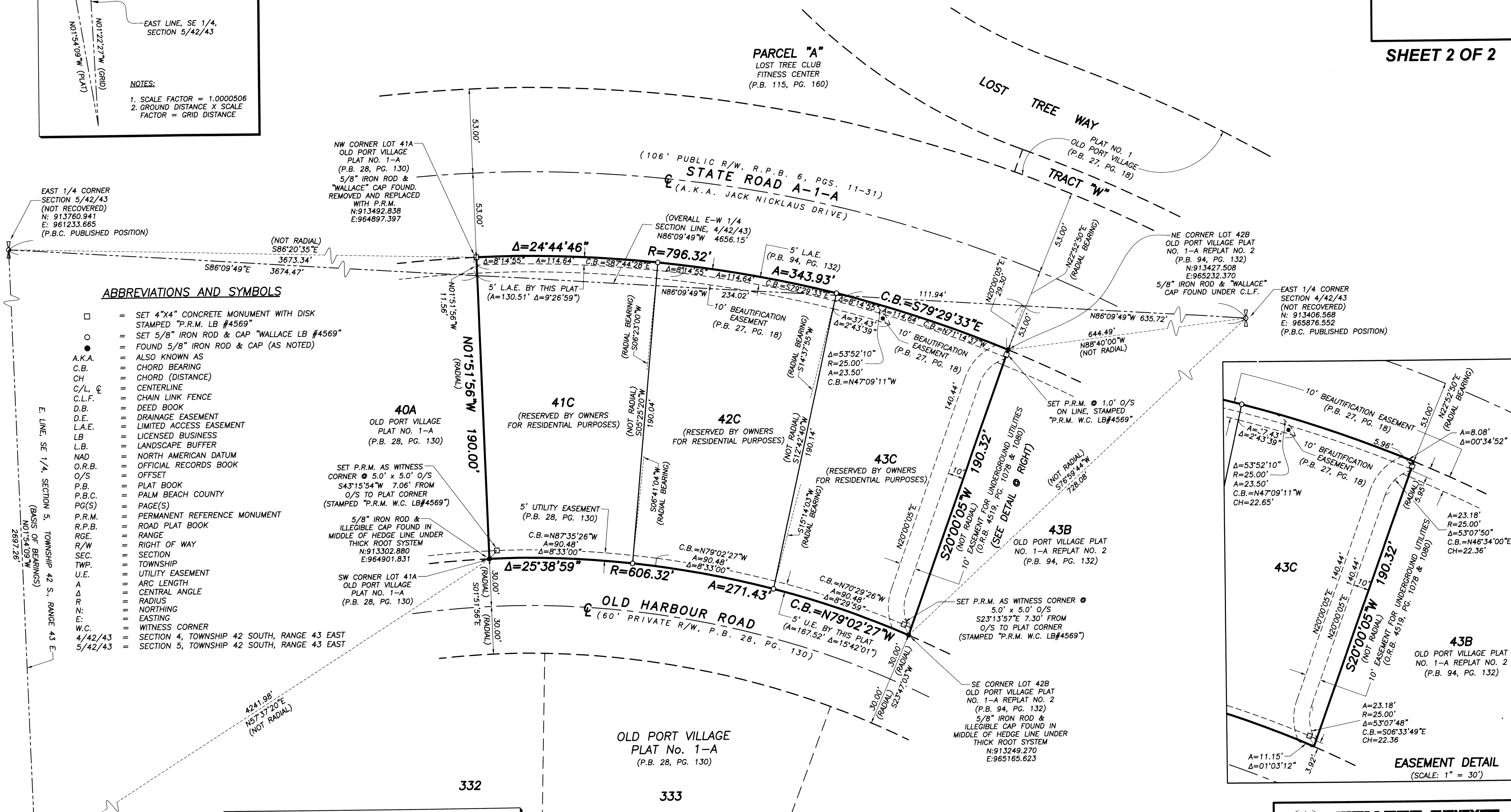
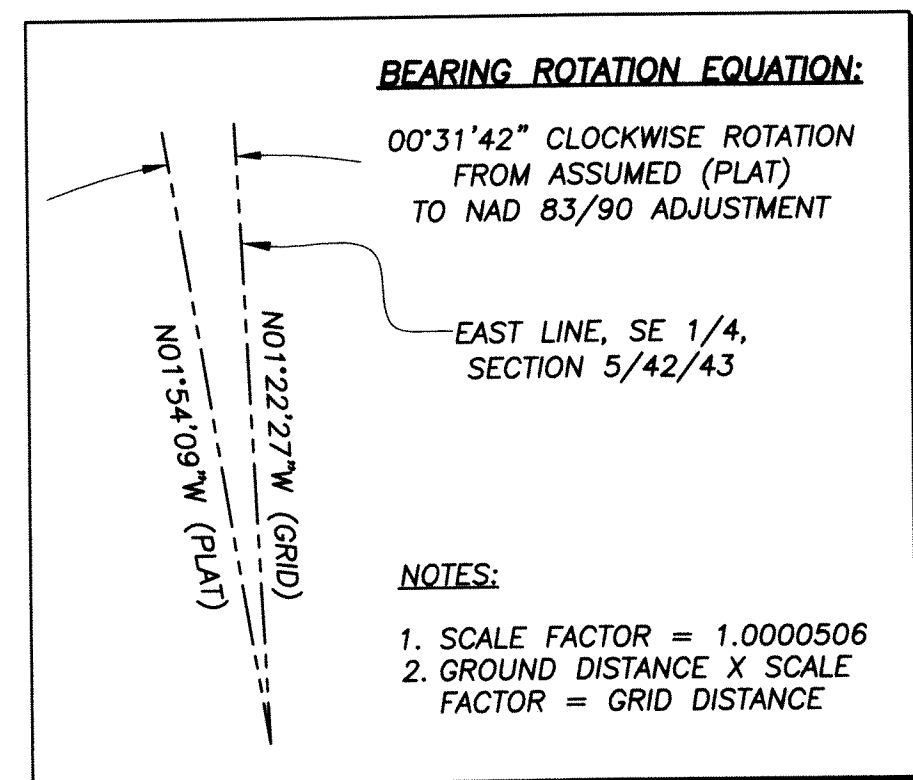
# OLD PORT VILLAGE PLAT NO. 1A REPLAT No. 4 at LOST TREE VILLAGE

BEING A REPLAT OF LOT 41-A, OLD PORT VILLAGE PLAT NO. 1-A, ACCORDING TO THE PLAT THEREOF AS RECORDED IN PLAT BOOK 28, PAGE 130, TOGETHER WITH LOT 42 B, OLD PORT VILLAGE PLAT NO. 1-A REPLAT No. 2, ACCORDING TO THE PLAT THEREOF AS RECORDED IN PLAT BOOK 94, PAGE 132, BOTH OF THE PUBLIC RECORDS OF PALM BEACH COUNTY, FLORIDA, LYING IN SECTION 4, TOWNSHIP 42 SOUTH, RANGE 43 EAST

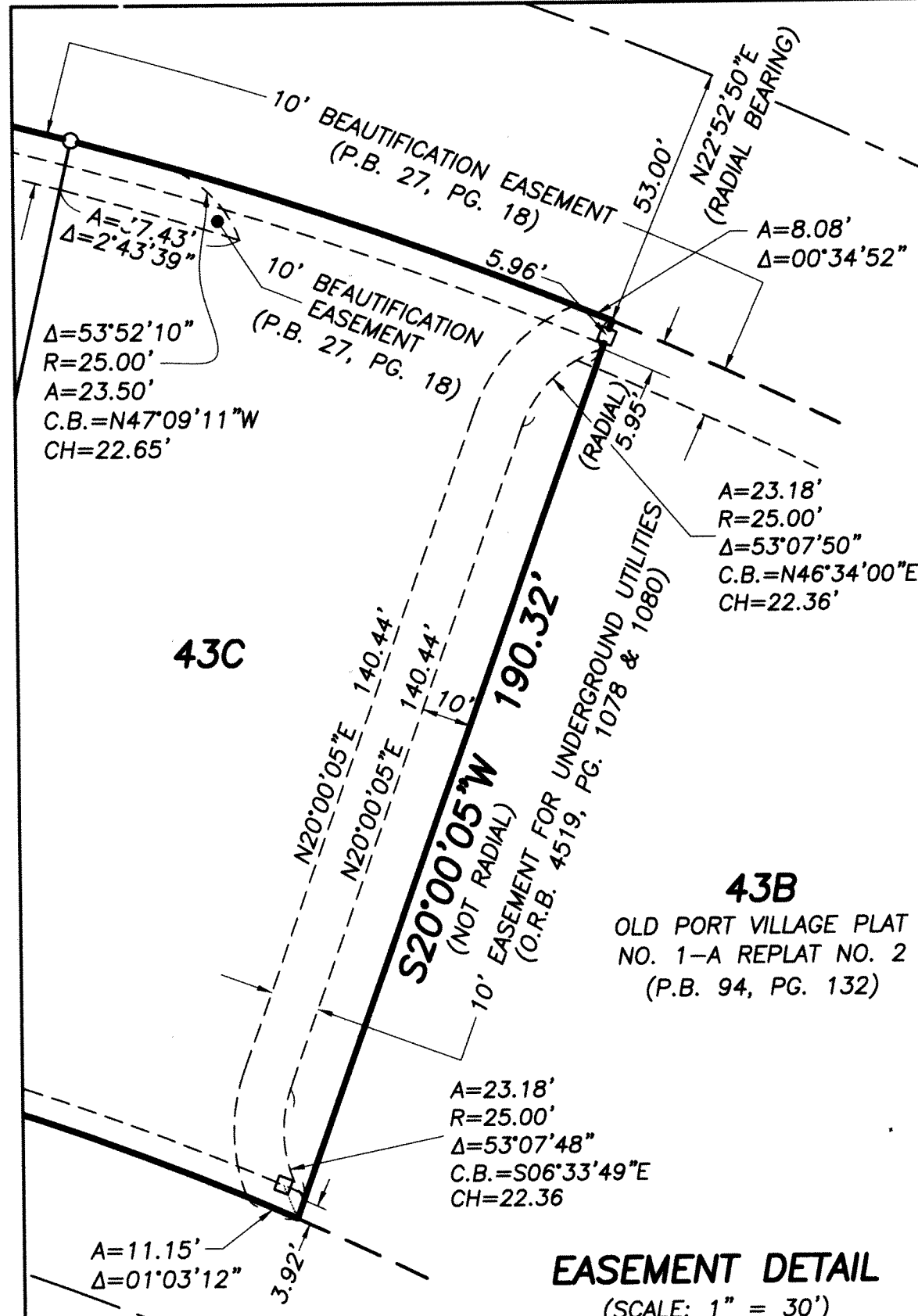


42

SHEET 2 OF 2



- ABBREVIATIONS AND SYMBOLS**
- = SET 4"x4" CONCRETE MONUMENT WITH DISK STAMPED "P.R.M. LB #4569"
  - = SET 5/8" IRON ROD & CAP "WALLACE LB #4569"
  - = FOUND 5/8" IRON ROD & CAP (AS NOTED)
  - = ALSO KNOWN AS
  - = CHORD BEARING
  - = CHORD (DISTANCE)
  - = CENTERLINE
  - = CHAIN LINK FENCE
  - = DEED BOOK
  - = DRAINAGE EASEMENT
  - = LIMITED ACCESS EASEMENT
  - = LICENSED BUSINESS
  - = LANDSCAPE BUFFER
  - = NORTH AMERICAN DATUM
  - = OFFICIAL RECORDS BOOK
  - = OFFSET
  - = PLAT BOOK
  - = PALM BEACH COUNTY
  - = PAGE(S)
  - = PERMANENT REFERENCE MONUMENT
  - = ROAD PLAT BOOK
  - = RANGE
  - = RIGHT OF WAY
  - = SECTION
  - = TOWNSHIP
  - = UTILITY EASEMENT
  - = ARC LENGTH
  - = CENTRAL ANGLE
  - = RADIUS
  - = NORTHING
  - = EASTING
  - = WITNESS CORNER
  - = SECTION 4, TOWNSHIP 42 SOUTH, RANGE 43 EAST
  - = SECTION 5, TOWNSHIP 42 SOUTH, RANGE 43 EAST



**NOTICE:**  
This plat, as recorded in its graphic form, is the official depiction of the subdivided lands described herein and will in no circumstances be supplanted in authority by any other graphic or digital form of the plat. There may be additional restrictions that are not recorded on this plat that may be found in the Public Records of Palm Beach County.

SOUTHEAST CORNER SECTION 5/42/43 (NOT RECOVERED)  
N: 911064.320  
E: 961298.349  
(P.B.C. PUBLISHED POSITION)

This instrument prepared by: Robert J. Cajal in the office of Wallace Surveying Corporation  
5553 Village Boulevard,  
West Palm Beach, Florida 33407

<b>WALLACE SURVEYING</b> CORP. LICENSED BUSINESS # 4569 5553 VILLAGE BOULEVARD, WEST PALM BEACH, FLORIDA 33407 * (561) 640-4551			
FIELD:	JOB No.: 87-1066.2	F.B.	PG.
OFFICE: R.C.	DATE: APRIL, 2018	DWG. No.:	87-1066-7
CK'D:	REF: 87-1066-7.DWG	SHEET 2 OF 2	