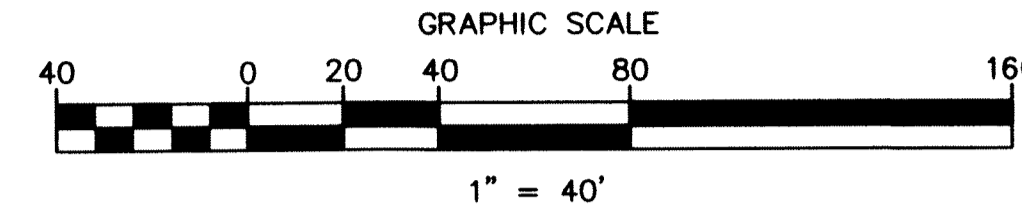


LAKE WORTH STORAGE 2 MUPD

A PORTION OF THE EAST ONE HALF OF THE NORTHEAST ONE QUARTER OF THE SOUTHWEST ONE QUARTER OF SECTION 1, TOWNSHIP 45 SOUTH, RANGE 42 EAST, PALM BEACH COUNTY, FLORIDA



NOTICE: THIS PLAT, AS RECORDED IN ITS GRAPHIC FORM, IS THE OFFICIAL DEPICTION OF THE SUBDIVIDED LANDS DESCRIBED HEREIN AND WILL IN NO CIRCUMSTANCES BE SUPPLANTED IN AUTHORITY BY ANY OTHER GRAPHIC OR DIGITAL FORM OF THE PLAT. THERE MAY BE ADDITIONAL RESTRICTIONS THAT ARE NOT RECORDED ON THIS PLAT THAT MAY BE FOUND IN THE PUBLIC RECORDS OF PALM BEACH COUNTY, FLORIDA.



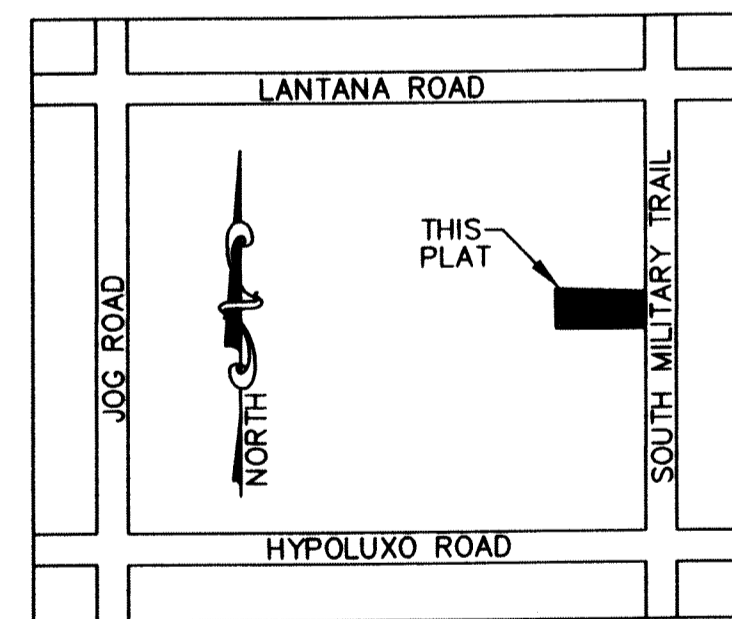
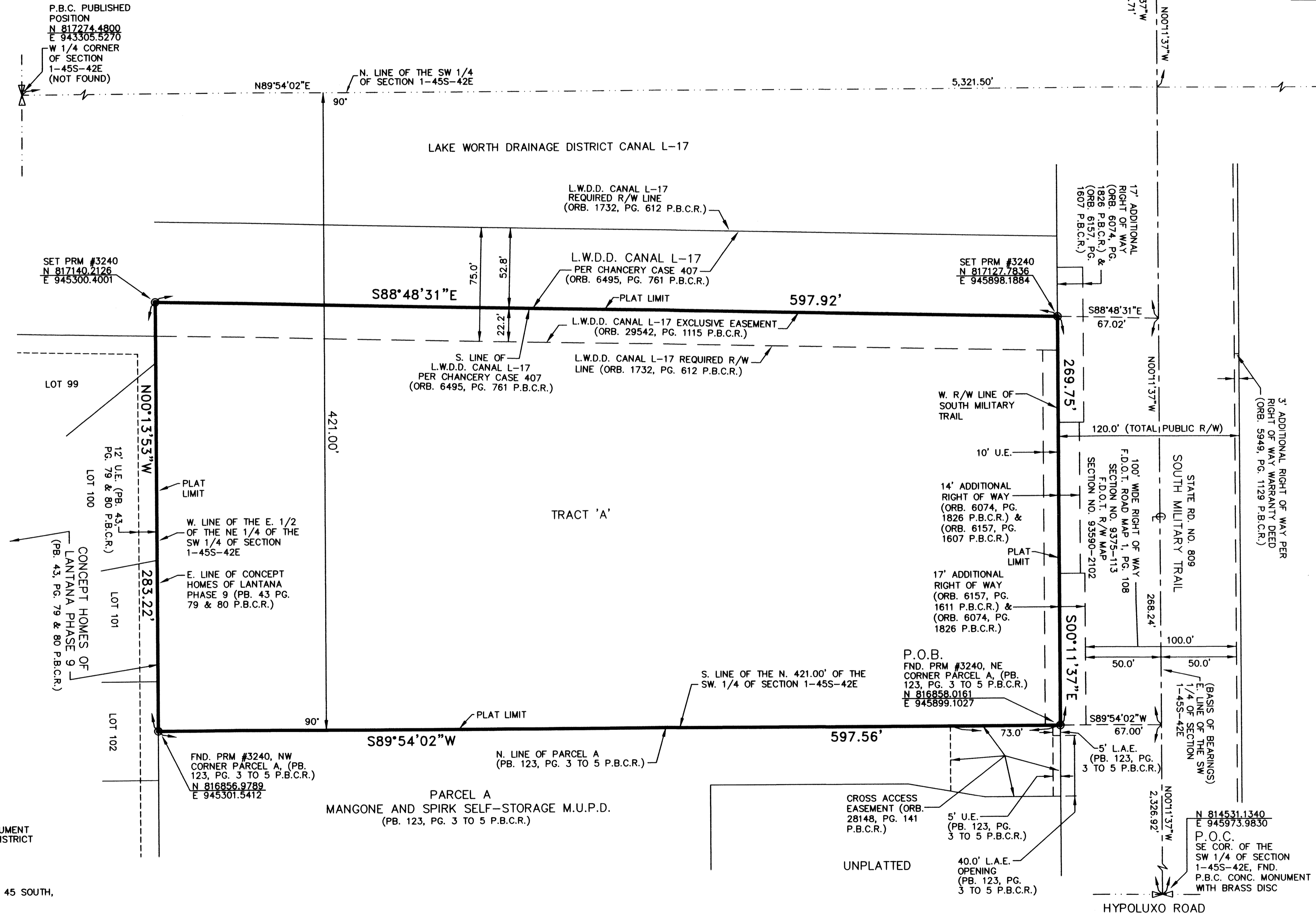
N 820111.1890
E 945955.0910
NE COR. OF THE
NW 1/4 OF SECTION
1-45S-42E, FND.
P.B.C. CONC. MONUMENT
WITH BRASS DISC

SHEET 2 OF 2

P.B.C. PUBLISHED
POSITION
N 817283.7740
E 948827.2200
E 1/4 CORNER
OF SECTION
1-45S-42E
(NOT FOUND)

SURVEYOR'S NOTES:

- THE BEARINGS SHOWN HEREON ARE BASED ON THE EAST LINE OF THE WEST 1/2 OF SECTION 1-45S-42E HAVING A GRID BEARING OF NORTH 00°11'37" WEST AND ALL OTHER BEARINGS ARE RELATIVE THERETO.
- THE COORDINATES SHOWN HEREON ARE GRID. DATUM = NAD 83, 1990 ADJUSTMENT. ZONE = FLORIDA EAST. LINEAR UNIT = US SURVEY FOOT. COORDINATE SYSTEM 1983 STATE PLANE TRANSVERSE MERCATOR PROJECTION. ALL DISTANCES ARE GROUND. SCALE FACTOR = 1.000037471. GROUND DISTANCE X SCALE FACTOR = GRID DISTANCE.
- NO BUILDING OR ANY KIND OF CONSTRUCTION OF TREES OR SHRUBS SHALL BE PLACED ON ANY EASEMENT WITHOUT WRITTEN CONSENT OF ALL EASEMENT BENEFICIARIES AND ALL APPLICABLE COUNTY APPROVALS OR PERMITS AS REQUIRED FOR SUCH ENCROACHMENTS.
- IN THOSE CASES WHERE EASEMENTS OF DIFFERENT TYPES CROSS OR OTHERWISE COINCIDE, DRAINAGE EASEMENTS SHALL HAVE FIRST PRIORITY, UTILITY EASEMENTS SHALL HAVE SECOND PRIORITY, ACCESS EASEMENTS SHALL HAVE THIRD PRIORITY, AND ALL OTHER EASEMENTS SHALL BE SUBORDINATE TO THESE WITH THEIR PRIORITIES BEING DETERMINED BY USE RIGHTS GRANTED.
- ALL SET PRM'S #3240 ARE ONE OF THE FOLLOWING: 4" SQUARE CONCRETE MONUMENT, 24" LONG, WITH NAIL & DISC STAMPED "PEB PRM, 3240". NAIL & DISC STAMPED "PEB PRM, 3240" SET IN CONCRETE OR ASPHALT.
- BUILDING SETBACK LINES SHALL BE AS REQUIRED BY CURRENT PALM BEACH COUNTY ZONING REGULATIONS.
- SITE PLAN ZONING CONTROL NUMBER: 2009-02300
- THE LAND DESCRIBED HEREON IS SUBJECT TO THAT BLANKET CROSS ACCESS EASEMENT AS RECORDED IN (ORB. 29426, PG. 463 P.B.C.R.).



LOCATION / KEY MAP
NOT TO SCALE

LEGEND:
 ● = SET PERMANENT REFERENCE MONUMENT (PRM) #3240 UNLESS NOTED OTHERWISE (SEE SURVEYOR'S NOTE 5)
 PG. = PAGE
 PB. = PLATBOOK
 P.B.C.R. = PALM BEACH COUNTY RECORDS
 R/W = RIGHT OF WAY
 P.O.B. = POINT OF BEGINNING
 P.B.C. = PALM BEACH COUNTY
 N 741502.636 COORDINATE NORTHING VALUE
 E 933748.851 COORDINATE EASTING VALUE

CONC. = CONCRETE
 PRM = PERMANENT REFERENCE MONUMENT
 L.W.D.D. = LAKE WORTH DRAINAGE DISTRICT
 C = CENTERLINE
 L.A.E. = LIMITED ACCESS EASEMENT
 U.E. = UTILITY EASEMENT
 ORB. = OFFICIAL RECORD BOOK
 1-45S-42E = SECTION 1, TOWNSHIP 45 SOUTH, RANGE 42 EAST
 F.D.O.T. = FLORIDA DEPARTMENT OF TRANSPORTATION
 P.O.C. = POINT OF COMMENCEMENT
 COR. = CORNER

3' ADDITIONAL RIGHT OF WAY PER RIGHT OF WAY WARRANTY DEED (ORB. 5949, PG. 1129 P.B.C.R.)

(BASIS OF BEARINGS) 1/4 OF SECTION 1-45S-42E

N 814531.1340
E 945873.9830
P.O.C.
SE COR. OF THE
SW 1/4 OF SECTION
1-45S-42E, FND.
P.B.C. CONC. MONUMENT
WITH BRASS DISC