

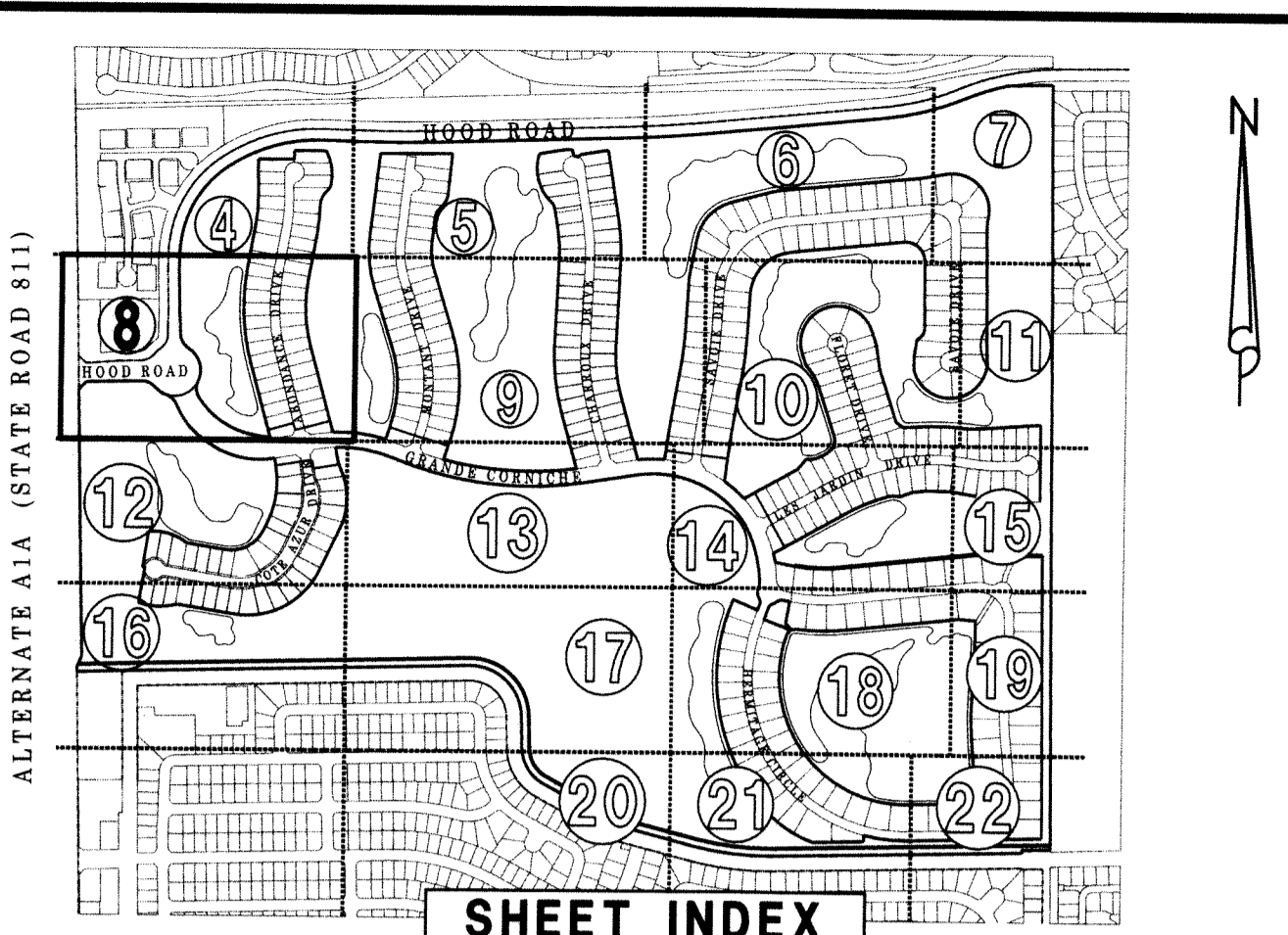
# FRENCHMAN'S RESERVE PCD - GOLF COURSE REPLAT

BEING A REPLAT OF TRACTS L1, L2, W1, W2, W3 AND UP1, AS SHOWN ON FRENCHMAN'S RESERVE PCD - PLAT ONE, RECORDED IN PLAT BOOK 92, PAGES 11 THROUGH 20, AND A REPLAT OF TRACTS L, UP1 AND UP2, AS SHOWN ON FRENCHMAN'S RESERVE PCD - PLAT "A", RECORDED IN PLAT BOOK 92, PAGES 194 THROUGH 196, AND A REPLAT OF TRACTS G, L1, L2, UP1 AND W, AS SHOWN ON FRENCHMAN'S RESERVE PCD - PLAT "F", RECORDED IN PLAT BOOK 93, PAGES 82 THROUGH 87, AND A REPLAT OF TRACTS L1, L2, W1, W2, W3 AND UP1, AS SHOWN ON FRENCHMAN'S RESERVE PCD - PLAT "D", RECORDED IN PLAT BOOK 93, PAGES 123 THROUGH 128, AND A REPLAT OF TRACTS A, B AND UP1, AS SHOWN ON FRENCHMAN'S RESERVE PCD - CLUBHOUSE, RECORDED IN PLAT BOOK 94, PAGES 138 THROUGH 139, AND A REPLAT OF TRACTS L1, UP1, UP3, AND W1, AS SHOWN ON FRENCHMAN'S RESERVE PCD - PLAT "B", RECORDED IN PLAT BOOK 96, PAGES 102 THROUGH 104, AND A REPLAT OF TRACTS L1 AND L2, AS SHOWN ON FRENCHMAN'S RESERVE PCD - PLAT "E", RECORDED IN PLAT BOOK 101, PAGES 1 THROUGH 6, AND A REPLAT OF TRACTS L-A, O, WA, WB, WC, WD, UP, UPB, UPC, UPD, UPE, AS SHOWN ON FRENCHMAN'S RESERVE PCD - GOLF COURSE, RECORDED IN PLAT BOOK 109, PAGES 73 THROUGH 87 PUBLIC RECORDS OF PALM BEACH COUNTY, FLORIDA

147

LYING IN SECTION 31, TOWNSHIP 41 SOUTH, RANGE 43 EAST, CITY OF PALM BEACH GARDENS, PALM BEACH COUNTY, FLORIDA

JULY 2018 SHEET 8 OF 23



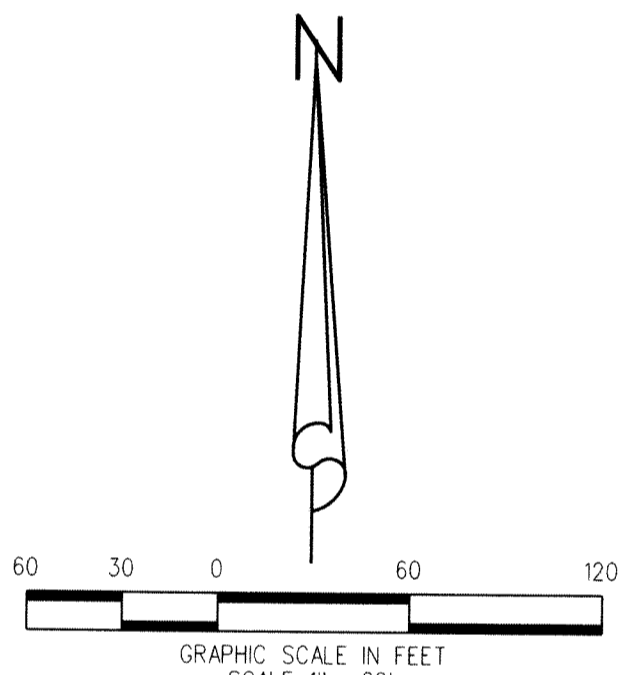
SHEET INDEX

**ABBREVIATIONS:**

C.M.	= CONCRETE MONUMENT
CB	= CHORD BEARING
CONC.	= CONCRETE
Δ	= DELTA ANGLE
F.K.A.	= FORMERLY KNOWN AS
FND.	= FOUND
FPL	= FLORIDA POWER & LIGHT CO.
I.D.	= IDENTIFICATION
L	= LENGTH
L.M.E.	= LAKE MAINTENANCE EASEMENT
MON.	= MONUMENT
O.R.B.	= OFFICIAL RECORD BOOK
P.B.	= PLAT BOOK
P.B. Co.	= PALM BEACH COUNTY
P.C.S.	= PAGES
PRM	= PERMANENT REFERENCE MONUMENT
R	= RADIUS
R/W	= RIGHT OF WAY
SUA	= SEACOAST UTILITY AUTHORITY
W.B.E.	= WETLAND BUFFER EASEMENT

CHAMBORD TERRACE

FRENCHMAN'S RESERVE PCD - PLAT ONE  
(P.B. 92 PGS. 11-20)  
(NOT PART OF THIS PLAT)



HOOD ROAD  
(F.K.A. FLAMINGO ROAD)  
S88°35'54"E 657.44'

TRACT "GC-1"  
F.K.A. TRACT O  
(P.B. 109, PGS. 73-87)

TRACT "WM-7"

TRACT "WM-3"  
(P.B. 92, PGS. 194-196)

TRACT "WM-3"  
(P.B. 92, PGS. 194-196)

TRACT "GC-1"  
F.K.A. TRACT O  
(P.B. 109, PGS. 73-87)

TRACT "GC-1"  
F.K.A. TRACT O  
(P.B. 109, PGS. 73-87)

TRACT "WM-4"  
F.K.A. TRACT L1  
(P.B. 96, PGS. 102-104)

ABONDANCE DRIVE  
(NOT PART OF THIS PLAT)

FRENCHMAN'S RESERVE PCD  
PLAT A  
(P.B. 92, PGS. 194-196)  
(NOT PART OF THIS PLAT)

DETAIL "M"

FLORIDA EAST COAST RAILWAY

ALTERNATE A1A (STATE ROAD 811)

**LEGEND:**

	DENOTES FND. 4"x4" CONC. MON. WITH DISK "PRM LB 4431"
	DENOTES FND. 4"x4" CONC. MON. WITH DISK "PRM LB 2171"
	DENOTES FND. 4"x4" CONC. MON. WITH DISK "PRM LB 7055"
	DENOTES SET 5/8" IRON ROD WITH METAL CAP "PRM LB 4431"
	DENOTES SET MAG NAIL & DISK "PRM LB 4431"

**LIDBERG LAND SURVEYING, INC.**  
LB4431 675 West Indiantown Road, Suite 200, Jupiter, Florida 33458 TEL. 561-746-8454

CAD.	K:\UST \ 31443 \ 109-73 \ 17-029-306 \ 17-029-306.DGN
REF.	
FLD.	FB. PG.
OFF.	CASASUS DATE JULY 2018
CKD.	D.C.L. SHEET 8 OF 23 DWG. 017-029P