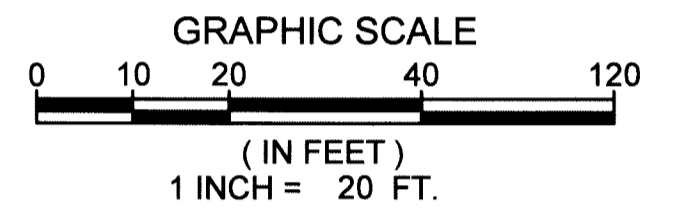
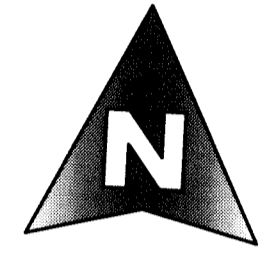
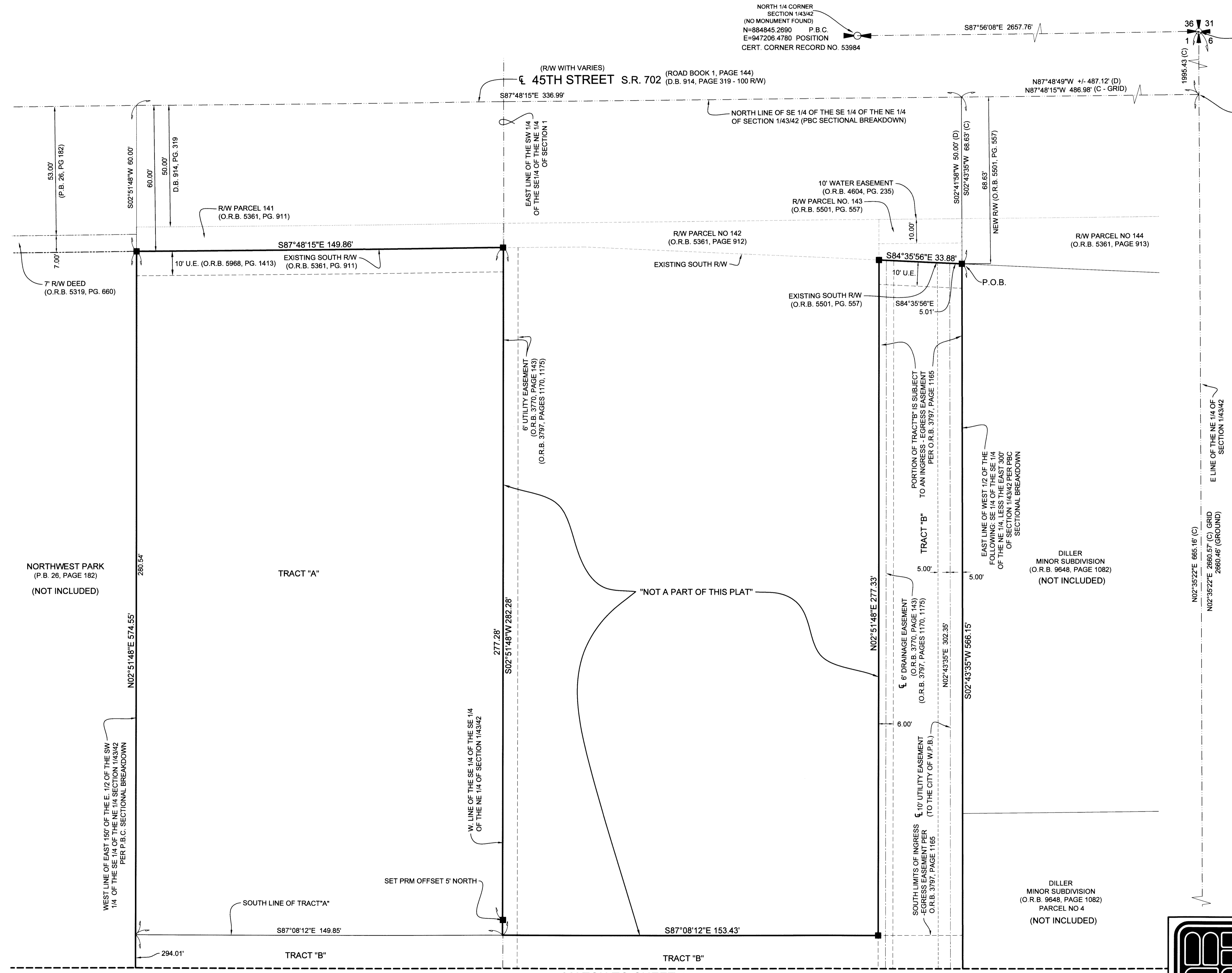


# 45TH STREET INDUSTRIAL PROPERTIES

LYING IN SECTION 1, TOWNSHIP 43 SOUTH, RANGE 42 EAST, CITY OF WEST PALM BEACH,  
PALM BEACH COUNTY, FLORIDA.

136

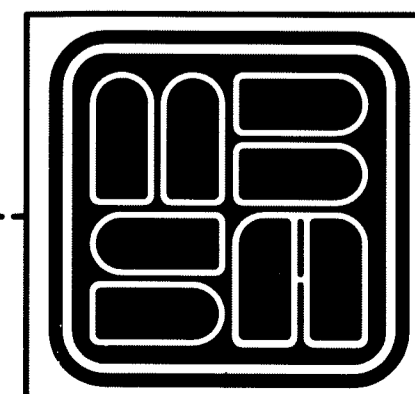
SHEET 3 OF 4



**SYMBOLS**

- ⊕ = CENTERLINE
- ▭ = PROPERTY LINE
- D = DEED
- C = CALCULATED
- FND. = FOUND
- NO. = NUMBER
- (OA) = OVERALL
- P.B. = PLAT BOOK
- P.B.C. = PALM BEACH COUNTY
- P.S.M. = PROFESSIONAL SURVEYOR & MAPPER
- C.M. = CONCRETE MONUMENT
- PG. = PAGE
- R/W = RIGHT-OF-WAY
- P.O.C. = POINT OF COMMENCEMENT
- P.O.B. = POINT OF BEGINNING
- O.R.B. = OFFICIAL RECORD BOOK
- D.B. = DEED BOOK
- = SET 4"x4" C.M. WITH 2" ALUMINUM DISK STAMPED PRM LB 2438
- = SET 1/2" I.R. & C. STAMPED "MBSA LB 2438"
- = FOUND I.R. & C. AS SHOWN
- ⊙ = SET NAIL AND DISK STAMPED "MBSA LB 2438"
- ⊕ = SECTION CORNER
- ⊕ = 1/4 SECTION CORNER
- PRM = PERMANENT REFERENCE MONUMENT
- W.P.B. = WEST PALM BEACH

**COORDINATE NOTE:**  
STATE PLANE COORDINATES SHOWN ARE GRID DATUM, NAD 83 1990 ADJUSTMENT, FLORIDA EAST ZONE, COORDINATE SYSTEM 1983 STATE PLANE, TRANSVERSE MERCATOR PROJECTION  
LINEAR UNIT = US SURVEY FEET  
ALL DISTANCES ARE GROUND  
SCALE FACTOR = 1.0000399  
GROUND DISTANCE X SCALE FACTOR = GRID DISTANCE  
BEARINGS ARE GRID NAD 83/1990 ADJUSTMENT



**MICHAEL B. SCHORAH & ASSOCIATES, INC.**  
1850 FOREST HILL BLVD., SUITE 206  
WEST PALM BEACH, FLORIDA 33406  
EB# 2438 TEL. (561) 968-0080 FAX. (561) 642-9726 LB# 2438

**45TH STREET INDUSTRIAL PROPERTIES**

MATCH TO SHEET 4