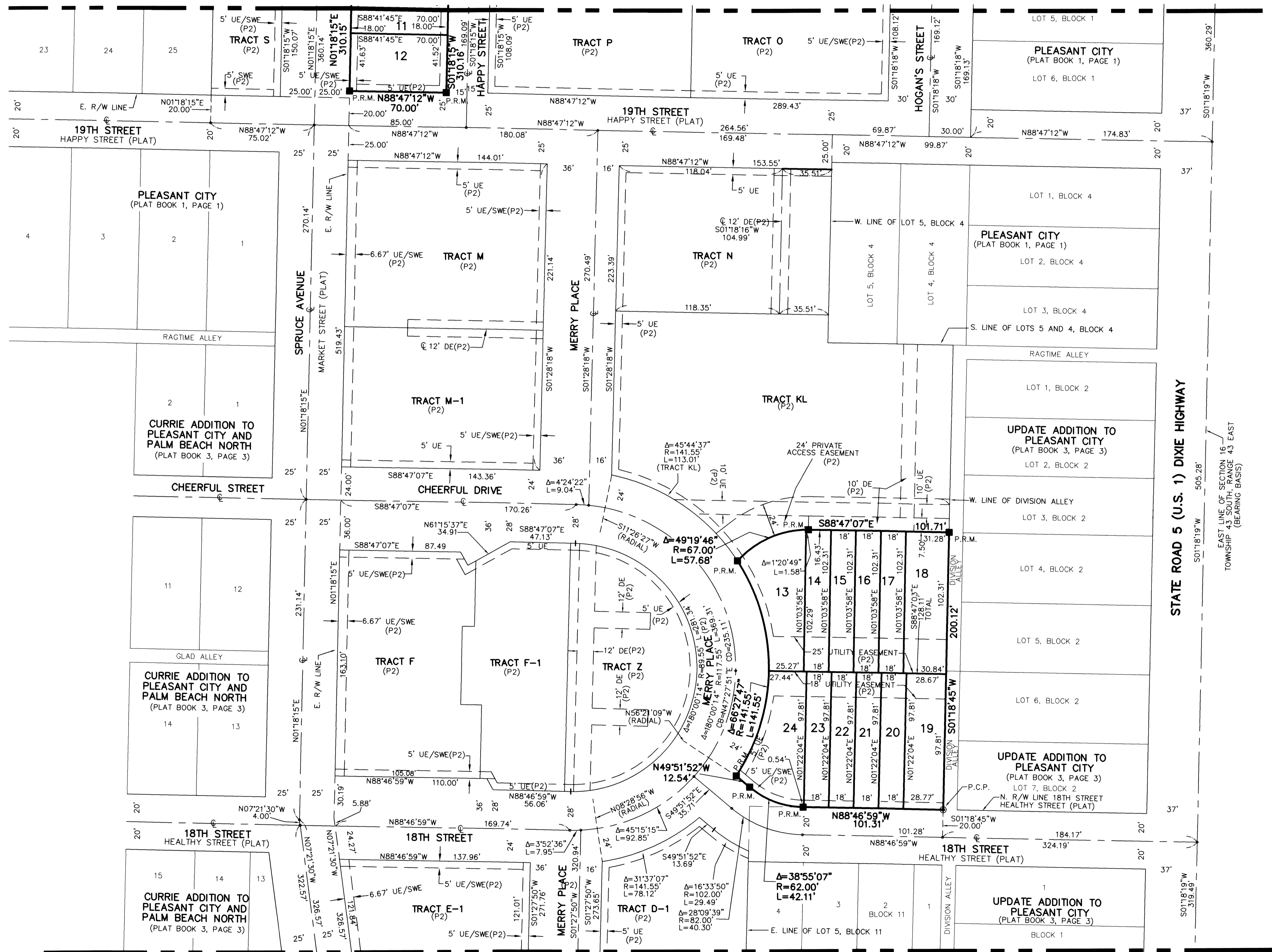


MERRY PLACE REPLAT

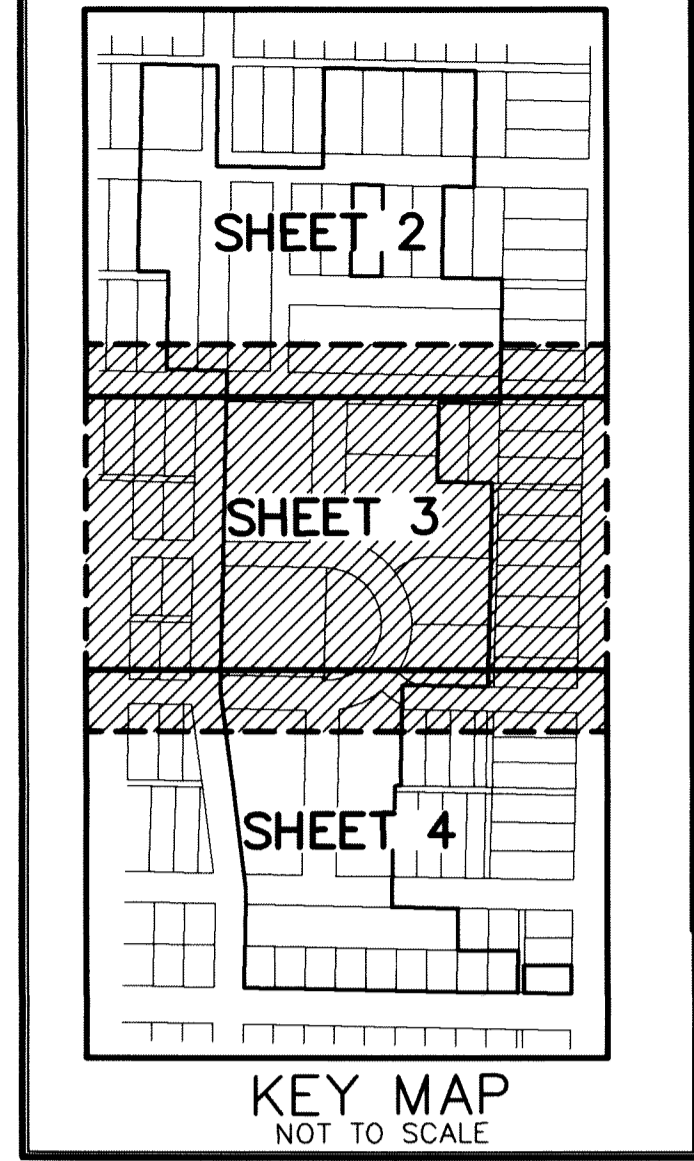
A REPLAT OF TRACTS A, B, G, J, Q, R AND Z1, MERRY PLACE, ACCORDING TO THE PLAT THEREOF, AS RECORDED IN PLAT BOOK 108 PAGES 190 THROUGH 194 OF THE PUBLIC RECORDS OF PALM BEACH COUNTY, FLORIDA, LYING IN SECTION 16, TOWNSHIP 43 SOUTH, RANGE 43 EAST, CITY OF WEST PALM BEACH, PALM BEACH COUNTY, FLORIDA

THIS INSTRUMENT PREPARED BY
DAVID P. LINDLEY
OF
CAULFIELD and WHEELER, INC.
SURVEYORS - ENGINEERS - PLANNERS
7900 GLADES ROAD, SUITE 100
BOCA RATON, FLORIDA 33434 - (561)392-1991
CERTIFICATE OF AUTHORIZATION NO. LB3591

MATCH LINE SHEET 2 OF 5

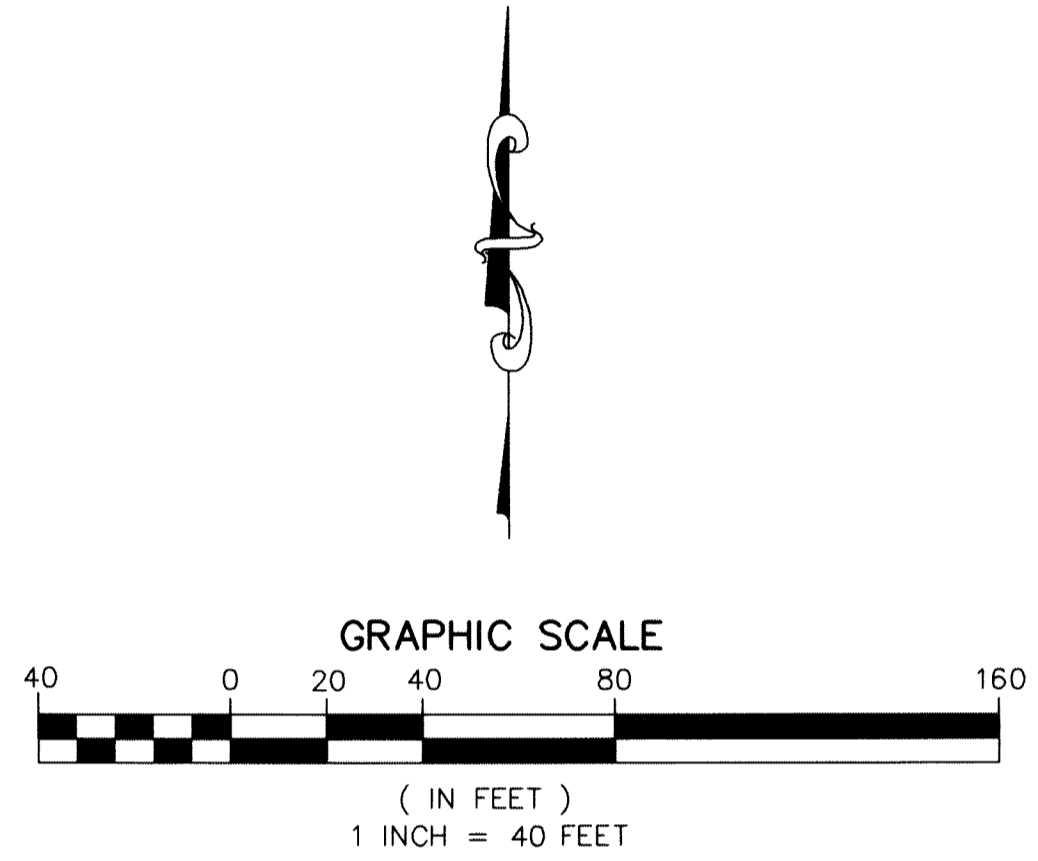


MATCH LINE SHEET 4 OF 5



SHEET 3 OF 4

129



- SURVEY NOTES AND LEGEND:**
1. IN THOSE CASES WHERE EASEMENTS OF DIFFERENT TYPES CROSS OR OTHERWISE COINCIDE, DRAINAGE EASEMENTS SHALL HAVE FIRST PRIORITY, UTILITY EASEMENTS SHALL HAVE SECOND PRIORITY, ACCESS EASEMENTS SHALL HAVE THIRD PRIORITY, AND ALL OTHER EASEMENTS SHALL BE SUBORDINATE TO THESE WITH THEIR PRIORITIES BEING DETERMINED BY USE RIGHTS GRANTED.
 2. BUILDING SETBACK LINES SHALL BE AS REQUIRED BY CURRENT CITY OF WEST PALM BEACH ZONING REGULATIONS.
 3. NO BUILDINGS OR ANY KIND OF CONSTRUCTION OR TREES OR SHRUBS SHALL BE PLACED ON DRAINAGE EASEMENTS, EXCEPT DRIVEWAYS.
 4. APPROVAL OF LANDSCAPING OR UTILITY EASEMENTS, SHALL BE ONLY WITH APPROVAL OF ALL UTILITIES OCCUPYING SAME.
 5. O.R.B. - OFFICIAL RECORD BOOK
 6. P.R.M. - INDICATES SET PERMANENT REFERENCE MONUMENT MARKED LB3591, UNLESS NOTED OTHERWISE
 7. U.E. - INDICATES UTILITY EASEMENT.
 8. D.E. - INDICATES DRAINAGE EASEMENT.
 9. LINES INTERSECTING CURVES ARE NON-RADIAL UNLESS SHOWN OTHERWISE.
 10. "NOTICE" THIS PLAT, AS RECORDED IN ITS GRAPHIC FORM, IS THE OFFICIAL DEFINITION OF THE SUBDIVIDED LANDS DESCRIBED HEREIN AND WILL IN NO CIRCUMSTANCES BE SUPPLANTED IN AUTHORITY BY ANY OTHER GRAPHIC OR DIGITAL FORM OF THE PLAT. THERE MAY BE ADDITIONAL RESTRICTIONS THAT ARE NOT RECORDED ON THIS PLAT THAT MAY BE FOUND IN THE PUBLIC RECORDS OF PALM BEACH COUNTY.
 12. (P2) DENOTES MERRY PLACE RECORDED IN PLAT BOOK 108, PAGES 190-194
 12. (PLAT) DENOTES UNDERLYING PLAT
 13. BEARINGS SHOWN HEREON ARE RELATIVE TO A RECORD BEARING OF N88°56'16"W ALONG THE SOUTH LINE OF TRACT A, MERRY PLACE RECORDED IN PLAT BOOK 108, PAGES 190-194
 14. (R) - DENOTES RADIAL LINE.
 15. R/W - DENOTES RIGHT-OF-WAY
 16. SWE - DENOTES SIDEWALK EASEMENT.
 16. PSE - DENOTES PRIVATE SANITARY EASEMENT.