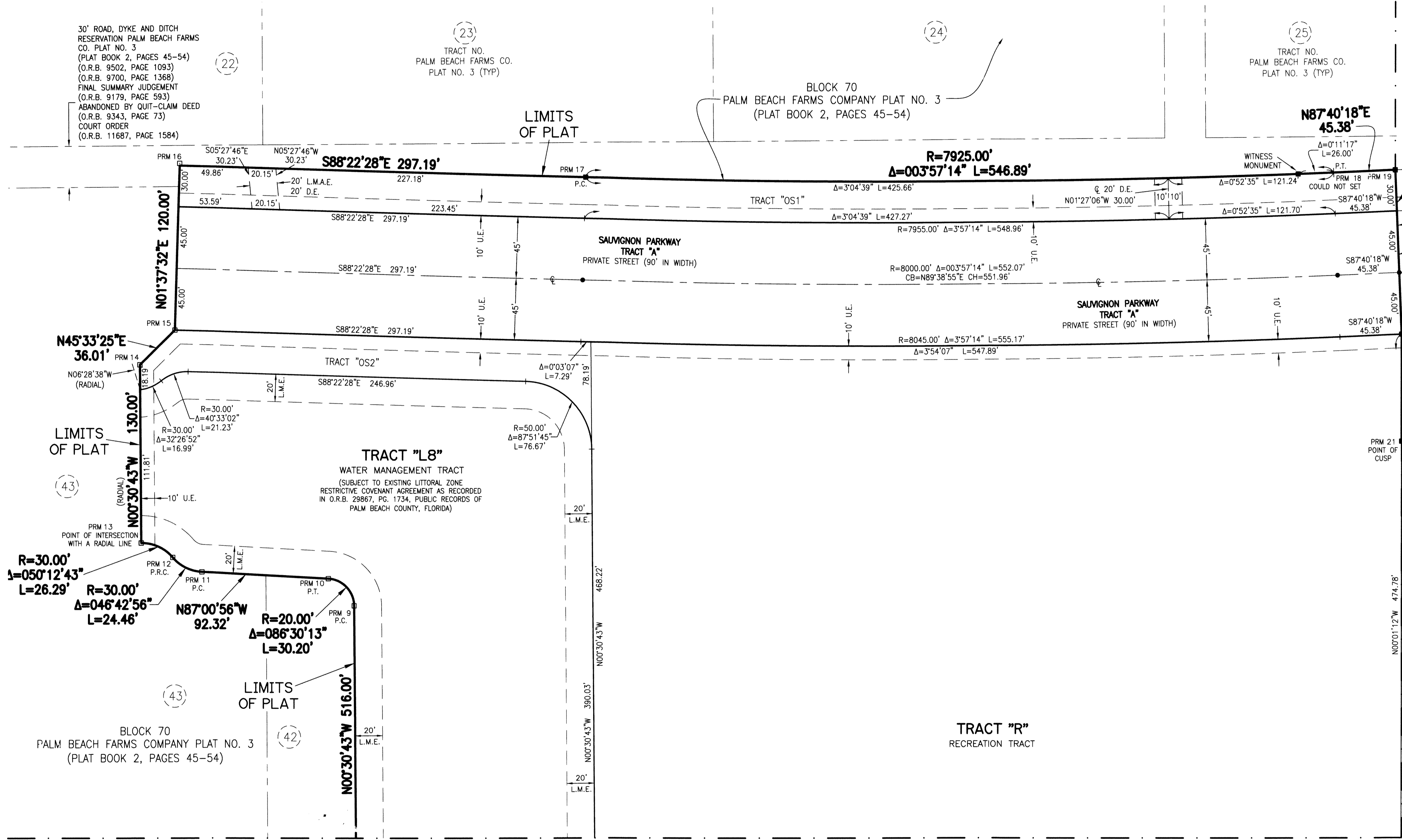
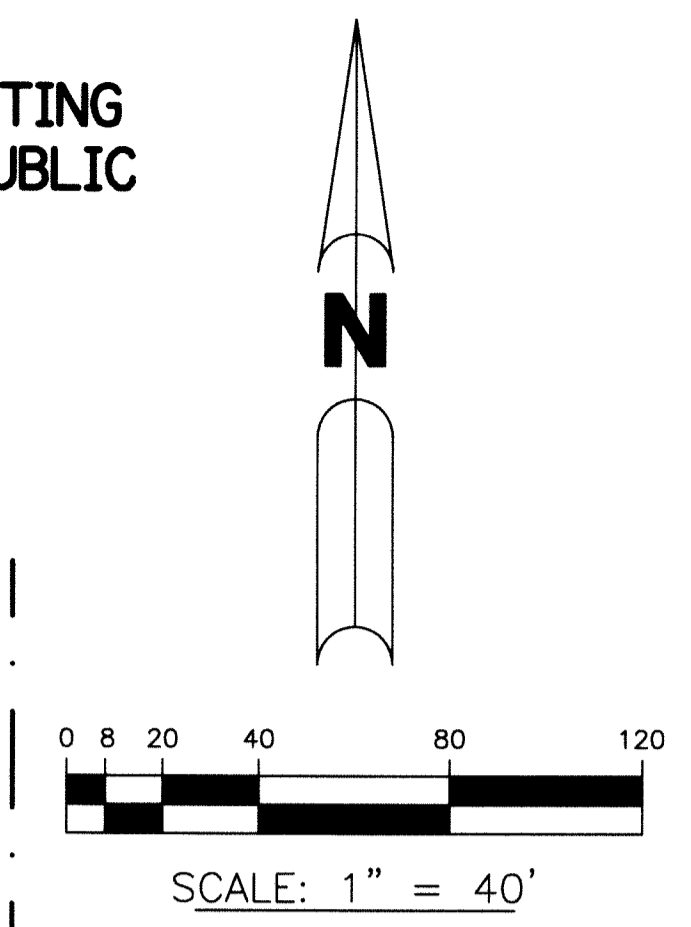


HYDER AGR-PUD SOUTH PLAT THREE

BEING A REPLAT OF ALL OF TRACTS 57 THROUGH 59, INCLUSIVE, A PORTION OF TRACTS 37 THROUGH 43, INCLUSIVE, TRACTS 55, 56, 60 AND A PORTION OF THE ABUTTING ROAD, DYKE AND DITCH RESERVATIONS, 30.00 FEET IN WIDTH, BLOCK 70, PALM BEACH FARMS CO. PLAT NO. 3, AS RECORDED IN PLAT BOOK 2, PAGES 45 THROUGH 54, PUBLIC RECORDS, PALM BEACH COUNTY, FLORIDA, LYING IN SECTION 31, TOWNSHIP 46 SOUTH, RANGE 42 EAST.

SHEET 2 OF 8

98



- LEGEND:**
- - FOUND PERMANENT REFERENCE MONUMENT
 - - SET PERMANENT REFERENCE MONUMENT
 - - SET PERMANENT CONTROL POINT
 - - FOUND PERMANENT REFERENCE MONUMENT
 - - FOUND PERMANENT CONTROL POINT
 - - FOUND PERMANENT CONTROL POINT
 - - FOUND PERMANENT CONTROL POINT
 - AGR - AGRICULTURAL
 - B.E. - BUFFER EASEMENT
 - BLK - BLOCK
 - CB - CHORD BEARING
 - CH - CHORD DISTANCE
 - C - CENTERLINE
 - D.B. - DEED BOOK
 - D.E. - PRIVATE DRAINAGE EASEMENT
 - F.P.L. - FLORIDA POWER & LIGHT
 - L - ARC LENGTH
 - L.A.E. - LIMITED ACCESS EASEMENT
 - L.M.A.E. - LAKE MAINTENANCE ACCESS EASEMENT
 - L.M.E. - LAKE MAINTENANCE EASEMENT
 - L.W.D.D. - LAKE WORTH DRAINAGE DISTRICT
 - N.R. - NOT RADIAL
 - N.T.S. - NOT TO SCALE
 - O.R.B. - OFFICIAL RECORD BOOK
 - O.E. - MAINTENANCE & ROOF OVERHANG EASEMENT
 - P.B.C.U.E. - PALM BEACH COUNTY UTILITY EASEMENT
 - P.B. - PLAT BOOK
 - P.C. - POINT OF CURVATURE
 - P.C.C. - POINT OF COMPOUND CURVATURE
 - P.C.P. - PERMANENT CONTROL POINT
 - P.D.E. - PUBLIC DRAINAGE EASEMENT
 - PG. - PAGE
 - P.O.S. - PAGES
 - P.O.B. - POINT OF BEGINNING
 - P.O.C. - POINT OF COMMENCEMENT
 - P.O.I. - POINT OF INTERSECTION
 - P.R.C. - POINT OF REVERSE CURVATURE
 - PRM - PERMANENT REFERENCE MONUMENT
 - P.S.M. - PROFESSIONAL SURVEYOR AND MAPPER
 - P.T. - POINT OF TANGENCY
 - PUD - PLANNED UNIT DEVELOPMENT
 - R - RADIUS
 - RAD. - RADIAL
 - R/W - RIGHT-OF-WAY
 - R.D&D - ROAD, DYKE AND DITCH RESERVATION
 - S.T. - SURVEY TIE
 - U.E. - UTILITY EASEMENT
- SECTION 31-46-42 - SECTION 31, TOWNSHIP 46 SOUTH, RANGE 42 EAST
TYP - TYPICAL

NOTE:
 COORDINATES SHOWN ARE GRID COORDINATES DATUM = NAD 83 (1990 ADJUSTMENT)
 ZONE = FLORIDA EAST ZONE
 LINEAR UNIT = U.S. SURVEY FEET
 COORDINATE SYSTEM = 1983 STATE PLANE TRANSVERSE MERCATOR PROJECTION
 ALL DISTANCES ARE GROUND
 SCALE FACTOR = 1.00002237
 PLAT BEARING = GRID BEARING
 GROUND DISTANCE X SCALE FACTOR = GRID DISTANCE

THIS INSTRUMENT WAS PREPARED BY
 PERRY C. WHITE, P.S.M. 4213, STATE OF FLORIDA
 SAND & HILLS SURVEYING, INC.
 8461 LAKE WORTH ROAD, SUITE 410
 LAKE WORTH, FLORIDA 33467
 LB-7741

PRM	NORTHING	EASTING
PRM9	758865.1095	919071.0039
PRM10	758884.9041	919052.0455
PRM11	758889.7106	918959.8526
PRM12	758900.2664	918938.5340
PRM13	758910.8618	918915.3854
PRM14	759040.8595	918914.2239
PRM15	759066.0733	918939.9328
PRM16	759186.0277	918943.3371
PRM17	759177.5965	919240.4152
PRM18	759180.9492	919787.2021
PRM19	759182.7928	919832.5438
PRM20	759062.8891	919837.4189
PRM21	758984.8378	919837.4462

