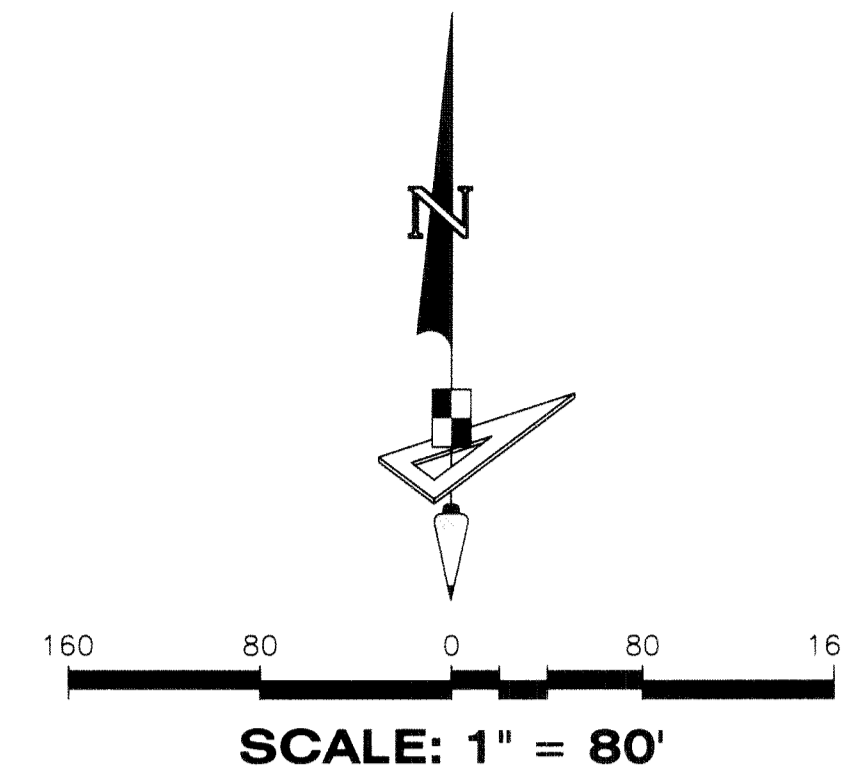
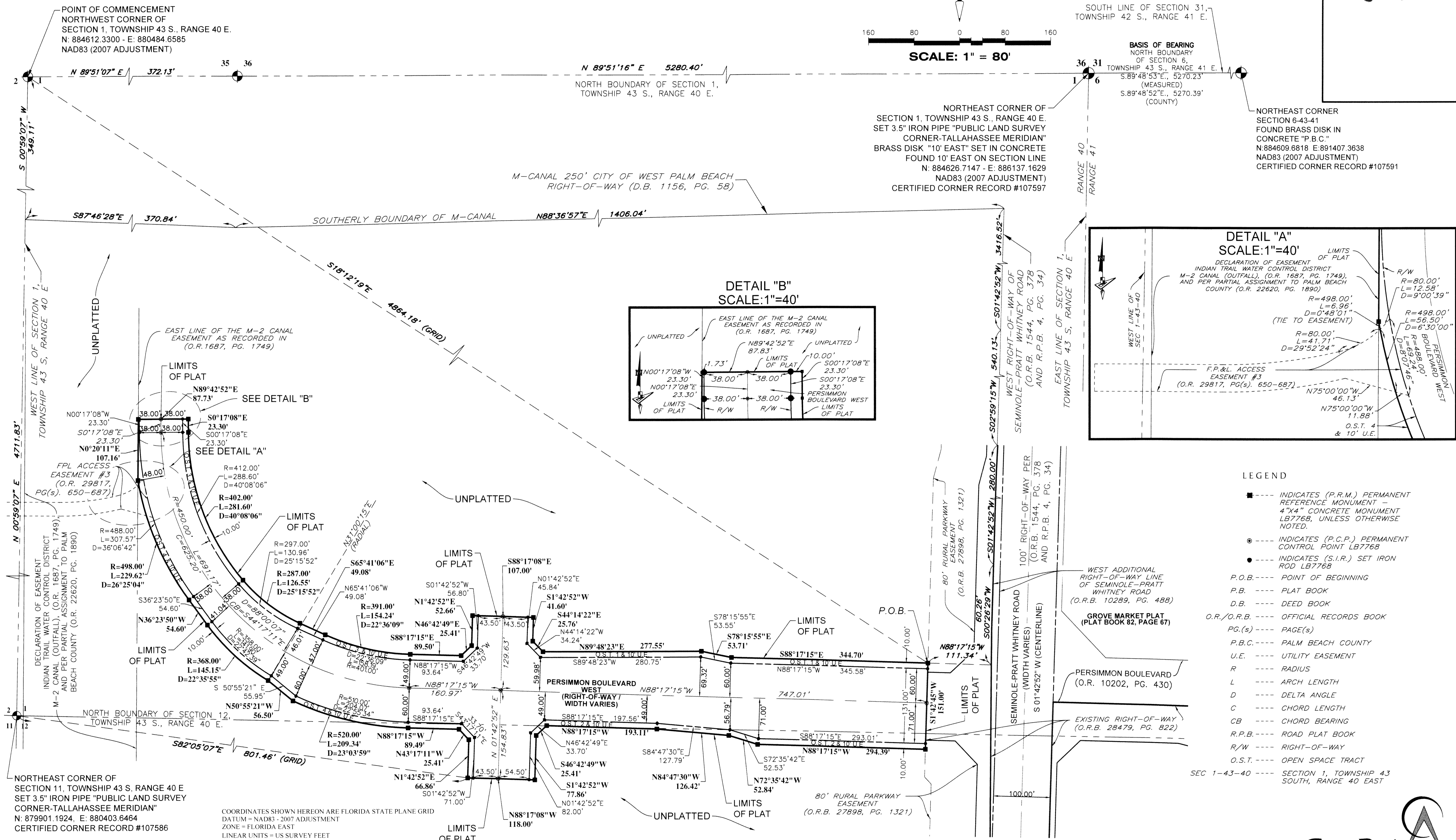


# PERSIMMON BOULEVARD WEST - PLAT 1

BEING A PORTION OF SECTIONS 1 AND 12, TOWNSHIP 43 SOUTH, RANGE 40 EAST,  
CITY OF WESTLAKE, PALM BEACH COUNTY, FLORIDA



11



POINT OF COMMENCEMENT  
NORTHWEST CORNER OF  
SECTION 1, TOWNSHIP 43 S., RANGE 40 E.  
N: 884612.3300 - E: 880484.6585  
NAD83 (2007 ADJUSTMENT)

SOUTH LINE OF SECTION 31,  
TOWNSHIP 42 S., RANGE 41 E.

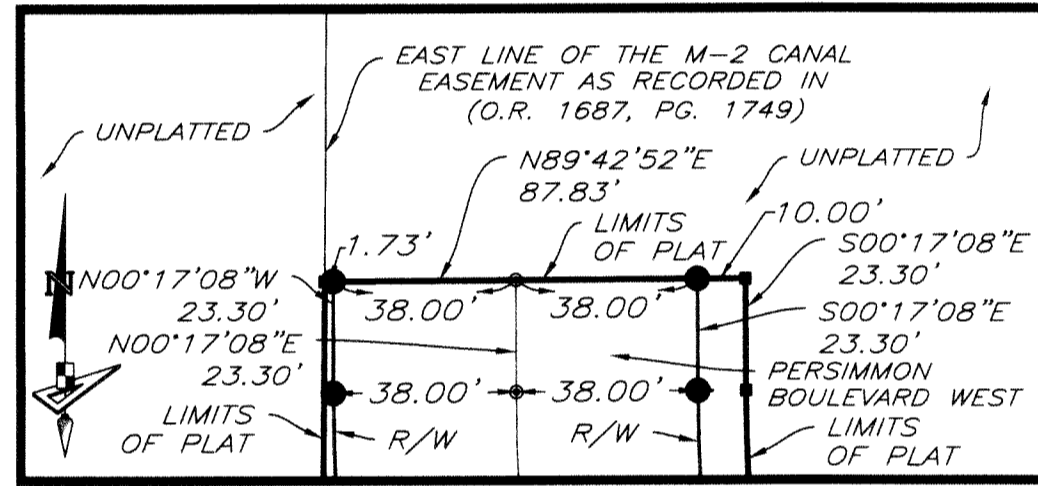
BASIS OF BEARING  
NORTH BOUNDARY  
OF SECTION 6,  
TOWNSHIP 43 S., RANGE 41 E.  
S.89°48'53"E., 5270.23'  
(MEASURED)  
S.89°48'52"E., 5270.39'  
(COUNTY)

NORTHEAST CORNER OF  
SECTION 1, TOWNSHIP 43 S., RANGE 40 E.  
SET 3.5" IRON PIPE "PUBLIC LAND SURVEY  
CORNER-TALLAHASSEE MERIDIAN"  
BRASS DISK "10' EAST" SET IN CONCRETE  
FOUND 10' EAST ON SECTION LINE  
N: 884626.7147 - E: 886137.1629  
NAD83 (2007 ADJUSTMENT)  
CERTIFIED CORNER RECORD #107597

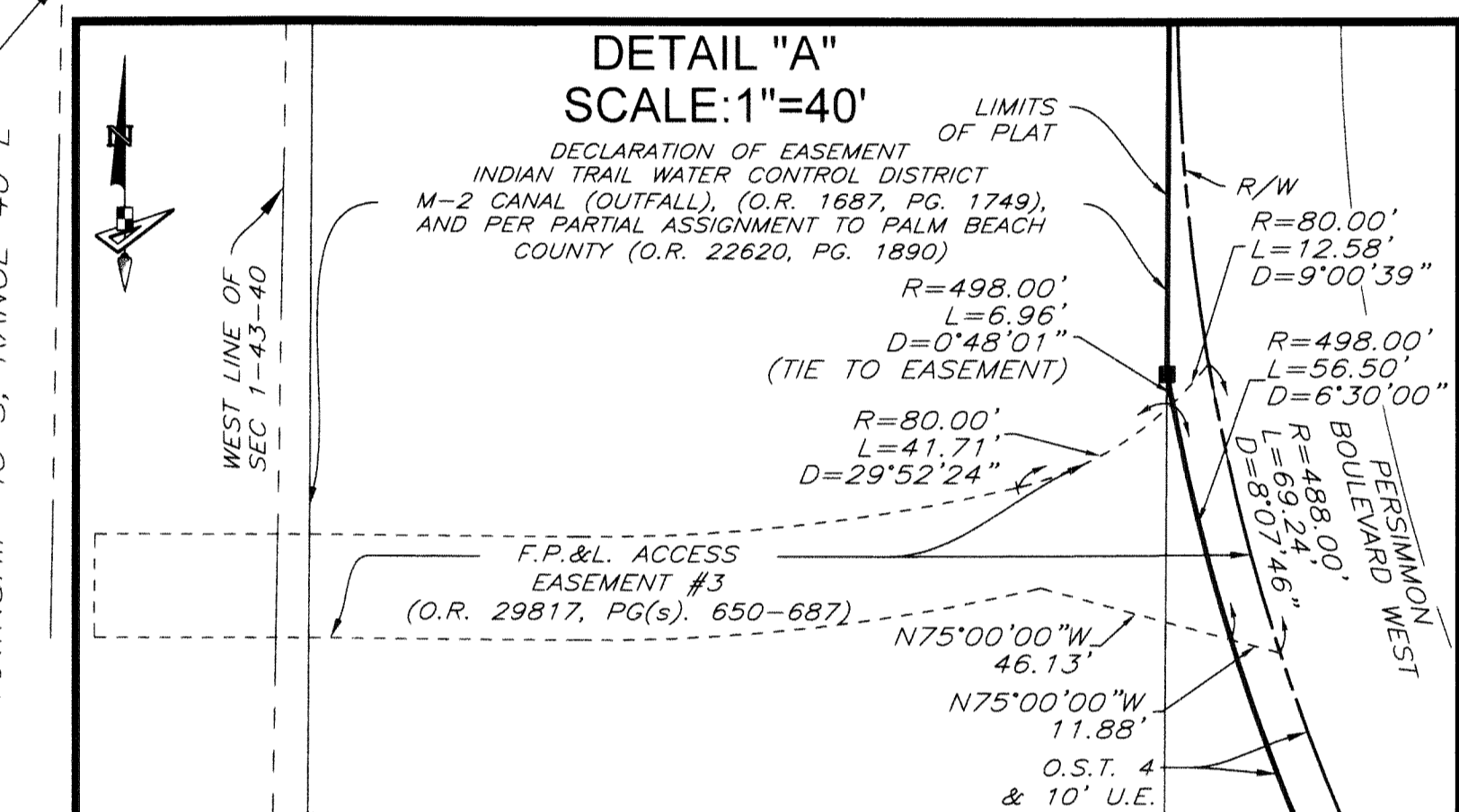
NORTHEAST CORNER  
SECTION 6-43-41  
FOUND BRASS DISK IN  
CONCRETE "P.B.C."  
N:884609.6818 E:891407.3638  
NAD83 (2007 ADJUSTMENT)  
CERTIFIED CORNER RECORD #107591

M-CANAL 250' CITY OF WEST PALM BEACH  
RIGHT-OF-WAY (D.B. 1156, PG. 58)

DETAIL "B"  
SCALE: 1"=40'



DETAIL "A"  
SCALE: 1"=40'



- LEGEND**
- --- INDICATES (P.R.M.) PERMANENT REFERENCE MONUMENT 4"x4" CONCRETE MONUMENT LB7768, UNLESS OTHERWISE NOTED.
  - --- INDICATES (P.C.P.) PERMANENT CONTROL POINT LB7768
  - --- INDICATES (S.I.R.) SET IRON ROD LB7768
  - P.O.B. --- POINT OF BEGINNING
  - P.B. --- PLAT BOOK
  - D.B. --- DEED BOOK
  - O.R./O.R.B. --- OFFICIAL RECORDS BOOK
  - PG.(s) --- PAGE(S)
  - P.B.C. --- PALM BEACH COUNTY
  - U.E. --- UTILITY EASEMENT
  - R --- RADIUS
  - L --- ARCH LENGTH
  - D --- DELTA ANGLE
  - C --- CHORD LENGTH
  - CB --- CHORD BEARING
  - R.P.B. --- ROAD PLAT BOOK
  - R/W --- RIGHT-OF-WAY
  - O.S.T. --- OPEN SPACE TRACT
  - SEC 1-43-40 --- SECTION 1, TOWNSHIP 43 SOUTH, RANGE 40 EAST

NORTHEAST CORNER OF  
SECTION 11, TOWNSHIP 43 S., RANGE 40 E  
SET 3.5" IRON PIPE "PUBLIC LAND SURVEY  
CORNER-TALLAHASSEE MERIDIAN"  
N: 879901.1924, E: 880403.6464  
CERTIFIED CORNER RECORD #107586

COORDINATES SHOWN HEREON ARE FLORIDA STATE PLANE GRID  
DATUM = NAD83 - 2007 ADJUSTMENT  
ZONE = FLORIDA EAST  
LINEAR UNITS = US SURVEY FEET  
COORDINATE SYSTEM = 1983 STATE PLANE  
PROJECTION = TRANSVERSE MERCATOR  
ALL DISTANCES ARE GROUND  
SCALE FACTOR: 1.0000  
GROUND DISTANCE X SCALE FACTOR = GRID DISTANCE  
NO ROTATION  
ALL TIES TO SECTION CORNERS AND QUARTER CORNERS ARE  
GENERATED FROM MEASURED VALUES

NOTICE: THIS PLAT, AS RECORDED IN ITS GRAPHIC FORM, IS THE  
OFFICIAL DEPICTION OF THE SUBDIVIDED LANDS DESCRIBED  
HEREIN AND WILL IN NO CIRCUMSTANCES BE SUPPLANTED  
IN AUTHORITY BY ANY OTHER GRAPHIC OR DIGITAL FORM  
OF THE PLAT. THERE MAY BE ADDITIONAL RESTRICTIONS THAT  
ARE NOT RECORDED ON THIS PLAT THAT MAY BE FOUND IN  
THE PUBLIC RECORDS OF THIS COUNTY.