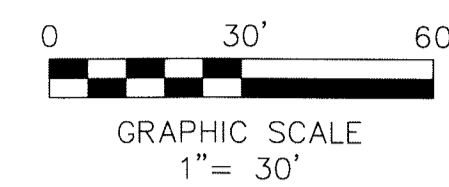
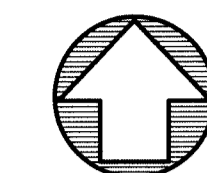


PERIMETER
SURVEYING & MAPPING
 Certificate of Authorization No. LB7264
 Prepared by: Jeff S. Hodapp, P.S.M.
 947 Clint Moore Road
 Boca Raton, Florida 33487
 Tel: (561) 241-9988
 Fax: (561) 241-5182

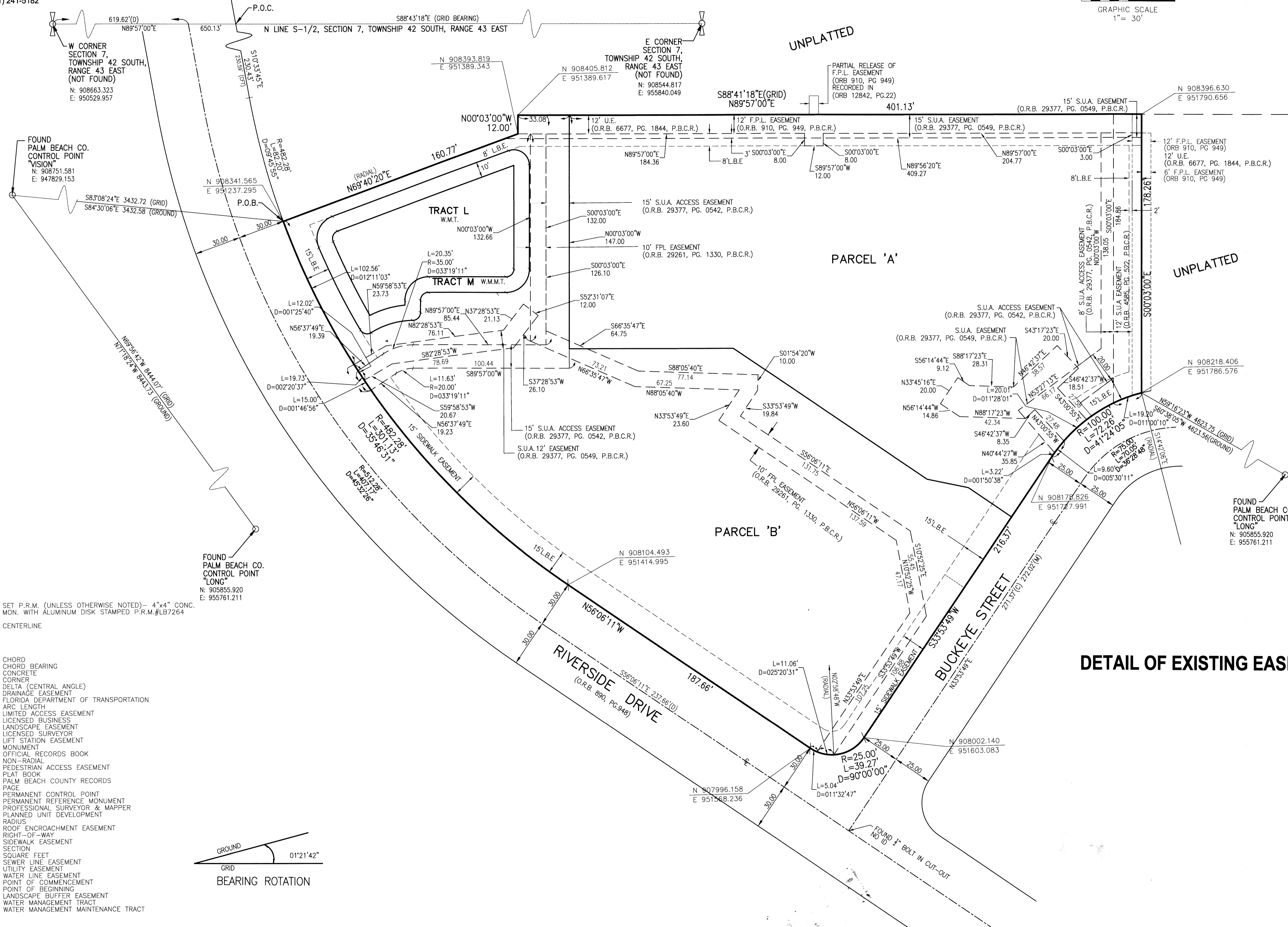
NUVO BUSINESS CENTER AT THE GARDENS

A PARCEL OF LAND LYING IN SECTION 7, TOWNSHIP 42 SOUTH, RANGE 43 EAST,
 CITY OF PALM BEACH GARDENS, PALM BEACH COUNTY, FLORIDA.
 OCTOBER, 2017



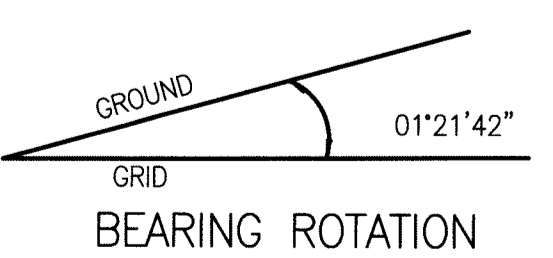
5

SHEET 3 OF 3



- LEGEND:**
- = SET P.R.M. (UNLESS OTHERWISE NOTED) - 4"x4" CONC. MON. WITH ALUMINUM DISK STAMPED P.R.M.#LB7264
 - ⊕ = CENTERLINE

- ABBREVIATIONS:**
- CH = CHORD BEARING
 - CONC. = CONCRETE
 - COR. = CORNER
 - D = DELTA (CENTRAL ANGLE)
 - D.E. = DRAINAGE EASEMENT
 - F.D.O.T. = FLORIDA DEPARTMENT OF TRANSPORTATION
 - L = ARC LENGTH
 - L.A.E. = LIMITED ACCESS EASEMENT
 - L.B. = LICENSED BUSINESS
 - L.E. = LANDSCAPE EASEMENT
 - L.S. = LICENSED SURVEYOR
 - L.S.E. = LIFT STATION EASEMENT
 - MON. = MONUMENT
 - O.R.B. = OFFICIAL RECORDS BOOK
 - N.R. = NON-RADIAL
 - P.A.E. = PEDESTRIAN ACCESS EASEMENT
 - P.B. = PLAT BOOK
 - P.B.C.R. = PALM BEACH COUNTY RECORDS
 - PG. = PAGE
 - P.C.P. = PERMANENT CONTROL POINT
 - P.R.M. = PERMANENT REFERENCE MONUMENT
 - P.S.M. = PROFESSIONAL SURVEYOR & MAPPER
 - P.U.D. = PLANNED UNIT DEVELOPMENT
 - R = RADIUS
 - R.E.E. = RIGHT ENCROACHMENT EASEMENT
 - R/W = RIGHT-OF-WAY
 - S.E. = SIDEWALK EASEMENT
 - SEC. = SECTION
 - S.F. = SQUARE FEET
 - SLE = SEWER LINE EASEMENT
 - U.E. = UTILITY EASEMENT
 - W.L.E. = WATER LINE EASEMENT
 - P.O.C. = POINT OF COMMENCEMENT
 - P.O.B. = POINT OF BEGINNING
 - L.B.E. = LANDSCAPE BUFFER EASEMENT
 - W.M.T. = WATER MANAGEMENT TRACT
 - W.M.M.T. = WATER MANAGEMENT MAINTENANCE TRACT



DETAIL OF EXISTING EASEMENTS