

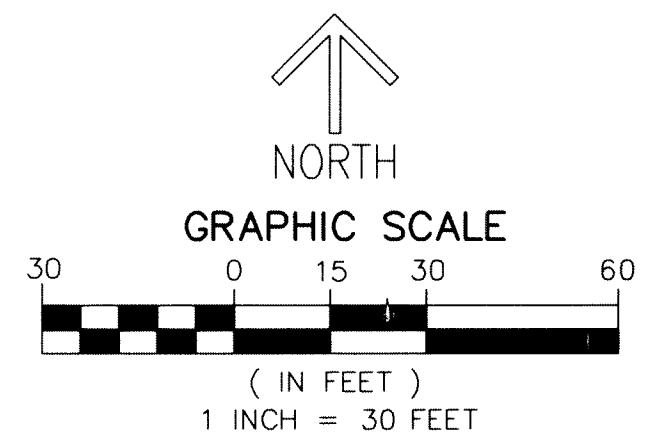
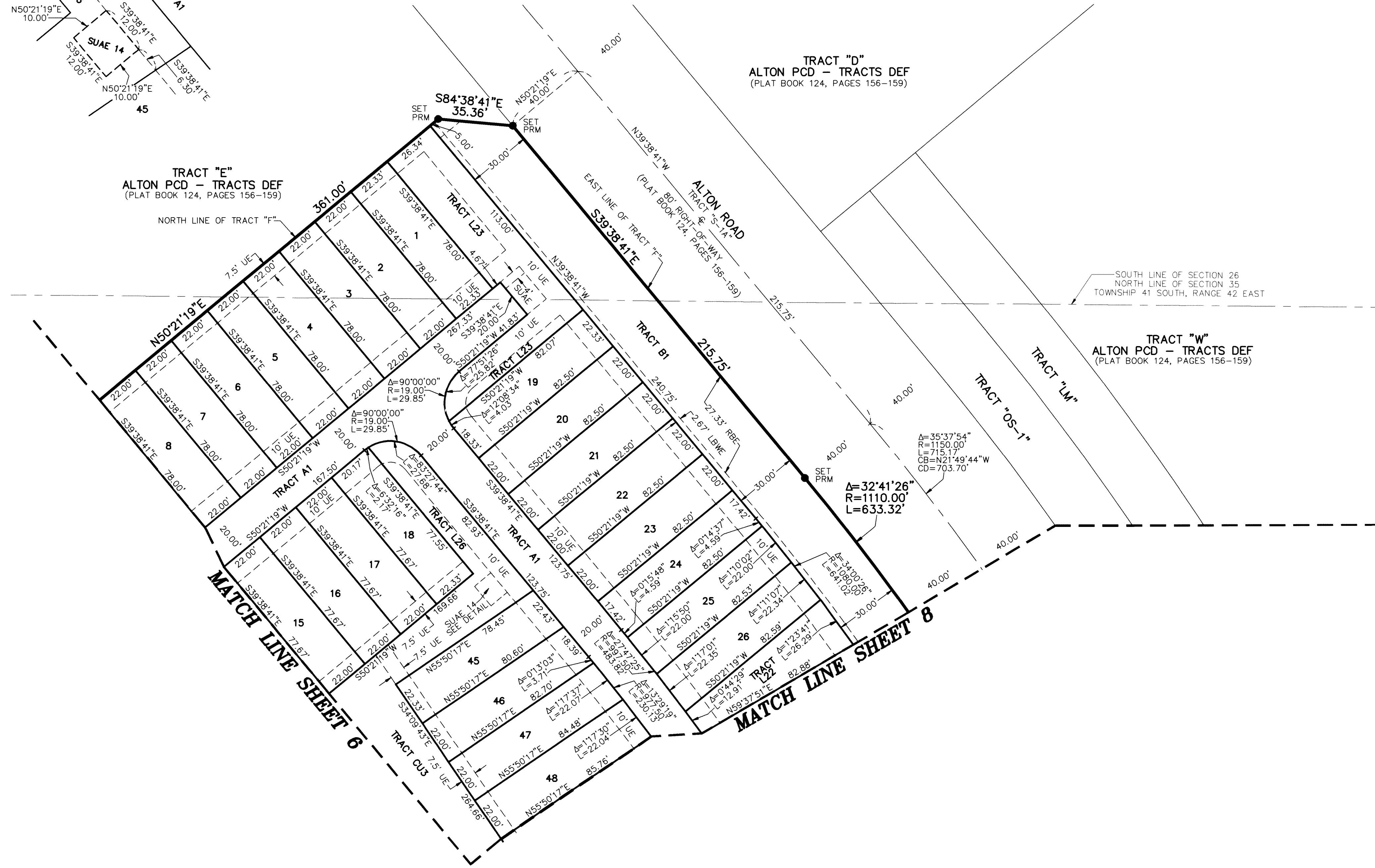
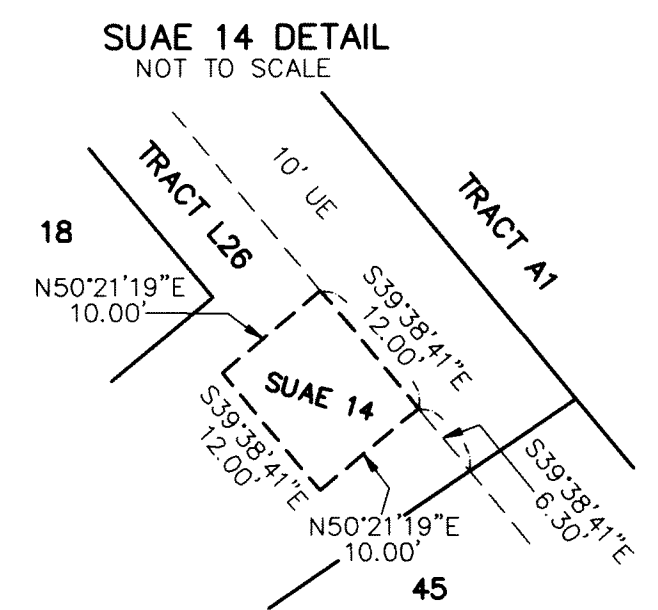
193

SHEET 7 OF 8

THIS INSTRUMENT PREPARED BY  
DAVID P. LINDLEY  
OF  
**CAULFIELD and WHEELER, INC.**  
SURVEYORS - ENGINEERS - PLANNERS  
7900 GLADES ROAD, SUITE 100  
BOCA RATON, FLORIDA 33434 - (561)392-1991  
CERTIFICATE OF AUTHORIZATION NO. LB3591  
DECEMBER - 2017

# ALTON NEIGHBORHOOD 4

BEING A REPLAT OF A PORTION OF TRACT "F", ALTON PCD-TRACTS DEF, AS RECORDED IN PLAT BOOK 124, PAGES 156 THROUGH 159  
OF PUBLIC RECORDS OF PALM BEACH COUNTY, FLORIDA, LYING IN SECTIONS 26 AND 35, TOWNSHIP 41 SOUTH, RANGE 42 EAST,  
CITY OF PALM BEACH GARDENS, PALM BEACH COUNTY, FLORIDA



- LEGEND/ABBREVIATIONS**
- CL - CENTERLINE
  - Δ - DELTA (CENTRAL ANGLE)
  - CB - CHORD BEARING
  - CD - CHORD DISTANCE
  - L - ARC LENGTH
  - LB - LICENSED BUSINESS
  - LBWE - LANDSCAPE BUFFER WALL EASEMENT
  - O.R.B. - OFFICIAL RECORD BOOK
  - R - RADIUS
  - RBE - ROADWAY BUFFER EASEMENT
  - (R) - INDICATES RADIAL LINE
  - SUAE - SEACOAST UTILITY AUTHORITY EASEMENT
  - UE - UTILITY EASEMENT
  - WME - WATER MANAGEMENT EASEMENT
  - - DENOTES PERMANENT CONTROL POINT
  - PRM - DENOTES PERMANENT REFERENCE MONUMENT FOUND 4"x4" CONCRETE MONUMENT WITH DISK
  - FND PRM - DENOTES PERMANENT REFERENCE MONUMENT FOUND 1/2" IRON ROD WITH ALUMINUM DISK STAMPED "SCHORAH AND ASSOCIATES PRM LB#2438"
  - SET PRM - DENOTES PERMANENT REFERENCE MONUMENT SET 5/8" IRON ROD WITH PLASTIC CAP STAMPED "C&W PRM LB#3591"

