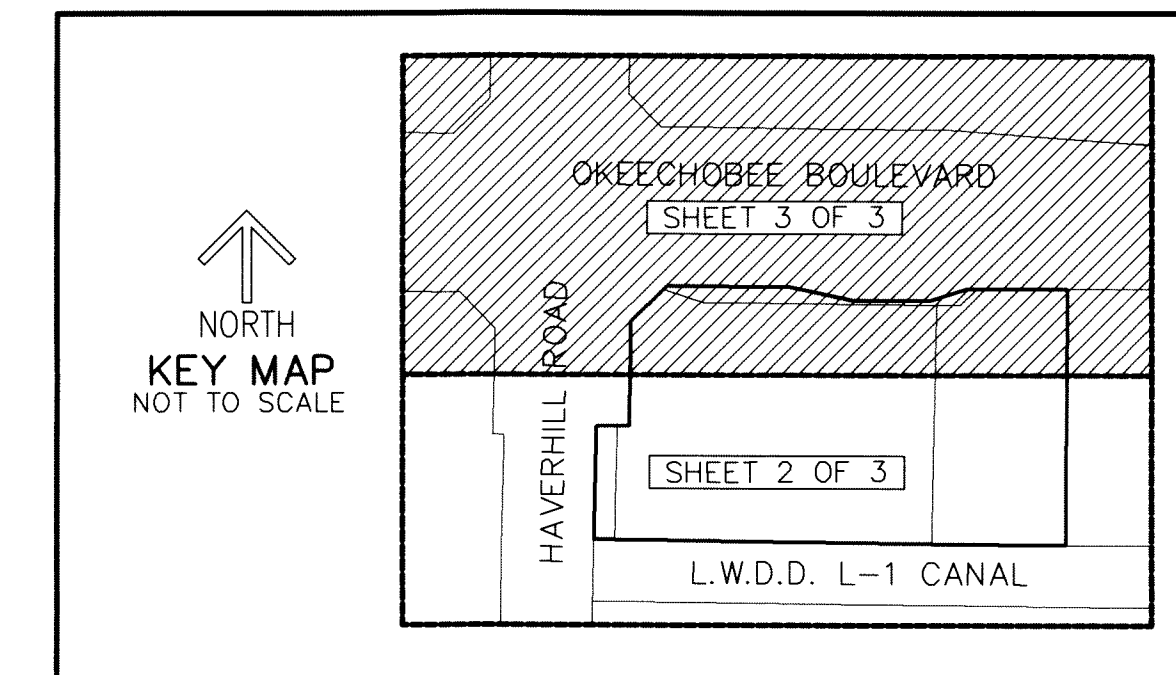


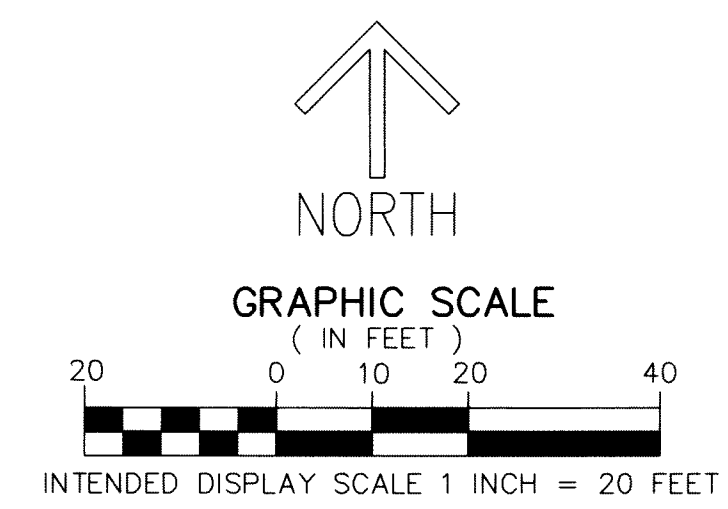
THIS INSTRUMENT PREPARED BY  
DAVID P. LINDLEY  
OF  
**CAULFIELD and WHEELER, INC.**  
SURVEYORS - ENGINEERS - PLANNERS  
7900 GLADES ROAD, SUITE 100  
BOCA RATON, FLORIDA 33434 - (561)392-1991  
CERTIFICATE OF AUTHORIZATION NO. LB3591

# WAWA HO 1193

A PORTION OF THE NORTHWEST ONE-QUARTER OF SECTION 25  
TOWNSHIP 43 NORTH, RANGE 42 EAST  
PALM BEACH COUNTY, FLORIDA



168

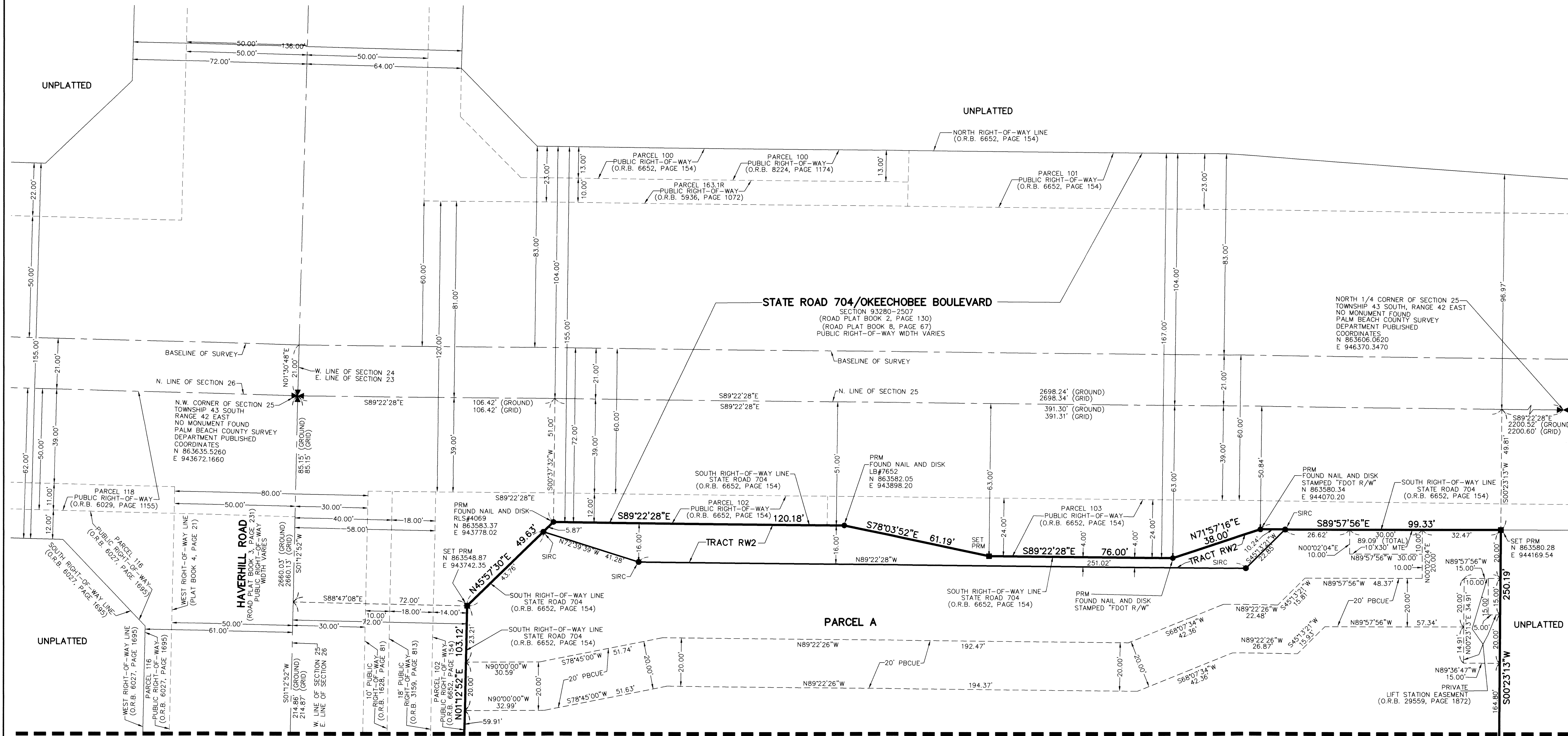


- LEGEND/ABBREVIATIONS**
- CL - CENTERLINE
  - Δ - DELTA (CENTRAL ANGLE)
  - E - EASTING WHEN USED WITH COORDINATES
  - FPL - FLORIDA POWER AND LIGHT COMPANY
  - LB - LICENSED BUSINESS
  - L.W.D.D. - LAKE WORTH DRAINAGE DISTRICT
  - MTE - MASS TRANSIT EASEMENT
  - N - NORTHING WHEN USED WITH COORDINATES
  - O.R.B. - OFFICIAL RECORD BOOK
  - PBCUE - PALM BEACH COUNTY UTILITY EASEMENT
  - UE - UTILITY EASEMENT
  - PRM - DENOTES PERMANENT REFERENCE MONUMENT 4" x 4" x 24" CONCRETE MONUMENT WITH ALUMINUM DISK STAMPED "C&W PRM LB3591"
  - PRM - DENOTES PERMANENT REFERENCE MONUMENT NAIL AND DISK
  - ▲ - PALM BEACH COUNTY CONTROL POINT
  - SIRC - DENOTES SET 5/8" IRON ROD WITH CAP STAMPED "C&W LB3591"

**NOTES**  
**COORDINATES, BEARINGS AND DISTANCES**

COORDINATES SHOWN ARE GRID  
DATUM = NAD 83 1990 ADJUSTMENT  
ZONE = FLORIDA EAST  
LINEAR UNIT = US SURVEY FEET  
COORDINATE SYSTEM 1983 STATE PLANE  
TRANSVERSE MERCATOR PROJECTION  
ALL DISTANCES ARE GROUND UNLESS OTHERWISE NOTED  
SCALE FACTOR = 1.0000360  
GROUND DISTANCE X SCALE FACTOR = GRID DISTANCE  
BEARINGS AS SHOWN HEREON ARE GRID DATUM,  
NAD 83 1990 ADJUSTMENT, FLORIDA EAST ZONE.

SHEET 3 OF 3



MATCH LINE SHEET 2 OF 3