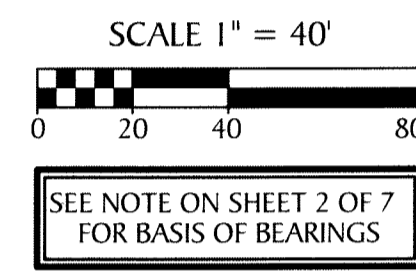
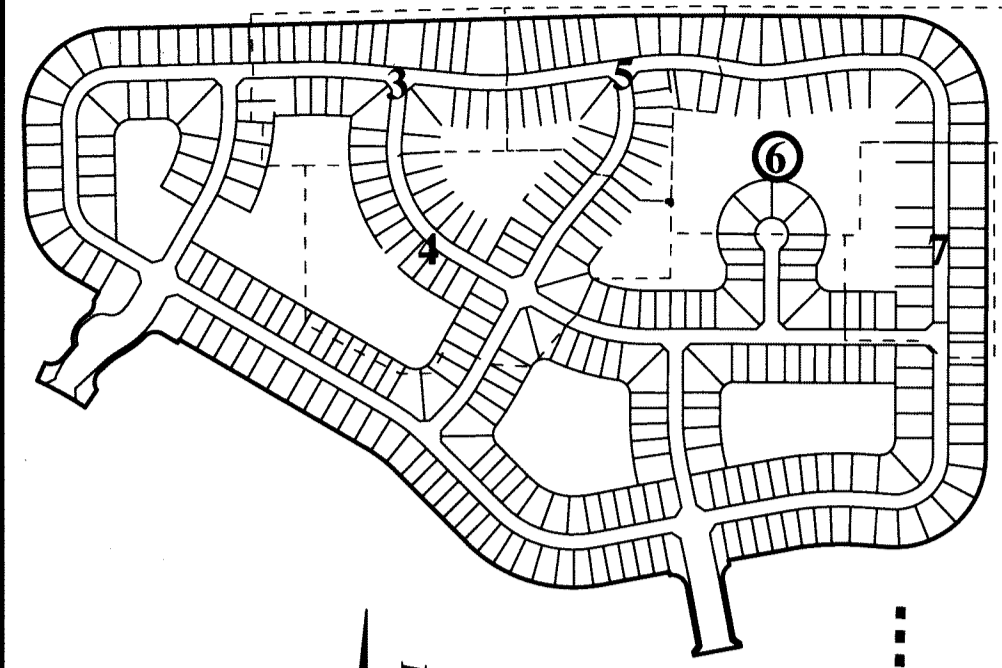


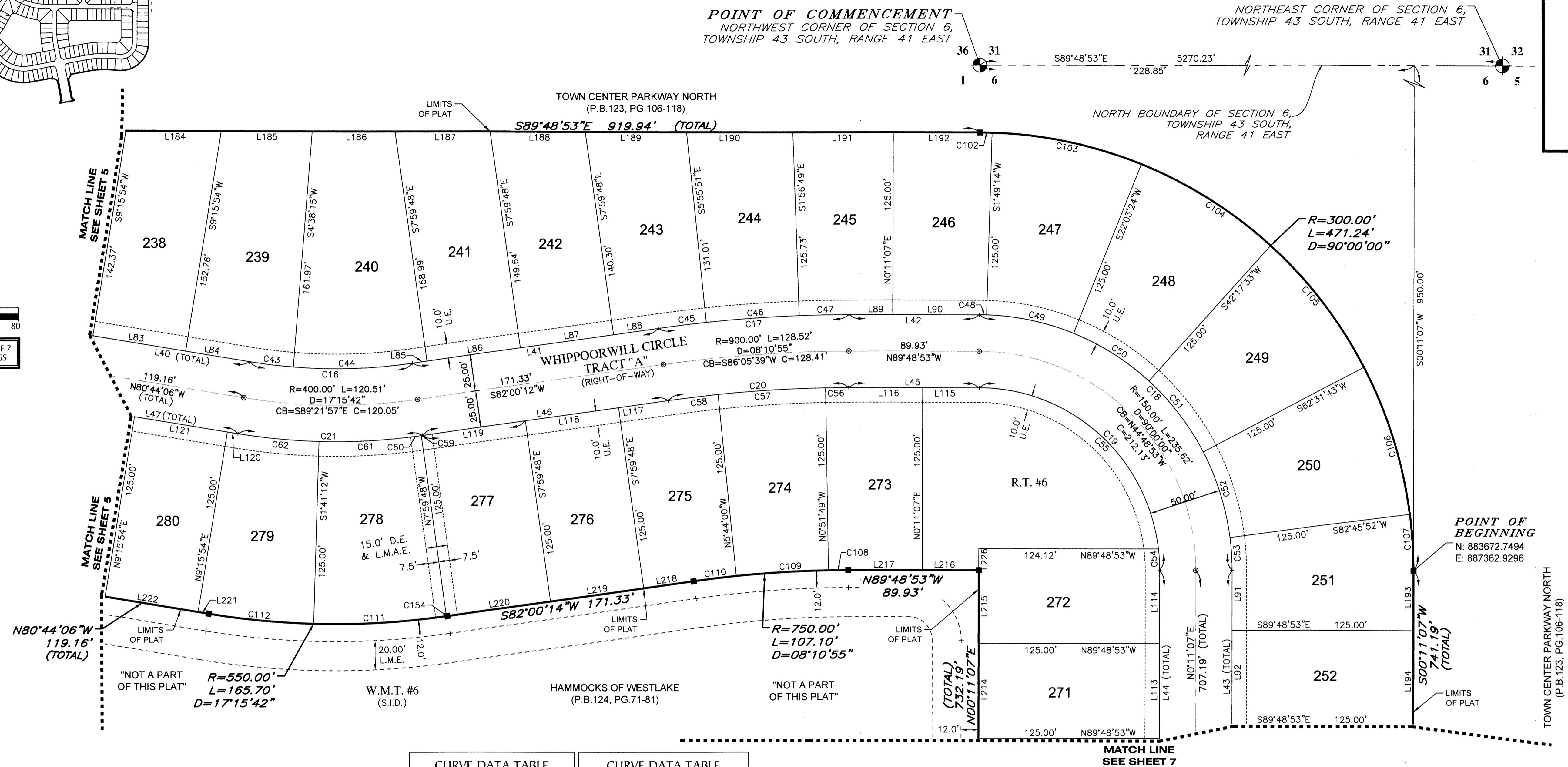
SHEET MAP
(NOT TO SCALE)



HAMMOCKS OF WESTLAKE - PHASE II

BEING A REPLAT OF TRACTS "Q-2", O.S.T. #8 AND O.S.T. #9 OF HAMMOCKS OF WESTLAKE PER PLAT BOOK 124, PAGES 71-81, BEING A PORTION OF SECTION 6, TOWNSHIP 43 SOUTH, RANGE 41 EAST, AND A PORTION OF SECTION 1, TOWNSHIP 43 SOUTH, RANGE 40 EAST, CITY OF WESTLAKE, PALM BEACH COUNTY, FLORIDA

158



LINE DATA TABLE		
NO.	BEARING	LENGTH
L40	N 80°44'06" W	119.16'
L41	S 82°00'12" W	171.33'
L42	N 89°48'53" W	89.93'
L43	N 00°11'07" E	707.19'
L44	N 00°11'07" E	707.19'
L45	N 89°48'53" W	89.93'
L46	N 82°00'12" E	171.33'
L47	S 80°44'06" E	119.16'
L83	N 80°44'06" W	65.00'
L84	N 80°44'06" W	44.83'
L85	S 82°00'12" W	10.04'
L86	S 82°00'12" W	65.00'
L87	S 82°00'12" W	65.00'
L88	S 82°00'12" W	31.29'
L89	N 89°48'53" W	30.21'
L90	N 89°48'53" W	59.72'

LINE DATA TABLE		
NO.	BEARING	LENGTH
L91	N 00°11'07" E	41.09'
L92	N 00°11'07" E	65.00'
L113	N 00°11'07" E	65.00'
L114	N 00°11'07" E	50.19'
L115	N 89°48'53" W	38.93'
L116	N 89°48'53" W	51.00'
L117	N 82°00'12" E	34.79'
L118	N 82°00'12" E	65.00'
L119	N 82°00'12" E	71.54'
L120	S 80°44'06" E	7.52'
L121	S 80°44'06" E	65.00'
L184	S 89°48'53" E	65.82'
L185	S 89°48'53" E	62.80'
L186	S 89°48'53" E	57.21'
L187	S 89°48'53" E	65.67'
L188	S 89°48'53" E	65.67'

LINE DATA TABLE		
NO.	BEARING	LENGTH
L189	S 89°48'53" E	70.07'
L190	S 89°48'53" E	73.42'
L191	S 89°48'53" E	69.30'
L192	S 89°48'53" E	59.72'
L193	S 00°11'07" W	41.09'
L194	S 00°11'07" W	65.00'
L214	N 00°11'07" E	65.00'
L215	N 00°11'07" E	50.19'
L216	N 89°48'53" W	38.93'
L217	N 89°48'53" W	51.00'
L218	S 82°00'14" W	34.79'
L219	S 82°00'14" W	65.00'
L220	S 82°00'14" W	71.54'
L221	N 80°44'06" W	7.52'
L222	N 80°44'06" W	65.00'
L226	N 00°11'07" E	14.81'

CURVE DATA TABLE			
NO.	RADIUS	DELTA	ARC
C16	375.00'	17°15'42"	112.98'
C17	925.00'	8°10'55"	132.09'
C18	175.00'	90°00'00"	274.89'
C19	125.00'	90°00'00"	196.35'
C20	875.00'	8°10'55"	124.95'
C21	425.00'	17°15'42"	128.04'
C43	375.00'	4°37'39"	30.29'
C44	375.00'	12°38'03"	82.69'
C45	925.00'	2°03'57"	33.35'
C46	925.00'	3°59'02"	64.32'
C47	925.00'	2°07'56"	34.42'
C48	175.00'	1°38'08"	4.99'
C49	175.00'	20°14'09"	61.81'
C50	175.00'	20°14'09"	61.81'
C51	175.00'	20°14'09"	61.81'
C52	175.00'	20°14'09"	61.81'
C53	175.00'	7°25'16"	22.66'
C54	125.00'	6°48'08"	14.84'
C55	125.00'	8°31'52"	181.51'

CURVE DATA TABLE			
NO.	RADIUS	DELTA	ARC
C56	875.00'	1°02'56"	16.02'
C57	875.00'	4°52'11"	74.37'
C58	875.00'	2°15'48"	34.56'
C59	425.00'	0°07'44"	0.96'
C60	425.00'	1°00'40"	7.50'
C61	425.00'	8°32'36"	63.37'
C62	425.00'	7°34'42"	56.21'
C102	300.00'	1°38'08"	8.55'
C103	300.00'	20°14'09"	105.96'
C104	300.00'	20°14'09"	105.96'
C105	300.00'	20°14'10"	105.96'
C106	300.00'	20°14'10"	105.96'
C107	300.00'	7°25'16"	38.85'
C108	750.00'	1°02'56"	13.73'
C109	750.00'	4°52'11"	63.74'
C110	750.00'	2°15'48"	29.63'
C111	550.00'	9°35'01"	92.00'
C112	550.00'	7°34'42"	72.74'
C154	550.00'	0°05'59"	0.96'

LEGEND:

- Indicates (P.R.M.) Permanent Reference Monument - 4"x4" Concrete Monument LB7768, unless otherwise noted.
- ⊕ --- Indicates (P.R.M.) Offset Permanent Reference Monument - 4"x4" Concrete Monument LB7768, unless otherwise noted.
- ⊙ --- Indicates (P.C.P.) Permanent Control Point LB7768
- P.B.C. --- Palm Beach County
- P.B. --- Plat Book
- FCM --- Found Concrete Monument
- O.R. --- Official Records Book
- (TYP) --- Typical
- (RB) --- Radial Bearing
- (NR) --- Non-Radial line
- (PR) --- Private Road
- (U.E.) --- Utility Easement
- (D.E.) --- Drainage Easement

- C --- Curve
- L --- Line
- B.T. --- Buffer Tract
- O.S.T. --- Open Space Tract
- W.M.T. --- Water Management Tract
- L.M.E. --- Lake Maintenance Easement
- L.M.A.E. --- Lake Maintenance Access Easement
- L.A.E. --- Limited Access Easement
- PG. --- Page
- R.T. --- Recreation Tract
- S.I.D. --- Seminole Improvement District
- NAD --- North American Datum
- LB --- Licensed Business
- P.S.M. --- Professional Surveyor and Mapper
- 1/4 --- One Quarter
- R --- Radius
- L --- Arc Length
- D --- Delta-Central Angle
- C --- Chord Length
- CB --- Chord Bearing



4152 W. Blue Heron Blvd. Phone: (561) 444-2720
Suite 105 www.geopointsurvey.com
Riviera Beach, FL 33404 Licensed Business Number LB 7768

DRAWN BY: WESTLAKE WESTLAKE; W.M.T.#6; HAMMOCKS OF WESTLAKE; PHASE II; PLAT BOOK 124, PAGES 71-81; PLOTTED BY: SERGIO MACHADO; ON: 2/28/2018 10:46 AM; LAST SAVED BY: LUIS; ON: 10/20/18 9:44 AM